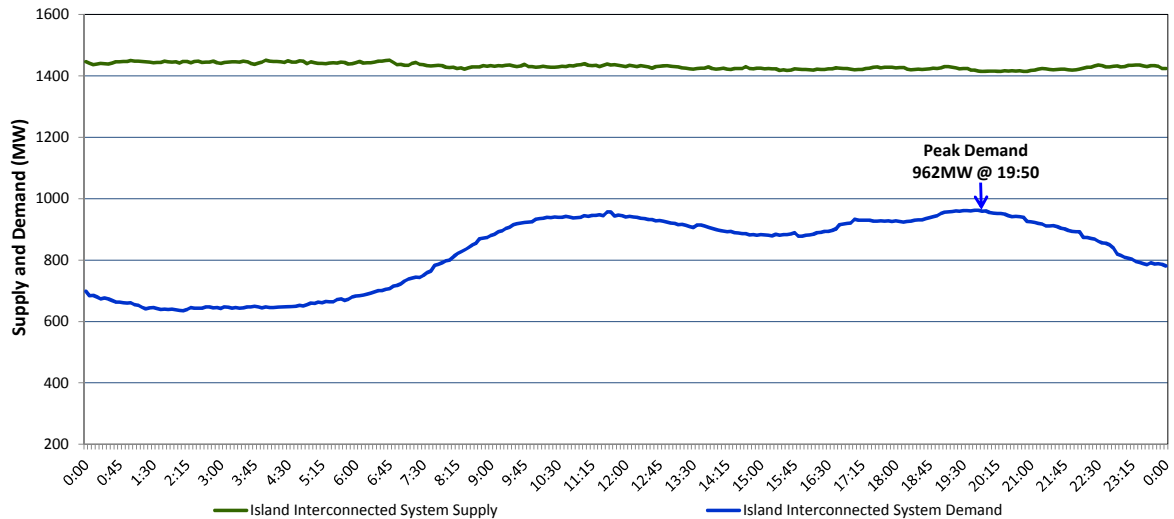


Newfoundland Labrador Hydro (NLH) Supply and Demand Status Report Filed Monday, October 05, 2015

Section 1 Island Interconnected System Supply and Demand Actual 24 Hour System Performance For Saturday, October 03, 2015



Supply Notes For October 03, 2015

- A As of 1440 hours, June 06, 2015, Holyrood Unit 2 removed from service for annual maintenance (170 MW).
- B As of 1450 hours, June 24, 2015, Hawke's Bay Unit 548 (G2) unavailable (2.5 MW).
- C As of 0949 hours, August 01, 2015, Holyrood Unit 1 removed from service for annual maintenance (170 MW).
- D As of 1330 hours, August 19, 2015, Bay d'Espoir Unit 2 unavailable (76.5 MW).
- E As of 1042 hours, August 31, 2015, Stephenville Gas Turbine unavailable. Previously derated to 30 MW (50 MW).
- F As of 0932 hours, September 27, 2015, Hardwoods Gas Turbine available. Derated to 38 MW (50 MW). End A 20 MW, End B 19 MW.
- G As of 1605 hours, September 27, 2015, Bay d'Espoir Unit 4 unavailable (76.5 MW).

Section 2 Island Interconnected Supply and Demand

Sun, Oct 04, 2015	Island System Outlook ³	Seven-Day Forecast	Temperature (°C)		Island System Daily Peak Demand (MW) Forecast
			Morning	Evening	
Available Island System Supply: ⁵	1,365 MW	Sunday, October 04, 2015	8	6	895
NLH Generation: ⁴	1,060 MW	Monday, October 05, 2015	9	11	870
NLH Power Purchases:	100 MW	Tuesday, October 06, 2015	9	10	825
Other Island Generation:	205 MW	Wednesday, October 07, 2015	9	9	840
Current St. John's Temperature:	6 °C	Thursday, October 08, 2015	10	9	870
Current St. John's Windchill:	N/A °C	Friday, October 09, 2015	7	6	895
7-Day Island Peak Demand Forecast:	895 MW	Saturday, October 10, 2015	8	13	860

Supply Notes For October 04, 2015

H At 0754 hours, October 4, 2015, Bay d'Espoir Unit 1 unavailable (76.5 MW).

- Notes:
1. Generation outages for running and corrective maintenance are included. These are not unusual for power system operations. They generally do not impact customer supply. The power system operators schedule outages to system equipment whenever possible to coincide with periods when customer demands are low and sufficient supply reserves are available. However, from time to time equipment outages are necessary and reserves may be impacted.
 2. Due to the Island Interconnected System being isolated from the larger North American grid, when there is a sudden loss of large generating units some customer's load must be interrupted for short periods to bring generation output equal to customer demand. This automatic action of power system protection, referred to as underfrequency load shedding, is necessary to ensure the integrity and reliability of system equipment. Underfrequency events typically occur 5 to 8 times per year on the Island Interconnected System and the resultant customer load interruptions are generally less than 30 minutes.
 3. As of 0800 Hours.
 4. Gross output including station service at Holyrood (24.5 MW) and improved NLH hydraulic output due to water levels (35 MW).
 5. Gross output from all Island sources (including Note 4).

Section 3 Island Peak Demand Information Previous Day Actual Peak and Current Day Forecast Peak

Sat, Oct 03, 2015	Actual Island Peak Demand ⁷	19:50	962 MW
Sun, Oct 04, 2015	Forecast Island Peak Demand		895 MW

Notes: 7. Island Demand is supplied by NLH generation and purchases, plus generation owned and operated by Newfoundland Power and Corner Brook Pulp & Paper (Deer Lake Power, DLP).