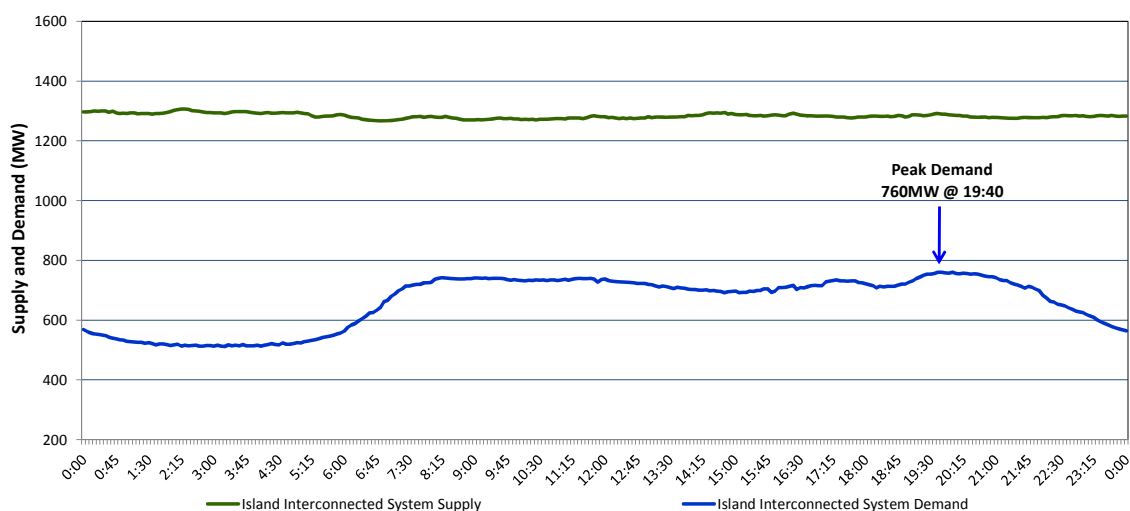


Newfoundland Labrador Hydro (NLH)

Supply and Demand Status Report Filed Wednesday, September 30, 2015

Section 1 Island Interconnected System Supply and Demand Actual 24 Hour System Performance For Tuesday, September 29, 2015



Supply Notes For September 29, 2015

- A As of 1440 hours, June 06, 2015, Holyrood Unit 2 removed from service for annual maintenance (170 MW).
- B As of 1450 hours, June 24, 2015, Hawke's Bay Unit 548 (G2) unavailable (2.5 MW).
- C As of 0949 hours, August 01, 2015, Holyrood Unit 1 removed from service for annual maintenance (170 MW).
- D As of 1330 hours, August 19, 2015, Bay d'Espoir Unit 2 unavailable (76.5 MW).
- E As of 1042 hours, August 31, 2015, Stephenville Gas Turbine unavailable. Previously derated to 30 MW (50 MW).
- F As of 0904 hours, September 12, 2015, Holyrood Unit 3 available. Derated to 70 MW (150 MW).
- G As of 0803 hours, September 20, 2015, Bay d'Espoir Unit 1 unavailable. Previously derated to 40 MW (76.5 MW).
- H As of 0932 hours, September 27, 2015, Hardwoods Gas Turbine available. Derated to 38 MW (50 MW). End A 20 MW, End B 19 MW.
- I As of 1605 hours, September 27, 2015, Bay d'Espoir Unit 4 unavailable (76.5 MW).

Section 2 Island Interconnected Supply and Demand

Wed, Sep 30, 2015			Island System Outlook ³			Seven-Day Forecast			Temperature (°C)		Island System Daily Peak Demand (MW)	
									Morning	Evening	Forecast	
Available Island System Supply: ⁵			1,290	MW		Wednesday, September 30, 2015			17	18	775	
NLH Generation: ⁴			980	MW		Thursday, October 01, 2015			17	17	775	
NLH Power Purchases:			110	MW		Friday, October 02, 2015			16	15	800	
Other Island Generation:			200	MW		Saturday, October 03, 2015			12	9	840	
Current St. John's Temperature:			15	°C		Sunday, October 04, 2015			7	8	855	
Current St. John's Windchill:			N/A	°C		Monday, October 05, 2015			9	10	845	
7-Day Island Peak Demand Forecast:			855	MW		Tuesday, October 06, 2015			10	13	845	

Supply Notes For September 30, 2015

- Notes:
1. Generation outages for running and corrective maintenance are included. These are not unusual for power system operations. They generally do not impact customer supply. The power system operators schedule outages to system equipment whenever possible to coincide with periods when customer demands are low and sufficient supply reserves are available. However, from time to time equipment outages are necessary and reserves may be impacted.
 2. Due to the Island Interconnected System being isolated from the larger North American grid, when there is a sudden loss of large generating units some customer's load must be interrupted for short periods to bring generation output equal to customer demand. This automatic action of power system protection, referred to as underfrequency load shedding, is necessary to ensure the integrity and reliability of system equipment. Underfrequency events typically occur 5 to 8 times per year on the Island Interconnected System and the resultant customer load interruptions are generally less than 30 minutes.
 3. As of 0800 Hours.
 4. Gross output including station service at Holyrood (24.5 MW) and improved NLH hydraulic output due to water levels (35 MW).
 5. Gross output from all Island sources (including Note 4).

Section 3 Island Peak Demand Information Previous Day Actual Peak and Current Day Forecast Peak

Tue, Sep 29, 2015	Actual Island Peak Demand ⁷	19:40	760 MW
Wed, Sep 30, 2015	Forecast Island Peak Demand		775 MW

Notes: 7. Island Demand is supplied by NLH generation and purchases, plus generation owned and operated by Newfoundland Power and Corner Brook Pulp & Paper (Deer Lake Power, DLP).