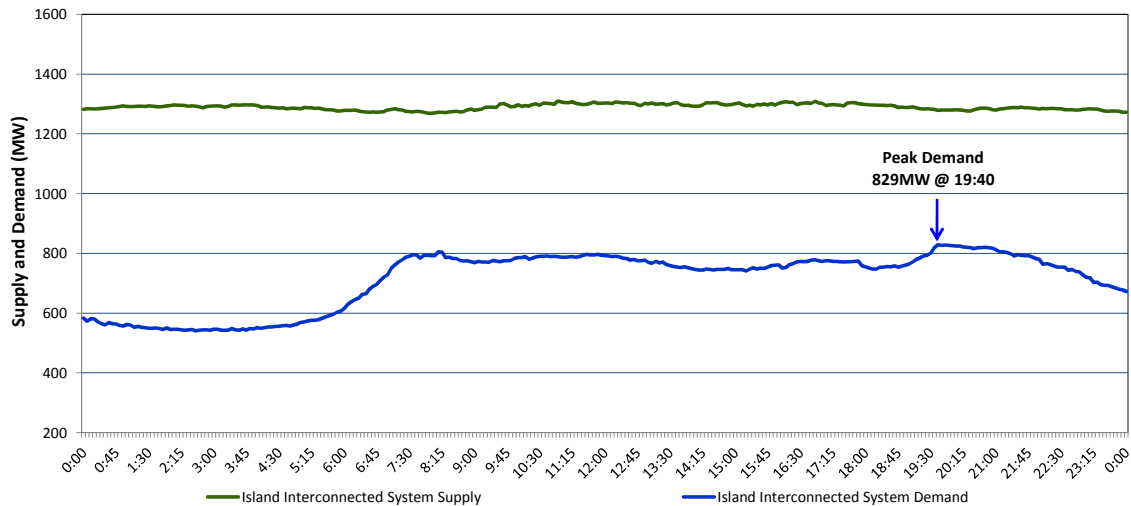


# Newfoundland Labrador Hydro (NLH)

## Supply and Demand Status Report Filed Monday, September 28, 2015

### Section 1 Island Interconnected System Supply and Demand Actual 24 Hour System Performance For Friday, September 25, 2015



#### Supply Notes For September 25, 2015

1,2

- A As of 1440 hours, June 06, 2015, Holyrood Unit 2 removed from service for annual maintenance (170 MW).
- B As of 1450 hours, June 24, 2015, Hawke's Bay Unit 548 (G2) unavailable (2.5 MW).
- C As of 0949 hours, August 01, 2015, Holyrood Unit 1 removed from service for annual maintenance (170 MW).
- D As of 1330 hours, August 19, 2015, Bay d'Espoir Unit 2 unavailable (76.5 MW).
- E As of 1042 hours, August 31, 2015, Stephenville Gas Turbine unavailable. Previously derated to 30 MW (50 MW).
- F As of 0808 hours, September 08, 2015, Cat Arm Unit 2 unavailable (67 MW).
- G As of 0904 hours, September 12, 2015, Holyrood Unit 3 available. Derated to 70 MW (150 MW).
- H As of 1212 hours, September 13, 2015, Hardwoods Gas Turbine available. Derated to 38 MW (50 MW). End A 20 MW, End B 19 MW.
- I As of 0803 hours, September 20, 2015, Bay d'Espoir Unit 1 unavailable. Previously derated to 40 MW (76.5 MW).

### Section 2 Island Interconnected Supply and Demand

Sat, Sep 26, 2015		Island System Outlook <sup>3</sup>	Seven-Day Forecast	Temperature (°C)		Island System Daily Peak Demand (MW) Forecast
				Morning	Evening	
Available Island System Supply: <sup>5</sup>	1,300	MW	Saturday, September 26, 2015	6	4	925
NLH Generation: <sup>4</sup>	990	MW	Sunday, September 27, 2015	4	11	945
NLH Power Purchases:	95	MW	Monday, September 28, 2015	15	16	775
Other Island Generation:	215	MW	Tuesday, September 29, 2015	16	17	815
Current St. John's Temperature:	6	°C	Wednesday, September 30, 2015	17	10	870
Current St. John's Windchill:	N/A	°C	Thursday, October 01, 2015	8	7	865
7-Day Island Peak Demand Forecast:	945	MW	Friday, October 02, 2015	7	6	885

#### Supply Notes For September 26, 2015

3

- Notes:
1. Generation outages for running and corrective maintenance are included. These are not unusual for power system operations. They generally do not impact customer supply. The power system operators schedule outages to system equipment whenever possible to coincide with periods when customer demands are low and sufficient supply reserves are available. However, from time to time equipment outages are necessary and reserves may be impacted.
  2. Due to the Island Interconnected System being isolated from the larger North American grid, when there is a sudden loss of large generating units some customer's load must be interrupted for short periods to bring generation output equal to customer demand. This automatic action of power system protection, referred to as underfrequency load shedding, is necessary to ensure the integrity and reliability of system equipment. Underfrequency events typically occur 5 to 8 times per year on the Island Interconnected System and the resultant customer load interruptions are generally less than 30 minutes.
  3. As of 0800 Hours.
  4. Gross output including station service at Holyrood (24.5 MW) and improved NLH hydraulic output due to water levels (35 MW).
  5. Gross output from all Island sources (including Note 4).

### Section 3 Island Peak Demand Information Previous Day Actual Peak and Current Day Forecast Peak

Fri, Sep 25, 2015	Actual Island Peak Demand <sup>7</sup>	19:40	829 MW
Sat, Sep 26, 2015	Forecast Island Peak Demand		925 MW

Notes: 7. Island Demand is supplied by NLH generation and purchases, plus generation owned and operated by Newfoundland Power and Corner Brook Pulp & Paper (Deer Lake Power, DLP).