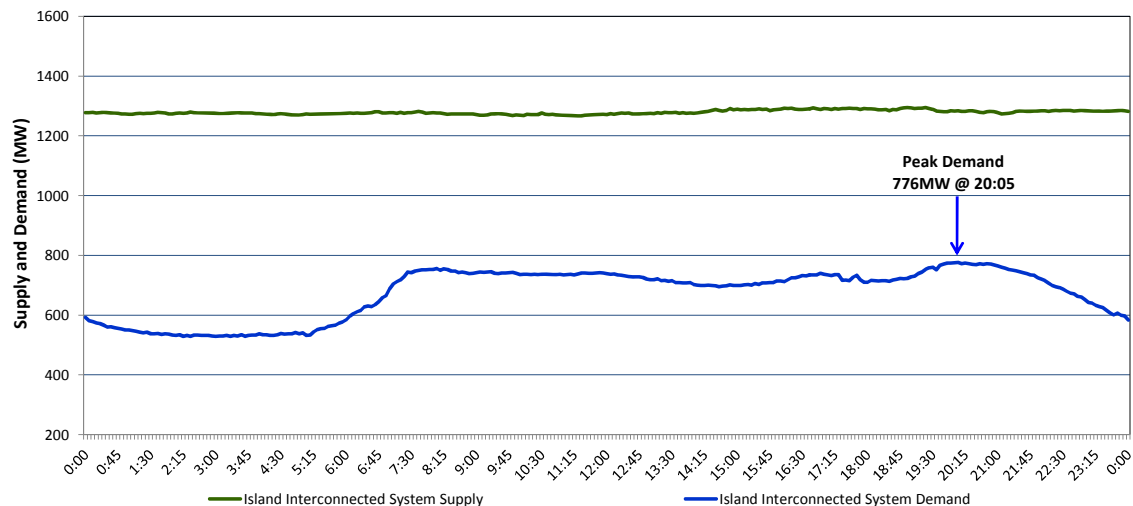


Newfoundland Labrador Hydro (NLH)

Supply and Demand Status Report Filed Friday, September 25, 2015

Section 1 Island Interconnected System Supply and Demand Actual 24 Hour System Performance For Thursday, September 24, 2015



Supply Notes For September 24, 2015 ^{1,2}

- A** As of 1440 hours, June 06, 2015, Holyrood Unit 2 removed from service for annual maintenance (170 MW).
- B** As of 1450 hours, June 24, 2015, Hawke's Bay Unit 548 (G2) unavailable (2.5 MW).
- C** As of 0949 hours, August 01, 2015, Holyrood Unit 1 removed from service for annual maintenance (170 MW).
- D** As of 1330 hours, August 19, 2015, Bay d'Espoir Unit 2 unavailable (76.5 MW).
- E** As of 1042 hours, August 31, 2015, Stephenville Gas Turbine unavailable. Previously derated to 30 MW (50 MW).
- F** As of 0808 hours, September 08, 2015, Cat Arm Unit 2 unavailable (67 MW).
- G** As of 0904 hours, September 12, 2015, Holyrood Unit 3 available. Derated to 70 MW (150 MW).
- H** As of 1212 hours, September 13, 2015, Hardwoods Gas Turbine available. Derated to 38 MW (50 MW). End A 20 MW, End B 19 MW.
- I** As of 0803 hours, September 20, 2015, Bay d'Espoir Unit 1 unavailable. Previously derated to 40 MW (76.5 MW).

Section 2 Island Interconnected Supply and Demand

Fri, Sep 25, 2015 Island System Outlook ³		Seven-Day Forecast	Temperature (°C)		Island System Daily Peak Demand (MW) Forecast
			Morning	Evening	
Available Island System Supply: ⁵	1,285 MW	Friday, September 25, 2015	8	7	855
NLH Generation: ⁴	990 MW	Saturday, September 26, 2015	6	4	935
NLH Power Purchases:	110 MW	Sunday, September 27, 2015	4	11	920
Other Island Generation:	185 MW	Monday, September 28, 2015	15	16	800
Current St. John's Temperature:	7 °C	Tuesday, September 29, 2015	17	18	810
Current St. John's Windchill:	N/A °C	Wednesday, September 30, 2015	17	14	830
7-Day Island Peak Demand Forecast:	955 MW	Thursday, October 01, 2015	18	7	955

Supply Notes For September 25, 2015 ³

- Notes:
- Generation outages for running and corrective maintenance are included. These are not unusual for power system operations. They generally do not impact customer supply. The power system operators schedule outages to system equipment whenever possible to coincide with periods when customer demands are low and sufficient supply reserves are available. However, from time to time equipment outages are necessary and reserves may be impacted.
 - Due to the Island Interconnected System being isolated from the larger North American grid, when there is a sudden loss of large generating units some customer's load must be interrupted for short periods to bring generation output equal to customer demand. This automatic action of power system protection, referred to as underfrequency load shedding, is necessary to ensure the integrity and reliability of system equipment. Underfrequency events typically occur 5 to 8 times per year on the Island Interconnected System and the resultant customer load interruptions are generally less than 30 minutes.
 - As of 0800 Hours.
 - Gross output including station service at Holyrood (24.5 MW) and improved NLH hydraulic output due to water levels (35 MW).
 - Gross output from all Island sources (including Note 4).

Section 3 Island Peak Demand Information Previous Day Actual Peak and Current Day Forecast Peak

Thu, Sep 24, 2015	Actual Island Peak Demand ⁷	20:05	776 MW
Fri, Sep 25, 2015	Forecast Island Peak Demand		855 MW

Notes: 7. Island Demand is supplied by NLH generation and purchases, plus generation owned and operated by Newfoundland Power and Corner Brook Pulp & Paper (Deer Lake Power, DLP).