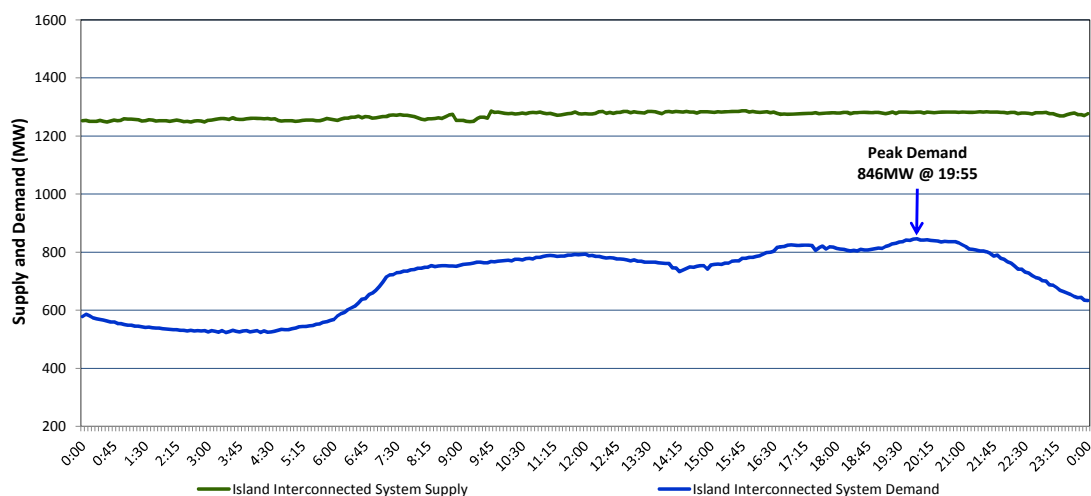


Newfoundland Labrador Hydro (NLH) Supply and Demand Status Report Filed Thursday, September 17, 2015

Section 1 Island Interconnected System Supply and Demand Actual 24 Hour System Performance For Wednesday, September 16, 2015



Supply Notes For September 16, 2015

- A As of 1440 hours, June 06, 2015, Holyrood Unit 2 removed from service for annual maintenance (170 MW).
- B As of 1450 hours, June 24, 2015, Hawke's Bay Unit 548 (G2) unavailable (2.5 MW).
- C As of 0949 hours, August 01, 2015, Holyrood Unit 1 removed from service for annual maintenance (170 MW).
- D As of 1330 hours, August 19, 2015, Bay d'Espoir Unit 2 unavailable (76.5 MW).
- E As of 1042 hours, August 31, 2015, Stephenville Gas Turbine unavailable. Previously derated to 30 MW (50 MW).
- F As of 0808 hours, September 08, 2015, Cat Arm Unit 2 unavailable (67 MW).
- G As of 0904 hours, September 12, 2015, Holyrood Unit 3 available. Derated to 70 MW (150 MW).
- H As of 1212 hours, September 13, 2015, Hardwoods Gas Turbine available. Derated to 38 MW (50 MW). End A 20 MW, End B 19 MW.
- I As of 1323 hours, September 13, 2015, Bay d'Espoir Unit 1 unavailable. Previously derated to 45 MW (76.5 MW).
- J As of 1630 hours, September 13, 2015, Paradise River Unit unavailable (8 MW).

Section 2 Island Interconnected Supply and Demand

Thu, Sep 17, 2015		Island System Outlook ³		Seven-Day Forecast		Temperature (°C)		Island System Daily Peak Demand (MW)
						Morning	Evening	Forecast
Available Island System Supply: ⁵	1,300	MW		Thursday, September 17, 2015		9	13	860
NLH Generation: ⁴	980	MW		Friday, September 18, 2015		17	9	810
NLH Power Purchases:	120	MW		Saturday, September 19, 2015		13	19	755
Other Island Generation:	200	MW		Sunday, September 20, 2015		18	18	735
Current St. John's Temperature:	7	°C		Monday, September 21, 2015		16	12	805
Current St. John's Windchill:	N/A	°C		Tuesday, September 22, 2015		12	11	770
7-Day Island Peak Demand Forecast:	860	MW		Wednesday, September 23, 2015		13	12	760

Supply Notes For September 17, 2015

- Notes:
1. Generation outages for running and corrective maintenance are included. These are not unusual for power system operations. They generally do not impact customer supply. The power system operators schedule outages to system equipment whenever possible to coincide with periods when customer demands are low and sufficient supply reserves are available. However, from time to time equipment outages are necessary and reserves may be impacted.
 2. Due to the Island Interconnected System being isolated from the larger North American grid, when there is a sudden loss of large generating units some customer's load must be interrupted for short periods to bring generation output equal to customer demand. This automatic action of power system protection, referred to as underfrequency load shedding, is necessary to ensure the integrity and reliability of system equipment. Underfrequency events typically occur 5 to 8 times per year on the Island Interconnected System and the resultant customer load interruptions are generally less than 30 minutes.
 3. As of 0800 Hours.
 4. Gross output including station service at Holyrood (24.5 MW) and improved NLH hydraulic output due to water levels (35 MW).
 5. Gross output from all Island sources (including Note 4).

Section 3 Island Peak Demand Information Previous Day Actual Peak and Current Day Forecast Peak

Wed, Sep 16, 2015	Actual Island Peak Demand ⁷	19:55	846 MW
Thu, Sep 17, 2015	Forecast Island Peak Demand		860 MW

Notes: 7. Island Demand is supplied by NLH generation and purchases, plus generation owned and operated by Newfoundland Power and Corner Brook Pulp & Paper (Deer Lake Power, DLP).