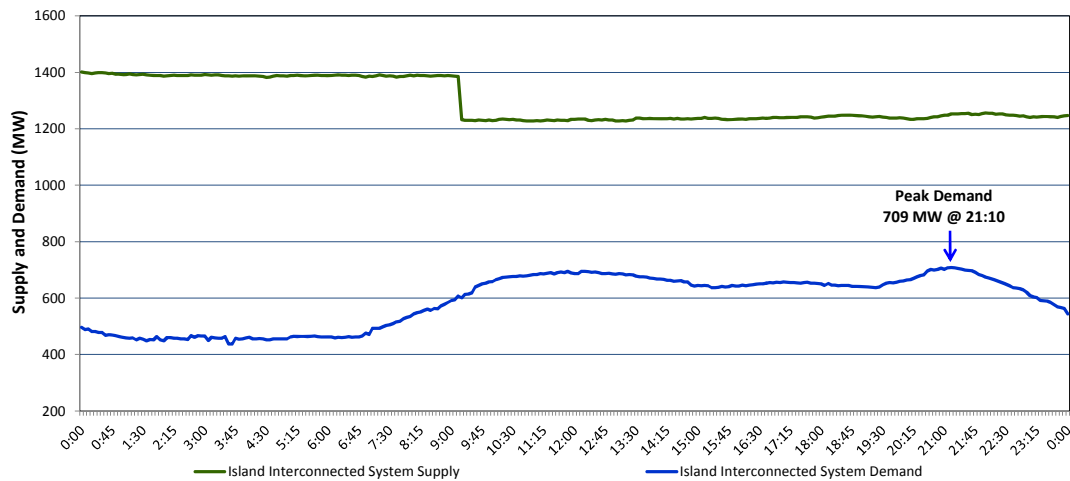


# Newfoundland Labrador Hydro (NLH)

## Supply and Demand Status Report Filed Monday, August 17, 2015 (Revised - August 19, 2015)

### Section 1 Island Interconnected System Supply and Demand Actual 24 Hour System Performance For Sunday, August 16, 2015



#### Supply Notes For August 16, 2015

- A As of 1333 hours, April 10, 2015, Holyrood Unit 3 removed from service for annual maintenance (150 MW).
- B As of 1440 hours, June 06, 2015, Holyrood Unit 2 removed from service for annual maintenance (170 MW).
- C As of 1450 hours, June 24, 2015, Hawke's Bay Unit 548 (G2) unavailable (2.5 MW).
- D As of 1225 hours, July 30, 2015, Stephenville Gas Turbine derated to 30 MW (50 MW). End A 25 MW, End B 15 MW.
- E As of 1602 hours, July 31, 2015, Hardwoods Gas Turbine derated to 38 MW (50 MW). End A 20 MW, End B 19 MW.
- F As of 0949 hours, August 01, 2015, Holyrood Unit 1 removed from service for annual maintenance (170 MW).
- G As of 0816 hours, August 07, 2015, Nalcor Grand Falls Unit 9 unavailable (30 MW). Net loss to the system is 4 MW.
- H As of 1447 hours, August 14, 2015, Bay d'Espoir Unit 1 derated to 45 MW (76.5 MW).
- I At 0912 hours, August 16, 2015, Bay d'Espoir Unit 7 removed from service for annual maintenance (154.4 MW).

### Section 2 Island Interconnected Supply and Demand

Mon, Aug 17, 2015 Island System Outlook <sup>3</sup>			Temperature (°C)		Island System Daily Peak Demand (MW) Forecast
			Morning	Evening	
Available Island System Supply: <sup>5</sup>	1,300	MW	Monday, August 17, 2015		775
NLH Generation: <sup>4</sup>	980	MW	Tuesday, August 18, 2015		780
NLH Power Purchases:	120	MW	Wednesday, August 19, 2015		770
Other Island Generation:	200	MW	Thursday, August 20, 2015		785
Current St. John's Temperature:	18	°C	Friday, August 21, 2015		775
Current St. John's Windchill:	N/A	°C	Saturday, August 22, 2015		760
7-Day Island Peak Demand Forecast:	785	MW	Sunday, August 23, 2015		745

#### Supply Notes For August 17, 2015

- Notes:
1. Generation outages for running and corrective maintenance are included. These are not unusual for power system operations. They generally do not impact customer supply. The power system operators schedule outages to system equipment whenever possible to coincide with periods when customer demands are low and sufficient supply reserves are available. However, from time to time equipment outages are necessary and reserves may be impacted.
  2. Due to the Island Interconnected System being isolated from the larger North American grid, when there is a sudden loss of large generating units some customer's load must be interrupted for short periods to bring generation output equal to customer demand. This automatic action of power system protection, referred to as underfrequency load shedding, is necessary to ensure the integrity and reliability of system equipment. Underfrequency events typically occur 5 to 8 times per year on the Island Interconnected System and the resultant customer load interruptions are generally less than 30 minutes.
  3. As of 0800 Hours.
  4. Gross output including station service at Holyrood (24.5 MW) and improved NLH hydraulic output due to water levels (35 MW).
  5. Gross output from all Island sources (including Note 4).

### Section 3 Island Peak Demand Information Previous Day Actual Peak and Current Day Forecast Peak

Sun, Aug 16, 2015	Actual Island Peak Demand <sup>7</sup>	21:10	709 MW
Mon, Aug 17, 2015	Forecast Island Peak Demand		775 MW

Notes: 7. Island Demand is supplied by NLH generation and purchases, plus generation owned and operated by Newfoundland Power and Corner Brook Pulp & Paper (Deer Lake Power, DLP).