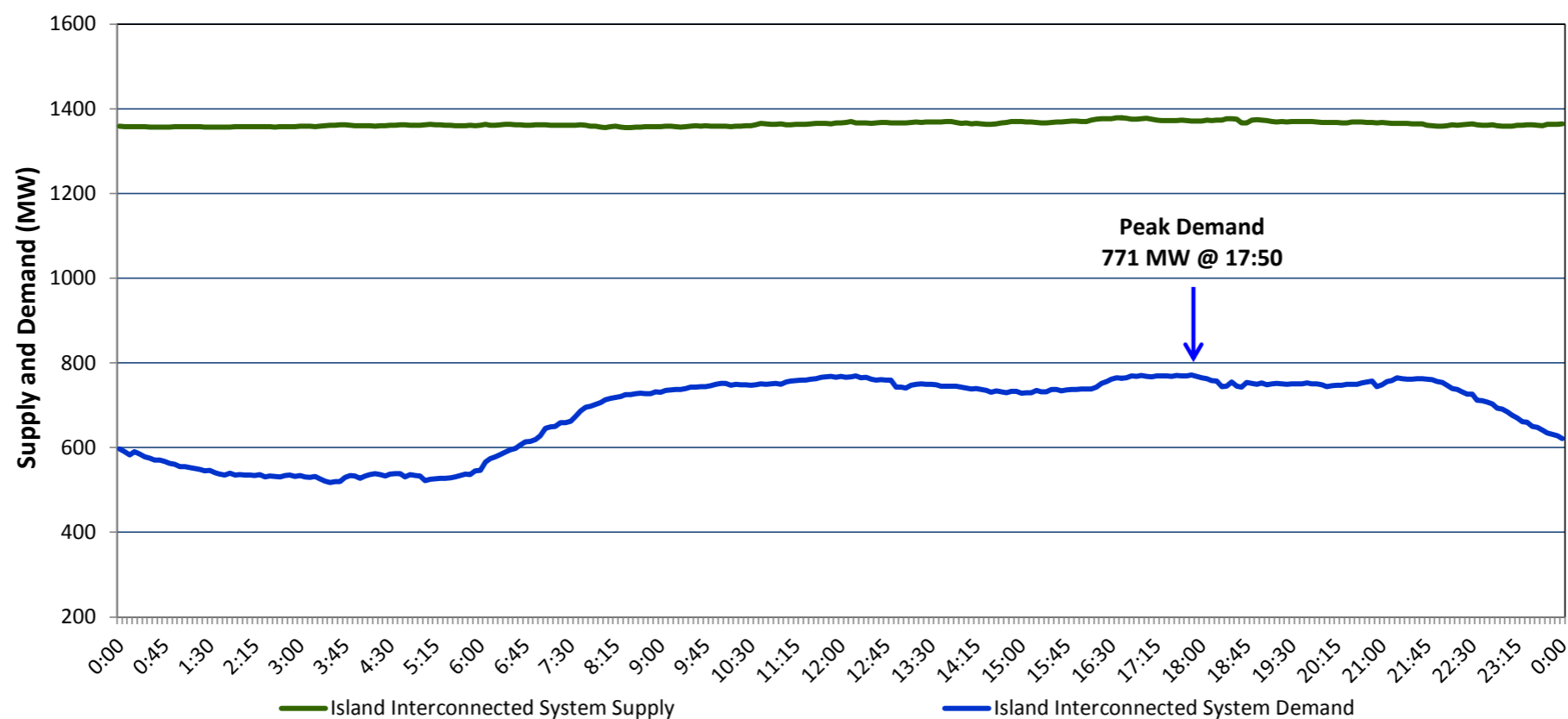


**Newfoundland Labrador Hydro (NLH)  
Supply and Demand Status Report Filed Friday, July 03, 2015**

**Section 1  
Island Interconnected System Supply and Demand  
Actual 24 Hour System Performance For Thursday, July 02, 2015**



**Supply Notes For July 02, 2015**

- A As of 1823 hours, March 01, 2015, Hardwoods Gas Turbine End B unavailable (25 MW).
- B As of 1333 hours, April 10, 2015, Holyrood Unit 3 removed from service for annual maintenance (150 MW).
- C As of 0843 hours, April 26, 2015, Bay d'Espoir Unit 1 removed from service for annual maintenance (76.5 MW).
- D As of 0808 hours, May 27, 2015, Bay d'Espoir Unit 5 removed from service for annual maintenance (76.5 MW).
- E As of 0808 hours, May 27, 2015, Bay d'Espoir Unit 6 removed from service for annual maintenance (76.5 MW).
- F As of 0824 hours, May 29, 2015, Hardwoods Gas Turbine End A unavailable (25 MW).
- G As of 1440 hours, June 06, 2015, Holyrood Unit 2 removed from service for annual maintenance (170 MW).
- H As of 1450 hours, June 24, 2015, Hawke's Bay Unit 548 (G2) unavailable (2.5 MW).

**Section 2  
Island Interconnected Supply and Demand**

Fri, Jul 03, 2015	Island System Outlook <sup>3</sup>	Seven-Day Forecast	Temperature (°C)		Island System Daily Peak Demand (MW) Forecast
			Morning	Evening	
Available Island System Supply: <sup>5</sup>	1,390 MW	Friday, July 03, 2015	13	15	795
NLH Generation: <sup>4</sup>	1,090 MW	Saturday, July 04, 2015	14	15	765
NLH Power Purchases:	115 MW	Sunday, July 05, 2015	14	15	750
Other Island Generation:	185 MW	Monday, July 06, 2015	12	9	790
Current St. John's Temperature:	9 °C	Tuesday, July 07, 2015	9	9	830
Current St. John's Windchill:	N/A °C	Wednesday, July 08, 2015	11	11	765
7-Day Island Peak Demand Forecast:	830 MW	Thursday, July 09, 2015	12	15	785

**Supply Notes For July 03, 2015**

- Notes:
1. Generation outages for running and corrective maintenance are included. These are not unusual for power system operations. They generally do not impact customer supply. The power system operators schedule outages to system equipment whenever possible to coincide with periods when customer demands are low and sufficient supply reserves are available. However, from time to time equipment outages are necessary and reserves may be impacted.
  2. Due to the Island Interconnected System being isolated from the larger North American grid, when there is a sudden loss of large generating units some customer's load must be interrupted for short periods to bring generation output equal to customer demand. This automatic action of power system protection, referred to as underfrequency load shedding, is necessary to ensure the integrity and reliability of system equipment. Underfrequency events typically occur 5 to 8 times per year on the Island Interconnected System and the resultant customer load interruptions are generally less than 30 minutes.
  3. As of 0800 Hours.
  4. Gross output including station service at Holyrood (24.5 MW) and improved NLH hydraulic output due to water levels (35 MW).
  5. Gross output from all Island sources (including Note 4).

**Section 3  
Island Peak Demand Information  
Previous Day Actual Peak and Current Day Forecast Peak**

Thu, Jul 02, 2015	Actual Island Peak Demand <sup>7</sup>	17:50	771 MW
Fri, Jul 03, 2015	Forecast Island Peak Demand		795 MW

Notes: 7. Island Demand is supplied by NLH generation and purchases, plus generation owned and operated by Newfoundland Power and Corner Brook Pulp & Paper (Deer Lake Power, DLP).