

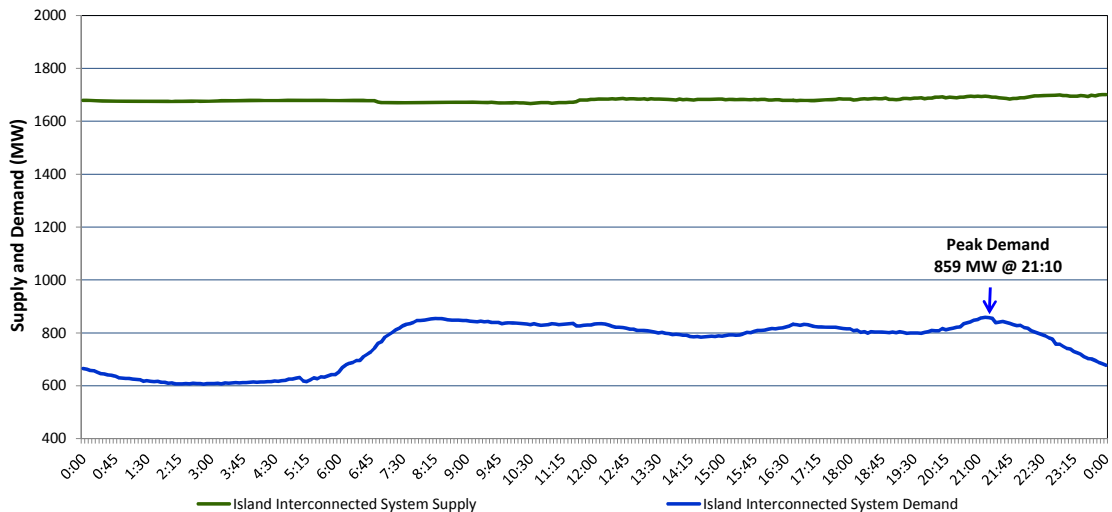
# Newfoundland Labrador Hydro (NLH)

## Supply and Demand Status Report Filed Thursday, May 21, 2015

### Section 1

#### Island Interconnected System Supply and Demand

#### Actual 24 Hour System Performance For Wednesday, May 20, 2015



#### Supply Notes For May 20, 2015

<sup>1,2</sup>

- A As of 1823 hours, March 01, 2015, Hardwoods Gas Turbine End B unavailable (25 MW).
- B As of 1333 hours, April 10, 2015, Holyrood Unit 3 removed from service for annual maintenance (150 MW).
- C As of 0843 hours, April 26, 2015, Bay d'Espoir Unit 1 removed from service for annual maintenance (76.5 MW).
- D As of 1034 hours, May 1, 2015, Stephenville Gas Turbine unavailable (50 MW).
- E As of 1702 hours, May 1, 2015, Nalcor Exploits Bishop's Falls plant production near normal 11 MW (18 MW).
- F As of 1520 hours, May 10, 2015, Paradise River Unit removed from service for annual maintenance (8 MW).

### Section 2

#### Island Interconnected Supply and Demand

Thu, May 21, 2015    Island System Outlook <sup>3</sup>			Seven-Day Forecast		Temperature (°C)		Island System Daily Peak Demand (MW)
					Morning	Evening	Forecast
Available Island System Supply: <sup>5</sup>	1,640	MW	Thursday, May 21, 2015		10	6	915
NLH Generation: <sup>4</sup>	1,315	MW	Friday, May 22, 2015		9	9	880
NLH Power Purchases:	115	MW	Saturday, May 23, 2015		10	9	855
Other Island Generation:	210	MW	Sunday, May 24, 2015		7	9	920
Current St. John's Temperature:	11	°C	Monday, May 25, 2015		7	8	975
Current St. John's Windchill:	N/A	°C	Tuesday, May 26, 2015		9	12	900
7-Day Island Peak Demand Forecast:	975	MW	Wednesday, May 27, 2015		13	15	870

#### Supply Notes For May 21, 2015

<sup>3</sup>

- G At 0201 hours, May 21, 2015, Cat Arm Unit 2 unavailable (67 MW).

- Notes:
1. Generation outages for running and corrective maintenance are included. These are not unusual for power system operations. They generally do not impact customer supply. The power system operators schedule outages to system equipment whenever possible to coincide with periods when customer demands are low and sufficient supply reserves are available. However, from time to time equipment outages are necessary and reserves may be impacted.
  2. Due to the Island Interconnected System being isolated from the larger North American grid, when there is a sudden loss of large generating units some customer's load must be interrupted for short periods to bring generation output equal to customer demand. This automatic action of power system protection, referred to as underfrequency load shedding, is necessary to ensure the integrity and reliability of system equipment. Underfrequency events typically occur 5 to 8 times per year on the Island Interconnected System and the resultant customer load interruptions are generally less than 30 minutes.
  3. As of 0800 Hours.
  4. Gross output including station service at Holyrood (24.5 MW) and improved NLH hydraulic output due to water levels (35 MW).
  5. Gross output from all Island sources (including Note 4).

### Section 3

#### Island Peak Demand Information

#### Previous Day Actual Peak and Current Day Forecast Peak

Wed, May 20, 2015	Actual Island Peak Demand <sup>7</sup>	21:10	859 MW
Thu, May 21, 2015	Forecast Island Peak Demand		915 MW

Notes: 7. Island Demand is supplied by NLH generation and purchases, plus generation owned and operated by Newfoundland Power and Corner Brook Pulp & Paper (Deer Lake Power, DLP).