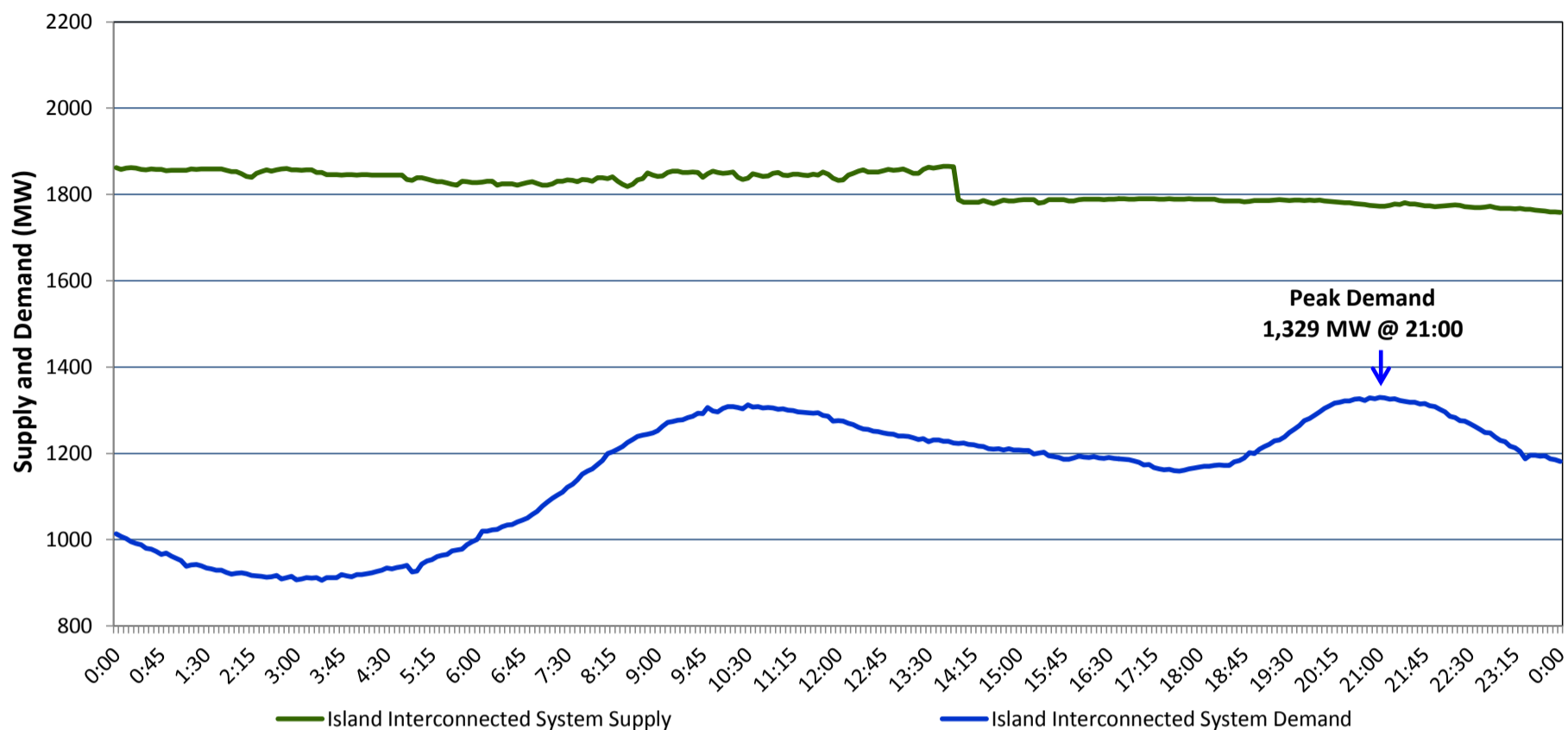


Newfoundland Labrador Hydro (NLH) Supply and Demand Status Report Filed Monday, April 06, 2015

Section 1 Island Interconnected System Supply and Demand Actual 24 Hour System Performance For Sunday, April 05, 2015



Supply Notes For April 05, 2015 ^{1,2}

- A As of 1823 hours, March 01, 2015, Hardwoods Gas Turbine End B unavailable (25 MW).
- B As of 1310 hours, March 27, 2015, Holyrood Unit 3 removed from service for economic dispatch (150 MW).
- C At 1400 hours, April 05, 2015, Bay d'Espoir Unit 2 removed from service for annual maintenance (76.5 MW).

Section 2 Island Interconnected Supply and Demand

Mon, Apr 06, 2015 Island System Outlook ³	Seven-Day Forecast	Temperature (°C)		Island System Daily Peak Demand (MW) Forecast
		Morning	Evening	
Available Island System Supply: ⁵ 1,925 MW	Monday, April 06, 2015	-2	-5	1,400
NLH Generation: ⁴ 1,590 MW	Tuesday, April 07, 2015	-6	-4	1,410
NLH Power Purchases: 135 MW	Wednesday, April 08, 2015	-5	-6	1,385
Other Island Generation: 200 MW	Thursday, April 09, 2015	-9	-5	1,380
Current St. John's Temperature: -3 °C	Friday, April 10, 2015	-6	-1	1,425
Current St. John's Windchill: -10 °C	Saturday, April 11, 2015	0	0	1,160
7-Day Island Peak Demand Forecast: 1,425 MW	Sunday, April 12, 2015	-1	-1	1,100

Supply Notes For April 06, 2015 ³

- D At 0309 hours, April 06, 2015, Holyrood Unit 3 returned to service (150 MW).

- Notes:
1. Generation outages for running and corrective maintenance are included. These are not unusual for power system operations. They generally do not impact customer supply. The power system operators schedule outages to system equipment whenever possible to coincide with periods when customer demands are low and sufficient supply reserves are available. However, from time to time equipment outages are necessary and reserves may be impacted.
 2. Due to the Island Interconnected System being isolated from the larger North American grid, when there is a sudden loss of large generating units some customer's load must be interrupted for short periods to bring generation output equal to customer demand. This automatic action of power system protection, referred to as underfrequency load shedding, is necessary to ensure the integrity and reliability of system equipment. Underfrequency events typically occur 5 to 8 times per year on the Island Interconnected System and the resultant customer load interruptions are generally less than 30 minutes.
 3. As of 0800 Hours.
 4. Gross output including station service at Holyrood (24.5 MW) and improved NLH hydraulic output due to water levels (35 MW).
 5. Gross output from all Island sources (including Note 4).

Section 3 Island Peak Demand Information Previous Day Actual Peak and Current Day Forecast Peak

Sun, Apr 05, 2015	Actual Island Peak Demand ⁷	21:00	1,329 MW
Mon, Apr 06, 2015	Forecast Island Peak Demand		1,400 MW

- Notes: 7. Island Demand is supplied by NLH generation and purchases, plus generation owned and operated by Newfoundland Power and Corner Brook Pulp & Paper (Deer Lake Power, DLP).