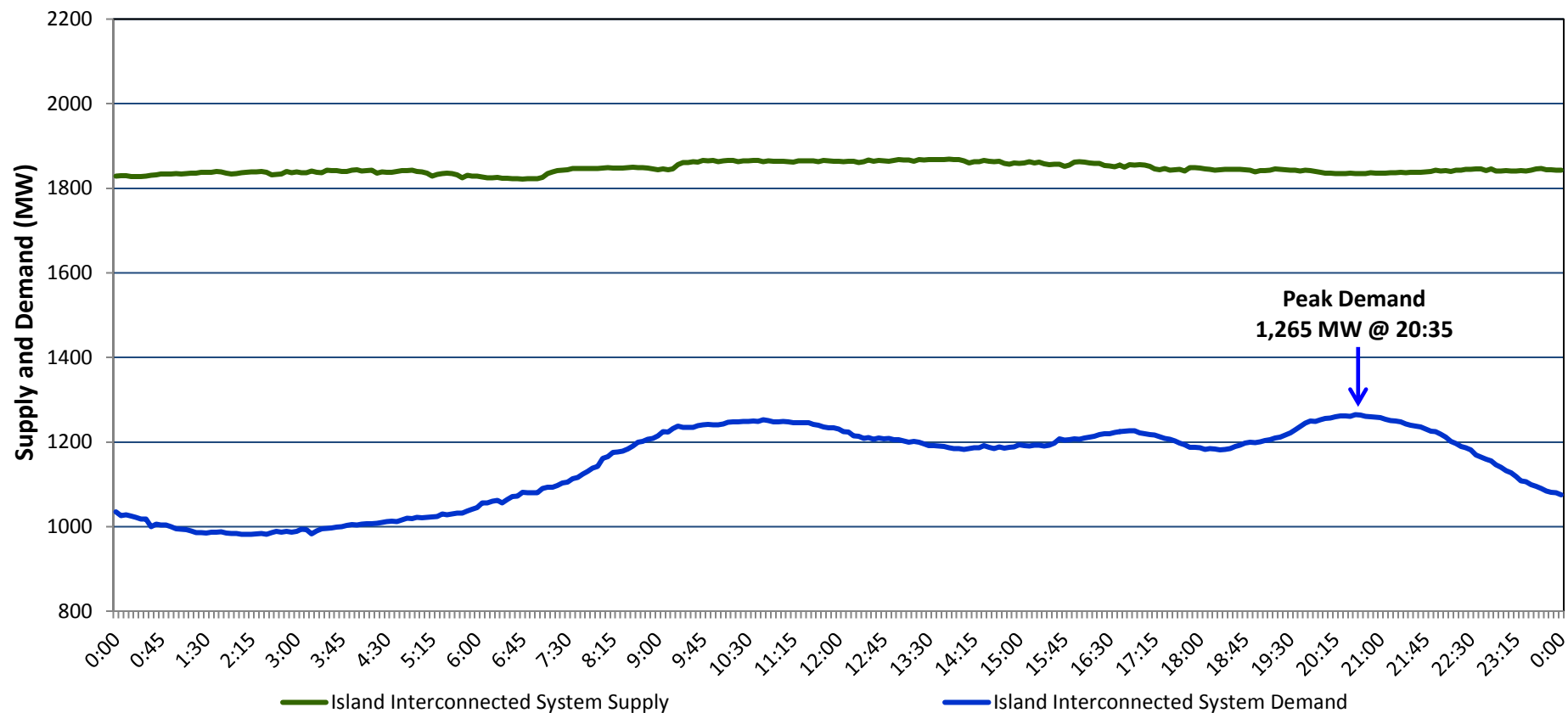


## Newfoundland Labrador Hydro (NLH)

### Supply and Demand Status Report Filed Monday, March 30, 2015 (Revised - Apr. 01, 2015)

#### Section 1

##### Island Interconnected System Supply and Demand Actual 24 Hour System Performance For Sunday, March 29, 2015



#### Supply Notes For March 29, 2015 <sup>1,2</sup>

- A** As of 1823 hours, March 01, 2015, Hardwoods Gas Turbine End B unavailable (25 MW).  
**B** As of 1310 hours, March 27, 2015, Holyrood Unit 3 removed from service for economic dispatch (150 MW).

#### Section 2

##### Island Interconnected Supply and Demand

Mon, Mar 30, 2015 Island System Outlook <sup>3</sup>			Temperature (°C)		Island System Daily Peak Demand (MW)	
			Morning	Evening	Forecast	Adjusted <sup>6</sup>
Available Island System Supply: <sup>5</sup>	1,845	MW	Monday, March 30, 2015		1,385	1,290
NLH Generation: <sup>4</sup>	1,520	MW	Tuesday, March 31, 2015		1,345	1,250
NLH Power Purchases:	120	MW	Wednesday, April 01, 2015		1,325	1,325
Other Island Generation:	205	MW	Thursday, April 02, 2015		1,365	1,365
Current St. John's Temperature:	-4	°C	Friday, April 03, 2015		1,310	1,310
Current St. John's Windchill:	-10	°C	Saturday, April 04, 2015		1,275	1,275
7-Day Island Peak Demand Forecast:	1,385	MW	Sunday, April 05, 2015		1,150	1,150

#### Supply Notes For March 30, 2015 <sup>3</sup>

- Notes: 1. Generation outages for running and corrective maintenance are included. These are not unusual for power system operations. They generally do not impact customer supply. The power system operators schedule outages to system equipment whenever possible to coincide with periods when customer demands are low and sufficient supply reserves are available. However, from time to time equipment outages are necessary and reserves may be impacted.
2. Due to the Island Interconnected System being isolated from the larger North American grid, when there is a sudden loss of large generating units some customer's load must be interrupted for short periods to bring generation output equal to customer demand. This automatic action of power system protection, referred to as underfrequency load shedding, is necessary to ensure the integrity and reliability of system equipment. Underfrequency events typically occur 5 to 8 times per year on the Island Interconnected System and the resultant customer load interruptions are generally less than 30 minutes.
3. As of 0800 Hours.
4. Gross output including station service at Holyrood (24.5 MW) and improved NLH hydraulic output due to water levels (35 MW).
5. Gross output from all Island sources (including Note 4).
6. Adjusted for CBP&P interruptible load (when applicable) and the impact of voltage reduction.

#### Section 3

##### Island Peak Demand Information Previous Day Actual Peak and Current Day Forecast Peak

Sun, Mar 29, 2015	Actual Island Peak Demand <sup>7</sup>	20:35	1,265 MW
Mon, Mar 30, 2015	Forecast Island Peak Demand		1,385 MW

Notes: 7. Island Demand is supplied by NLH generation and purchases, plus generation owned and operated by Newfoundland Power and Corner Brook Pulp & Paper (Deer Lake Power, DLP).