

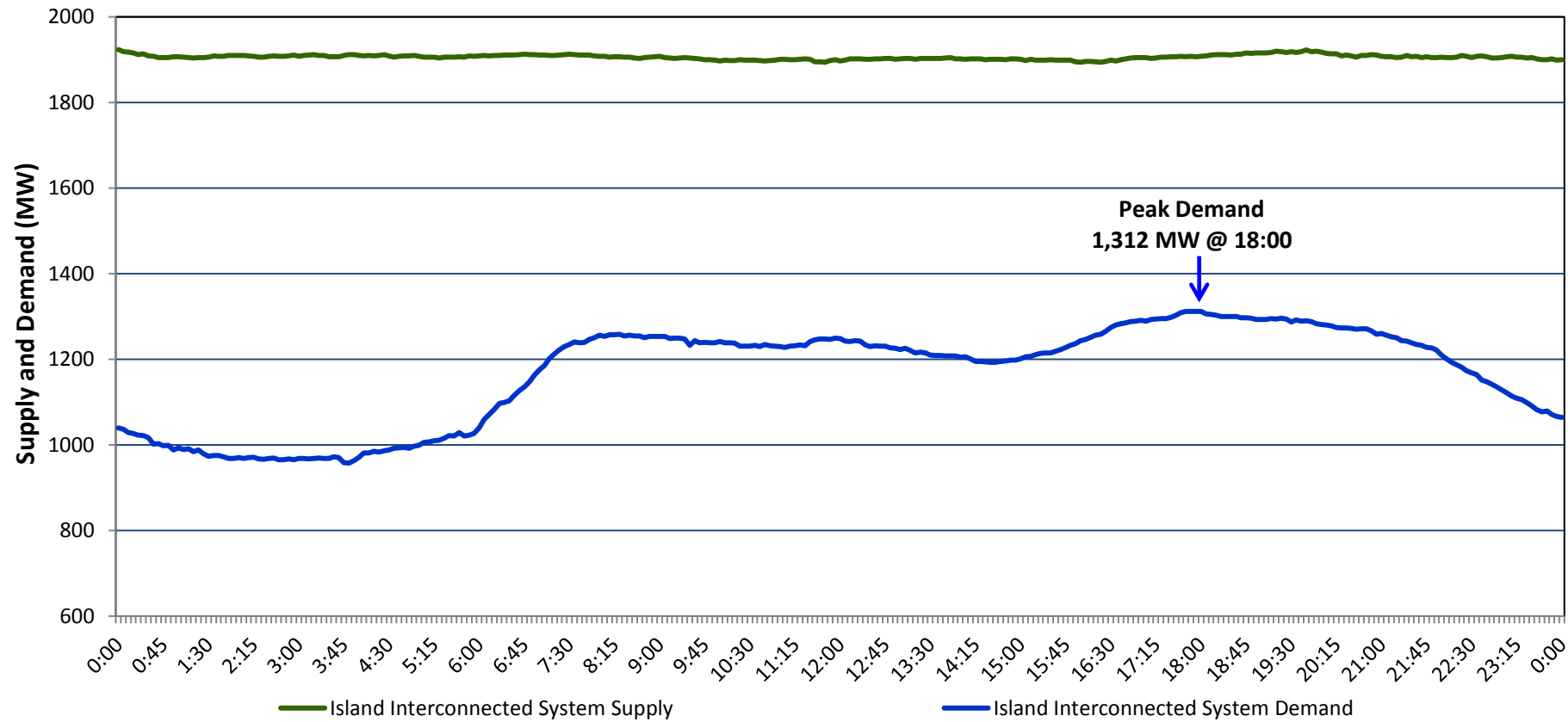
# Newfoundland Labrador Hydro (NLH)

## Supply and Demand Status Report Filed Tuesday, February 24, 2015

### Section 1

#### Island Interconnected System Supply and Demand

#### Actual 24 Hour System Performance For Monday, February 23, 2015



**Supply Notes For February 23, 2015** <sup>1,2</sup>

### Section 2

#### Island Interconnected Supply and Demand

Tue, Feb 24, 2015 Island System Outlook <sup>3</sup>			Seven-Day Forecast		Temperature (°C)		Island System Daily Peak Demand (MW)	
					Morning	Evening	Forecast	Adjusted <sup>6</sup>
Available Island System Supply: <sup>5</sup>	1,945	MW	Tuesday, February 24, 2015		-2	-10	1,510	1,410
NLH Generation: <sup>4</sup>	1,570	MW	Wednesday, February 25, 2015		-12	-5	1,550	1,450
NLH Power Purchases:	165	MW	Thursday, February 26, 2015		-2	-5	1,500	1,400
Other Island Generation:	210	MW	Friday, February 27, 2015		-8	-7	1,525	1,425
Current St. John's Temperature:	-3	°C	Saturday, February 28, 2015		-12	-11	1,600	1,500
Current St. John's Windchill:	-10	°C	Sunday, March 01, 2015		-10	-6	1,450	1,355
7-Day Island Peak Demand Forecast:	1,600	MW	Monday, March 02, 2015		-4	-2	1,450	1,355

**Supply Notes For February 24, 2015** <sup>3</sup>

- Notes:
1. Generation outages for running and corrective maintenance are included. These are not unusual for power system operations. They generally do not impact customer supply. The power system operators schedule outages to system equipment whenever possible to coincide with periods when customer demands are low and sufficient supply reserves are available. However, from time to time equipment outages are necessary and reserves may be impacted.
  2. Due to the Island Interconnected System being isolated from the larger North American grid, when there is a sudden loss of large generating units some customer's load must be interrupted for short periods to bring generation output equal to customer demand. This automatic action of power system protection, referred to as underfrequency load shedding, is necessary to ensure the integrity and reliability of system equipment. Underfrequency events typically occur 5 to 8 times per year on the Island Interconnected System and the resultant customer load interruptions are generally less than 30 minutes.
  3. As of 0800 Hours.
  4. Gross output including station service at Holyrood (24.5 MW) and improved NLH hydraulic output due to water levels (35 MW).
  5. Gross output from all Island sources (including Note 4).
  6. Adjusted for CBP&P interruptible load (when applicable) and the impact of voltage reduction.

### Section 3

#### Island Peak Demand Information

#### Previous Day Actual Peak and Current Day Forecast Peak

Mon, Feb 23, 2015	Actual Island Peak Demand <sup>7</sup>	18:00	1,312 MW
Tue, Feb 24, 2015	Forecast Island Peak Demand		1,510 MW

Notes: 7. Island Demand is supplied by NLH generation and purchases, plus generation owned and operated by Newfoundland Power and Corner Brook Pulp & Paper (Deer Lake Power, DLP).