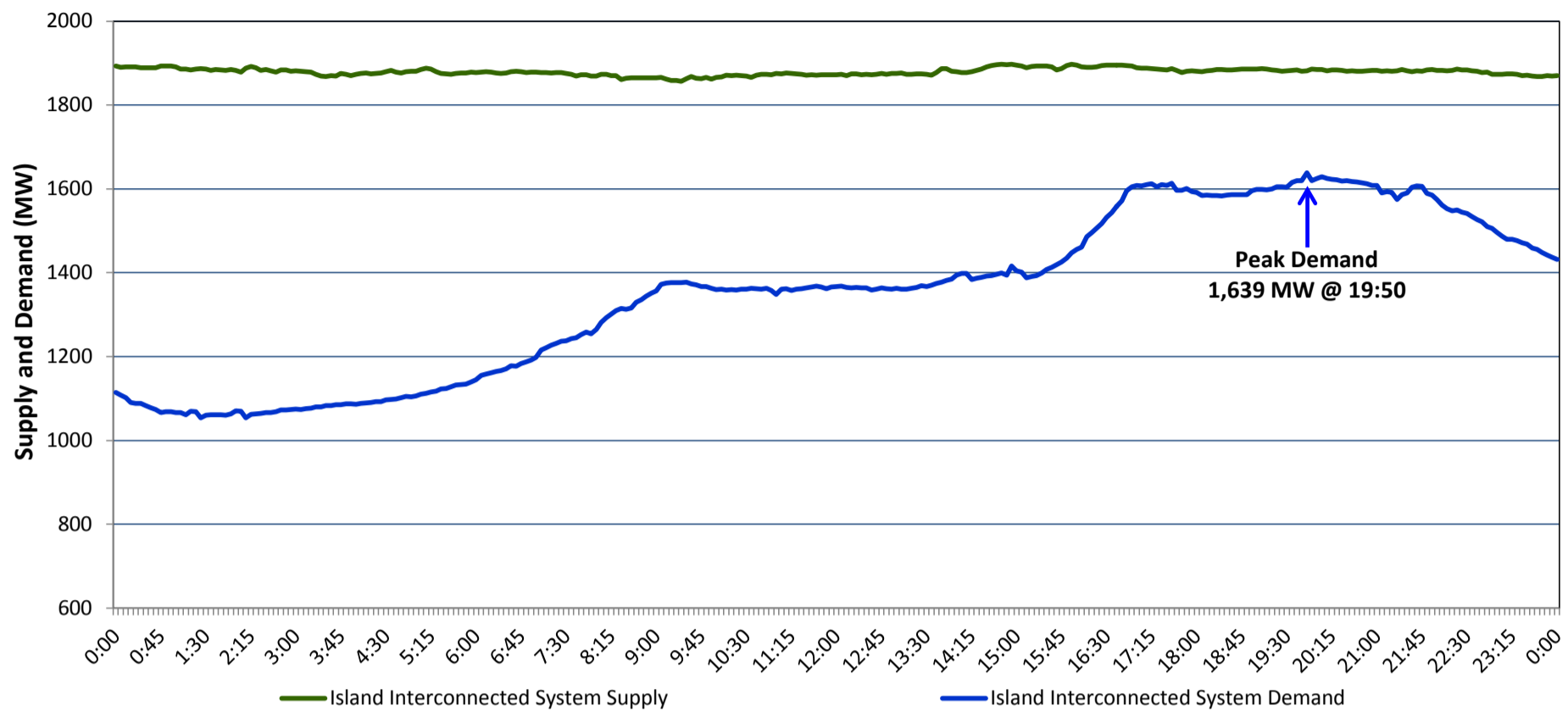


**Newfoundland Labrador Hydro (NLH)
Supply and Demand Status Report Filed Monday, January 05, 2015**

**Section 1
Island Interconnected System Supply and Demand
Actual 24 Hour System Performance For Saturday, January 03, 2015**



Supply Notes for January 03, 2015^{1,2}

- A** As of 1000 hours, November 21, 2014, Nalcor Exploits Unit 4 unavailable due to a forced outage (30 MW). Net impact to system 4 MW (the excess water utilised by other Nalcor Grand Falls Units 5 to 8).
- B** As of 1315 hours, December 15, 2014, the Stephenville Gas Turbine End 'B' unavailable (25 MW).
- C** As of 1012 hours, January 01, 2015, Nalcor Grand Falls plant derated due to icing conditions (23 MW).

**Section 2
Island Interconnected Supply and Demand**

Sun, Jan 04, 2015	Island System Outlook ³	Seven-Day Forecast	Temperature (°C)		Island System Daily Peak Demand (MW)	
			Morning	Evening	Forecast	Adjusted ⁶
Available Island System Supply: ⁵	1,860 MW	Sunday, January 04, 2015	-16	-11	1,575	1,475
NLH Generation: ⁴	1,545 MW	Monday, January 05, 2015	8	5	1,350	1,255
NLH Power Purchases:	90 MW	Tuesday, January 06, 2015	-3	-6	1,550	1,450
Other Island Generation:	225 MW	Wednesday, January 07, 2015	-8	-6	1,525	1,425
Current St. John's Temperature:	-14 °C	Thursday, January 08, 2015	-4	-8	1,575	1,475
Current St. John's Windchill:	-23 °C	Friday, January 09, 2015	-10	-4	1,550	1,450
7-Day Island Peak Demand Forecast:	1,575 MW	Saturday, January 10, 2015	0	-3	1,425	1,330

Supply Notes for January 04, 2015³

- Notes: 1. Generation outages for running and corrective maintenance are included. These are not unusual for power system operations. They generally do not impact customer supply. The power system operators schedule outages to system equipment whenever possible to coincide with periods when customer demands are low and sufficient supply reserves are available. However, from time to time equipment outages are necessary and reserves may be impacted.
2. Due to the Island Interconnected System being isolated from the larger North American grid, when there is a sudden loss of large generating units some customer's load must be interrupted for short periods to bring generation output equal to customer demand. This automatic action of power system protection, referred to as underfrequency load shedding, is necessary to ensure the integrity and reliability of system equipment. Underfrequency events typically occur 5 to 8 times per year on the Island Interconnected System and the resultant customer load interruptions are generally less than 30 minutes.
3. As of 0800 Hours.
4. Gross output including station service at Holyrood (24.5 MW) and improved NLH hydraulic output due to water levels (35 MW).
5. Gross output from all Island sources (including Note 4).
6. Adjusted for CBP&P interruptible load (when applicable) and the impact of voltage reduction.

**Section 3
Island Peak Demand Information
Previous Day Actual Peak and Current Day Forecast Peak**

Sat, Jan 03, 2015	Actual Island Peak Demand ⁷	19:50	1,639 MW
Sun, Jan 04, 2015	Forecast Island Peak Demand		1,575 MW

- Notes: 7. Island Demand is supplied by NLH generation and purchases, plus generation owned and operated by Newfoundland Power and Corner Brook Pulp & Paper (Deer Lake Power, DLP).