

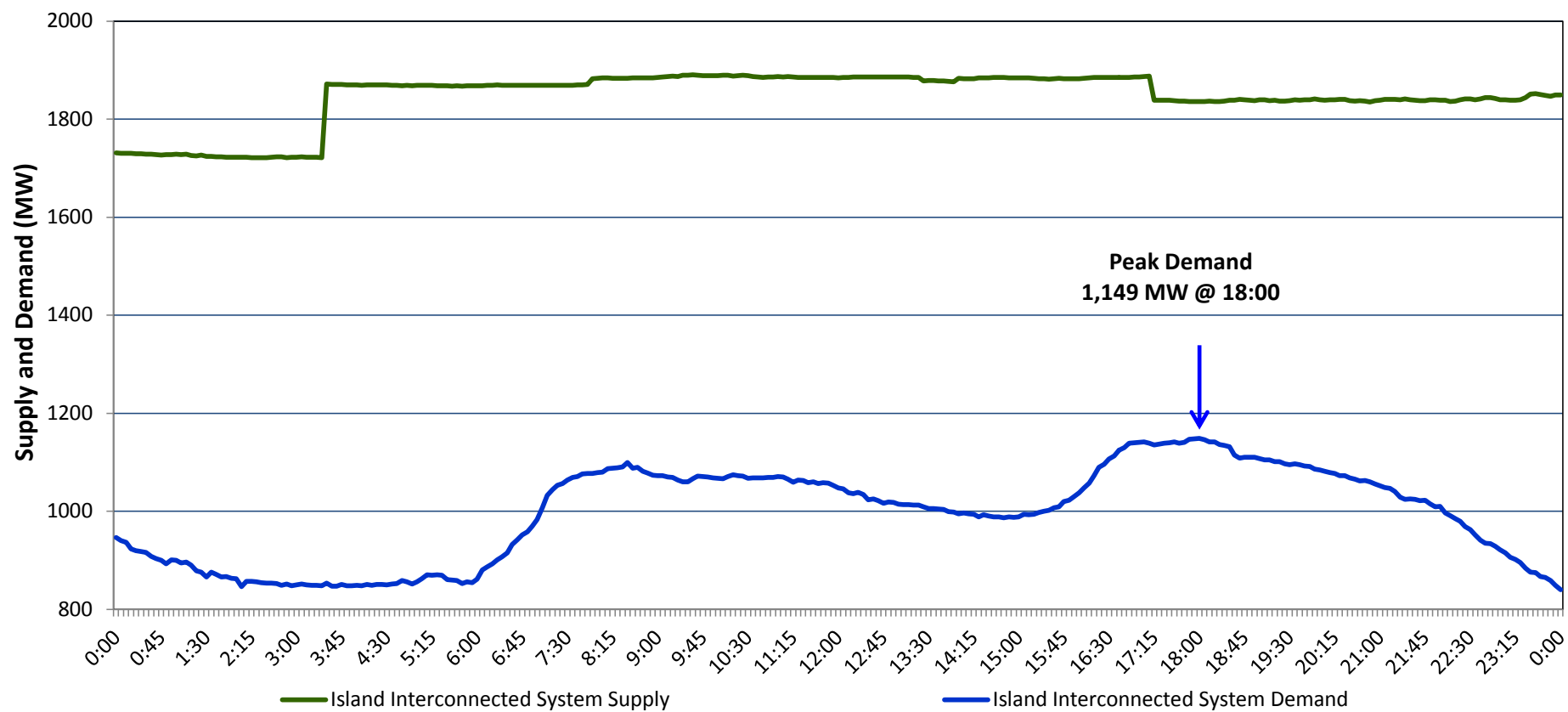
Newfoundland Labrador Hydro (NLH)

Supply and Demand Status Report Filed Monday, December 15, 2014

Section 1

Island Interconnected System Supply and Demand

Actual 24 Hour System Performance For Friday, December 12, 2014



Supply Notes for December 12, 2014^{1,2}

- A** As of 1000 hours, November 21, 2014, Nalcor Exploits Unit 4 unavailable due to a forced outage (30 MW). Net impact to system 4 MW (the excess water utilised by other Nalcor Grand Falls Units 5 to 8).
- B** At 0325 hours, December 12, 2014, Holyrood Unit 3 was returned to service (150 MW).
- C** At 1711 hours, December 12, 2014, the Hardwoods Gas Turbine Unit tripped offline. Unit unavailable due to a forced outage (50 MW).

Section 2

Island Interconnected Supply and Demand

Sat, Dec 13, 2014 Island System Outlook ³				Temperature (°C)		Island System Daily Peak Demand (MW)	
Seven-Day Forecast				Morning	Evening	Forecast	Adjusted ⁶
Available Island System Supply: ⁵	1,880	MW	Saturday, December 13, 2014	7	9	1,075	1,000
NLH: ⁴	1,660	MW	Sunday, December 14, 2014	7	8	1,025	955
Other Island Generation:	220	MW	Monday, December 15, 2014	6	3	1,250	1,175
			Tuesday, December 16, 2014	0	0	1,300	1,225
Current St. John's Temperature:	10	°C	Wednesday, December 17, 2014	0	-1	1,300	1,225
Current St. John's Windchill:	N/A	°C	Thursday, December 18, 2014	0	1	1,325	1,250
7-Day Island Peak Demand Forecast:	1,325	MW	Friday, December 19, 2014	4	4	1,250	1,175

Supply Notes for December 13, 2014³

- Notes:
1. Generation outages for running and corrective maintenance are included. These are not unusual for power system operations. They generally do not impact customer supply. The power system operators schedule outages to system equipment whenever possible to coincide with periods when customer demands are low and sufficient supply reserves are available. However, from time to time equipment outages are necessary and reserves may be impacted.
 2. Due to the Island Interconnected System being isolated from the larger North American grid, when there is a sudden loss of large generating units some customer's load must be interrupted for short periods to bring generation output equal to customer demand. This automatic action of power system protection, referred to as underfrequency load shedding, is necessary to ensure the integrity and reliability of system equipment. Underfrequency events typically occur 5 to 8 times per year on the Island Interconnected System and the resultant customer load interruptions are generally less than 30 minutes.
 3. As of 0800 Hours.
 4. Gross output including station service at Holyrood (24.5 MW) and improved NLH hydraulic output due to water levels (35 MW). Includes NLH Power Purchases.
 5. Gross output from all Island sources (including Note 4).
 6. Adjusted for CBP&P interruptible load (when applicable) and the impact of voltage reduction.

Section 3

Island Peak Demand Information

Previous Day Actual Peak and Current Day Forecast Peak

Fri, Dec 12, 2014	Actual Island Peak Demand ⁷	18:00	1,149 MW
Sat, Dec 13, 2014	Forecast Island Peak Demand		1,075 MW

Notes: 7. Island Demand is supplied by NLH generation and purchases, plus generation owned and operated by Newfoundland Power and Corner Brook Pulp & Paper (Deer Lake Power, DLP).