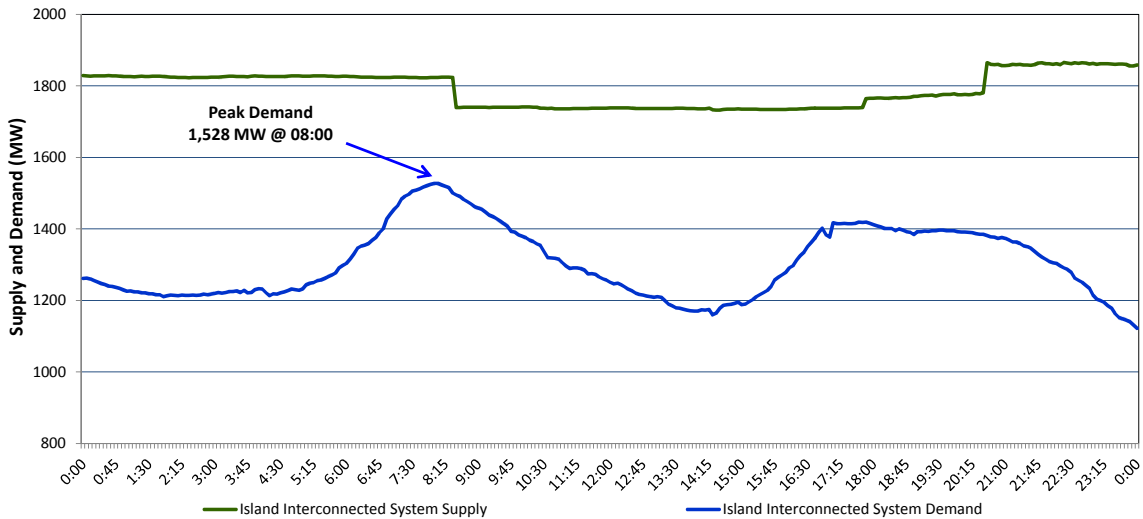


Newfoundland Labrador Hydro (NLH) Supply and Demand Status Report Filed Wednesday, December 10, 2014

Section 1 Island Interconnected System Supply and Demand Actual 24 Hour System Performance For Tuesday, December 09, 2014



Supply Notes for December 09, 2014^{1,2}

- A** As of 1000 hours, November 21, 2014, Nalcor Exploits Unit 4 unavailable due to a forced outage (30 MW). Net impact to system 4 MW (the excess water utilised by other Nalcor Grand Falls Units 5 to 8).
- B** At 0819 hours, December 09, 2014, the Upper Salmon Unit unavailable due to a forced outage. Unit restored to service at 2030 hours (84 MW).
- C** At 1748 hours, December 09, 2014, Stephenville Gas Turbine End A returned to service (25 MW).

Section 2 Island Interconnected Supply and Demand

Wed, Dec 10, 2014 Island System Outlook ³			Temperature (°C)		Island System Daily Peak Demand (MW)	
Seven-Day Forecast			Morning	Evening	Forecast	Adjusted ⁶
Available Island System Supply: ⁵	1,870	MW	-1	2	1,350	1,274
NLH: ⁴	1,670	MW	2	3	1,275	1,200
Other Island Generation:	200	MW	8	6	1,150	1,077
Current St. John's Temperature:	0	°C	7	6	1,200	1,126
Current St. John's Windchill:	N/A	°C	8	6	1,175	1,101
7-Day Island Peak Demand Forecast:	1,350	MW	7	3	1,325	1,250
			5	4	1,325	1,250

Supply Notes for December 10, 2014³

- Notes:
1. Generation outages for running and corrective maintenance are included. These are not unusual for power system operations. They generally do not impact customer supply. The power system operators schedule outages to system equipment whenever possible to coincide with periods when customer demands are low and sufficient supply reserves are available. However, from time to time equipment outages are necessary and reserves may be impacted.
 2. Due to the Island Interconnected System being isolated from the larger North American grid, when there is a sudden loss of large generating units some customer's load must be interrupted for short periods to bring generation output equal to customer demand. This automatic action of power system protection, referred to as underfrequency load shedding, is necessary to ensure the integrity and reliability of system equipment. Underfrequency events typically occur 5 to 8 times per year on the Island Interconnected System and the resultant customer load interruptions are generally less than 30 minutes.
 3. As of 0800 Hours.
 4. Gross output including station service at Holyrood (24.5 MW) and improved NLH hydraulic output due to water levels (35 MW). Includes NLH Power Purchases.
 5. Gross output from all Island sources (including Note 4).
 6. Adjusted for CBP&P interruptible load (when applicable) and the impact of voltage reduction.

Section 3 Island Peak Demand Information Previous Day Actual Peak and Current Day Forecast Peak

Tue, Dec 09, 2014	Actual Island Peak Demand ⁷	08:00	1,528 MW
Wed, Dec 10, 2014	Forecast Island Peak Demand		1,350 MW

Notes: 7. Island Demand is supplied by NLH generation and purchases, plus generation owned and operated by Newfoundland Power and Corner Brook Pulp & Paper (Deer Lake Power, DLP).