

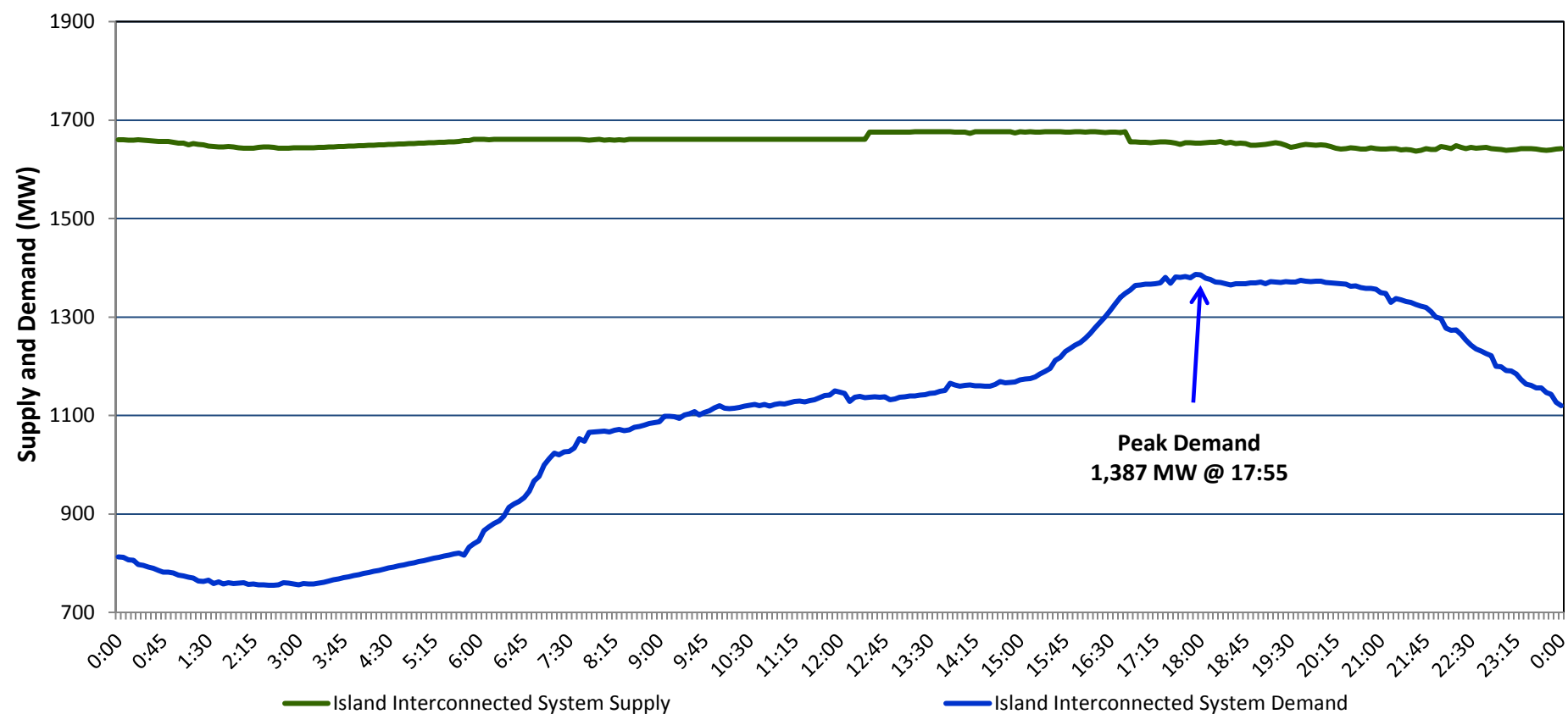
Newfoundland Labrador Hydro (NLH)

Supply and Demand Status Report Filed Wednesday, December 03, 2014

Section 1

Island Interconnected System Supply and Demand

Actual 24 Hour System Performance For Tuesday, December 02, 2014



Supply Notes for December 02, 2014^{1,2}

- A** As of 1000 hours, November 21, 2014, Nalcor Exploits Unit 4 unavailable due to a forced outage (30 MW).
- B** As of 1725 hours, November 27, 2014, Hardwoods Gas Turbine unavailable due to a forced outage (50 MW).

Section 2

Island Interconnected Supply and Demand

Wed, Dec 03, 2014 Island System Outlook ³			Seven-Day Forecast	Temperature (°C)		Island System Daily Peak Demand (MW)	
				Morning	Evening	Forecast	Adjusted ⁶
Available Island System Supply: ⁵	1,645	MW	Wednesday, December 03, 2014	-7	0	1,410	1,335
NLH: ⁴	1,435	MW	Thursday, December 04, 2014	9	2	1,210	1,135
Other Island Generation:	210	MW	Friday, December 05, 2014	-3	-5	1,360	1,285
			Saturday, December 06, 2014	-6	-2	1,375	1,300
Current St. John's Temperature:	-6	°C	Sunday, December 07, 2014	-3	-1	1,300	1,225
Current St. John's Windchill:	-9	°C	Monday, December 08, 2014	-8	-7	1,500	1,420
7-Day Island Peak Demand Forecast:	1,500	MW	Tuesday, December 09, 2014	-4	3	1,350	1,275

Supply Notes for December 03, 2014³

- Notes:
1. Generation outages for running and corrective maintenance are included. These are not unusual for power system operations. They generally do not impact customer supply. The power system operators schedule outages to system equipment whenever possible to coincide with periods when customer demands are low and sufficient supply reserves are available. However, from time to time equipment outages are necessary and reserves may be impacted.
 2. Due to the Island Interconnected System being isolated from the larger North American grid, when there is a sudden loss of large generating units some customer's load must be interrupted for short periods to bring generation output equal to customer demand. This automatic action of power system protection, referred to as underfrequency load shedding, is necessary to ensure the integrity and reliability of system equipment. Underfrequency events typically occur 5 to 8 times per year on the Island Interconnected System and the resultant customer load interruptions are generally less than 30 minutes.
 3. As of 0800 Hours.
 4. Gross output including station service at Holyrood (24.5 MW) and improved NLH hydraulic output due to water levels (35 MW). Includes NLH Power Purchases.
 5. Gross output from all Island sources (including Note 4).
 6. Adjusted for CBP&P interruptible load (when applicable) and the impact of voltage reduction.

Section 3

Island Peak Demand Information

Previous Day Actual Peak and Current Day Forecast Peak

Tue, Dec 02, 2014	Actual Island Peak Demand ⁷	17:55	1,387 MW
Wed, Dec 03, 2014	Forecast Island Peak Demand		1,410 MW

Notes: 7. Island Demand is supplied by NLH generation and purchases, plus generation owned and operated by Newfoundland Power and Corner Brook Pulp & Paper (Deer Lake Power, DLP).