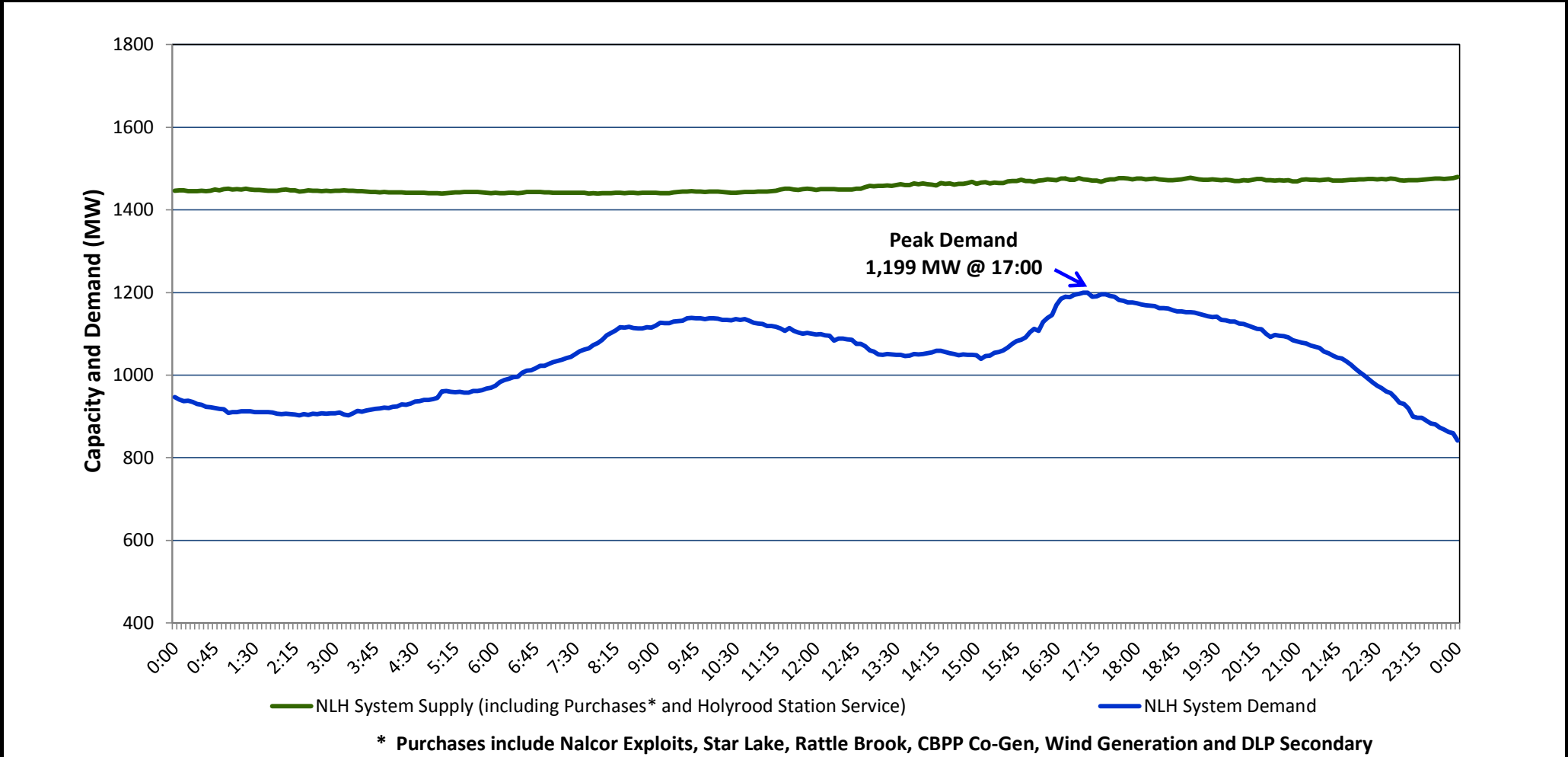


Newfoundland Labrador Hydro (NLH)
Supply and Demand Status Report Filed December 01, 2014

Section 1
NLH System Island Interconnected Supply and Demand
Actual 24 Hour System Performance For November 30, 2014



Supply Notes for November 30, 2014

→ As of 1000 hours, November 21, 2014, Nalcor Exploits Unit 4 unavailable due to a forced outage (30 MW).

→ As of 1725 hours, November 27, 2014, Hardwoods Gas Turbine unavailable due to a forced outage (50 MW).

→ At 1900 hours, November 30, 2014, Holyrood Unit 1 annual maintenance completed (170 MW).

→ At 1900 hours, November 30, 2014, Holyrood Unit 1 removed from service for economic dispatch (170 MW).

Section 2
NLH System Island Interconnected Supply and Demand

December 1, 2014 NLH System Outlook ³		Five-Day Forecast	Temperature (°C)		NLH System Demand (MW)	
			Morning	Evening	Morning	Evening
Available NLH System Supply: ⁴	1,500 MW	Monday, December 01, 2014	3	7	1,025	1,075
Current St. John's Temperature:	3 °C	Tuesday, December 02, 2014	8	-4	1,100	1,225
Current St. John's Windchill:	N/A °C	Wednesday, December 03, 2014	-6	-1	1,250	1,175
NLH System Peak Demand Forecast:	1,075 MW	Thursday, December 04, 2014	7	8	950	1,025
		Friday, December 05, 2014	0	-4	1,100	1,225

Supply Notes for December 01, 2014³

→ At 0000 hours, December 01, 2014, CBPP Capacity assistance available (60 MW).

Notes:

1. Generation outages for running and corrective maintenance are included. These are not unusual for power system operations. They generally do not impact customer supply. The power system operators schedule outages to system equipment whenever possible to coincide with periods when customer demands are low and sufficient supply reserves are available. However, from time to time equipment outages are necessary and reserves may be impacted.
2. Due to the Island Interconnected System being isolated from the larger North American grid, when there is a sudden loss of large generating units some customer's load must be interrupted for short periods to bring generation output equal to customer demand. This automatic action of power system protection, referred to as underfrequency load shedding, is necessary to ensure the integrity and reliability of system equipment. Underfrequency events typically occur 5 to 8 times per year on the Island Interconnected System and the resultant customer load interruptions are generally less than 30 minutes.
3. As of 0800 Hours.
4. Gross output including station service at Holyrood (24.5 MW) and improved hydraulic output due to water levels (35 MW). Includes Nalcor Exploits, Star Lake, Rattle Brook, CBPP Co-Gen. Excludes wind generation and DLP Secondary.

Section 3
Peak Demand Information
Previous Day Actual Peak and Current Day Forecast Peak

November 30, 2014	Actual NLH System Island Interconnected Peak Demand ¹	17:00	1,199 MW
December 1, 2014	Forecast NLH System Island Interconnected Peak Demand		1,075 MW
November 30, 2014	Actual Total Island Peak Demand ²	16:40	1,354 MW
December 1, 2014	Forecast Total Island Peak Demand		1,225 MW

Notes:

1. NLH System Island Interconnected is supplied by generation owned by NLH as well as NLH Power Purchases as detailed in Section 1 above.
2. Total Island System Demand is supplied by NLH generation and NLH Power Purchases, plus generation owned and operated by Newfoundland Power and Corner Brook Pulp & Paper to meet their respective supply needs.