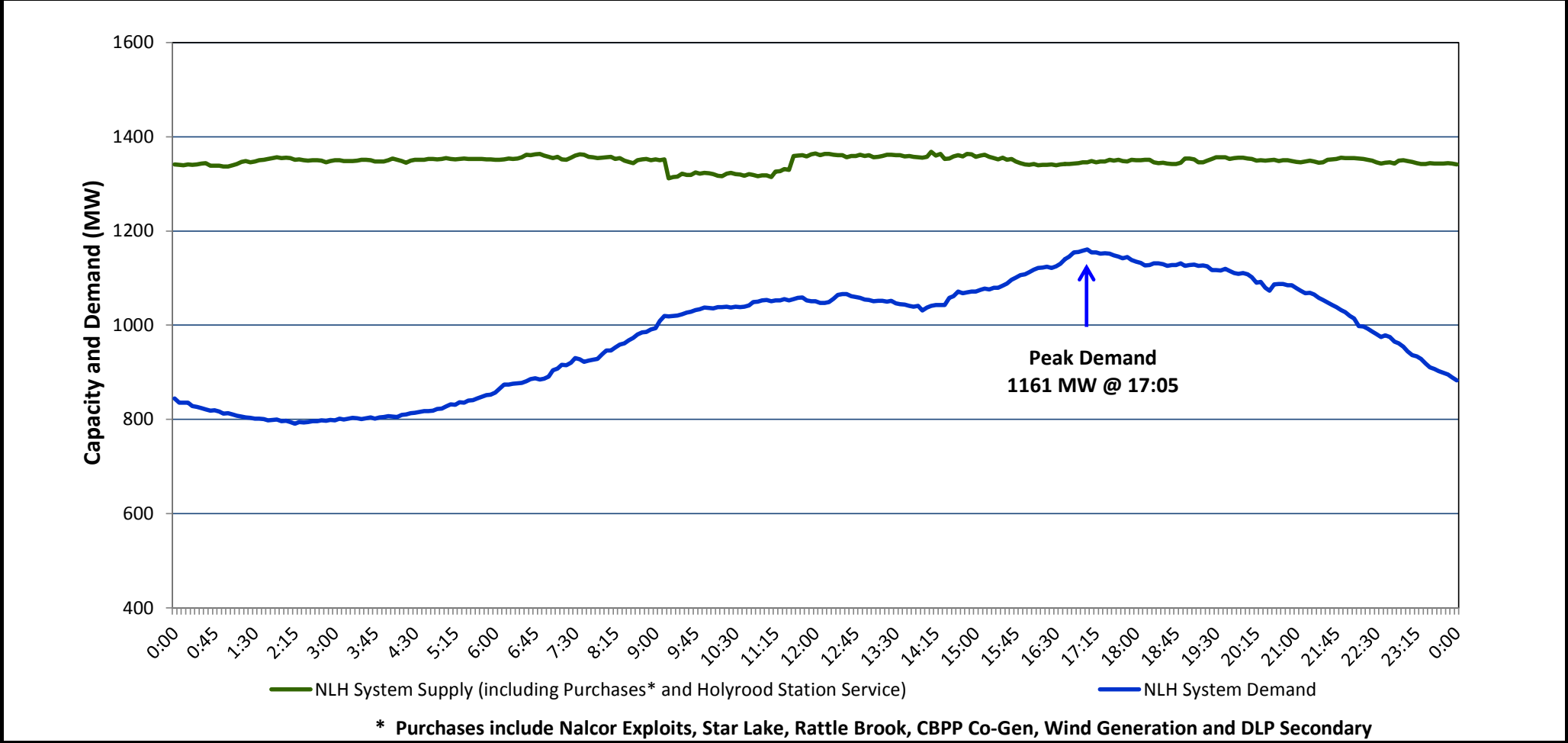


Newfoundland Labrador Hydro (NLH)
Supply and Demand Status Report Filed November 17, 2014

Section 1
NLH System Island Interconnected Supply and Demand
Actual 24 Hour System Performance For November 16, 2014



Supply Notes for November 16, 2014

- As of 1100 hours, July 21, 2014, Holyrood Unit 1 removed from service for annual maintenance (170 MW).
- As of 0826 hours, October 04, 2014, Stephenville Gas Turbine End B removed from service. Previously derated to 18 MW (25 MW).
- As of 0715 hours, November 04, 2014, Bay d'Espoir Unit 5 removed from service for annual maintenance (76.5 MW).
- As of 0715 hours, November 04, 2014, Bay d'Espoir Unit 6 removed from service for maintenance (76.5 MW).
- As of 1048 hours, November 10, 2014, Stephenville Gas Turbine End A unavailable due to a forced outage (25 MW).
- As of 2000 hours, November 15, 2014, CBPP Capacity assistance available (60 MW).
- At 1615 hours, November 16, 2014, Holyrood Unit 2 derating updated to 156 MW (170 MW).

Section 2
NLH System Island Interconnected Supply and Demand

November 17, 2014 NLH System Outlook ³			Five-Day Forecast		Temperature (°C)		NLH System Demand (MW)	
					Morning	Evening	Morning	Evening
Available NLH System Supply: ⁴	1,330	MW	Monday, November 17, 2014		-3	2	1,125	1,175
Current St. John's Temperature:	-2	°C	Tuesday, November 18, 2014		7	14	925	900
Current St. John's Windchill:	-6	°C	Wednesday, November 19, 2014		7	2	925	1,075
NLH System Peak Demand Forecast:	1,175	MW	Thursday, November 20, 2014		0	1	1,050	1,100
			Friday, November 21, 2014		2	4	1,000	1,000

Supply Notes for November 17, 2014³

→

- Notes:
1. Generation outages for running and corrective maintenance are included. These are not unusual for power system operations. They generally do not impact customer supply. The power system operators schedule outages to system equipment whenever possible to coincide with periods when customer demands are low and sufficient supply reserves are available. However, from time to time equipment outages are necessary and reserves may be impacted.
 2. Due to the Island Interconnected System being isolated from the larger North American grid, when there is a sudden loss of large generating units some customer's load must be interrupted for short periods to bring generation output equal to customer demand. This automatic action of power system protection, referred to as underfrequency load shedding, is necessary to ensure the integrity and reliability of system equipment. Underfrequency events typically occur 5 to 8 times per year on the Island Interconnected System and the resultant customer load interruptions are generally less than 30 minutes.
 3. As of 0800 Hours.
 4. Gross output including station service at Holyrood (24.5 MW) and improved hydraulic output due to water levels (35 MW). Includes Nalcor Exploits, Star Lake, Rattle Brook, CBPP Co-Gen. Excludes wind generation and DLP Secondary.

Section 3
Peak Demand Information
Previous Day Actual Peak and Current Day Forecast Peak

November 16, 2014	Actual NLH System Island Interconnected Peak Demand ¹	17:05	1,161 MW
November 17, 2014	Forecast NLH System Island Interconnected Peak Demand		1,175 MW
November 16, 2014	Actual Total Island Peak Demand ²	17:30	1,305 MW
November 17, 2014	Forecast Total Island Peak Demand		1,325 MW

- Notes:
1. NLH System Island Interconnected is supplied by generation owned by NLH as well as NLH Power Purchases as detailed in Section 1 above.
 2. Total Island System Demand is supplied by NLH generation and NLH Power Purchases, plus generation owned and operated by Newfoundland Power and Corner Brook Pulp & Paper to meet their respective supply needs.