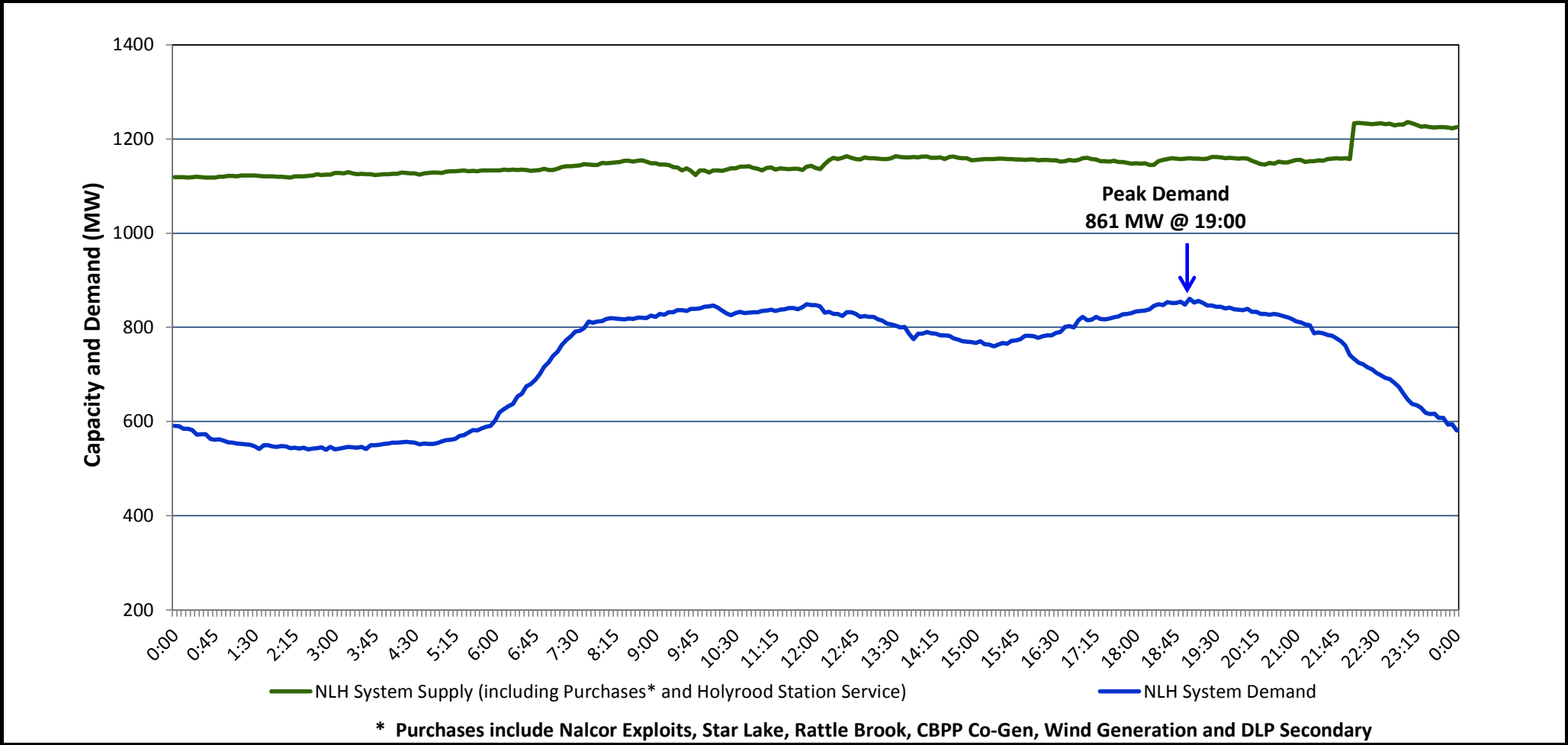


Newfoundland Labrador Hydro (NLH)
Supply and Demand Status Report Filed October 28, 2014

Section 1
NLH System Island Interconnected Supply and Demand
Actual 24 Hour System Performance For October 27, 2014



Supply Notes for October 27, 2014

→ As of 0858 hours, June 13, 2014, Stephenville Gas Turbine End A removed from service for annual maintenance (25 MW).
→ As of 1100 hours, July 21, 2014, Holyrood Unit 1 removed from service for annual maintenance (170 MW).
→ As of 0826 hours, October 04, 2014, Stephenville Gas Turbine End B removed from service. Previously derated to 18 MW (25 MW).
→ As of 0858 hours, October 05, 2014, Nalcor Exploits Unit 9 removed from service (30 MW).
→ As of 1104 hours, October 06, 2014, Hinds Lake Unit removed from service for annual maintenance (75 MW).
→ As of 2134 hours, October 24, 2014, Holyrood Unit 2 removed from service for economic dispatch, previously derated to 150 MW (170 MW).
→ At 2020 hours, October 27, 2014, Bay d'Espoir Unit 3 returned to service (76.5 MW).

Section 2
NLH System Island Interconnected Supply and Demand

October 28, 2014	NLH System Outlook ³	Five-Day Forecast	Temperature (°C)		NLH System Demand (MW)	
			Morning	Evening	Morning	Evening
Available NLH System Supply: ⁴	1,190 MW	Tuesday, October 28, 2014	7	8	875	950
Current St. John's Temperature:	8 °C	Wednesday, October 29, 2014	7	5	875	950
Current St. John's Windchill:	N/A °C	Thursday, October 30, 2014	8	13	725	800
NLH System Peak Demand Forecast:	950 MW	Friday, October 31, 2014	6	6	900	850
		Saturday, November 01, 2014	5	7	850	900

Supply Notes for October 28, 2014³

→

Notes:

1. Generation outages for running and corrective maintenance are included. These are not unusual for power system operations. They generally do not impact customer supply. The power system operators schedule outages to system equipment whenever possible to coincide with periods when customer demands are low and sufficient supply reserves are available. However, from time to time equipment outages are necessary and reserves may be impacted.
2. Due to the Island Interconnected System being isolated from the larger North American grid, when there is a sudden loss of large generating units some customer's load must be interrupted for short periods to bring generation output equal to customer demand. This automatic action of power system protection, referred to as underfrequency load shedding, is necessary to ensure the integrity and reliability of system equipment. Underfrequency events typically occur 5 to 8 times per year on the Island Interconnected System and the resultant customer load interruptions are generally less than 30 minutes.
3. As of 0800 Hours.
4. Gross output including station service at Holyrood (24.5 MW) and improved hydraulic output due to water levels (35 MW). Includes Nalcor Exploits, Star Lake, Rattle Brook, CBPP Co-Gen. Excludes wind generation and DLP Secondary.

Section 3
Peak Demand Information
Previous Day Actual Peak and Current Day Forecast Peak

October 27, 2014	Actual NLH System Island Interconnected Peak Demand ¹	19:00	861 MW
October 28, 2014	Forecast NLH System Island Interconnected Peak Demand		950 MW
October 27, 2014	Actual Total Island Peak Demand ²	11:40	964 MW
October 28, 2014	Forecast Total Island Peak Demand		1,075 MW

Notes:

1. NLH System Island Interconnected is supplied by generation owned by NLH as well as NLH Power Purchases as detailed in Section 1 above.
2. Total Island System Demand is supplied by NLH generation and NLH Power Purchases, plus generation owned and operated by Newfoundland Power and Corner Brook Pulp & Paper to meet their respective supply needs.