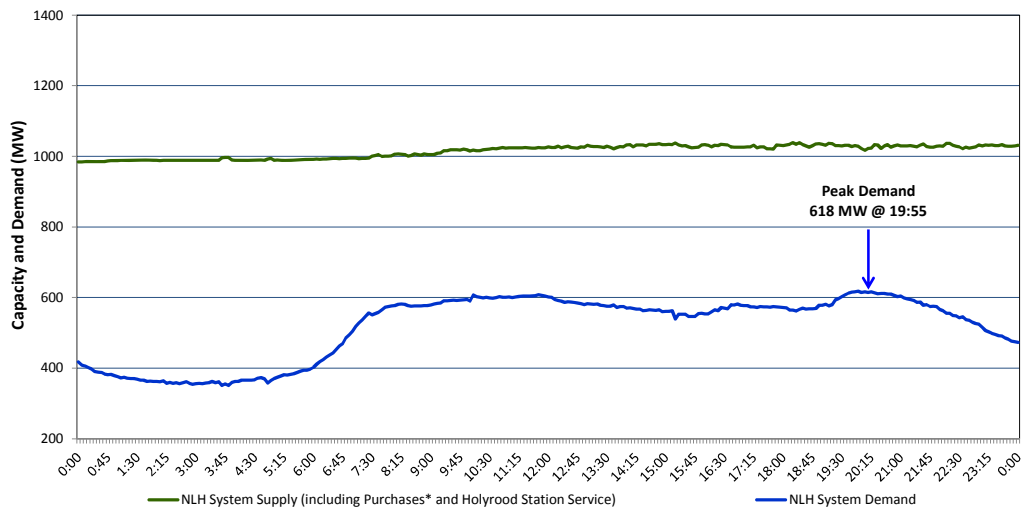


Newfoundland Labrador Hydro (NLH) Supply and Demand Status Report Filed September 22, 2014

Section 1

NLH System Island Interconnected Supply and Demand Actual 24 Hour System Performance For September 19, 2014



* Purchases include Nalcor Exploits, Star Lake, Rattle Brook, CBPP Co-Gen, Wind Generation and DLP Secondary

Supply Notes for September 19, 2014

- As of 0858 hours, June 13, 2014, Stephenville Gas Turbine End A removed from service for annual maintenance (25 MW).
- As of 1100 hours, July 21, 2014, Holyrood Unit 1 removed from service for annual maintenance (170 MW).
- As of 0347 hours, July 25, 2014, Hardwoods Gas Turbine unavailable due to a forced outage (50 MW).
- As of 1738 hours, August 27, 2014, Cat Arm Unit 1 derated to 53 MW (67 MW).
- As of 1216 hours, September 14, 2014, Bay d'Espoir Unit 7 removed from service for annual maintenance, derated to 100 MW (154 MW).
- As of 1523 hours, September 18, 2014, Holyrood Unit 2 derated to 110 MW (results from load testing) (170 MW).
- As of 2229 hours, September 18, 2014, Holyrood Unit 3 removed from service for planned maintenance, derating of 100 MW (150 MW).
- At 1909 hours, September 19, 2014, Paradise River Unit returned to service (8 MW).
- At 1520 hours, September 19, 2014, Stephenville Gas Turbine End B derated to 18 MW (25 MW).

Section 2

NLH System Island Interconnected Supply and Demand

September 20, 2014 NLH System Outlook ³		Five-Day Forecast	Temperature (°C)		NLH System Demand (MW)	
			Morning	Evening	Morning	Evening
Available NLH System Supply: ⁴	1,000 MW	Saturday, September 20, 2014	6	13	650	650
Current St. John's Temperature:	9 °C	Sunday, September 21, 2014	14	18	600	600
Current St. John's Windchill:	N/A °C	Monday, September 22, 2014	17	20	600	625
NLH System Peak Demand Forecast:	650 MW	Tuesday, September 23, 2014	16	20	575	600
		Wednesday, September 24, 2014	6	9	725	675

Supply Notes for September 20, 2014³

→

- Notes:
1. Generation outages for running and corrective maintenance are included. These are not unusual for power system operations. They generally do not impact customer supply. The power system operators schedule outages to system equipment whenever possible to coincide with periods when customer demands are low and sufficient supply reserves are available. However, from time to time equipment outages are necessary and reserves may be impacted.
 2. Due to the Island Interconnected System being isolated from the larger North American grid, when there is a sudden loss of large generating units some customer's load must be interrupted for short periods to bring generation output equal to customer demand. This automatic action of power system protection, referred to as underfrequency load shedding, is necessary to ensure the integrity and reliability of system equipment. Underfrequency events typically occur 5 to 8 times per year on the Island Interconnected System and the resultant customer load interruptions are generally less than 30 minutes.
 3. As of 0800 Hours.
 4. Gross output including station service at Holyrood (24.5 MW) and improved hydraulic output due to water levels (35 MW). Includes Nalcor Exploits, Star Lake, Rattle Brook, CBPP Co-Gen. Excludes wind generation and DLP Secondary.

Section 3

Peak Demand Information Previous Day Actual Peak and Current Day Forecast Peak

September 19, 2014	Actual NLH System Island Interconnected Peak Demand ¹	19:55	618 MW
September 20, 2014	Forecast NLH System Island Interconnected Peak Demand		650 MW
September 19, 2014	Actual Total Island Peak Demand ²	19:55	742 MW
September 20, 2014	Forecast Total Island Peak Demand		800 MW

- Notes:
1. NLH System Island Interconnected is supplied by generation owned by NLH as well as NLH Power Purchases as detailed in Section 1 above.
 2. Total Island System Demand is supplied by NLH generation and NLH Power Purchases, plus generation owned and operated by Newfoundland Power and Corner Brook Pulp & Paper to meet their respective supply needs.