

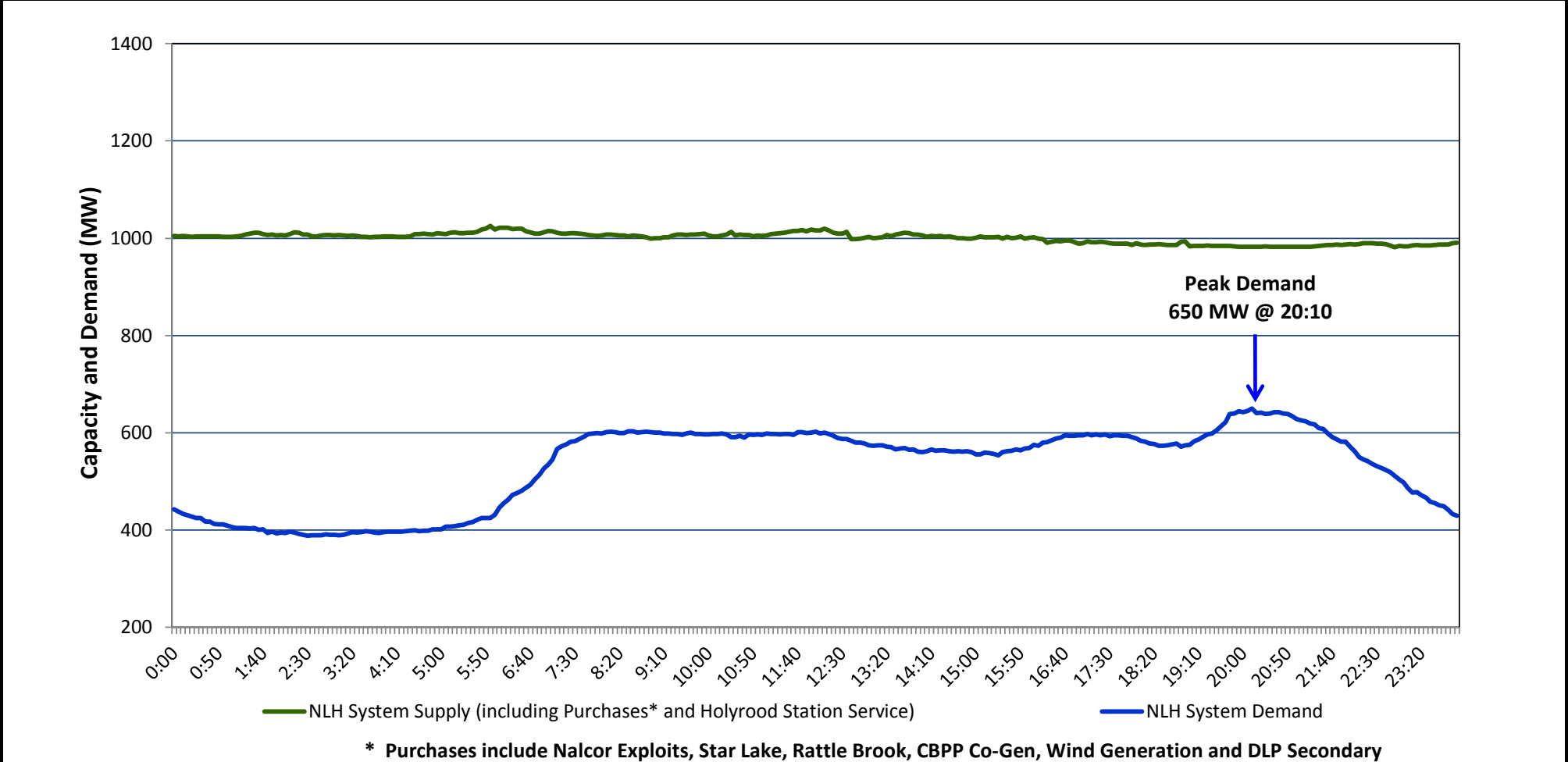
Newfoundland Labrador Hydro (NLH)

Supply and Demand Status Report Filed September 17, 2014

Section 1

NLH System Island Interconnected Supply and Demand

Actual 24 Hour System Performance For September 16, 2014



Supply Notes for September 16, 2014

→ As of 0800 hours, May 21, 2014, Holyrood Unit 2 removed from service for annual maintenance (165 MW).

→ As of 0858 hours, June 13, 2014, Stephenville Gas Turbine End A removed from service for annual maintenance (25 MW).

→ As of 1100 hours, July 21, 2014, Holyrood Unit 1 removed from service for annual maintenance (170 MW).

→ As of 0347 hours, July 25, 2014, Hardwoods Gas Turbine unavailable due to a forced outage (50 MW).

→ As of 1814 hours, August 22, 2014, Stephenville Gas Turbine End B derated to 16 MW (25 MW).

→ As of 1738 hours, August 27, 2014, Cat Arm Unit 1 derated to 53 MW (67 MW).

→ As of 0227 hours, September 01, 2014, Nalcor Grand Falls Unit 9 removed from service for annual maintenance (30 MW). Net impact to system 5 MW (the excess water utilised by other Nalcor Grand Falls Units 5 to 8).

→ As of 1216 hours, September 14, 2014, Bay d'Espoir Unit 7 removed from service for annual maintenance, derated to 100 MW(154 MW).

→ As of 1604 hours, September 14, 2014, Paradise River Unit removed from service for annual maintenance (8 MW).

→ At 1208 hours, September 16, 2014, HRD Unit 3 derating adjusted to 100 MW (results from load testing) (150 MW).

Section 2						
NLH System Island Interconnected Supply and Demand						
September 17, 2014 NLH System Outlook ³		Five-Day Forecast	Temperature (°C)		NLH System Demand (MW)	
			Morning	Evening	Morning	Evening
Available NLH System Supply: ⁴	975 MW	Wednesday, September 17, 2014	10	17	600	625
Current St. John's Temperature:	9 °C	Thursday, September 18, 2014	8	14	650	650
Current St. John's Windchill:	N/A °C	Friday, September 19, 2014	13	7	650	725
NLH System Peak Demand Forecast:	625 MW	Saturday, September 20, 2014	6	14	625	600
		Sunday, September 21, 2014	13	16	575	575

Supply Notes for September 17, 2014³

→

Notes:

- Generation outages for running and corrective maintenance are included. These are not unusual for power system operations. They generally do not impact customer supply. The power system operators schedule outages to system equipment whenever possible to coincide with periods when customer demands are low and sufficient supply reserves are available. However, from time to time equipment outages are necessary and reserves may be impacted.
- Due to the Island Interconnected System being isolated from the larger North American grid, when there is a sudden loss of large generating units some customer's load must be interrupted for short periods to bring generation output equal to customer demand. This automatic action of power system protection, referred to as underfrequency load shedding, is necessary to ensure the integrity and reliability of system equipment. Underfrequency events typically occur 5 to 8 times per year on the Island Interconnected System and the resultant customer load interruptions are generally less than 30 minutes.
- As of 0800 Hours.
- Gross output including station service at Holyrood (24.5 MW) and improved hydraulic output due to water levels (35 MW). Includes Nalcor Exploits, Star Lake, Rattle Brook, CBPP Co-Gen. Excludes wind generation and DLP Secondary.

Section 3			
Peak Demand Information			
Previous Day Actual Peak and Current Day Forecast Peak			
September 16, 2014	Actual NLH System Island Interconnected Peak Demand ¹	20:10	650 MW
September 17, 2014	Forecast NLH System Island Interconnected Peak Demand		625 MW
September 16, 2014	Actual Total Island Peak Demand ²	19:55	751 MW
September 17, 2014	Forecast Total Island Peak Demand		MW
Notes: 1. NLH System Island Interconnected is supplied by generation owned by NLH as well as NLH Power Purchases as detailed in Section 1 above.			
2. Total Island System Demand is supplied by NLH generation and NLH Power Purchases, plus generation owned and operated by Newfoundland Power and Corner Brook Pulp & Paper to meet their respective supply needs.			