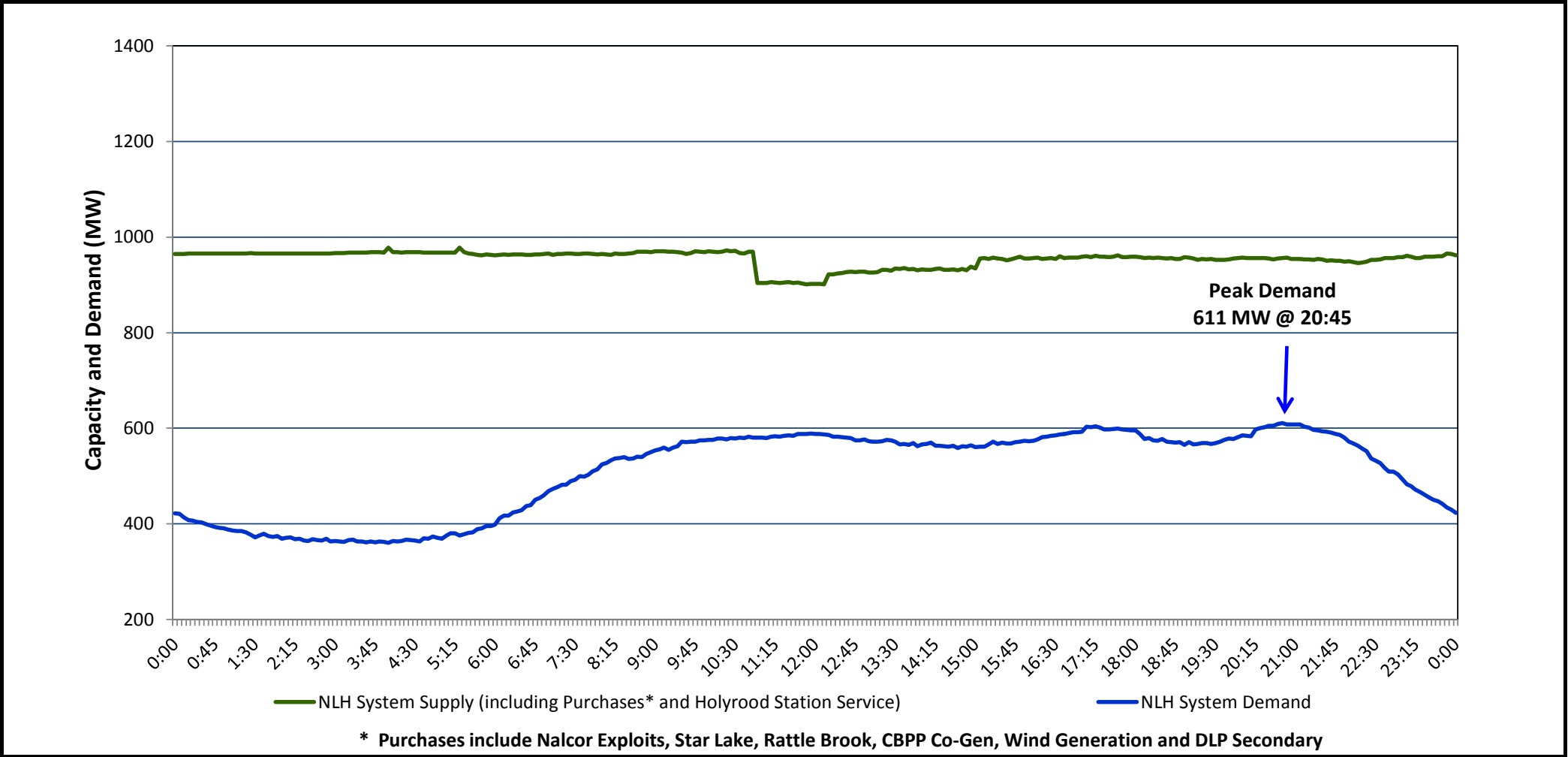


Newfoundland Labrador Hydro (NLH)
Supply and Demand Status Report Filed August 26, 2014

Section 1
NLH System Island Interconnected Supply and Demand
Actual 24 Hour System Performance For August 25, 2014



Supply Notes for August 25, 2014

→ As of 0800 hours, May 21, 2014, Holyrood Unit 2 removed from service for annual maintenance (165 MW).

→ As of 1554 hours, May 24, 2014, Bay d'Espoir Unit 3 removed from service for annual maintenance (76.5 MW).

→ As of 0858 hours, June 13, 2014, Stephenville Gas Turbine End A removed from service for annual maintenance (25 MW).

→ As of 1100 hours, July 21, 2014, Holyrood Unit 1 removed from service for annual maintenance (170 MW).

→ As of 0347 hours, July 25, 2014, Hardwoods Gas Turbine unavailable due to a forced outage (50 MW).

→ As of 0908 hours, August 12, 2014, the remainder of Stephenville Gas Turbine Unit removed from service for annual maintenance (50 MW).

→ As of 0629 hours, August 18, 2014, Cat Arm Unit 2 removed from service for annual maintenance (67 MW).

→ As of 1000 hours, August 20, 2014, HRD Unit 3 derating adjusted from 100 to 120 MW (Air heater and condenser vacuum problem) (150 MW).

→ As of 0900 hours, August 21, 2014, Bay D'Espoir Unit 7 derating adjusted from 120 to 100 MW (Vibration problem) (154 MW).

→ As of 1814 hours, August 22, 2014, Stephenville Gas Turbine End B derated to 16 MW (25 MW).

→ As of 0740 hours, August 24, 2014, Bay D'Espoir Unit 3 was put on-line for commissioning but is not available for service (76.5 MW).

→ At 1051 hours, August 25, 2014, Cat Arm Unit 1 removed from service (derated to 53 MW from 67 MW).

Section 2 NLH System Island Interconnected Supply and Demand							
August 26, 2014 NLH System Outlook ³		Five-Day Forecast	Temperature (°C)		NLH System Demand (MW)		
			Morning	Evening	Morning	Evening	
Available NLH System Supply: ⁴	920 MW	Tuesday, August 26, 2014	12	16	625	650	
Current St. John's Temperature:	12 °C	Wednesday, August 27, 2014	16	21	600	650	
Current St. John's Windchill:	N/A °C	Thursday, August 28, 2014	17	16	600	625	
NLH System Peak Demand Forecast:	650 MW	Friday, August 29, 2014	16	11	625	650	
		Saturday, August 30, 2014	13	19	575	550	

Supply Notes for August 26, 2014³

→

Notes:

1. Generation outages for running and corrective maintenance are included. These are not unusual for power system operations. They generally do not impact customer supply. The power system operators schedule outages to system equipment whenever possible to coincide with periods when customer demands are low and sufficient supply reserves are available. However, from time to time equipment outages are necessary and reserves may be impacted.
2. Due to the Island Interconnected System being isolated from the larger North American grid, when there is a sudden loss of large generating units some customer's load must be interrupted for short periods to bring generation output equal to customer demand. This automatic action of power system protection, referred to as underfrequency load shedding, is necessary to ensure the integrity and reliability of system equipment. Underfrequency events typically occur 5 to 8 times per year on the Island Interconnected System and the resultant customer load interruptions are generally less than 30 minutes.
3. As of 0800 Hours.
4. Gross output including station service at Holyrood (24.5 MW) and improved hydraulic output due to water levels (35 MW). Includes Nalcor Exploits, Star Lake, Rattle Brook, CBPP Co-Gen. Excludes wind generation and DLP Secondary.

Section 3 Peak Demand Information Previous Day Actual Peak and Current Day Forecast Peak			
August 25, 2014	Actual NLH System Island Interconnected Peak Demand ¹	20:45	611 MW
August 26, 2014	Forecast NLH System Island Interconnected Peak Demand		650 MW
August 25, 2014	Actual Total Island Peak Demand ²	12:05	729 MW
August 26, 2014	Forecast Total Island Peak Demand		750 MW
Notes: 1. NLH System Island Interconnected is supplied by generation owned by NLH as well as NLH Power Purchases as detailed in Section 1 above. 2. Total Island System Demand is supplied by NLH generation and NLH Power Purchases, plus generation owned and operated by Newfoundland Power and Corner Brook Pulp & Paper to meet their respective supply needs.			