

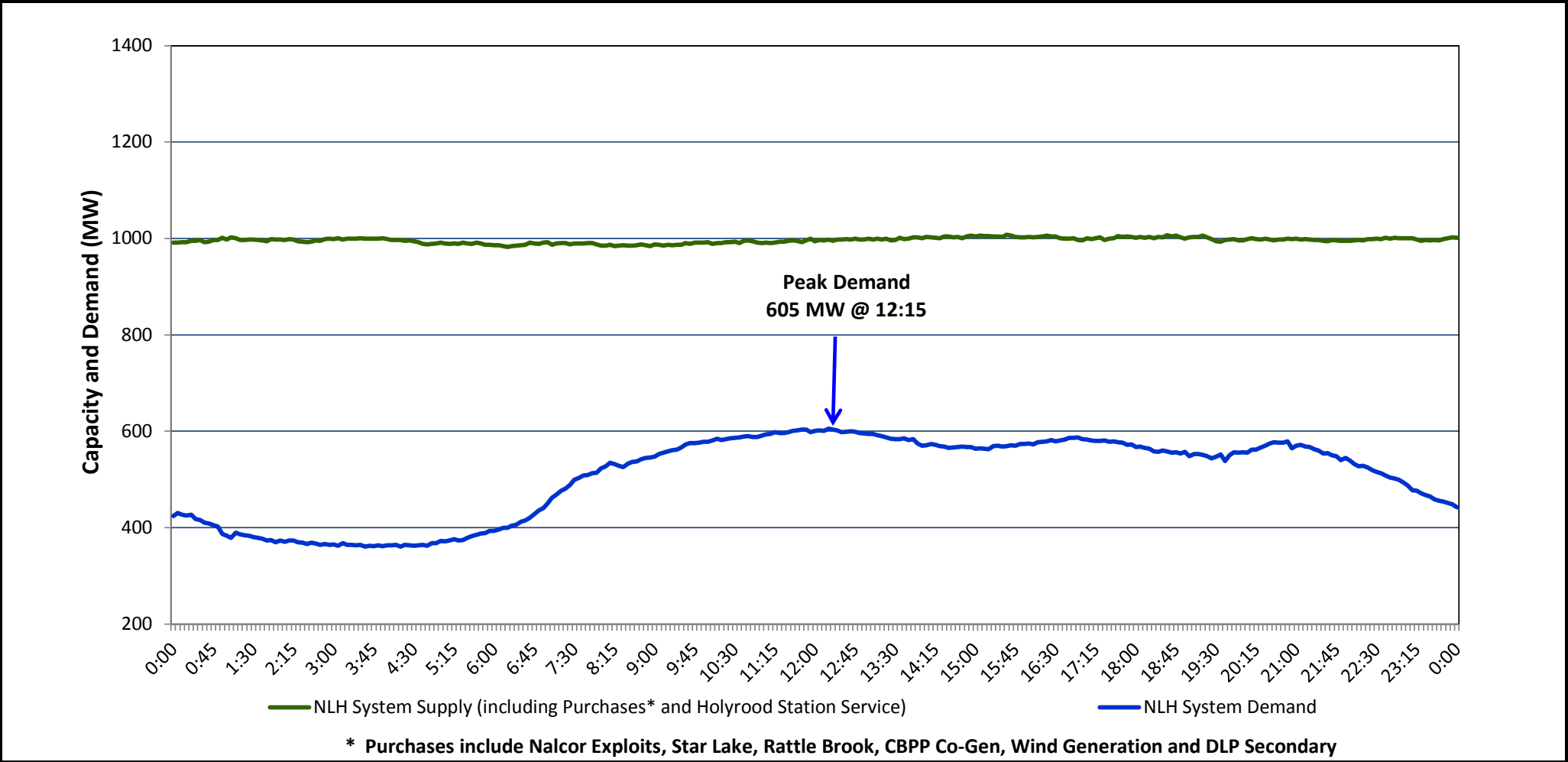
Newfoundland Labrador Hydro (NLH)

Supply and Demand Status Report Filed August 25, 2014 (Revised - August 26, 2014)

Section 1

NLH System Island Interconnected Supply and Demand

Actual 24 Hour System Performance For August 22, 2014



Supply Notes for August 22, 2014

→ As of 0800 hours, May 21, 2014, Holyrood Unit 2 removed from service for annual maintenance (165 MW).

→ As of 1554 hours, May 24, 2014, Bay d'Espoir Unit 3 removed from service for annual maintenance (76.5 MW).

→ As of 0858 hours, June 13, 2014, Stephenville Gas Turbine End A removed from service for annual maintenance (25 MW).

→ As of 1139 hours, July 09, 2014, Cat Arm Unit 1 derated to 53 MW (67 MW).

→ As of 1100 hours, July 21, 2014, Holyrood Unit 1 removed from service for annual maintenance (170 MW).

→ As of 0347 hours, July 25, 2014, Hardwoods Gas Turbine unavailable due to a forced outage (50 MW).

→ As of 0629 hours, August 18, 2014, Cat Arm Unit 2 removed from service for annual maintenance (67 MW).

→ As of 1000 hours, August 20, 2014, HRD Unit 3 derating adjusted from 100 to 120 MW (Air heater and condenser vacuum problem) (150 MW).

→ As of 0900 hours, August 21, 2014, Bay D'Espoir Unit 7 derating adjusted from 120 to 100 MW (Vibration problem) (154 MW).

→ **At 1814 hours, August 22, 2014, Stephenville Gas Turbine End B returned to service from annual maintenance - rated at 16 MW (25 MW).**

Section 2

NLH System Island Interconnected Supply and Demand

August 23, 2014 NLH System Outlook ³			Five-Day Forecast		Temperature (°C)		NLH System Demand (MW)	
					Morning	Evening	Morning	Evening
Available NLH System Supply: ⁴	1,000	MW	Saturday, August 23, 2014		12	14	600	600
Current St. John's Temperature:	12	°C	Sunday, August 24, 2014		13	14	600	600
Current St. John's Windchill:	N/A	°C	Monday, August 25, 2014		13	21	625	650
NLH System Peak Demand Forecast:	600	MW	Tuesday, August 26, 2014		11	16	600	625
			Wednesday, August 27, 2014		16	17	600	625

Supply Notes for August 23, 2014³

→

Notes:

1. Generation outages for running and corrective maintenance are included. These are not unusual for power system operations. They generally do not impact customer supply. The power system operators schedule outages to system equipment whenever possible to coincide with periods when customer demands are low and sufficient supply reserves are available. However, from time to time equipment outages are necessary and reserves may be impacted.
2. Due to the Island Interconnected System being isolated from the larger North American grid, when there is a sudden loss of large generating units some customer's load must be interrupted for short periods to bring generation output equal to customer demand. This automatic action of power system protection, referred to as underfrequency load shedding, is necessary to ensure the integrity and reliability of system equipment. Underfrequency events typically occur 5 to 8 times per year on the Island Interconnected System and the resultant customer load interruptions are generally less than 30 minutes.
3. As of 0800 Hours.
4. Gross output including station service at Holyrood (24.5 MW) and improved hydraulic output due to water levels (35 MW). Includes Nalcor Exploits, Star Lake, Rattle Brook, CBPP Co-Gen. Excludes wind generation and DLP Secondary.

Section 3

Peak Demand Information

Previous Day Actual Peak and Current Day Forecast Peak

August 22, 2014	Actual NLH System Island Interconnected Peak Demand ¹	12:15	605 MW
August 23, 2014	Forecast NLH System Island Interconnected Peak Demand		600 MW
August 22, 2014	Actual Total Island Peak Demand ²	12:00	748 MW
August 23, 2014	Forecast Total Island Peak Demand		725 MW

Notes:

1. NLH System Island Interconnected is supplied by generation owned by NLH as well as NLH Power Purchases as detailed in Section 1 above.
2. Total Island System Demand is supplied by NLH generation and NLH Power Purchases, plus generation owned and operated by Newfoundland Power and Corner Brook Pulp & Paper to meet their respective supply needs.