

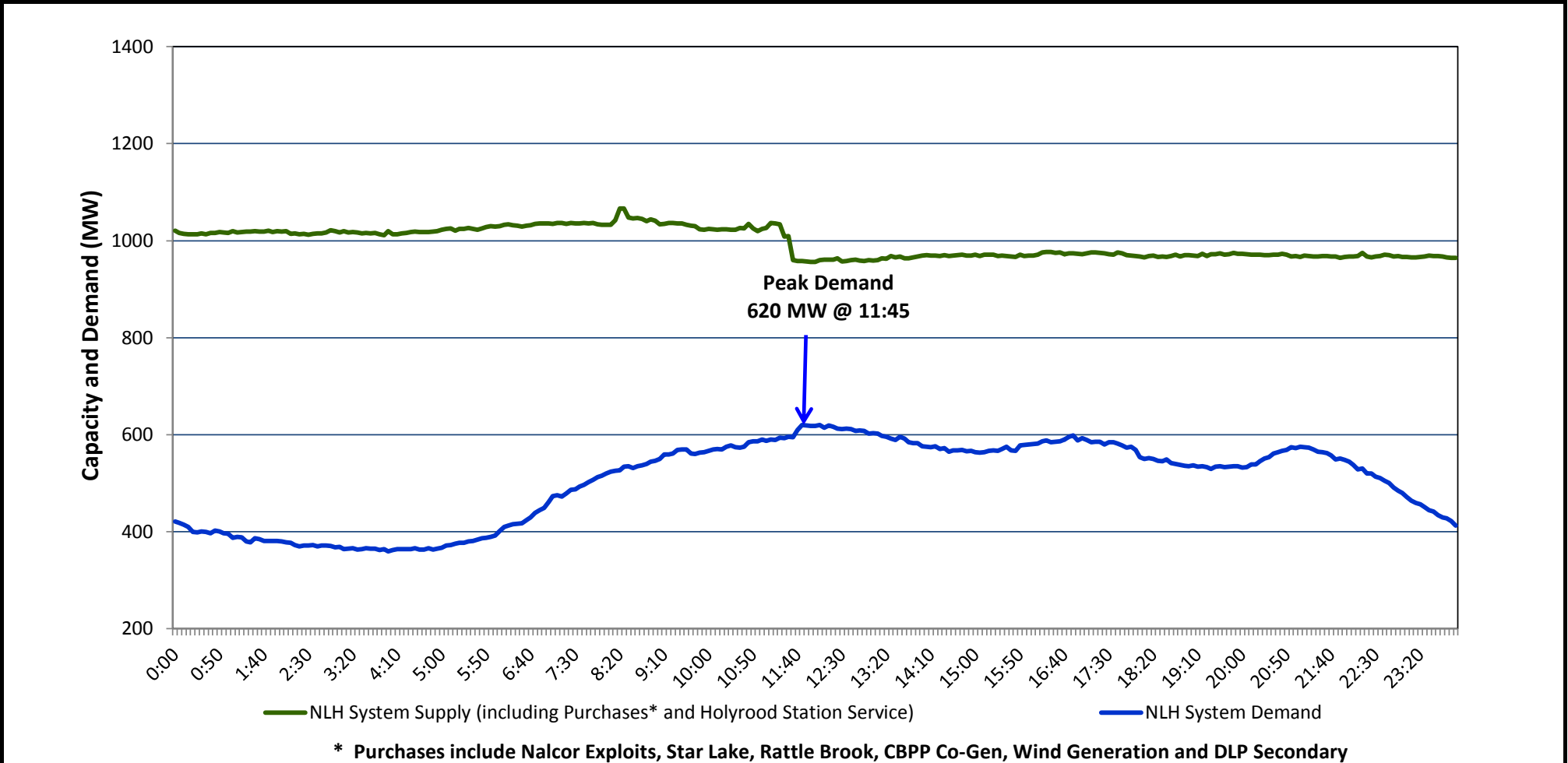
Newfoundland Labrador Hydro (NLH)

Supply and Demand Status Report Filed August 20, 2014

Section 1

NLH System Island Interconnected Supply and Demand

Actual 24 Hour System Performance For August 19, 2014



Supply Notes for August 19, 2014

→ As of 0800 hours, May 21, 2014, Holyrood Unit 2 removed from service for annual maintenance (165 MW).

→ As of 1554 hours, May 24, 2014, Bay d'Espoir Unit 3 removed from service for annual maintenance (76.5 MW).

→ As of 0858 hours, June 13, 2014, Stephenville Gas Turbine End A removed from service for annual maintenance (25 MW).

→ As of 1139 hours, July 09, 2014, Cat Arm Unit 1 derated to 53 MW (67 MW).

→ As of 1100 hours, July 21, 2014, Holyrood Unit 1 removed from service for annual maintenance (170 MW).

→ As of 0347 hours, July 25, 2014, Hardwoods Gas Turbine unavailable due to a forced outage (50 MW).

→ As of 1124 hours, August 02, 2014, Bay d'Espoir Unit 7 derated to 120 MW (154 MW).

→ As of 0908 hours, August 12, 2014, the remainder of Stephenville Gas Turbine Unit removed from service for annual maintenance (50 MW).

→ As of 0629 hours, August 18, 2014, Cat Arm Unit 2 removed from service for annual maintenance (67 MW).

→ At 1135 hours, August 19, 2014, HRD Unit 3 derated to 100 MW(Air heater and condenser vacuum problem). (150 MW)

Section 2						
NLH System Island Interconnected Supply and Demand						
August 20, 2014 NLH System Outlook ³			Five-Day Forecast		Temperature (°C)	
					Morning	Evening
					NLH System Demand (MW)	
					Morning	Evening
Available NLH System Supply: ⁴	965	MW	Wednesday, August 20, 2014		17	17
Current St. John's Temperature:	17	°C	Thursday, August 21, 2014		16	18
Current St. John's Windchill:	N/A	°C	Friday, August 22, 2014		15	15
NLH System Peak Demand Forecast:	625	MW	Saturday, August 23, 2014		13	15
			Sunday, August 24, 2014		13	15
					600	550

Supply Notes for August 20, 2014³

→

Notes:

1. Generation outages for running and corrective maintenance are included. These are not unusual for power system operations. They generally do not impact customer supply. The power system operators schedule outages to system equipment whenever possible to coincide with periods when customer demands are low and sufficient supply reserves are available. However, from time to time equipment outages are necessary and reserves may be impacted.
2. Due to the Island Interconnected System being isolated from the larger North American grid, when there is a sudden loss of large generating units some customer's load must be interrupted for short periods to bring generation output equal to customer demand. This automatic action of power system protection, referred to as underfrequency load shedding, is necessary to ensure the integrity and reliability of system equipment. Underfrequency events typically occur 5 to 8 times per year on the Island Interconnected System and the resultant customer load interruptions are generally less than 30 minutes.
3. As of 0800 Hours.
4. Gross output including station service at Holyrood (24.5 MW) and improved hydraulic output due to water levels (35 MW). Includes Nalcor Exploits, Star Lake, Rattle Brook, CBPP Co-Gen. Excludes wind generation and DLP Secondary.

Section 3			
Peak Demand Information			
Previous Day Actual Peak and Current Day Forecast Peak			
August 19, 2014	Actual NLH System Island Interconnected Peak Demand ¹	11:45	620 MW
August 20, 2014	Forecast NLH System Island Interconnected Peak Demand		625 MW
August 19, 2014	Actual Total Island Peak Demand ²	11:55	738 MW
August 20, 2014	Forecast Total Island Peak Demand		750 MW
Notes: 1. NLH System Island Interconnected is supplied by generation owned by NLH as well as NLH Power Purchases as detailed in Section 1 above.			
2. Total Island System Demand is supplied by NLH generation and NLH Power Purchases, plus generation owned and operated by Newfoundland Power and Corner Brook Pulp & Paper to meet their respective supply needs.			