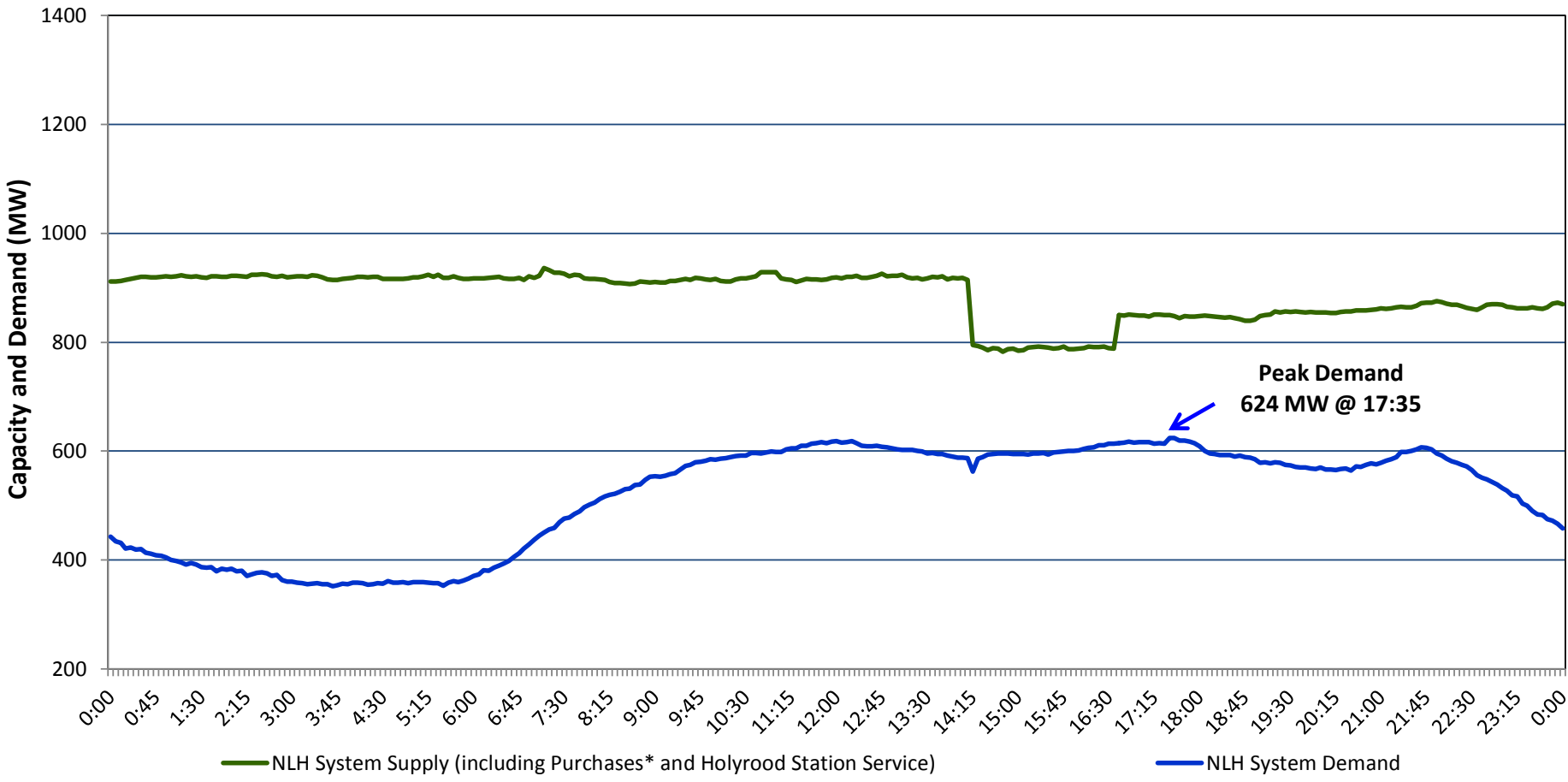


Newfoundland Labrador Hydro (NLH)
Supply and Demand Status Report Filed July 15, 2014

Section 1
NLH System Island Interconnected Supply and Demand
Actual 24 Hour System Performance For July 14, 2014



Supply Notes for July 14, 2014

- As of 0422 hours, Feb. 17, 2014, Bay d'Espoir Unit 6 unavailable for service (77 MW).
- As of 0800 hours, May 21, 2014, Holyrood Unit 2 removed from service for annual maintenance (165 MW).
- As of 1554 hours, May 24, 2014, Bay d'Espoir Unit 3 removed from service for annual maintenance (76.5 MW).
- As of 0858 hours, June 13, 2014, Stephenville Gas Turbine End A removed from service for annual maintenance (25 MW).
- As of 1800 hours, July 04, 2014, Stephenville Gas Turbine End B derated to 14 MW (25 MW).
- As of 0755 hours, July 06, 2014, Bay d'Espoir Unit 4 removed from service for annual maintenance (76.5 MW).
- As of 1139 hours, July 09, 2014, Cat Arm Unit 1 derated to 53 MW (67 MW).
- As of 1200 hours, July 09, 2014, Hardwoods Gas Turbine End B removed from service on a forced outage (25 MW).
- As of 1427 hours, July 11, 2014, Holyrood Unit 1 removed from service due to economic dispatch (170 MW).
- As of 1254 hours, July 13, 2014, Upper Salmon Unit does not meet Available Generation Reserves (> one hour start up time), therefore unit reserve capacity is unavailable (84 MW).
- At 1414 hours, July 14, 2014, Holyrood Unit 3 tripped offline. Unit returned to service at 1635 hours. Unit derated to 90 MW (from 150 MW).

Section 2
NLH System Island Interconnected Supply and Demand

July 15, 2014 NLH System Outlook ³		Five-Day Forecast	Temperature (°C)		NLH System Demand (MW)	
			Morning	Evening	Morning	Evening
Available NLH System Supply: ⁴	845 MW	Tuesday, July 15, 2014	17	23	625	625
Current St. John's Temperature:	17 °C	Wednesday, July 16, 2014	17	23	625	625
Current St. John's Windchill:	N/A °C	Thursday, July 17, 2014	19	22	625	625
NLH System Peak Demand Forecast:	625 MW	Friday, July 18, 2014	19	22	625	575
		Saturday, July 19, 2014	15	22	575	550

Supply Notes for July 15, 2014³

-
- Notes:
1. Generation outages for running and corrective maintenance are included. These are not unusual for power system operations. They generally do not impact customer supply. The power system operators schedule outages to system equipment whenever possible to coincide with periods when customer demands are low and sufficient supply reserves are available. However, from time to time equipment outages are necessary and reserves may be impacted.
 2. Due to the Island Interconnected System being isolated from the larger North American grid, when there is a sudden loss of large generating units some customer's load must be interrupted for short periods to bring generation output equal to customer demand. This automatic action of power system protection, referred to as underfrequency load shedding, is necessary to ensure the integrity and reliability of system equipment. Underfrequency events typically occur 5 to 8 times per year on the Island Interconnected System and the resultant customer load interruptions are generally less than 30 minutes.
 3. As of 0800 Hours.
 4. Gross output including station service at Holyrood (24.5 MW) and improved hydraulic output due to water levels (35 MW). Includes Nalcor Exploits, Star Lake, Rattle Brook, CBPP Co-Gen. Excludes wind generation and DLP Secondary.

Section 3
Peak Demand Information
Previous Day Actual Peak and Current Day Forecast Peak

July 14, 2014	Actual NLH System Island Interconnected Peak Demand ¹	17:35	624 MW
July 15, 2014	Forecast NLH System Island Interconnected Peak Demand		625 MW
July 14, 2014	Actual Total Island Peak Demand ²	17:40	751 MW
July 15, 2014	Forecast Total Island Peak Demand		750 MW

- Notes:
1. NLH System Island Interconnected is supplied by generation owned by NLH as well as NLH Power Purchases as detailed in Section 1 above.
 2. Total Island System Demand is supplied by NLH generation and NLH Power Purchases, plus generation owned and operated by Newfoundland Power and Corner Brook Pulp & Paper to meet their respective supply needs.