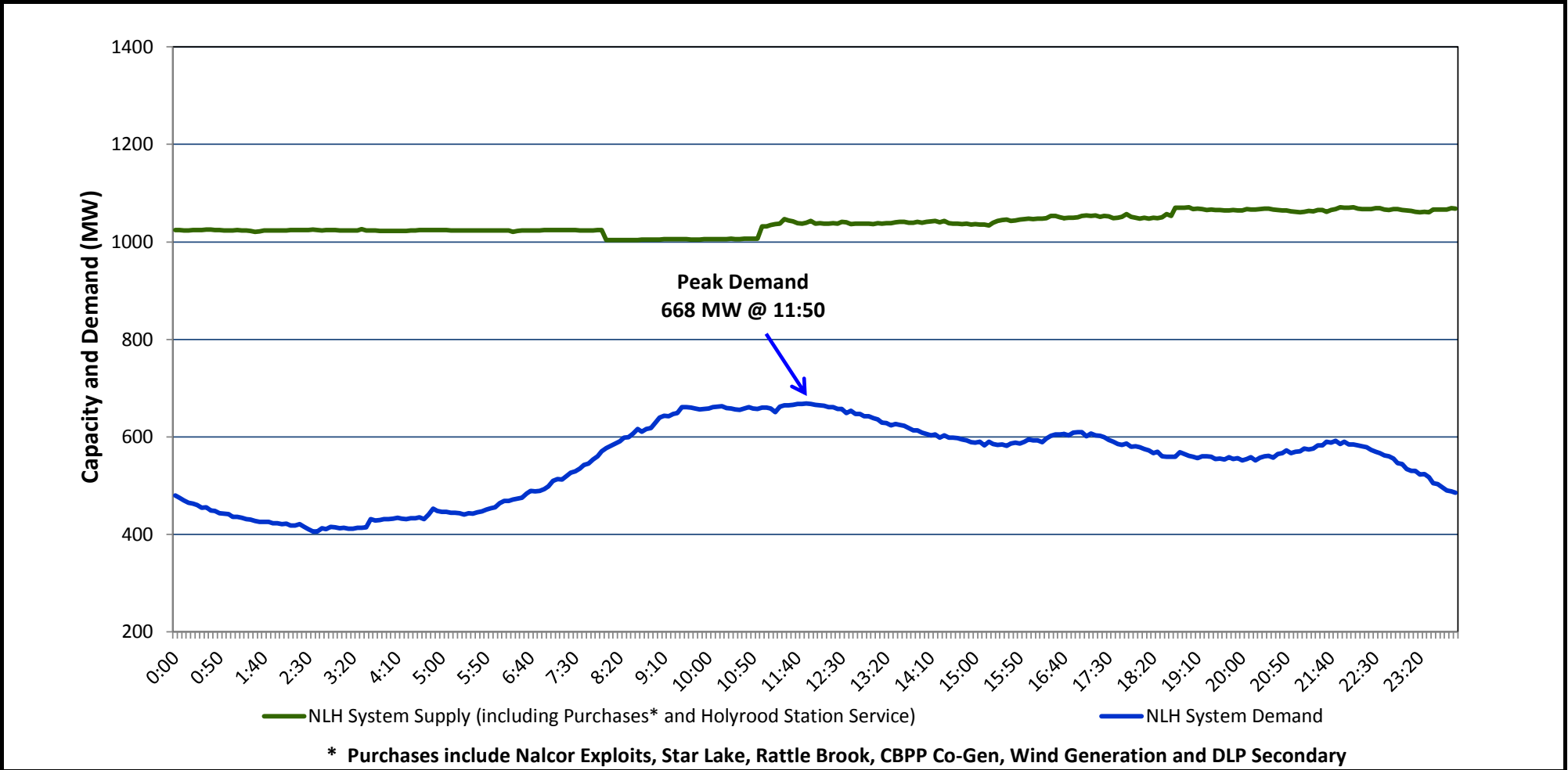


Newfoundland Labrador Hydro (NLH)
Supply and Demand Status Report Filed June 24, 2014

Section 1
NLH System Island Interconnected Supply and Demand
Actual 24 Hour System Performance For June 21, 2014



Supply Notes for June 21, 2014

→ As of 0422 hours, Feb. 17, 2014, Bay d'Espoir Unit 6 (77 MW) unavailable for service.

→ As of 1717 hours, April 10, 2014, Holyrood Unit 3 removed from service for annual maintenance (150 MW).

→ As of 0800 hours, May 21, 2014, Holyrood Unit 2 removed from service for annual maintenance (165 MW).

→ As of 1554 hours, May 24, 2014, Bay d'Espoir Unit 3 removed from service for annual maintenance (76.5 MW).

→ As of 0858 hours, June 13, 2014, Stephenville Gas Turbine End A removed from service for annual maintenance (25 MW).

→ As of 0737 hours, June 15, 2014, Cat Arm Unit 1 removed from service for annual maintenance (67 MW).

→ As of 0900 hours, June 18, 2014, Holyrood Unit 1 derated to 130 MW based on latest load test results (from 170 MW).

→ At 0824 hours, June 21, 2014, Hardwoods Gas Turbine End B removed from service for maintenance (25 MW). Unit returned to service at 1845 hours.

→ At 1100 hours, June 21, 2014, Hardwoods Gas Turbine End A returned to service (25 MW).

Section 2								
NLH System Island Interconnected Supply and Demand								
June 22, 2014 NLH System Outlook ³			Five-Day Forecast	Temperature (°C)		NLH System Demand (MW)		
				Morning	Evening	Morning	Evening	
Available NLH System Supply: ⁴	1,050	MW	Sunday, June 22, 2014	8	12	675	600	
Current St. John's Temperature:	8	°C	Monday, June 23, 2014	11	19	625	575	
Current St. John's Windchill:	N/A	°C	Tuesday, June 24, 2014	16	21	600	550	
NLH System Peak Demand Forecast:	675	MW	Wednesday, June 25, 2014	15	17	625	600	
			Thursday, June 26, 2014	14	15	625	625	

Supply Notes for June 22, 2014³

→

Notes:

- Generation outages for running and corrective maintenance are included. These are not unusual for power system operations. They generally do not impact customer supply. The power system operators schedule outages to system equipment whenever possible to coincide with periods when customer demands are low and sufficient supply reserves are available. However, from time to time equipment outages are necessary and reserves may be impacted.
- Due to the Island Interconnected System being isolated from the larger North American grid, when there is a sudden loss of large generating units some customer's load must be interrupted for short periods to bring generation output equal to customer demand. This automatic action of power system protection, referred to as underfrequency load shedding, is necessary to ensure the integrity and reliability of system equipment. Underfrequency events typically occur 5 to 8 times per year on the Island Interconnected System and the resultant customer load interruptions are generally less than 30 minutes.
- As of 0800 Hours.
- Gross output including station service at Holyrood (24.5 MW) and improved hydraulic output due to water levels (35 MW). Includes Nalcor Exploits, Star Lake, Rattle Brook, CBPP Co-Gen. Excludes wind generation and DLP Secondary.

Section 3 Peak Demand Information Previous Day Actual Peak and Current Day Forecast Peak			
June 21, 2014	Actual NLH System Island Interconnected Peak Demand ¹	11:50	668 MW
June 22, 2014	Forecast NLH System Island Interconnected Peak Demand		675 MW
June 21, 2014	Actual Total Island Peak Demand ²	12:00	835 MW
June 22, 2014	Forecast Total Island Peak Demand		800 MW
Notes: 1. NLH System Island Interconnected is supplied by generation owned by NLH as well as NLH Power Purchases as detailed in Section 1 above. 2. Total Island System Demand is supplied by NLH generation and NLH Power Purchases, plus generation owned and operated by Newfoundland Power and Corner Brook Pulp & Paper to meet their respective supply needs.			