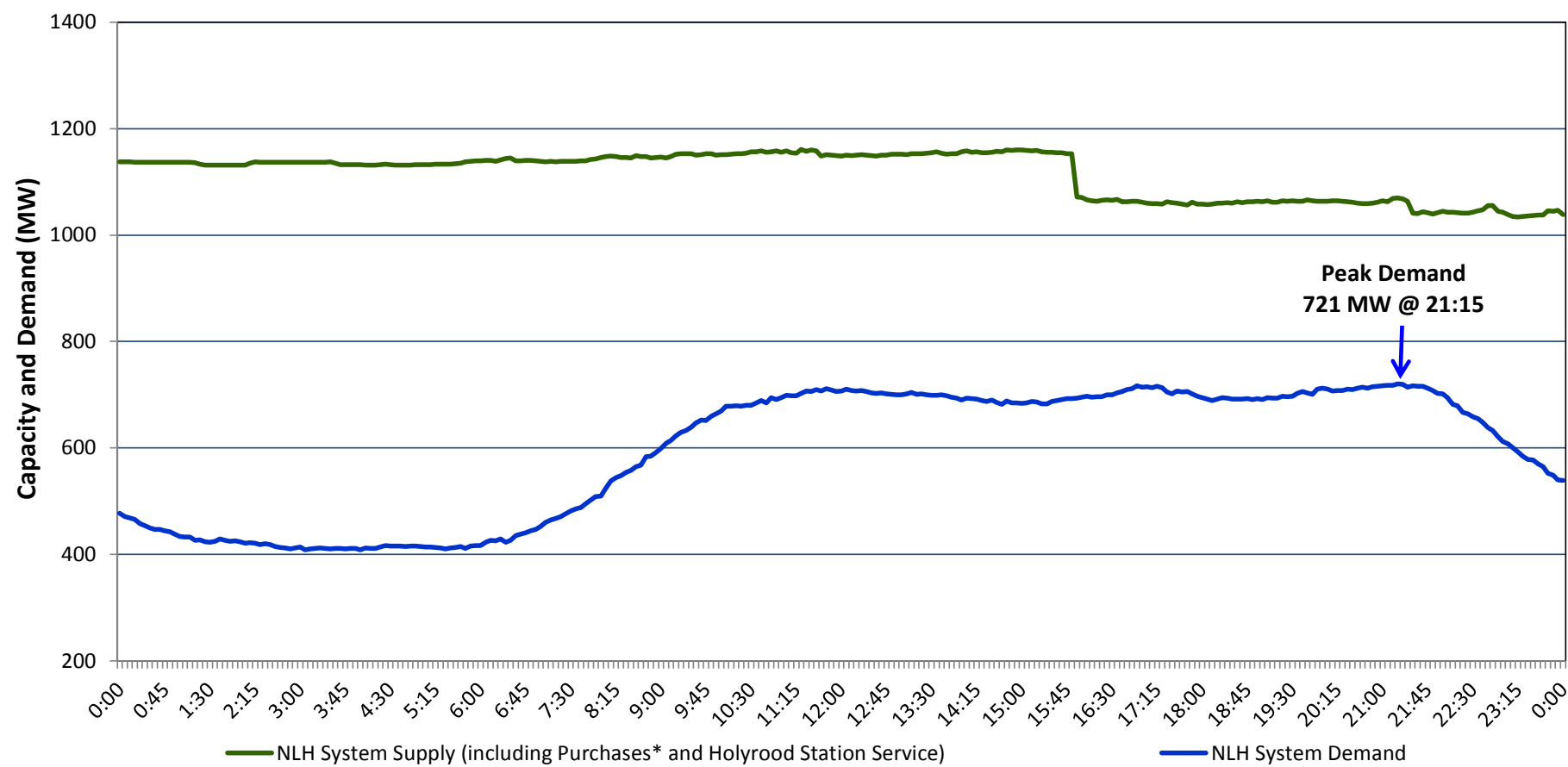


**Newfoundland Labrador Hydro (NLH)  
Supply and Demand Status Report Filed June 09, 2014 (Revised - June 09, 2014)**

**Section 1  
NLH System Island Interconnected Supply and Demand  
Actual 24 Hour System Performance For June 08, 2014**



\* Purchases include Nalcor Exploits, Star Lake, Rattle Brook, CBPP Co-Gen, Wind Generation and DLP Secondary

**Supply Notes for June 08, 2014**

- As of 0422 hours, Feb. 17, 2014, Bay d'Espoir Unit 6 (77 MW) unavailable for service.
- As of 1717 hours, April 10, 2014, Holyrood Unit 3 removed from service for annual maintenance (150 MW).
- As of 0800 hours, May 21, 2014, Holyrood Unit 2 removed from service for annual maintenance (165 MW).
- As of 1554 hours, May 24, 2014, Bay d'Espoir Unit 3 removed from service for annual maintenance (76.5 MW).
- As of 1405 hours, June 06, 2014, Stephenville Gas Turbine End B unavailable for service (25 MW).
- As of 1640 hours, June 06, 2014, Hardwoods Gas Turbine unavailable for service (50 MW).
- At 1523 hours, June 08, 2014, Upper Salmon Unit removed from service on a forced outage (84 MW).

**Section 2  
NLH System Island Interconnected Supply and Demand**

June 9, 2014	NLH System Outlook <sup>3</sup>	Five-Day Forecast	Temperature (°C)		NLH System Demand (MW)	
			Morning	Evening	Morning	Evening
Available NLH System Supply: <sup>4</sup>	1,025 MW	Monday, June 09, 2014	5	9	775	800
Current St. John's Temperature:	5 °C	Tuesday, June 10, 2014	5	7	750	750
Current St. John's Windchill:	N/A °C	Wednesday, June 11, 2014	6	7	750	750
NLH System Peak Demand Forecast:	800 MW	Thursday, June 12, 2014	3	6	800	750
		Friday, June 13, 2014	5	9	775	650

**Supply Notes for June 09, 2014<sup>3</sup>**

→

- Notes:
1. Generation outages for running and corrective maintenance are included. These are not unusual for power system operations. They generally do not impact customer supply. The power system operators schedule outages to system equipment whenever possible to coincide with periods when customer demands are low and sufficient supply reserves are available. However, from time to time equipment outages are necessary and reserves may be impacted.
  2. Due to the Island Interconnected System being isolated from the larger North American grid, when there is a sudden loss of large generating units some customer's load must be interrupted for short periods to bring generation output equal to customer demand. This automatic action of power system protection, referred to as underfrequency load shedding, is necessary to ensure the integrity and reliability of system equipment. Underfrequency events typically occur 5 to 8 times per year on the Island Interconnected System and the resultant customer load interruptions are generally less than 30 minutes.
  3. As of 0800 Hours.
  4. Gross output including station service at Holyrood (24.5 MW) and improved hydraulic output due to water levels (35 MW). Includes Nalcor Exploits, Star Lake, Rattle Brook, CBPP Co-Gen. Excludes wind generation and DLP Secondary.

**Section 3  
Peak Demand Information  
Previous Day Actual Peak and Current Day Forecast Peak**

June 8, 2014	Actual NLH System Island Interconnected Peak Demand <sup>1</sup>	21:15	721 MW
June 9, 2014	Forecast NLH System Island Interconnected Peak Demand		800 MW
June 8, 2014	Actual Total Island Peak Demand <sup>2</sup>	21:35	888 MW
June 9, 2014	Forecast Total Island Peak Demand		900 MW

- Notes:
1. NLH System Island Interconnected is supplied by generation owned by NLH as well as NLH Power Purchases as detailed in Section 1 above.
  2. Total Island System Demand is supplied by NLH generation and NLH Power Purchases, plus generation owned and operated by Newfoundland Power and Corner Brook Pulp & Paper to meet their respective supply needs.