

- 1 Q. (page 53, report entitled Upgrade Transmission Line Corridor - Bay d'Espoir to
2 Western Avalon) It is stated "Without this new transmission line, imports from Nova
3 Scotia during a LIL outage .will be limited". By how much will imports via Nova
4 Scotia be limited?
5
6
7 A. Due to transmission constraints in Nova Scotia, Emera can supply a maximum of
8 300 MW over the Maritime Link as emergency supply in the event of a permanent
9 bipole outage on the Labrador-Island HVdc Link. Figure 1 is a 2018 peak load flow
10 plot assuming 300 MW is available from Nova Scotia with maximum Island
11 generation, the third circuit in service and the LIL out of service.
12

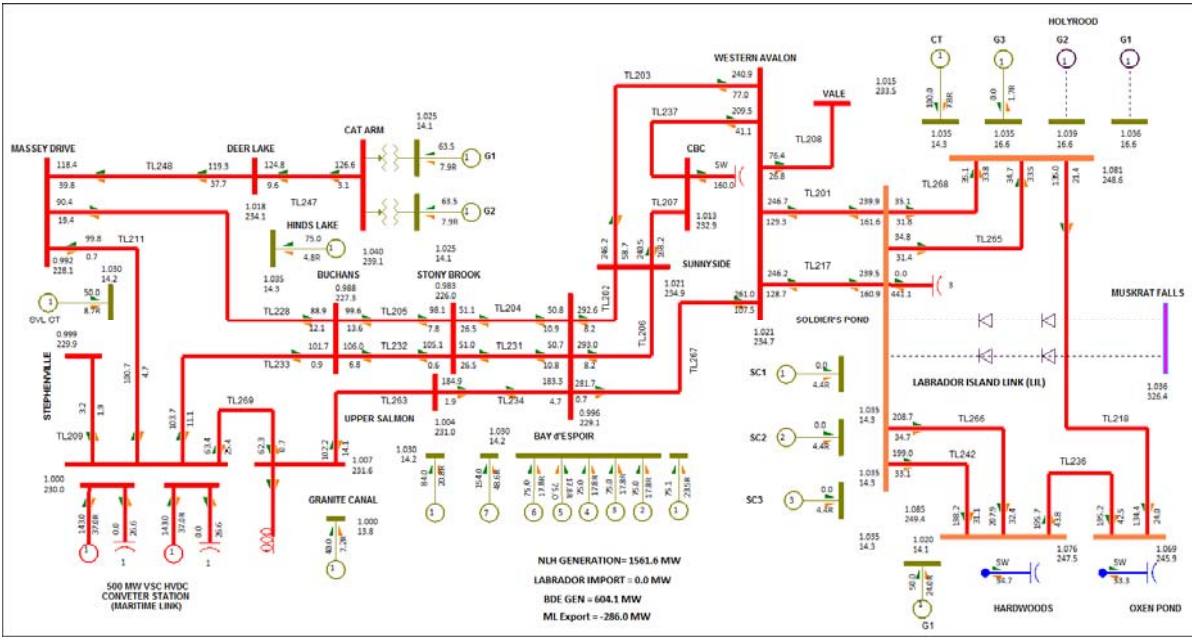


Figure 1: 300 MW Import from NS - Maximum Island Generation with Third Circuit - LIL Out of Service

- 13 To illustrate the potential transfer limitations of importing power from Nova Scotia,
14 the same scenario was studied without the BDE-WAV third circuit installation.

1 Figure 2 is a load flow plot maximizing Nova Scotia imports on the ML with
2 maximum Island generation and the LIL and third circuit are out of service. In this
3 case, only 90 MW can be transferred over the bulk 230 kV transmission system due
4 to the current carrying limitations of transmission lines in the BDE-WAV corridor.
5 Transmission lines TL202/TL206 and TL203 are at their maximum thermal rating.
6

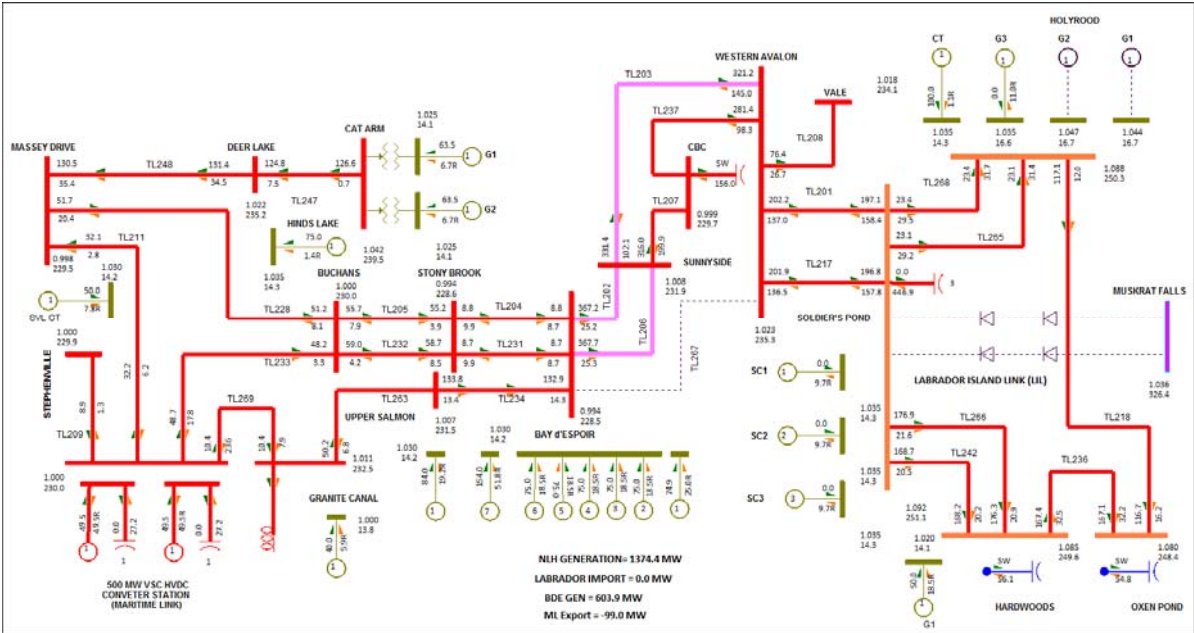


Figure 2: 90 MW Import from NS - Maximum Island Generation without Third Circuit (TL267) - LIL Out of Service