

1    Q.    **2012 Capital Plan**

2            Explain how the realignment of engineering functions into Project Execution and  
3            Technical Services functions described on p. 8-9 of the 2012 Capital Plan differs  
4            from the prior structure and how it will enhance the design, planning and execution  
5            of capital projects.

6

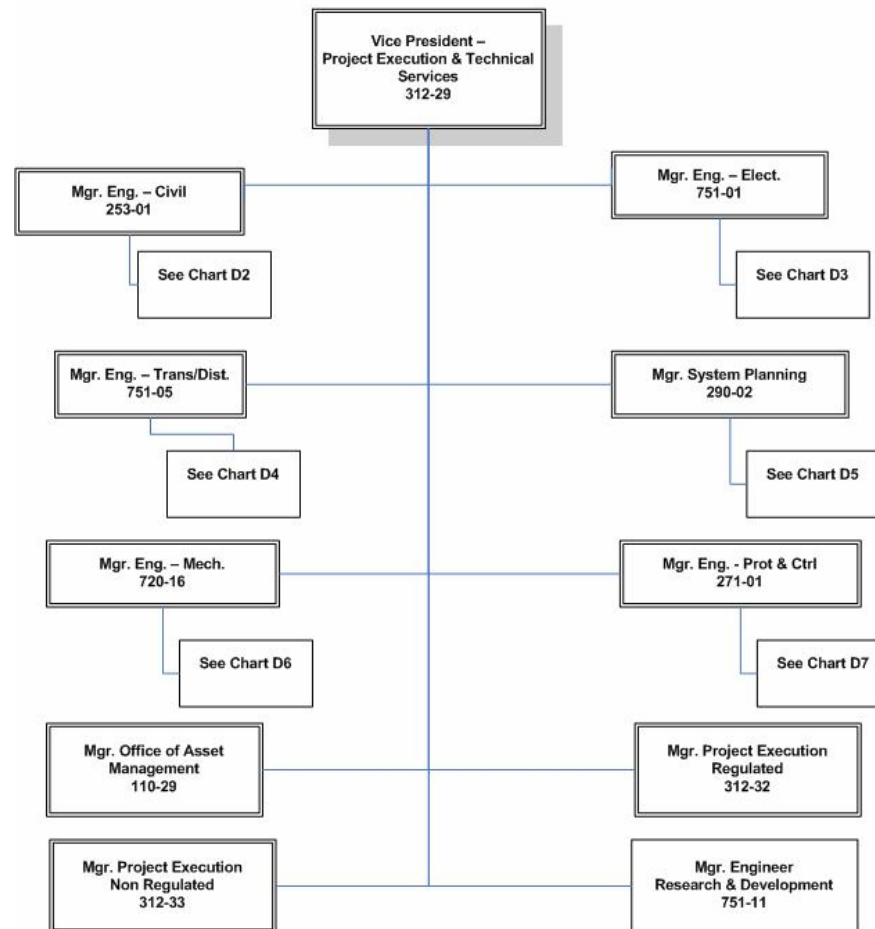
7

8    A.    Please see Attachments 1 and 2 for the current and previous organizational charts,  
9            respectively. The current structure is anticipated to enhance the design, planning  
10           and execution of capital projects in that:

- 11           • Specialization by staff will develop and grow competencies and expertise;
- 12           • Dedicated resources will result in playing to the natural strengths and aptitudes  
13           of personnel;
- 14           • Personnel will be able to focus more fully on their specific responsibilities;
- 15           • There will be increased ownership and accountability for assigned  
16           responsibilities; and
- 17           • More metrics are being developed for measuring the performance of  
18           individuals.

Project Execution & Technical Services

D1



Engineering Services Organizational Chart

