

1 Q. What training and experience is necessary to become a fully trained plant operator
2 and a lead operator respectively.

3

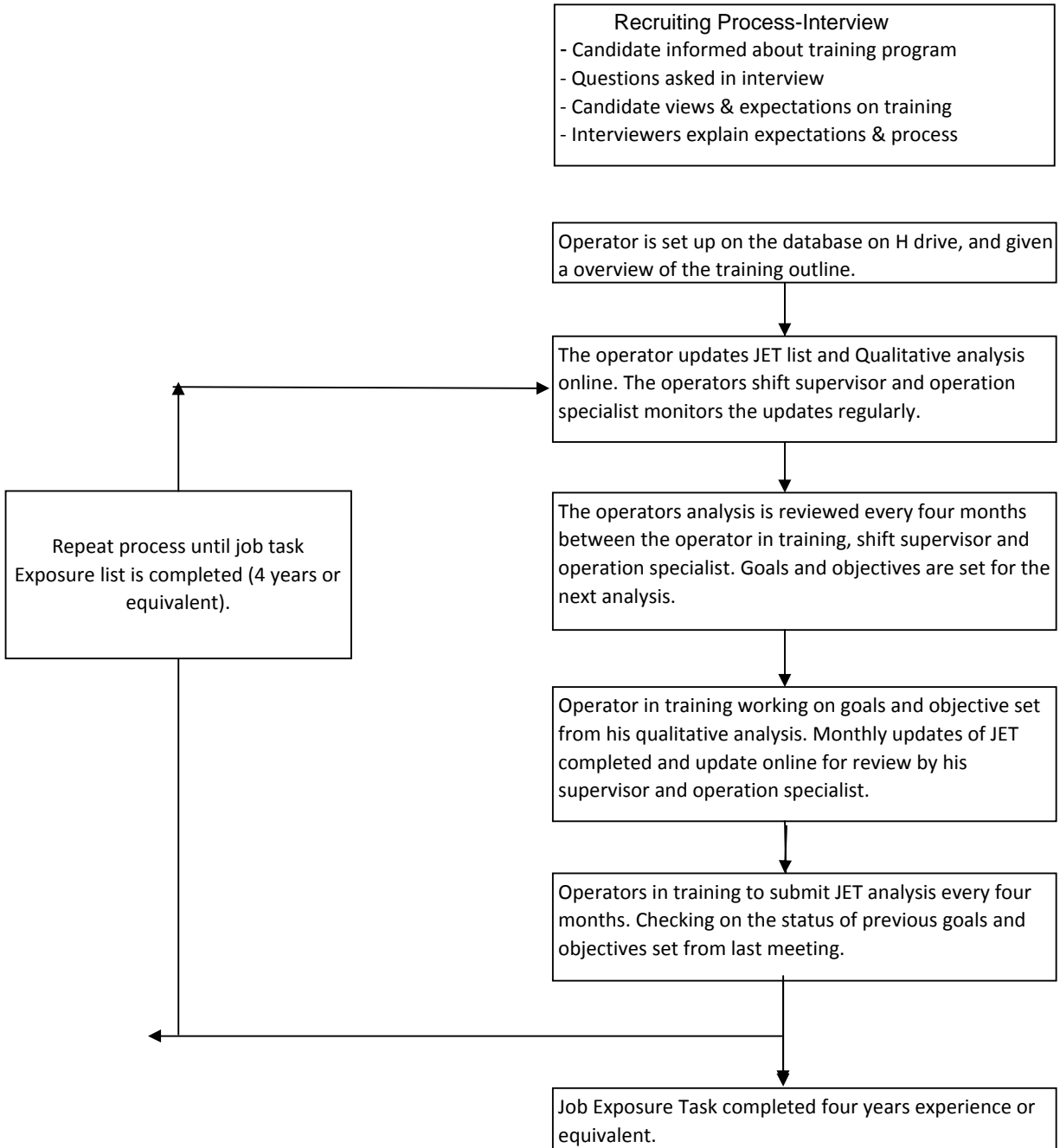
4

5 A. It requires four years of training to become a fully-trained plant operator (see
6 Attachment 1 for flow chart). This consists of completing 622 tasks (Attachment 2),
7 13 work assignments, shadowing an operator for two years in the field of duties,
8 and two years of control room duties.

9

10 The operator may become a lead after becoming a fully-trained TPO, with a
11 minimum of two years in the TPO classification and a Second Class Power
12 Engineering Certification.

HTGS flow process for new operators in training using the Job Exposure Task database.



Task	Operator's Name	Tasks	System	POI	POP	Ref Mat	Frequency	Completed
1	Operator's name	Complete Heavy Oil Assignment Stage 1	Fuel Oil				Once	NO
2	Operator's name	Complete Heavy Oil Assignment Stage 2	Fuel Oil				Once	NO
3	Operator's name	Complete Light Oil Assignment	Fuel Oil				Once	NO
4	Operator's name	Clean Heavy Oil Suction Strainers Stage 1	Fuel Oil		POP 50		Often	NO
5	Operator's name	Clean Heavy Oil Suction Strainers Stage 2	Fuel Oil		POP 50		Often	NO
6	Operator's name	Gauge Heavy Oil storage tanks	Fuel Oil	POI 47			Often	NO
7	Operator's name	Gauge Light Oil storage tanks	Fuel Oil	POI 47			Often	NO
8	Operator's name	Gauge Fuel Additive storage tanks	Fuel Oil	POI 47			Often	NO
9	Operator's name	Check Dock and Tank farm	Fuel Oil				Often	NO
10	Operator's name	Isolate Heavy Oil guns	Fuel Oil				Often	NO
11	Operator's name	Heavy Oil guns Inspect for leakage Stage 1	Fuel Oil		POP 123		Often	NO
12	Operator's name	Heavy Oil guns inspect for leakage Stage 2	Fuel Oil		POP 128		Often	NO
13	Operator's name	Light Oil guns - Inspect for leakage.	Fuel Oil				Often	NO
14	Operator's name	Check Fuel Additive Pumps Capacity Rate	Fuel Oil				Often	NO
15	Operator's name	Drain Tank Farm	Fuel Oil				Occasional	NO
16	Operator's name	Drain Day Tank Dyke	Fuel Oil				Occasional	NO
17	Operator's name	Heavy Oil guns - Remove from and Re-install in Boiler Stage 1	Fuel Oil				Occasional	NO
18	Operator's name	Heavy Oil guns - Dismantle, clean, reassemble and test. Stage 1	Fuel Oil		POP 123		Occasional	NO
19	Operator's name	Tighten Heavy Oil guns when in service. Stage 1	Fuel Oil				Occasional	NO
20	Operator's name	Heavy Oil gun - Remove from and re-install in boiler Stage 2	Fuel Oil				Occasional	NO
21	Operator's name	Heavy Oil guns - Dismantle, clean, reassemble and test Stage 2	Fuel Oil		POP 128		Occasional	NO
22	Operator's name	Tighten Heavy Oil gun when in service. Stage 2	Fuel Oil		POP 128		Occasional	NO
23	Operator's name	Start up Heavy Oil guns locally Units 1 & 2	Fuel Oil		POP 40		Occasional	NO
24	Operator's name	Start up Heavy Oil guns locally Unit 3	Fuel Oil		POP 46		Occasional	NO
25	Operator's name	Place Tank Farm in service	Fuel Oil				Occasional	NO

Task	Operator's Name	Tasks	System	POI	POP	Ref Mat	Frequency	Completed
26	Operator's name	Switch Heavy Oil Tanks	Fuel Oil		POP 48		Occasional	NO
27	Operator's name	Back-flush Heavy Oil Storage Tank Suction Heaters	Fuel Oil		POP 127		Occasional	NO
28	Operator's name	Clean Light Oil strainers	Fuel Oil		POP 50		Occasional	NO
29	Operator's name	Light Oil guns - Isolate and remove for cleaning.	Fuel Oil				Occasional	NO
30	Operator's name	Light Oil guns - dismantle guns.	Fuel Oil				Occasional	NO
31	Operator's name	Light Oil guns - clean and test.	Fuel Oil				Occasional	NO
32	Operator's name	Start-up Light Oil guns locally Unit 1 & 2	Fuel Oil		POP 43		Occasional	NO
33	Operator's name	Start up Light Oil guns locally Unit 3	Fuel Oil		POP 43		Occasional	NO
34	Operator's name	Start Fuel Additive Agitator	Fuel Oil				Occasional	NO
35	Operator's name	Start-up Fuel Additive Pump	Fuel Oil				Occasional	NO
36	Operator's name	Refill Fuel Additive, Unit Storage tanks, for stage 1 and 2	Fuel Oil				Occasional	NO
37	Operator's name	Unload Light Oil road Tanker	Fuel Oil	POI 45	POP 56		Occasional	NO
38	Operator's name	Unload Heavy Oil Sea Tanker	Fuel Oil	POI 44, 42, 46, 47	POP 47		Occasional	NO
39	Operator's name	Remove Tank Farm from service.	Fuel Oil				Rare	NO
40	Operator's name	Retract any gun still inserted after it is shut down Manually or local switch.	Fuel Oil				Rare	NO
41	Operator's name	Clean Heavy Oil Discharge Strainers Stage 1	Fuel Oil				Rare	NO
42	Operator's name	Clean Heavy Oil Discharge Strainers Stage 2	Fuel Oil				Rare	NO
43	Operator's name	Isolate Heavy Oil Tank Suction Heaters	Fuel Oil				Rare	NO
44	Operator's name	Unload Fuel Additive road Tanker	Fuel Oil	POI 46	POP 52		Rare	NO
45	Operator's name	Put Heavy Oil Heating Set in Service	Fuel Oil		POP 49		Rare	NO
46	Operator's name	Prepare / monitor start up of Heavy Oil system pumps locally	Fuel Oil		POP 49		Rare	NO
47	Operator's name	Prepare / monitor start up of Light Oil system locally	Fuel Oil		POP 55, 43		Rare	NO
48	Operator's name	Complete Raw Water Assignment	Water Treatment and RFW				Once	NO
49	Operator's name	Complete Reserve Feedwater Assignment	Water Treatment and RFW				Once	NO
50	Operator's name	Put Water Treatment Plant in service	Water Treatment and RFW	POI 60			Often	NO

Task	Operator's Name	Tasks	System	POI	POP	Ref Mat	Frequency	Completed
51	Operator's name	Shut down Water Treatment Plant	Water Treatment and RFW				Often	NO
52	Operator's name	Monitor Water Treatment Plant Sodium	Water Treatment and RFW				Often	NO
53	Operator's name	Start-up R.F.W. Pump	Water Treatment and RFW				Often	NO
54	Operator's name	Shut down R.F.W. Pump	Water Treatment and RFW				Often	NO
55	Operator's name	Check Waste Water Treatment Plant Basins	Water Treatment and RFW		POP 77		Often	NO
56	Operator's name	Monitor Waste Water Treatment Plant effluent PH	Water Treatment and RFW		POP 77		Often	NO
57	Operator's name	Monitor condensate polisher sodium	Water Treatment and RFW		POP 53		Often	NO
58	Operator's name	Monitor PH in boiler blowdown water	Water Treatment and RFW				Often	NO
59	Operator's name	Monitor sodium in steam units 1 & 2	Water Treatment and RFW				Often	NO
60	Operator's name	Monitor Chem. Analysis Meters (i.e.) PH, Cond. Sodium, etc.	Water Treatment and RFW				Often	NO
61	Operator's name	Pump out Air Heater Sumps for stage 1 and 2	Water Treatment and RFW				Occasional	NO
62	Operator's name	Switch Trains in Water Treatment Plant	Water Treatment and RFW		POP 51		Occasional	NO
63	Operator's name	Switch mixed beds	Water Treatment and RFW				Occasional	NO
64	Operator's name	Fill Demineralized Water Storage Tanks	Water Treatment and RFW				Occasional	NO
65	Operator's name	Fill high level tank (s) of reserve feedwater (RFW) System with transfer	Water Treatment and RFW				Occasional	NO
66	Operator's name	Place reserve feedwater (RFW) system transfer pump in auto (unit	Water Treatment and RFW				Occasional	NO
67	Operator's name	Start Phosphate Pump, All Units	Water Treatment and RFW				Occasional	NO
68	Operator's name	Switch Phosphate between Units 1 and 2 (Stage 1)	Water Treatment and RFW				Occasional	NO
69	Operator's name	Manually Backwash Water Treatment Plant Filters (Sand Filters)	Water Treatment and RFW				Occasional	NO
70	Operator's name	Start Ammonia & Control Pump	Water Treatment and RFW				Occasional	NO
71	Operator's name	Place Condensate Polishing Plant in service	Water Treatment and RFW		POP 53		Occasional	NO
72	Operator's name	Switch Polisher Mixed Beds	Water Treatment and RFW				Occasional	NO
73	Operator's name	Fill Hotwell from high level tank(s) of reserve feedwater (RFW) system	Water Treatment and RFW				Rare	NO
74	Operator's name	Transfer Reserve Feedwater from demineralized storage tank to Low	Water Treatment and RFW				Rare	NO
75	Operator's name	Place High level tanks in Common	Water Treatment and RFW				Rare	NO

Task	Operator's Name	Tasks	System	POI	POP	Ref Mat	Frequency	Completed
76	Operator's name	Direct Air Heater Wash Water to Waste Water Treatment Plant Basin	Water Treatment and RFW		POP 26 & 77		Rare	NO
77	Operator's name	Start Clearwell Pump	Water Treatment and RFW	POI 60			Rare	NO
78	Operator's name	Switch Reserve Feedwater from one unit to another	Water Treatment and RFW				Rare	NO
79	Operator's name	Start Raw Water Sump Pump	Water Treatment and RFW				Rare	NO
80	Operator's name	Shut down continual flow Basin (emergency)	Water Treatment and RFW		POP 77		Rare	NO
81	Operator's name	Complete General Service Cooling Water Assignment	Cooling Water				Once	NO
82	Operator's name	Complete Circulating Water (C.W.) System Assignment	Cooling Water				Once	NO
83	Operator's name	Tighten leaks where adjustment controls the problem. i.e. unions.	Cooling Water				Often	NO
84	Operator's name	Check Cooling Water flow on Running equipment	Cooling Water				Often	NO
85	Operator's name	Clear T.G. Pump(s) Bearing Water drain cups, for unit 3	Cooling Water				Often	NO
86	Operator's name	Check and adjust seal water flow to C.W. pumps.	Cooling Water				Often	NO
87	Operator's name	Rotate C.W. Inlet screens manually.	Cooling Water				Often	NO
88	Operator's name	Operate C.W. screenwash pumps manually.	Cooling Water				Often	NO
89	Operator's name	Put C.W. screenwash pumps in service.	Cooling Water				Often	NO
90	Operator's name	Remove C.W. screenwash pumps from service.	Cooling Water				Often	NO
91	Operator's name	Check C.W. pump drain lines for gland leaks.	Cooling Water				Often	NO
92	Operator's name	Add Sawdust to C.W. Inlet	Cooling Water				Often	NO
93	Operator's name	Add Sawdust to Unit 3 Amertap System	Cooling Water				Occasional	NO
94	Operator's name	Add bearing oil to C.W. pump(s) motor bearings.	Cooling Water				Occasional	NO
95	Operator's name	Place Water Analytical Cooling (W.A.C.) System Pumps in Service	Cooling Water				Occasional	NO
96	Operator's name	Manually Adjust Cooling water Flow to W.A.C. System Sample Cooling	Cooling Water				Occasional	NO
97	Operator's name	Prepare / startup condenser Circulating Water (C.W.) pumps.	Cooling Water	POI 22	POP 15		Occasional	NO
98	Operator's name	Clean C.W. Pump Gland Seal cooling strainers.	Cooling Water				Occasional	NO
99	Operator's name	General Service Cooling Water, Clean Salt and Freshwater side of Strainers.	Cooling Water				Occasional	NO
100	Operator's name	General service cooling water heat exchangers Manually operate Sea	Cooling Water		POP 139		Occasional	NO

Task	Operator's Name	Tasks	System	POI	POP	Ref Mat	Frequency	Completed
101	Operator's name	Put general service cooling water heat exchangers in service on Unit 3	Cooling Water		POP 139		Occasional	NO
102	Operator's name	Put T.G. Coolers' sea water control valve in manual - Unit 1 and 2.	Cooling Water				Occasional	NO
103	Operator's name	Prepare T.G. Pumps for service/standby on Units 1 and 2	Cooling Water	POI 20			Occasional	NO
104	Operator's name	Remove T.G. Pumps from service on Unit 1 and 2.	Cooling Water				Occasional	NO
105	Operator's name	Maintain proper lubrication on T.G. Pumps for Units 1 and 2.	Cooling Water				Occasional	NO
106	Operator's name	Operate T.G. Coolers Sea water control valve in manual on Unit 3	Cooling Water		POP 140		Occasional	NO
107	Operator's name	Prepare T.G. Pumps for service / standby on Unit 3	Cooling Water		POP 140 & 015		Occasional	NO
108	Operator's name	Remove T.G. Pumps from service on Unit 3	Cooling Water		POP 140 & 015		Occasional	NO
109	Operator's name	Maintain proper lubrication T.G. Pump(s) Grease cups, for Unit 3.	Cooling Water				Occasional	NO
110	Operator's name	Ensure condenser is flooded during normal operation.	Cooling Water		POP 15		Occasional	NO
111	Operator's name	Back Wash Condenser	Cooling Water		POP 65		Occasional	NO
112	Operator's name	Isolate one half of condenser	Cooling Water		POP 65		Rare	NO
113	Operator's name	C.W. Pumps - operate discharge valves manually.	Cooling Water		POP 15		Rare	NO
114	Operator's name	Remove C.W. System from service.	Cooling Water		POP 15		Rare	NO
115	Operator's name	Inspect and test Emergency Showers and Eyewash Stations.	Fire System				Occasional	NO
116	Operator's name	Inspect fire extinguishers.	Fire System				Occasional	NO
117	Operator's name	Inspect fire Hose stations.	Fire System				Occasional	NO
118	Operator's name	Acknowledge and respond to fire system alarms	Fire System				Occasional	NO
119	Operator's name	Inspect and test fire system Deluge Valves & Excess Pressure Pumps.	Fire System				Occasional	NO
120	Operator's name	Perform weekly P.M. Checks on Fire system zone valves and Smoke	Fire System				Occasional	NO
121	Operator's name	Fire system Jockey pump (Booster Pump). Put in service.	Fire System				Occasional	NO
122	Operator's name	Remove Fire system Jockey pump from service.	Fire System				Occasional	NO
123	Operator's name	Put Electric Fire Pump in service.	Fire System				Occasional	NO
124	Operator's name	Remove Electric Fire Pump from service.	Fire System				Occasional	NO
125	Operator's name	Electric Fire Pump - perform PM check.	Fire System				Occasional	NO

Task	Operator's Name	Tasks	System	POI	POP	Ref Mat	Frequency	Completed
126	Operator's name	Put Diesel Fire Pump in service.	Fire System				Occasional	NO
127	Operator's name	Remove Diesel Fire Pump from service.	Fire System				Occasional	NO
128	Operator's name	Diesel Fire Pump - perform PM check.	Fire System				Occasional	NO
129	Operator's name	Fill Diesel Fire Pump Light Oil tank if required.	Fire System				Occasional	NO
130	Operator's name	Add Lube Oil to Diesel Fire Pump if required.	Fire System				Occasional	NO
131	Operator's name	Add Coolant to Diesel Fire Pump if required.	Fire System				Occasional	NO
132	Operator's name	Fight fires.	Fire System				Rare	NO
133	Operator's name	Energize fire & water main.	Fire System				Rare	NO
134	Operator's name	Remove firewater main from service	Fire System				Rare	NO
135	Operator's name	Lungstrum air heaters. Check air heater drives for rotation.	Boiler				Often	NO
136	Operator's name	Lungstrum air heaters. Check viewing windows for rotation, moisture and	Boiler				Often	NO
137	Operator's name	Lungstrum air heaters. Test cooling water flow and pressure to top	Boiler				Often	NO
138	Operator's name	Lungstrum air heaters. Test cooling water flow and pressure to bottom	Boiler				Often	NO
139	Operator's name	PM checks - FD Fan intake louvers, 11th floor.	Boiler	POI 78			Occasional	NO
140	Operator's name	Position F.D. Fan intake for inside air / outside air mode	Boiler				Occasional	NO
141	Operator's name	Sootblowers - Inspect during operation.	Boiler	POI 10			Occasional	NO
142	Operator's name	Sootblowers - Do PM checks on system.	Boiler	POI 10			Occasional	NO
143	Operator's name	Operate boiler sootblower locally	Boiler		POP 78 & 79		Occasional	NO
144	Operator's name	Perform P.M.'s on Unit 3 Waterlances	Boiler		POP 115		Occasional	NO
145	Operator's name	Open bypass and Isolate any process control valve	Boiler				Occasional	NO
146	Operator's name	Throttle bypass and put any process control valve back in service	Boiler				Occasional	NO
147	Operator's name	Blowdown Boiler (Continues Blow-Down)	Boiler				Occasional	NO
148	Operator's name	Manually Operate Bled Steam Check Valves	Boiler	POI 37			Occasional	NO
149	Operator's name	Lungstrum air heaters. Add gear oil to drive assembly if required.	Boiler				Occasional	NO
150	Operator's name	Lungstrum air heaters. Add oil to top bearings.	Boiler				Occasional	NO

Task	Operator's Name	Tasks	System	POI	POP	Ref Mat	Frequency	Completed
151	Operator's name	Lungstrum air heaters. Add oil to bottom bearing.	Boiler				Occasional	NO
152	Operator's name	Start air heaters using air drive	Boiler				Occasional	NO
153	Operator's name	Sootblowers - Manually operate supply block valve.	Boiler				Rare	NO
154	Operator's name	Sootblowers - Manually Remove sootblower from Furnace	Boiler		POP 79		Rare	NO
155	Operator's name	Operate boiler drain valves for either fill or drain mode	Boiler	POI 1 & 2 & 3			Rare	NO
156	Operator's name	Operate boiler vent valve for either press or vent mode	Boiler				Rare	NO
157	Operator's name	Blowdown Boiler (Bottom Blow)	Boiler				Rare	NO
158	Operator's name	Air preheater steam coils. Locate and isolate leaking steam coils.	Boiler				Rare	NO
159	Operator's name	Air preheater steam coils. By-pass, manually adjust steam to coils.	Boiler				Rare	NO
160	Operator's name	Air heater condensate system. Prepare for service.	Boiler				Rare	NO
161	Operator's name	Air heater condensate system. Remove from service.	Boiler				Rare	NO
162	Operator's name	Seal air booster Fan. Put in service.	Boiler				Rare	NO
163	Operator's name	Seal air booster Fan. Remove from service.	Boiler				Rare	NO
164	Operator's name	Air heater washing. Prepare for washing.	Boiler		POP 26		Rare	NO
165	Operator's name	Air heater washing. Perform wash.	Boiler		POP 26		Rare	NO
166	Operator's name	Air heater washing. Return to normal service.	Boiler		POP 26		Rare	NO
167	Operator's name	Prepare / Monitor start up of F.D. Fans locally	Boiler				Rare	NO
168	Operator's name	Place heating system in service	Boiler	POI 12			Rare	NO
169	Operator's name	Remove Heating system from service	Boiler				Rare	NO
170	Operator's name	Setting boiler safety valves	Boiler		POP 23 & 80		Rare	NO
171	Operator's name	Visually check hotwell level.	LP Feedwater				Often	NO
172	Operator's name	Prepare / Monitor start up of Condensate extraction pumps locally	LP Feedwater	POI 13	POP32		Occasional	NO
173	Operator's name	Maintain adequate cooling water to	LP Feedwater				Occasional	NO
174	Operator's name	Condensate extraction pumps. Maintain adequate seal water to	LP Feedwater				Occasional	NO
175	Operator's name	PM Checks - extraction pumps.	LP Feedwater				Occasional	NO

Task	Operator's Name	Tasks	System	POI	POP	Ref Mat	Frequency	Completed
176	Operator's name	Vacuum pumps. Backwash coolers.	LP Feedwater				Occasional	NO
177	Operator's name	Condensate extraction pumps. Remove from service.	LP Feedwater				Rare	NO
178	Operator's name	Condensate extraction pumps. Add oil to motor bearing.	LP Feedwater				Rare	NO
179	Operator's name	Condensate extraction pumps. Add oil to pump bearing.	LP Feedwater				Rare	NO
180	Operator's name	Vacuum pumps. Prepare for service. Air extraction pumps.	LP Feedwater				Rare	NO
181	Operator's name	Vacuum pumps. Remove from service.	LP Feedwater				Rare	NO
182	Operator's name	Vacuum pumps. Maintain proper seal water level manually if required.	LP Feedwater				Rare	NO
183	Operator's name	Prepare / monitor start up of L.P. drains pump	LP Feedwater				Rare	NO
184	Operator's name	Energize low pressure heaters water side locally	LP Feedwater				Rare	NO
185	Operator's name	Energize low pressure heaters on steam side locally	LP Feedwater				Rare	NO
186	Operator's name	De-energize low pressure heater water side	LP Feedwater				Rare	NO
187	Operator's name	De-energize low pressure heater steam side	LP Feedwater				Rare	NO
188	Operator's name	Energize Dearator water side	LP Feedwater				Rare	NO
189	Operator's name	De-energize Dearator water side	LP Feedwater				Rare	NO
190	Operator's name	Energize Dearator on steam side	LP Feedwater	POI-13			Rare	NO
191	Operator's name	De-energize Dearator on steam side	LP Feedwater				Rare	NO
192	Operator's name	Manually control hotwell level on control valve Failure.	LP Feedwater				Rare	NO
193	Operator's name	Manually control Dearator level on control valve Failure. Check for man	LP Feedwater				Rare	NO
194	Operator's name	Boiler feed pumps. Maintain proper oil level in reservoirs.	HP Feedwater				Often	NO
195	Operator's name	Boiler feed pumps. Rotate oil strainers.	HP Feedwater				Often	NO
196	Operator's name	Boiler feed pumps. Check oil flow to bearings.	HP Feedwater				Often	NO
197	Operator's name	Boiler feed pumps. Check individual bearing temperatures.	HP Feedwater				Often	NO
198	Operator's name	Boiler feed pumps - seal water tank. Check and adjust water level or float	HP Feedwater				Often	NO
199	Operator's name	Boiler feed pumps. Prepare for service.	HP Feedwater		POP 16		Occasional	NO
200	Operator's name	Boiler feed pumps. Remove from service.	HP Feedwater		POP 17		Occasional	NO

Task	Operator's Name	Tasks	System	POI	POP	Ref Mat	Frequency	Completed
201	Operator's name	Boiler feed pumps. Adjust cooling water to maintain proper oil	HP Feedwater				Occasional	NO
202	Operator's name	Boiler feed pumps. Check bearing vibration and reset vibration monitors	HP Feedwater				Occasional	NO
203	Operator's name	Boiler feed pumps. Adjust gland seal water (G.S.W.).	HP Feedwater	POI 14			Occasional	NO
204	Operator's name	Boiler feed pumps - Gland Seal Water strainers. Change and clean.	HP Feedwater				Occasional	NO
205	Operator's name	Boiler feed pumps - seal water tank. Prime pump if not pumping. Gland	HP Feedwater				Rare	NO
206	Operator's name	Prepare High Pressure Feedwater System for service i.e. Flood System.	HP Feedwater		POP 63		Rare	NO
207	Operator's name	Remove High Pressure Feedwater System from service.	HP Feedwater				Rare	NO
208	Operator's name	Boiler feed pumps. Install portable lube oil filter.	HP Feedwater				Rare	NO
209	Operator's name	Boiler feed pumps. Put portable lube oil filter in service.	HP Feedwater				Rare	NO
210	Operator's name	Boiler feed pumps. Remove portable lube oil filter from service.	HP Feedwater				Rare	NO
211	Operator's name	Boiler feed pumps. Clean portable lube oil filter.	HP Feedwater				Rare	NO
212	Operator's name	Boiler feed pumps. Open suction valve.	HP Feedwater				Rare	NO
213	Operator's name	Boiler feed pumps. Close suction valve.	HP Feedwater				Rare	NO
214	Operator's name	Boiler feed pumps. Manually operate discharge valve.	HP Feedwater				Rare	NO
215	Operator's name	Boiler feed pumps - Gland Seal Water pump. Prepare for service.	HP Feedwater	POI 14			Rare	NO
216	Operator's name	Boiler feed pumps - Gland Seal Water pump. Remove from service.	HP Feedwater				Rare	NO
217	Operator's name	Boiler feed pumps - Gland Seal Water supply. Operate extraction pump	HP Feedwater	POI 14			Rare	NO
218	Operator's name	Open extraction steam block valves to High Pressure heaters and deaerators.	HP Feedwater		POP 70		Rare	NO
219	Operator's name	Close extraction steam block valves to High Pressure heaters and	HP Feedwater		POP 70 & POP 71		Rare	NO
220	Operator's name	Energize high pressure heaters water side locally	HP Feedwater		POP70		Rare	NO
221	Operator's name	Energize high pressure heaters #4 and #5 (water side) locally	HP Feedwater		POP70		Rare	NO
222	Operator's name	Energize high pressure heater #6 (water side) locally	HP Feedwater		POP70		Rare	NO
223	Operator's name	Energize high pressure heaters 4 & 5 on steam side locally	HP Feedwater		POP 70		Rare	NO
224	Operator's name	Energize high pressure heater 6 on steam side locally	HP Feedwater		POP 70		Rare	NO
225	Operator's name	Prepare / Monitor start up of H.P. heater drains pump	HP Feedwater				Rare	NO

Task	Operator's Name	Tasks	System	POI	POP	Ref Mat	Frequency	Completed
226	Operator's name	De-energize H.P. heaters #4 & #5 water side	HP Feedwater				Rare	NO
227	Operator's name	De-energize H.P. heaters #4 & #5 steam side	HP Feedwater				Rare	NO
228	Operator's name	De-energize H.P. heaters #6 water side	HP Feedwater				Rare	NO
229	Operator's name	De-energize H.P. heaters #6 steam side	HP Feedwater				Rare	NO
230	Operator's name	Work Protection Permits. Isolate equipment per PC17A.	W.P. Code				Often	NO
231	Operator's name	Work Protection Permits. Remove isolation on surrendered permits.	W.P. Code				Often	NO
232	Operator's name	Work Protection Permits. Check PC2 Form.	W.P. Code				Occasional	NO
233	Operator's name	Work Protection Permits. Check PC17A.	W.P. Code				Occasional	NO
234	Operator's name	Work Protection Permits. Check PC14	W.P. Code				Occasional	NO
235	Operator's name	Work Protection Permits. Isolate equipment per PC14.	W.P. Code				Occasional	NO
236	Operator's name	Work Protection Permits. Operator administered - become prospective	W.P. Code				Occasional	NO
237	Operator's name	Work Protection Permits. Operator administered - be Permit Holder.	W.P. Code				Occasional	NO
238	Operator's name	Work Protection Permits. Operator administered - be Holder of Record.	W.P. Code				Occasional	NO
239	Operator's name	Work Protection Permits. Set up and remove equipment test conditions as	W.P. Code				Occasional	NO
240	Operator's name	Check Gas Turbine Oil Cooler Containment Dyke	Turbine & Condenser				Often	NO
241	Operator's name	Take Hourly readings on Turbine and Generator bearing temperatures.	Turbine & Condenser				Often	NO
242	Operator's name	Check Turbine and Generator bearing oil drains Hourly, for proper flow and	Turbine & Condenser				Often	NO
243	Operator's name	Inspect magnehelic gauges for water in steam seals.	Turbine & Condenser				Often	NO
244	Operator's name	Check exhaust Hood temperature and take corrective action if necessary.	Turbine & Condenser				Often	NO
245	Operator's name	Perform, prescribed local test of #3 main stop valves	Turbine & Condenser				Occasional	NO
246	Operator's name	Turbine steam seals. Manually control steam seal when required.	Turbine & Condenser				Occasional	NO
247	Operator's name	Clean exhaust Hood spray strainers.	Turbine & Condenser				Occasional	NO
248	Operator's name	Start gas turbine set	Turbine & Condenser		POP 64		Occasional	NO
249	Operator's name	Stop gas turbine set	Turbine & Condenser		POP 76		Occasional	NO
250	Operator's name	Energize steam seal regulator on Stage 1	Turbine & Condenser				Rare	NO

Task	Operator's Name	Tasks	System	POI	POP	Ref Mat	Frequency	Completed
251	Operator's name	Energize steam seal regulator on Units 3	Turbine & Condenser				Rare	NO
252	Operator's name	Prepare / monitor start-up of steam seal exhaust system, units 1 & 2	Turbine & Condenser				Rare	NO
253	Operator's name	Prepare / monitor start - up of steam seal exhaust system, Unit 3 locally	Turbine & Condenser				Rare	NO
254	Operator's name	Perform prescribed overspeed test (local) during shut down on #3	Turbine & Condenser	POI 30	POP 59		Rare	NO
255	Operator's name	Operate turbine turning gear engaging system locally	Turbine & Condenser				Rare	NO
256	Operator's name	Operate turbine drains for either on line or off line mode	Turbine & Condenser		POP 6 POP 9		Rare	NO
257	Operator's name	Turbine steam seals - put gland seal exhauster in service.	Turbine & Condenser				Rare	NO
258	Operator's name	Start up synchronous condenser lube oil system	Turbine & Condenser				Rare	NO
259	Operator's name	Start synchronous condenser set Unit 3	Turbine & Condenser		POP 68		Rare	NO
260	Operator's name	Stop synchronous condenser set Unit 3	Turbine & Condenser		POP 69		Rare	NO
261	Operator's name	Perform duties assoc. with emerg. shut down of Turbines #1, 2, & 3.	Turbine & Condenser				Rare	NO
262	Operator's name	Take weekly recordings of rotary air compressor meters and gauges. Log	Air Compression				Often	NO
263	Operator's name	Service air receivers. Maintain adequate pressure.	Air Compression				Occasional	NO
264	Operator's name	Service air receivers. Drain condensate.	Air Compression				Occasional	NO
265	Operator's name	Instrument air receivers. Maintain adequate pressure.	Air Compression				Occasional	NO
266	Operator's name	Instrument air receivers. Drain condensate.	Air Compression				Occasional	NO
267	Operator's name	Rotary Air Compressors - Put in service.	Air Compression				Occasional	NO
268	Operator's name	Rotary Air Compressors - Remove from service.	Air Compression				Occasional	NO
269	Operator's name	Instrument air dryers. Put in service.	Air Compression				Rare	NO
270	Operator's name	Instrument air dryers. Remove from service.	Air Compression				Rare	NO
271	Operator's name	Instrument air flow meters. Put in service.	Air Compression				Rare	NO
272	Operator's name	Instrument air flow meters. Remove from service.	Air Compression				Rare	NO
273	Operator's name	Air dryer pre-filters. Put in service.	Air Compression				Rare	NO
274	Operator's name	Air dryer pre-filters. Remove from service.	Air Compression				Rare	NO
275	Operator's name	Air dryer after-filters. Put in service.	Air Compression				Rare	NO

Task	Operator's Name	Tasks	System	POI	POP	Ref Mat	Frequency	Completed
276	Operator's name	Air dryer after-filters. Remove from service.	Air Compression				Rare	NO
277	Operator's name	Ignitor air booster Fan. Put in service.	Air Compression				Rare	NO
278	Operator's name	Ignitor air booster Fan. Remove from service.	Air Compression				Rare	NO
279	Operator's name	Energize scanner air system on Stage 1 boilers	Air Compression				Rare	NO
280	Operator's name	Energize ignitor air system on Stage 1 boilers	Air Compression				Rare	NO
281	Operator's name	Energize scanner air system on Unit 3 boiler	Air Compression				Rare	NO
282	Operator's name	Hourly readings on generator seal oil pressure at both generator ends.	Generator Shaft Sealing, Lube Oil &				Often	NO
283	Operator's name	Check main lube oil pressure at front standard.	Generator Shaft Sealing, Lube Oil &				Often	NO
284	Operator's name	Main lube oil tank - all units. Monitor tank level.	Generator Shaft Sealing, Lube Oil &				Often	NO
285	Operator's name	Main lube oil tank -all units. Check lube oil pump pressures.	Generator Shaft Sealing, Lube Oil &				Often	NO
286	Operator's name	Inspect front standard housing for abnormal conditions.	Generator Shaft Sealing, Lube Oil &				Often	NO
287	Operator's name	Hydraulic set - Unit 1 and 2. Check primary filter.	Generator Shaft Sealing, Lube Oil &				Often	NO
288	Operator's name	Hydraulic set - Unit 1 and 2. Check for leaks.	Generator Shaft Sealing, Lube Oil &				Often	NO
289	Operator's name	Stop Lube oil Purifier for Unit 3	Generator Shaft Sealing, Lube Oil &		POP 8		Occasional	NO
290	Operator's name	Start up Lube oil Purifier for unit 3	Generator Shaft Sealing, Lube Oil &		POP 014		Occasional	NO
291	Operator's name	Lube oil purifier for Unit 3. Empty waste barrel when required.	Generator Shaft Sealing, Lube Oil &		POP 014		Occasional	NO
292	Operator's name	Perform prescribed local test of #3 lube oil system	Generator Shaft Sealing, Lube Oil &	POI 36			Occasional	NO
293	Operator's name	Seal Oil Vacuum Pumps. Replace contaminated oil with set in service.	Generator Shaft Sealing, Lube Oil &				Occasional	NO
294	Operator's name	Put Lube oil tank vapor extractor in service All units.	Generator Shaft Sealing, Lube Oil &				Occasional	NO
295	Operator's name	Lube oil tank vapor extractor - all units. Remove from service.	Generator Shaft Sealing, Lube Oil &				Occasional	NO
296	Operator's name	Lube oil temperature - all units. Adjust temperature and set.	Generator Shaft Sealing, Lube Oil &				Occasional	NO
297	Operator's name	Change over turbine lube oil strainers for Unit 3.	Generator Shaft Sealing, Lube Oil &	POI 18			Occasional	NO
298	Operator's name	Change over Relay Oil Filters for Unit 3.	Generator Shaft Sealing, Lube Oil &		POP 142		Occasional	NO
299	Operator's name	Main lube oil tank - all units. Remove DC pump from service.	Generator Shaft Sealing, Lube Oil &				Occasional	NO
300	Operator's name	Hydrogen seal oil sets, All units. Put vacuum pump in service.	Generator Shaft Sealing, Lube Oil &		POP 10		Occasional	NO

Task	Operator's Name	Tasks	System	POI	POP	Ref Mat	Frequency	Completed
301	Operator's name	Hydrogen seal oil sets. Remove vacuum pump from service.	Generator Shaft Sealing, Lube Oil &		POP 10		Occasional	NO
302	Operator's name	Hydrogen Seal oil sets. Maintain proper oil level in vacuum pump.	Generator Shaft Sealing, Lube Oil &				Occasional	NO
303	Operator's name	Bowser oil conditioner. Operate vapor extractor.	Generator Shaft Sealing, Lube Oil &				Occasional	NO
304	Operator's name	Test auto start on stand-by turbine A.C.Lube Oil Pump	Generator Shaft Sealing, Lube Oil &				Occasional	NO
305	Operator's name	Test auto start on stand-by turbine D.C. Lube oil pump Unit 1 & 2	Generator Shaft Sealing, Lube Oil &				Occasional	NO
306	Operator's name	Test auto start on stand-by turbine hydraulic pump Unit 1 & 2	Generator Shaft Sealing, Lube Oil &				Occasional	NO
307	Operator's name	Test auto start on stand-by D.C. flushing Oil Pump Unit 3	Generator Shaft Sealing, Lube Oil &				Occasional	NO
308	Operator's name	Inspect brush gear for oil contamination.	Generator Shaft Sealing, Lube Oil &				Occasional	NO
309	Operator's name	Hydraulic sets. Sage 1 Replace reservoir moisture dessicant, if	Generator Shaft Sealing, Lube Oil &				Occasional	NO
310	Operator's name	Hydraulic sets Stage 1. Check AFS system.	Generator Shaft Sealing, Lube Oil &				Occasional	NO
311	Operator's name	Hydraulic sets Stage 1. Put AFS system in service.	Generator Shaft Sealing, Lube Oil &				Occasional	NO
312	Operator's name	Hydraulic sets Stage 1. Remove AFS system from service.	Generator Shaft Sealing, Lube Oil &				Occasional	NO
313	Operator's name	Hydraulic sets Stage 1. Bypass AFS system.	Generator Shaft Sealing, Lube Oil &				Occasional	NO
314	Operator's name	Hydraulic sets Stage 1. Add oil to reservoir.	Generator Shaft Sealing, Lube Oil &		POP 28		Occasional	NO
315	Operator's name	Hydraulic sets - Stage 1. Check compartment heater operation.	Generator Shaft Sealing, Lube Oil &				Occasional	NO
316	Operator's name	Hydraulic sets Stage 1. Maintain oil temperature.	Generator Shaft Sealing, Lube Oil &				Occasional	NO
317	Operator's name	Bowser oil conditioner. Maintain proper seal water level.	Generator Shaft Sealing, Lube Oil &				Occasional	NO
318	Operator's name	Bowser oil conditioner. Maintain proper operating level.	Generator Shaft Sealing, Lube Oil &				Occasional	NO
319	Operator's name	Disassemble Unit 1 & 2 Centrifuge for cleaning	Generator Shaft Sealing, Lube Oil &		POP 037		Rare	NO
320	Operator's name	Assemble Unit 1 & 2 Centrifuge after cleaning	Generator Shaft Sealing, Lube Oil &				Rare	NO
321	Operator's name	Lube oil purifier Unit 3. Disassemble for cleaning.	Generator Shaft Sealing, Lube Oil &		POP 014		Rare	NO
322	Operator's name	Lube oil purifier Unit 3. Clean unit.	Generator Shaft Sealing, Lube Oil &		POP 014		Rare	NO
323	Operator's name	Lube oil purifier - Unit 3. Re-assemble after cleaning.	Generator Shaft Sealing, Lube Oil &		POP 014		Rare	NO
324	Operator's name	Manually control Generator seal oil pressure differential on regulator	Generator Shaft Sealing, Lube Oil &				Rare	NO
325	Operator's name	Bypass Generator seal oil float trap on high level.	Generator Shaft Sealing, Lube Oil &		POP 29		Rare	NO

Task	Operator's Name	Tasks	System	POI	POP	Ref Mat	Frequency	Completed
326	Operator's name	Drain generator leak detectors if oil appears in sight glass or an alarm is	Generator Shaft Sealing, Lube Oil &				Rare	NO
327	Operator's name	Change Over Turbine lube oil strainers Stage 1.	Generator Shaft Sealing, Lube Oil &				Rare	NO
328	Operator's name	Replace Turbine lube oil strainers Stage 1.	Generator Shaft Sealing, Lube Oil &				Rare	NO
329	Operator's name	Clean Turbine lube oil strainers Unit 3.	Generator Shaft Sealing, Lube Oil &	POI 18			Rare	NO
330	Operator's name	Main lube oil tanks Stage 1. Drain vapor extractor catch tanks.	Generator Shaft Sealing, Lube Oil &				Rare	NO
331	Operator's name	Main lube oil tanks Stage 1. Clean vapor extractor catch tank.	Generator Shaft Sealing, Lube Oil &				Rare	NO
332	Operator's name	Put Hydrogen seal oil (sets) AC pumps in service.	Generator Shaft Sealing, Lube Oil &		POP 10		Rare	NO
333	Operator's name	Remove Hydrogen seal oil (sets) AC pumps from service.	Generator Shaft Sealing, Lube Oil &		POP 10		Rare	NO
334	Operator's name	Put Hydrogen seal oil (sets) DC pumps in service.	Generator Shaft Sealing, Lube Oil &		POP 10		Rare	NO
335	Operator's name	Remove Hydrogen seal oil (sets) DC pumps from service.	Generator Shaft Sealing, Lube Oil &		POP 10		Rare	NO
336	Operator's name	Hydrogen Seal Oil Tank. Manually operate oil return block valve to tank.	Generator Shaft Sealing, Lube Oil &				Rare	NO
337	Operator's name	Change over and/or clean Hydrogen Seal oil system filters for all units.	Generator Shaft Sealing, Lube Oil &				Rare	NO
338	Operator's name	Hydrogen Seal oil set. Provide alternate supply if set Fails. Unit #3	Generator Shaft Sealing, Lube Oil &		POP 35		Rare	NO
339	Operator's name	Prepare Hydraulic set for service on Unit 1 and 2.	Generator Shaft Sealing, Lube Oil &		POP 75		Rare	NO
340	Operator's name	Put Bowser oil conditioner In service on Unit 1 and 2.	Generator Shaft Sealing, Lube Oil &		POP 027		Rare	NO
341	Operator's name	Remove Bowser oil conditioner from service on Unit 1 and 2.	Generator Shaft Sealing, Lube Oil &				Rare	NO
342	Operator's name	Bowser oil conditioner Unit 1 and 2. Clean/replace filters.	Generator Shaft Sealing, Lube Oil &				Rare	NO
343	Operator's name	Bowser oil conditioner - Unit 1 and 2. Clean trays.	Generator Shaft Sealing, Lube Oil &				Rare	NO
344	Operator's name	Air de-training tank vent booster Fan. Put in service.	Generator Shaft Sealing, Lube Oil &				Rare	NO
345	Operator's name	Air de-training tank vent booster Fan. Bypass and remove from service.	Generator Shaft Sealing, Lube Oil &				Rare	NO
346	Operator's name	Air de-training tank vent booster Fan. Drain casing on water build-up.	Generator Shaft Sealing, Lube Oil &				Rare	NO
347	Operator's name	Switch Main Lube Oil Supply from Generator Bearings, to Generator	Generator Shaft Sealing, Lube Oil &		POP 154		Rare	NO
348	Operator's name	Take Hourly readings on Generator Hydrogen gas system.	H2 & CO2				Often	NO
349	Operator's name	Remove Hydrogen Gas dryers from service.	H2 & CO2		POP 30 & 31		Often	NO
350	Operator's name	Regenerate Hydrogen Gas dryer(s) desiccant.	H2 & CO2		POP 30 & 31		Often	NO

Task	Operator's Name	Tasks	System	POI	POP	Ref Mat	Frequency	Completed
351	Operator's name	Put Hydrogen Gas dryers in service.	H2 & CO2		POP 30 & 31		Often	NO
352	Operator's name	Increase generator Hydrogen purity on Unit 1 and 2 while online.	H2 & CO2				Occasional	NO
353	Operator's name	Increase Hydrogen gas pressure in generator to normal operating	H2 & CO2		POP 114		Occasional	NO
354	Operator's name	Adjust gas flow through Hydrogen panel analyzers and differential	H2 & CO2				Occasional	NO
355	Operator's name	Adjust Hydrogen Panel Purity Meter and gas flow on Unit 3.	H2 & CO2				Occasional	NO
356	Operator's name	Hydrogen Panel - Unit 3. Adjust and set Hydrogen cooling water	H2 & CO2				Occasional	NO
357	Operator's name	Hydrogen Shack, Purge Hydrogen headers with CO2	H2 & CO2				Occasional	NO
358	Operator's name	Hydrogen Shack, Pressurize Hydrogen headers.	H2 & CO2				Occasional	NO
359	Operator's name	Hydrogen Shack, Put Hydrogen header in service to plant.	H2 & CO2				Occasional	NO
360	Operator's name	Hydrogen Shack, Alternate between Hydrogen headers.	H2 & CO2				Occasional	NO
361	Operator's name	Hydrogen Shack, Adjust Hydrogen supply regulators.	H2 & CO2				Occasional	NO
362	Operator's name	Hydrogen Shack, Carbon Dioxide system. Adjust CO2 supply regulator.	H2 & CO2				Occasional	NO
363	Operator's name	Hydrogen Shack, Carbon Dioxide system. Pressurize CO2 headers.	H2 & CO2				Occasional	NO
364	Operator's name	Hydrogen Shack, Carbon Dioxide system. Put CO2 header in service to	H2 & CO2				Occasional	NO
365	Operator's name	Hydrogen Shack, Take monthly bottle inventory.	H2 & CO2				Occasional	NO
366	Operator's name	Hydrogen Shack, Change out damaged or leaking pigtails.	H2 & CO2				Rare	NO
367	Operator's name	Hydrogen Shack, Replace empty bottles in event of an emergency.	H2 & CO2				Rare	NO
368	Operator's name	Hydrogen Shack, CO2 system. Change out damaged or leaking	H2 & CO2				Rare	NO
369	Operator's name	Hydrogen Shack, CO2 System. Replace empty bottles In event of an	H2 & CO2				Rare	NO
370	Operator's name	Purge air from generator with CO2. Stage 1.	H2 & CO2		POP 12		Rare	NO
371	Operator's name	Purge CO2 from generator with air. Stage 1.	H2 & CO2		POP 12		Rare	NO
372	Operator's name	Remove air from generator and shut seal oil supply. Stage 1.	H2 & CO2		POP 12 & 33		Rare	NO
373	Operator's name	Pressurize generator with air and establish seals. Stage 1.	H2 & CO2		POP 13		Rare	NO
374	Operator's name	Purge air from generator with CO2. Stage 2.	H2 & CO2		POP 114		Rare	NO
375	Operator's name	Purge CO2 from generator with Hydrogen gas. Stage 2.	H2 & CO2		POP 114		Rare	NO

Task	Operator's Name	Tasks	System	POI	POP	Ref Mat	Frequency	Completed
376	Operator's name	Replace Hydrogen panel moisture desiccant if necessary all units.	H2 & CO2				Rare	NO
377	Operator's name	Check for Hydrogen Leaks (Snoop) All units	H2 & CO2				Rare	NO
378	Operator's name	Call up Alarm review points removed from scan and points removed from	Unit Control Board				Often	NO
379	Operator's name	Call up all alarm review points removed from scan and points	Unit Control Board				Often	NO
380	Operator's name	Acknowledge and monitor system points when they reach alarm status.	Unit Control Board				Often	NO
381	Operator's name	Adjust boiler combustion controls as required	Unit Control Board				Often	NO
382	Operator's name	Manual voltage regulation to automatic voltage regulation	Unit Control Board				Often	NO
383	Operator's name	Test turbine main stop valve Unit 1 & 2	Unit Control Board				Often	NO
384	Operator's name	Test turbine main stop valves Unit 3	Unit Control Board	POI 24			Often	NO
385	Operator's name	Test turbine reheat stop and intercept control valve Unit 1 & 2	Unit Control Board	POI 39			Often	NO
386	Operator's name	Test turbine reheat stop and intercept control valves Unit 3	Unit Control Board	POI 38			Often	NO
387	Operator's name	Test turbine emergency trip system (electrical and Mechanical lock-out)	Unit Control Board				Often	NO
388	Operator's name	Place boiler master combustion control system in auto (Unit 1 & 2)	Unit Control Board				Often	NO
389	Operator's name	Remove boiler master combustion control system from auto (Stage 1)	Unit Control Board				Often	NO
390	Operator's name	Place boiler elevation (s) air flow control in auto (Unit 3)	Unit Control Board				Often	NO
391	Operator's name	Place boiler sootblower system in service Unit 1 & 2	Unit Control Board				Often	NO
392	Operator's name	Place boiler sootblower system in service Unit 3	Unit Control Board				Often	NO
393	Operator's name	Remove boiler elevation (s) air flow control from auto (Unit 3)	Unit Control Board				Often	NO
394	Operator's name	Reducing Turbine load	Unit Control Board				Often	NO
395	Operator's name	Place boiler elevation(s) fuel flow control in auto (Unit 3)	Unit Control Board				Often	NO
396	Operator's name	Remove boiler elevation (s) fuel flow control from auto (Unit 3)	Unit Control Board				Often	NO
397	Operator's name	Place boiler elevation (s) combustion control masters in auto (Unit 3)	Unit Control Board				Often	NO
398	Operator's name	Energize boiler sootblowing systems	Unit Control Board		POP 116		Often	NO
399	Operator's name	Place boiler master combustion control system in auto (Unit 3)	Unit Control Board				Often	NO
400	Operator's name	Transfer turbine load limit control to speed load control Unit 1 & 2	Unit Control Board				Often	NO

Task	Operator's Name	Tasks	System	POI	POP	Ref Mat	Frequency	Completed
401	Operator's name	Transfer turbine speed load control to load limit control Unit 1 & 2	Unit Control Board				Often	NO
402	Operator's name	Transfer turbine load limit control to speed load control Unit 3	Unit Control Board				Often	NO
403	Operator's name	Transfer turbine speed load control to load limit control Unit 3	Unit Control Board				Often	NO
404	Operator's name	Remove boiler master combustion control system from auto Unit 3	Unit Control Board				Often	NO
405	Operator's name	Place main steam temperature control in auto Unit 1 & 2	Unit Control Board				Often	NO
406	Operator's name	Place main steam temperature control in auto Unit 3	Unit Control Board				Often	NO
407	Operator's name	Adjust reheat steam master (burner tilts) steam temperature control as	Unit Control Board				Often	NO
408	Operator's name	Place reheat system spray temperature control in auto Unit 3	Unit Control Board				Often	NO
409	Operator's name	Loading turbine	Unit Control Board	POI 41			Often	NO
410	Operator's name	Perform Full Load Test Run	Unit Control Board				Often	NO
411	Operator's name	Perform Weekly Turbine Tests	Unit Control Board				Often	NO
412	Operator's name	Start General Service Cooling Water Pump.	Unit Control Board		POP 139		Occasional	NO
413	Operator's name	Place hotwell level control in auto (Unit 1&2)	Unit Control Board				Occasional	NO
414	Operator's name	Place hotwell level control in auto (Unit 3)	Unit Control Board				Occasional	NO
415	Operator's name	Fill turbine generator (T.G.) cooling water head tank (Unit 1&2)	Unit Control Board				Occasional	NO
416	Operator's name	Place turbine Generator (T.G.) cooling water head tank level control in auto	Unit Control Board				Occasional	NO
417	Operator's name	Start Turbine generator (T.G.) cooling water pump.	Unit Control Board		POP 140		Occasional	NO
418	Operator's name	Place stand-by turbine generator (T.G.) cooling water Pump in Auto	Unit Control Board				Occasional	NO
419	Operator's name	Stop turbine Generator (T.G.) cooling water pump	Unit Control Board				Occasional	NO
420	Operator's name	Place Hydrogen temperature control in auto (Unit 1&2)	Unit Control Board				Occasional	NO
421	Operator's name	Start general service cooling water pump (Unit 3)	Unit Control Board		POP 139		Occasional	NO
422	Operator's name	Place stand-by general service cooling water pump in auto (Unit 3)	Unit Control Board				Occasional	NO
423	Operator's name	Stop general service cooling water pump	Unit Control Board				Occasional	NO
424	Operator's name	Start Turbine D.C. Lube Oil pump (Unit 1&2)	Unit Control Board				Occasional	NO
425	Operator's name	Open Condensate Polisher Control Valve	Unit Control Board		POP 53		Occasional	NO

Task	Operator's Name	Tasks	System	POI	POP	Ref Mat	Frequency	Completed
426	Operator's name	Close Condensate Polisher Control Valve	Unit Control Board		POP 53		Occasional	NO
427	Operator's name	Start Condensate Extraction Pump	Unit Control Board		POP 32 & 15		Occasional	NO
428	Operator's name	Place stopped condensate extraction pump in stand-by / auto	Unit Control Board				Occasional	NO
429	Operator's name	Stop condensate extraction pump	Unit Control Board				Occasional	NO
430	Operator's name	Fill deaerator with condensate extraction pump	Unit Control Board		POP 03 & 13		Occasional	NO
431	Operator's name	Place Turbine Jacking Oil Pump in Auto (Unit 3)	Unit Control Board				Occasional	NO
432	Operator's name	Start Turbine D.C. Flushing Oil Pump (Unit 3)	Unit Control Board				Occasional	NO
433	Operator's name	Monitor boiler metal temperatures during start up	Unit Control Board				Occasional	NO
434	Operator's name	Sootblowers - Manually Energize System on units 1 & 2	Unit Control Board				Occasional	NO
435	Operator's name	Place air heater header steam control in auto >1200 kpa	Unit Control Board				Occasional	NO
436	Operator's name	Place atomizing steam header control in auto Unit 1 & 2	Unit Control Board				Occasional	NO
437	Operator's name	Place boiler auxiliary steam control in auto Unit 1 & 2	Unit Control Board				Occasional	NO
438	Operator's name	Increase / decrease boiler pressure with DCS load demand Computer	Unit Control Board				Occasional	NO
439	Operator's name	Increase / decrease rate of boiler pressure change with DCS load	Unit Control Board				Occasional	NO
440	Operator's name	Place auxiliary steam master in auto (Stage 1)	Unit Control Board				Occasional	NO
441	Operator's name	Place auxiliary steam flow Master in Auto (Stage 1)	Unit Control Board				Occasional	NO
442	Operator's name	Open exhaust Hood sprays (Stage 1)	Unit Control Board				Occasional	NO
443	Operator's name	Close exhaust Hood sprays Unit 1 & 2	Unit Control Board				Occasional	NO
444	Operator's name	Raise vacuum	Unit Control Board				Occasional	NO
445	Operator's name	Start vacuum pump (s) and raise vacuum	Unit Control Board				Occasional	NO
446	Operator's name	Stop vacuum pump (s)	Unit Control Board				Occasional	NO
447	Operator's name	Stop Light Oil ignitors (Units 1 & 2)	Unit Control Board				Occasional	NO
448	Operator's name	Establish Heavy Oil firing permissives (Units 1&2)	Unit Control Board				Occasional	NO
449	Operator's name	Establish Heavy Oil firing permissives (Unit 3)	Unit Control Board				Occasional	NO
450	Operator's name	Place atomizing steam control in auto (Unit 1 & 2)	Unit Control Board				Occasional	NO

Task	Operator's Name	Tasks	System	POI	POP	Ref Mat	Frequency	Completed
451	Operator's name	Test turbine vacuum trip	Unit Control Board				Occasional	NO
452	Operator's name	Place boiler air flow master in auto (Unit 1 & 2)	Unit Control Board				Occasional	NO
453	Operator's name	Remove boiler air flow master from auto (Units 1 & 2)	Unit Control Board				Occasional	NO
454	Operator's name	Place boiler fuel flow control in auto (Units 1 & 2)	Unit Control Board				Occasional	NO
455	Operator's name	Remove boiler fuel flow control from auto (Unit 1 & 2)	Unit Control Board				Occasional	NO
456	Operator's name	Open elevation oil trip valves (Unit 3)	Unit Control Board		POP 46		Occasional	NO
457	Operator's name	Close elevation oil trip valves (Unit 3)	Unit Control Board		POP 46		Occasional	NO
458	Operator's name	Fire boiler with Heavy Oil burner (s) (Unit 3)	Unit Control Board		POP 46		Occasional	NO
459	Operator's name	Stop Heavy Oil burner (s)	Unit Control Board				Occasional	NO
460	Operator's name	Place automatic voltage regulator in service	Unit Control Board				Occasional	NO
461	Operator's name	Calling up system graphics on DCS system monitors Unit 3	Unit Control Board				Occasional	NO
462	Operator's name	Trending system points on DCS system monitors and copying on	Unit Control Board				Occasional	NO
463	Operator's name	Trending system points on DCS system monitors and printers Unit 3	Unit Control Board				Occasional	NO
464	Operator's name	Conduct HSR of system points on DCS system and copy printers Unit	Unit Control Board				Occasional	NO
465	Operator's name	Adjust system voltages (230kv) as required by E.C.C.	Unit Control Board				Occasional	NO
466	Operator's name	Red tag equipment listed on RED TAG graphic of (DCS) System Unit 1	Unit Control Board				Occasional	NO
467	Operator's name	Place Turbine Lube Oil Temperature Control in Auto (Unit 3)	Unit Control Board				Occasional	NO
468	Operator's name	Place main feedwater valve in auto	Unit Control Board		POP 4		Occasional	NO
469	Operator's name	Adjust boiler drum level control as required	Unit Control Board				Occasional	NO
470	Operator's name	Place boiler feedwater control in auto (Unit 1 & 2)	Unit Control Board		POP 4 & 5		Occasional	NO
471	Operator's name	Remove boiler feedwater control from auto (Unit1 & 2)	Unit Control Board				Occasional	NO
472	Operator's name	Place boiler feedwater control in auto (Unit 3)	Unit Control Board				Occasional	NO
473	Operator's name	Remove boiler feedwater control from auto (Unit 3)	Unit Control Board				Occasional	NO
474	Operator's name	Start Light Oil pump	Unit Control Board		POP 55		Occasional	NO
475	Operator's name	Place stand-by Light Oil pump in auto	Unit Control Board		POP 55		Occasional	NO

Task	Operator's Name	Tasks	System	POI	POP	Ref Mat	Frequency	Completed
476	Operator's name	Stop Light Oil pump	Unit Control Board				Occasional	NO
477	Operator's name	Adjust Heavy Oil temperature control for oil set as required (Unit 1 & 2)	Unit Control Board		POP 40		Occasional	NO
478	Operator's name	Place Heavy Oil temperature control in auto (Unit 1 & 2)	Unit Control Board		POP 49		Occasional	NO
479	Operator's name	Place Heavy Oil temperature control in auto (Unit 3)	Unit Control Board		POP 49		Occasional	NO
480	Operator's name	Adjust Fuel (oil) Additive ratio as required (Unit 1 & 2)	Unit Control Board				Occasional	NO
481	Operator's name	Open Light Oil trip valve	Unit Control Board		POP 43		Occasional	NO
482	Operator's name	Surplus Hotwell water / condensate to high level tank (s) of reserve	Unit Control Board				Occasional	NO
483	Operator's name	Open deaerator (D.A.) recirculation valve to hotwell (Unit 3)	Unit Control Board				Occasional	NO
484	Operator's name	Close deaerator (D.A.) recirculation valve to hotwell (Unit 3)	Unit Control Board				Occasional	NO
485	Operator's name	Open deaerator (D.A.) run down valve to low level tank of R.F.W. system or	Unit Control Board				Occasional	NO
486	Operator's name	Place boiler forced draft Fan air inlet damper control in auto under control	Unit Control Board				Occasional	NO
487	Operator's name	Place boiler forced draft Fan discharge pressure control in auto	Unit Control Board				Occasional	NO
488	Operator's name	Bias boiler forced draft Fan inlet damper control as required (Units	Unit Control Board				Occasional	NO
489	Operator's name	Bias boiler forced draft Fan inlet damper control as required (Unit 3)	Unit Control Board				Occasional	NO
490	Operator's name	Place boiler excess air control in auto (Units 1&2)	Unit Control Board				Occasional	NO
491	Operator's name	Place boiler excess air control in auto (Unit 3)	Unit Control Board				Occasional	NO
492	Operator's name	Adjust boiler feedpump gland seal water as required (Units 1&2)	Unit Control Board	POI 14	POP 16		Occasional	NO
493	Operator's name	Place boiler feed pump gland seal water in auto (Units 1&2)	Unit Control Board	POI 14	POP 16		Occasional	NO
494	Operator's name	Start boiler feed pump emergency gland seal water Pump	Unit Control Board		POP 16		Occasional	NO
495	Operator's name	Stop boiler feed pump emergency gland seal water Pump	Unit Control Board				Occasional	NO
496	Operator's name	Start boiler feed pump	Unit Control Board		POP 16		Occasional	NO
497	Operator's name	Stop boiler feed pump	Unit Control Board		POP 17		Occasional	NO
498	Operator's name	Start Boiler ignitor air Fan (Units 1&2)	Unit Control Board				Rare	NO
499	Operator's name	Stop boiler ignitor air Fan (Unit 3)	Unit Control Board				Rare	NO
500	Operator's name	Start Boiler Scanner Fans / blowers (Unit 3)	Unit Control Board				Rare	NO

Task	Operator's Name	Tasks	System	POI	POP	Ref Mat	Frequency	Completed
501	Operator's name	Stop boiler scanner Fans / blowers (Units 1 & 2)	Unit Control Board				Rare	NO
502	Operator's name	Establish boiler feed pump gland seal water (Unit 3)	Unit Control Board	POI 14			Rare	NO
503	Operator's name	Flood high pressure feedwater (HFW) system	Unit Control Board		POP 70		Rare	NO
504	Operator's name	Start Turbine Turning Gear (Unit 1 & 2)	Unit Control Board				Rare	NO
505	Operator's name	Start Turbine Turning Gear (Unit 3)	Unit Control Board				Rare	NO
506	Operator's name	Stop Turbine Turning Gear (Units 1 & 2)	Unit Control Board				Rare	NO
507	Operator's name	Place Turbine Turning gear in Auto Start (Unit 3)	Unit Control Board				Rare	NO
508	Operator's name	Start Turbine Hydraulic Pump (Unit 1&2)	Unit Control Board		POP 75		Rare	NO
509	Operator's name	Place stand-by Hydraulic pump in auto (Unit 1&2)	Unit Control Board		POP 75		Rare	NO
510	Operator's name	Stop Turbine Hydraulic Pump (Unit 1&2)	Unit Control Board				Rare	NO
511	Operator's name	Place deaerator level control in auto (Unit 1&2)	Unit Control Board				Rare	NO
512	Operator's name	Place deaerator level control in auto (Unit 3)	Unit Control Board				Rare	NO
513	Operator's name	Open low load feedwater isolator	Unit Control Board				Rare	NO
514	Operator's name	Close low load feedwater isolator	Unit Control Board				Rare	NO
515	Operator's name	Place low load feedwater valve in auto (Unit 1&2)	Unit Control Board		POP 4		Rare	NO
516	Operator's name	Open main feedwater isolator	Unit Control Board				Rare	NO
517	Operator's name	Close main feedwater isolator	Unit Control Board				Rare	NO
518	Operator's name	Open economizer recirculation valve (Unit 3)	Unit Control Board				Rare	NO
519	Operator's name	Close economizer recirculation Valve (Unit 3)	Unit Control Board				Rare	NO
520	Operator's name	Establish purge permissives (Unit 1&2)	Unit Control Board				Rare	NO
521	Operator's name	Establish purge permissives (Unit 3)	Unit Control Board				Rare	NO
522	Operator's name	Start boiler purge (5 min)	Unit Control Board				Rare	NO
523	Operator's name	Start Heavy Oil Pump (Unit 1 & 2)	Unit Control Board		POP 49		Rare	NO
524	Operator's name	Start Heavy Oil pump (Unit 3)	Unit Control Board		POP 49		Rare	NO
525	Operator's name	Place stand-by Heavy Oil pump in auto	Unit Control Board		POP 49		Rare	NO

Task	Operator's Name	Tasks	System	POI	POP	Ref Mat	Frequency	Completed
526	Operator's name	Stop Heavy Oil Pump	Unit Control Board		POP 49		Rare	NO
527	Operator's name	Prepare boiler for firing when purge complete (Unit 1 & 2)	Unit Control Board		POP 40		Rare	NO
528	Operator's name	Prepare boiler for firing when purge complete (Unit 3)	Unit Control Board	POI 7			Rare	NO
529	Operator's name	Place auxiliary air damper control in auto when purge complete (Unit 1 & 2)	Unit Control Board				Rare	NO
530	Operator's name	Open boiler start-up vent	Unit Control Board				Rare	NO
531	Operator's name	Close boiler start-up vent (Unit 1 & 2)	Unit Control Board				Rare	NO
532	Operator's name	Open boiler drains	Unit Control Board				Rare	NO
533	Operator's name	Close boiler drains	Unit Control Board				Rare	NO
534	Operator's name	Place Turbine D.C. Flushing Oil Pump in Auto (Unit 3)	Unit Control Board				Rare	NO
535	Operator's name	Start Turbine Auxiliary Oil Pump (A.O.P.) (Unit 3)	Unit Control Board				Rare	NO
536	Operator's name	Stop Turbine Auxiliary Oil Pump (A.O.P.) (Unit 3)	Unit Control Board				Rare	NO
537	Operator's name	Fire boiler with Light Oil ignitors (Unit 1 & 2)	Unit Control Board		POP 43		Rare	NO
538	Operator's name	Start Turbine A.C. Flushing Oil Pump (Unit 3)	Unit Control Board				Rare	NO
539	Operator's name	Stop Turbine A.C. Flushing Oil Pump (Unit 3)	Unit Control Board				Rare	NO
540	Operator's name	Place Turbine A.C. Flushing Oil Pump in Auto (Unit 3)	Unit Control Board				Rare	NO
541	Operator's name	Start condenser circulating water (c.w.) pump	Unit Control Board	POI 22	POP 15		Rare	NO
542	Operator's name	Stop condenser circulating water (c.w.) pump	Unit Control Board				Rare	NO
543	Operator's name	Start turbine A.C. lube oil pump (Unit 1&2)	Unit Control Board				Rare	NO
544	Operator's name	Place stand-by turbine A.C. lube oil pump in auto (Unit 1&2)	Unit Control Board				Rare	NO
545	Operator's name	Stop turbine A.C. lube oil pump (Unit 1&2)	Unit Control Board				Rare	NO
546	Operator's name	Start Turbine Jacking Oil Pump (Unit 3)	Unit Control Board				Rare	NO
547	Operator's name	Stop Turbine Jacking Oil Pump (Unit 3)	Unit Control Board				Rare	NO
548	Operator's name	Open turbine main steam pipe drains	Unit Control Board	POI 8	POP 7		Rare	NO
549	Operator's name	Close turbine main steam pipe drains	Unit Control Board	POI 8	POP 7		Rare	NO
550	Operator's name	Open turbine drains	Unit Control Board	POI 8	POP 7		Rare	NO

Task	Operator's Name	Tasks	System	POI	POP	Ref Mat	Frequency	Completed
551	Operator's name	Close turbine drains	Unit Control Board	POI 8	POP 7		Rare	NO
552	Operator's name	Warm main steam line	Unit Control Board	POI 8	POP 7		Rare	NO
553	Operator's name	Open boiler stop valve pilot valve Unit 1 & 2	Unit Control Board		POP 7		Rare	NO
554	Operator's name	Close boiler stop valve pilot valve Unit 1 & 2	Unit Control Board		POP 7		Rare	NO
555	Operator's name	Open boiler stop valve Unit 1 & 2	Unit Control Board		POP 7		Rare	NO
556	Operator's name	Close boiler stop valve Unit 1 & 2	Unit Control Board		POP 7		Rare	NO
557	Operator's name	Open boiler stop valve bypass valve Unit #3	Unit Control Board				Rare	NO
558	Operator's name	Close boiler stop valve bypass valve Unit 3	Unit Control Board				Rare	NO
559	Operator's name	Open boiler stop valve Unit 3	Unit Control Board				Rare	NO
560	Operator's name	Close boiler stop valve Unit 3	Unit Control Board				Rare	NO
561	Operator's name	Preparation for turbine start-up Unit 1 & 2	Unit Control Board	POI 4	POP 6		Rare	NO
562	Operator's name	Open Heavy Oil trip valve	Unit Control Board		POP 40		Rare	NO
563	Operator's name	Close Heavy Oil trip valve	Unit Control Board				Rare	NO
564	Operator's name	Close vacuum breaker	Unit Control Board				Rare	NO
565	Operator's name	Open vacuum breaker	Unit Control Board				Rare	NO
566	Operator's name	Prewarm turbine on turning gear Unit 1 & 2	Unit Control Board	POI 4	POP 01		Rare	NO
567	Operator's name	Prewarm turbine on turning gear Unit 3	Unit Control Board	POI 5	POP 02		Rare	NO
568	Operator's name	Preparation for turbine roll-off Unit 1 & 2	Unit Control Board	POI 4	POP 7		Rare	NO
569	Operator's name	Preparation for turbine roll-off Unit 3	Unit Control Board				Rare	NO
570	Operator's name	Turbine roll-off and acceleration up to line speed Unit 1 & 2	Unit Control Board		POP 72		Rare	NO
571	Operator's name	Turbine roll-off and acceleration up to line speed Unit 3	Unit Control Board		POP 73		Rare	NO
572	Operator's name	Monitor turbine supervisory instrumentation (T.S.I.) during start-up	Unit Control Board				Rare	NO
573	Operator's name	Preparation for field flashing Unit 1 & 2	Unit Control Board	POI 4	POP 72		Rare	NO
574	Operator's name	Preparation for field flashing Unit 3	Unit Control Board		POP 73		Rare	NO
575	Operator's name	Manual operation of flashing field	Unit Control Board	POI 4	POP 72		Rare	NO

Task	Operator's Name	Tasks	System	POI	POP	Ref Mat	Frequency	Completed
576	Operator's name	Open field breaker	Unit Control Board				Rare	NO
577	Operator's name	Close field breaker	Unit Control Board	POI 4			Rare	NO
578	Operator's name	Open generator disconnects Unit # 1 & 2	Unit Control Board	POI 4			Rare	NO
579	Operator's name	Close generator disconnects Unit #3	Unit Control Board		POP 72		Rare	NO
580	Operator's name	Open generator line breakers Unit #1 & 2	Unit Control Board				Rare	NO
581	Operator's name	Close generator line breakers Unit #3	Unit Control Board	POI 5			Rare	NO
582	Operator's name	Synchronizing generator Unit 1 & 2	Unit Control Board		POP 62		Rare	NO
583	Operator's name	Synchronizing generator Unit 3	Unit Control Board	POI 5			Rare	NO
584	Operator's name	Transfer turbine from full arc to partial arc steam admission	Unit Control Board				Rare	NO
585	Operator's name	Transfer turbine from partial arc to full arc steam admission Unit 1 & 2	Unit Control Board				Rare	NO
586	Operator's name	Transfer from station service supply to unit service (30 mw)	Unit Control Board		POP 67		Rare	NO
587	Operator's name	Transfer from unit service supply to station service (30 mw)	Unit Control Board				Rare	NO
588	Operator's name	Place initial pressure regulator in service	Unit Control Board				Rare	NO
589	Operator's name	Remove initial pressure regulator from service	Unit Control Board				Rare	NO
590	Operator's name	Place vacuum unloader in service	Unit Control Board				Rare	NO
591	Operator's name	Remove vacuum unloader from service	Unit Control Board				Rare	NO
592	Operator's name	Change throttle pressure transmitters with DCS load demand computer	Unit Control Board				Rare	NO
593	Operator's name	Place DCS load demand computer in remote control mode for Turbine	Unit Control Board				Rare	NO
594	Operator's name	Taking generator off the line	Unit Control Board				Rare	NO
595	Operator's name	Shutting down turbine Unit 1 & 2	Unit Control Board		POP 45		Rare	NO
596	Operator's name	Shutting down turbine Unit 3	Unit Control Board		POP 44 & 45		Rare	NO
597	Operator's name	Test turbine overspeed trip Unit 1 & 2	Unit Control Board	POI 35			Rare	NO
598	Operator's name	Trip turbine with Master (emergency) trip	Unit Control Board	POI 30			Rare	NO
599	Operator's name	Reset turbine (Emergency) Master trip Unit 3	Unit Control Board				Rare	NO
600	Operator's name	Test boiler reheat relief valve (s)	Unit Control Board		POP 20		Rare	NO

Task	Operator's Name	Tasks	System	POI	POP	Ref Mat	Frequency	Completed
601	Operator's name	Removing boiler from service (Normal shut down)	Unit Control Board				Rare	NO
602	Operator's name	Force cooling of boiler after shutdown	Unit Control Board				Rare	NO
603	Operator's name	Synchronize Generators 1,2, & 3 with power grid	Unit Control Board		POP 62 & 68		Rare	NO
604	Operator's name	Operate Units 1 & 2 on turning gear	Unit Control Board		POP 45		Rare	NO
605	Operator's name	Operate Unit 3 on turning gear	Unit Control Board		POP 45		Rare	NO
606	Operator's name	Prepare / start-up emergency diesel Stage 1	Station Service		POP 38		Occasional	NO
607	Operator's name	Shut down emergency diesel Stage 1	Station Service		POP 38		Occasional	NO
608	Operator's name	Prepare / start-up emergency diesel stage 2	Station Service		POP 39		Occasional	NO
609	Operator's name	Shut down emerg. diesel Stage 2	Station Service		POP 39		Occasional	NO
610	Operator's name	Diesel Generating Sets. Perform weekly tests.	Station Service		POP 38 & POP 39		Occasional	NO
611	Operator's name	Diesel Generating Sets. Add lube oil if required.	Station Service				Rare	NO
612	Operator's name	Diesel Generating Sets. Add coolant if required.	Station Service				Rare	NO
613	Operator's name	Perform electrical switching associated with transfer of power	Station Service				Rare	NO
614	Operator's name	Perform electrical switching associated with transfer of power	Station Service				Rare	NO
615	Operator's name	Perform electrical switching associated with the transfer of power	Station Service				Rare	NO
616	Operator's name	Check battery rooms.	Common				Often	NO
617	Operator's name	Check to make sure 4KV. Motor Heaters, For non-operating	Common				Often	NO
618	Operator's name	Issue work request on defective or malfunctioning equipment.	Common				Often	NO
619	Operator's name	Issue condition reports on unsafe conditions or works practices.	Common				Occasional	NO
620	Operator's name	Put plant ventilation system (Fans) louvers in service	Common				Occasional	NO
621	Operator's name	Prepare / start-up air conditioning system	Common				Rare	NO
622	Operator's name	Acknowledge and respond to eye wash station alarms	Common				Rare	NO