

1 Q. Exhibit #30, page 24 shows a simplified single line diagram of the Muskrat Falls converter  
2 station. Please provide a complete single line diagram and major equipment data of the  
3 Muskrat Falls converter station.

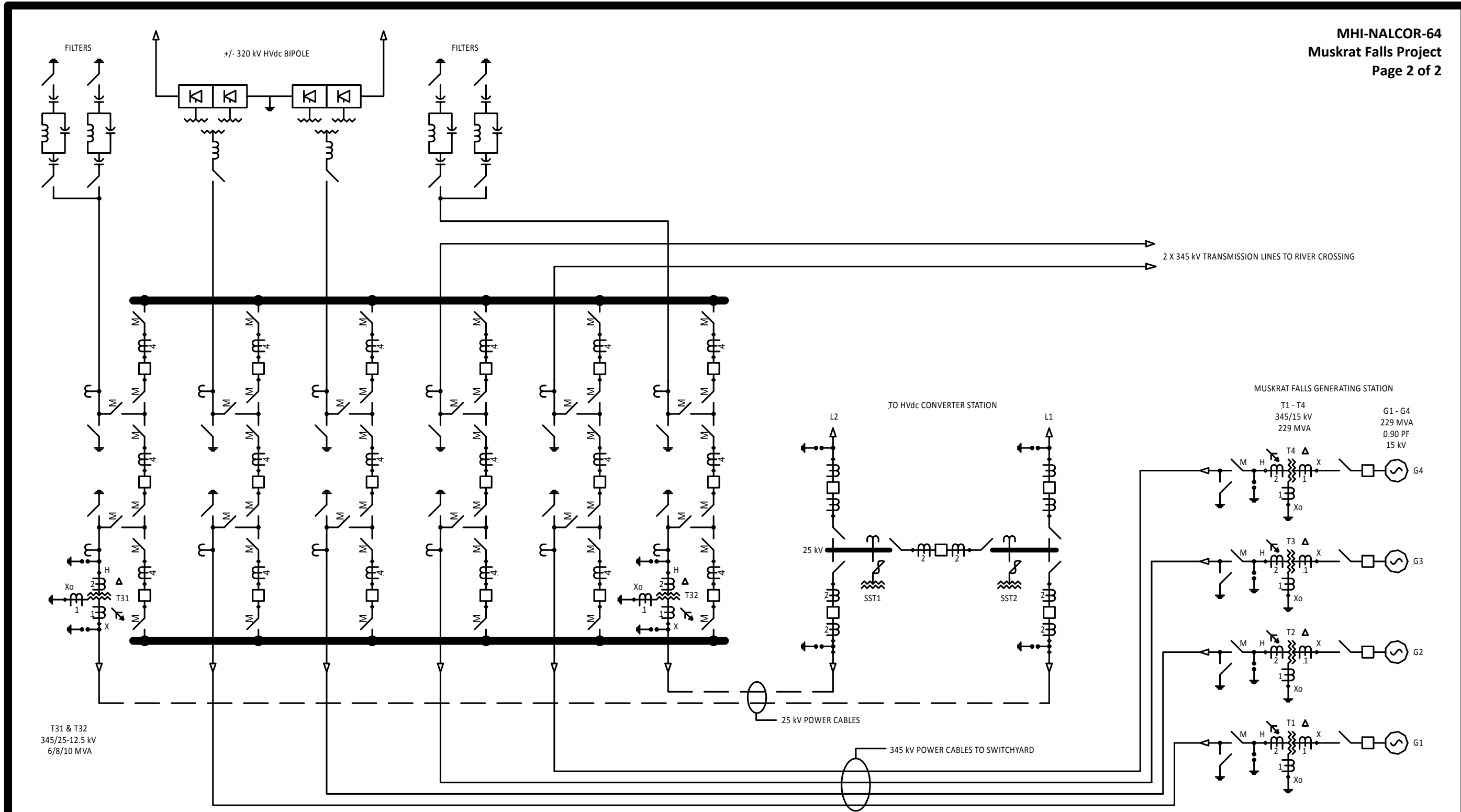
4

5

6 A. A detailed single line diagram for Muskrat Falls is under development as part of  
7 detailed design and is not yet available. Detailed studies are in progress to define  
8 system characteristics that will lead to the identification of major equipment data.

9

10 A single line diagram with additional detail beyond that shown in Exhibit 30, page  
11 24, can be found on the following page.



## MUSKRAT FALLS AC SWITCHYARD 345 kV SINGLE LINE DIAGRAM

SYS PLAN:	SHEET 1 OF 1
SYS OP:	DATE: AUGUST 28, 2011
ELEC:	DRAWN BY: PWT
P&C:	REVISION: 0
FILE: muskrat falls ac yard.SKF	