

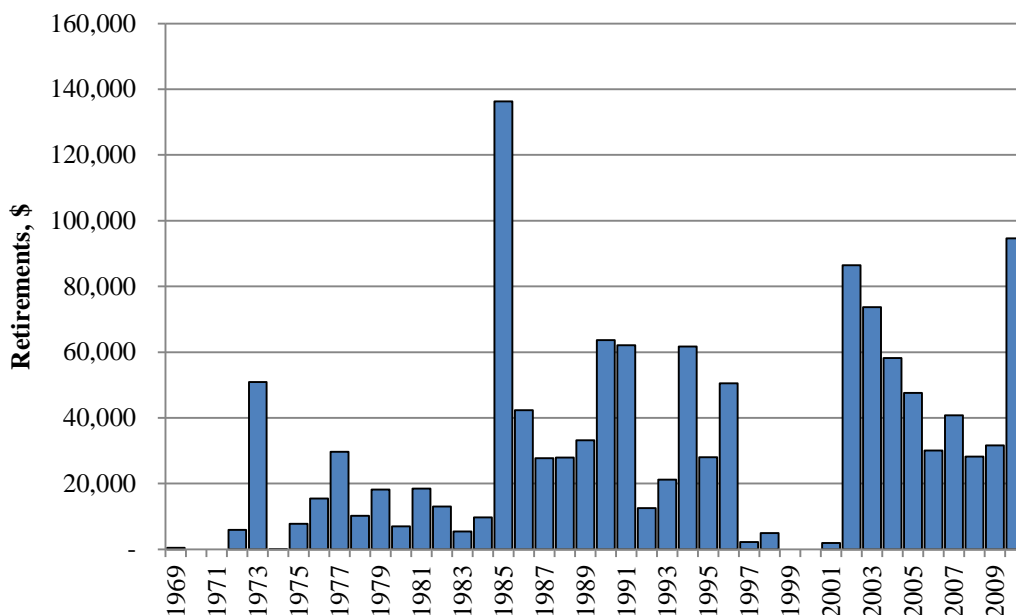
1 **Q. Reference: Transcript January 23, 2013**
 2 **Page 102 line 17 to Page 109 Line 2**

3
 4 **Please provide an update of Figure 7, Page 15, Appendix B of John Wiedmayer's**
 5 **Expert Rebuttal Evidence with what Mr. Wiedmayer believes to be the true**
 6 **retirement picture for underground cables and switches.**

7
 8 A. A complete assessment of the retirement picture for the underground cables and switches
 9 account from 1997 to 2010 cannot be completed within the schedule of this proceeding.

10
 11 In the response to Request for Information CA-NP-070, Newfoundland Power provided
 12 an estimate of the number of metres of underground cable retirements over the period
 13 from 2002 to 2010. Over this period, the estimated average cost of plant in service was
 14 approximately \$25 per metre.¹ Figure 7 has been updated to include the estimated
 15 retirements from 2002 to 2010 using the quantities estimated in the response to Request
 16 for Information CA-NP-070 multiplied by the estimated average cost of plant in service
 17 of \$25 per metre.
 18
 19

Figure 7
Accounts 361.20 and 367.20 Underground Cable and Switches
Annual Retirements, 1969-2010



¹ Due to time constraints, the Company was not able to provide an updated estimate of retirements from 1997 to 2001.