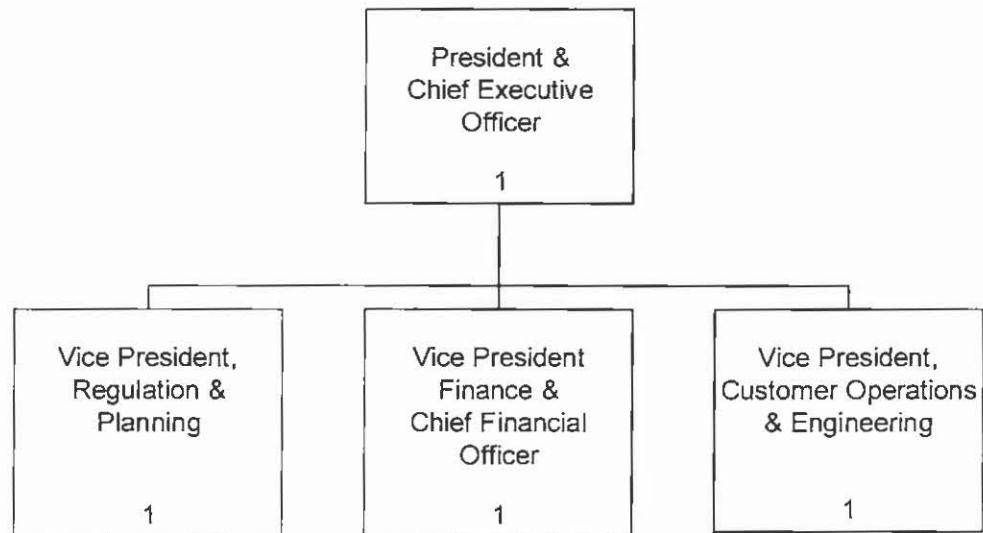


- 1 **Q. Please provide a copy of Newfoundland Power’s organizational chart.**
2
3 A. Attachment A contains a copy of Newfoundland Power’s organization chart as of
4 August 31st, 2012.

**Newfoundland Power's Organization Chart as of
August 31st, 2012**

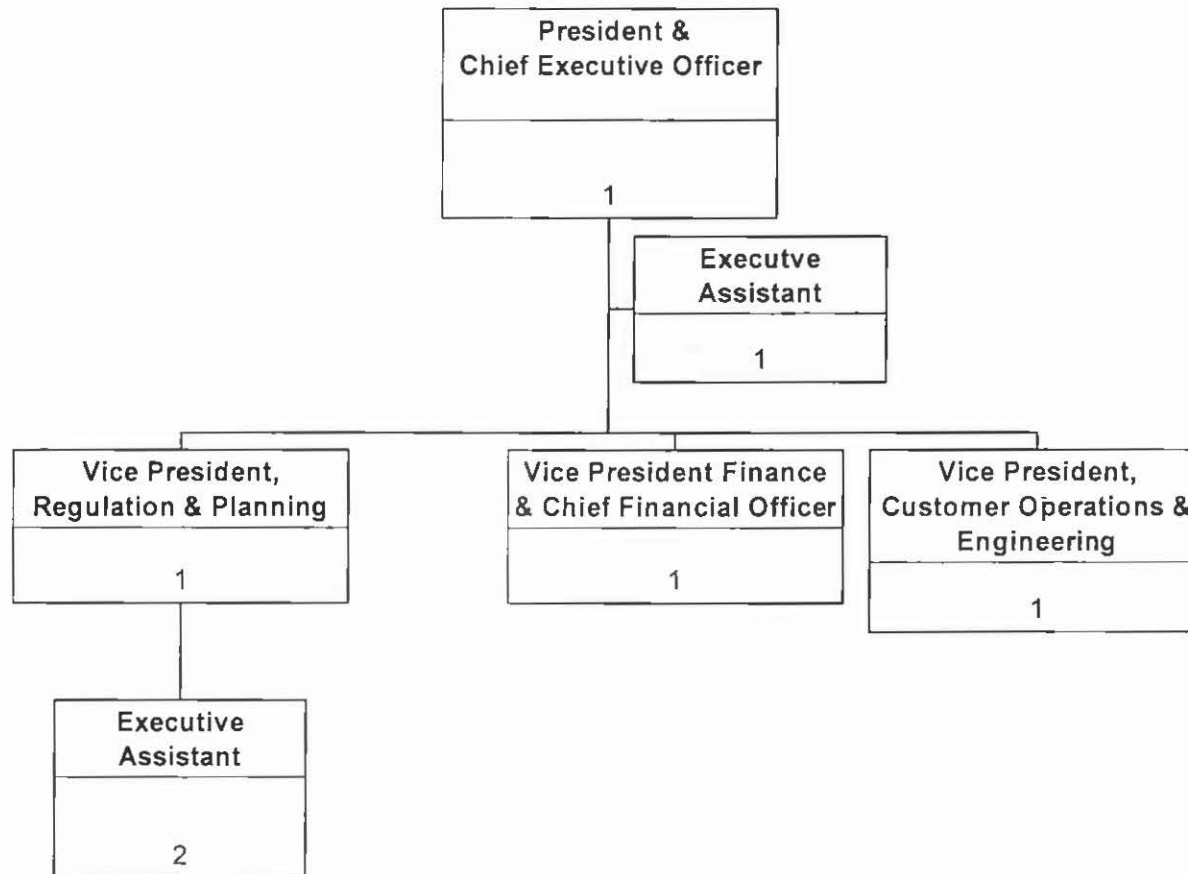
Newfoundland Power Inc.

Executive Group



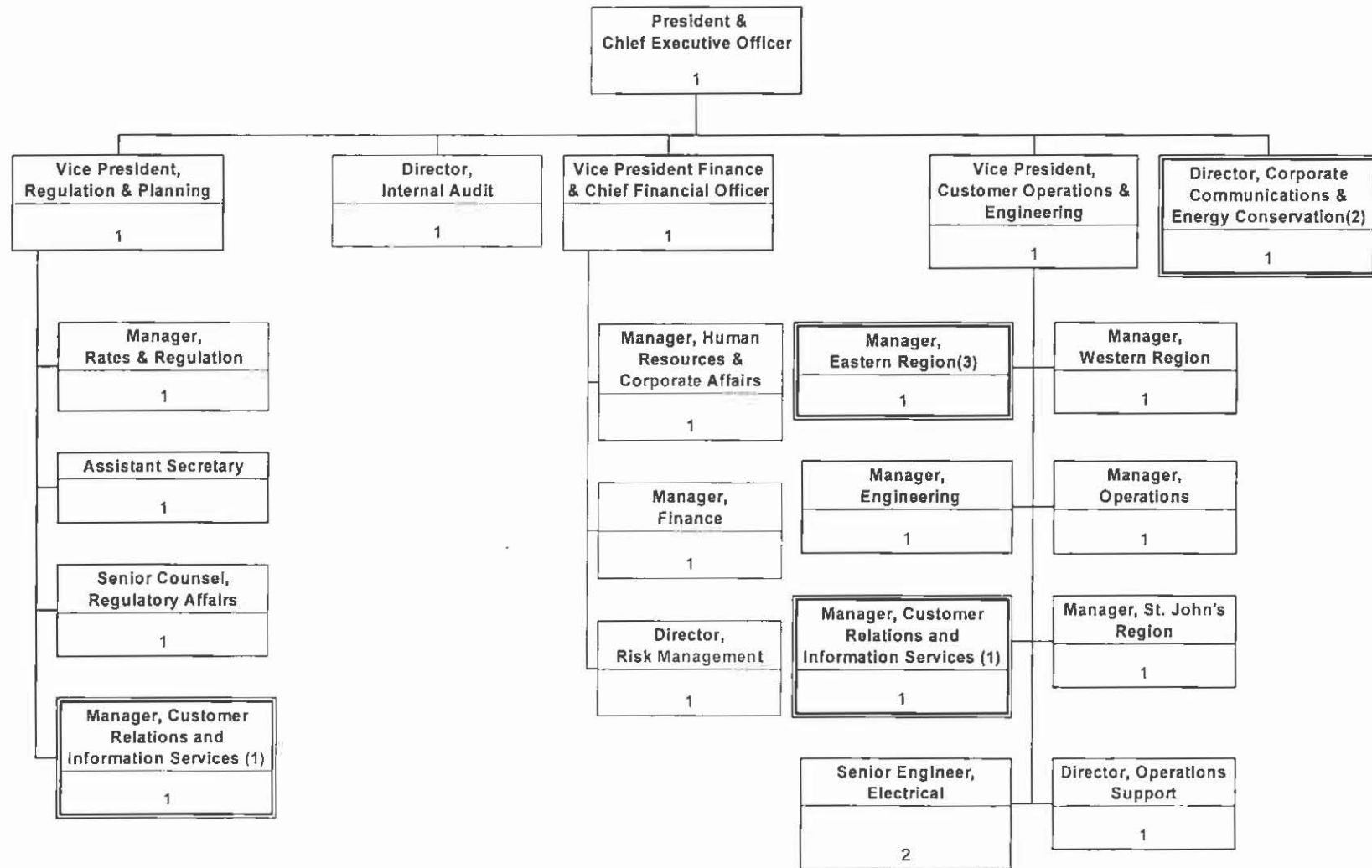
NEWFOUNDLAND POWER INC.

Corporate Office



NEWFOUNDLAND POWER INC.

Corporate Organization



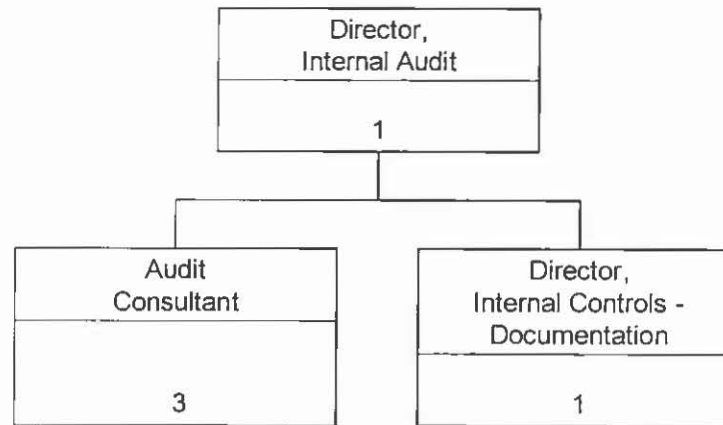
(1) Dual reporting to Vice-President, Regulation & Planning and Vice-President, Customer Operations & Engineering

(2) Dual reporting to Manager, Human Resources and Corporate Affairs

(3) Dual reporting to President and CEO on governmental affairs

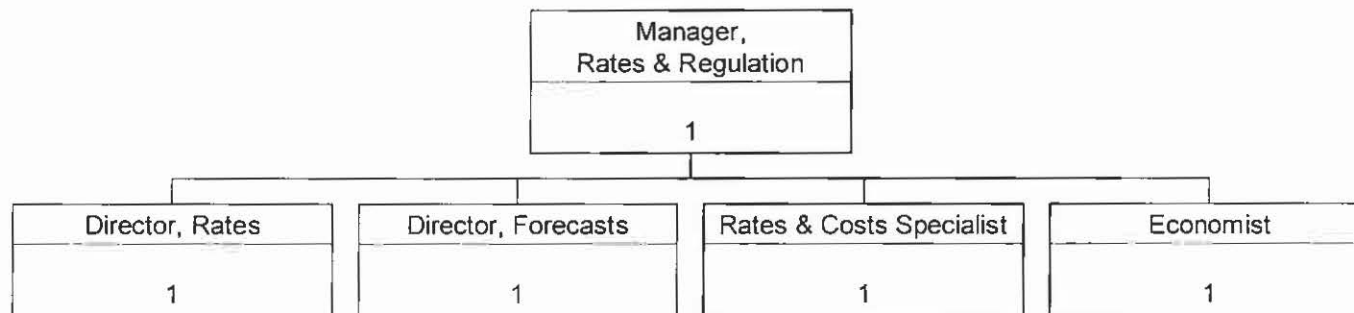
NEWFOUNDLAND POWER INC.

Internal Audit & Corporate Effectiveness



NEWFOUNDLAND POWER INC.

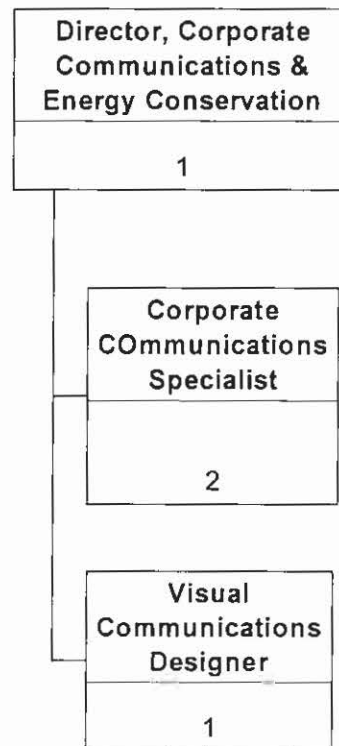
Rates and Regulation



NEWFOUNDLAND POWER INC.

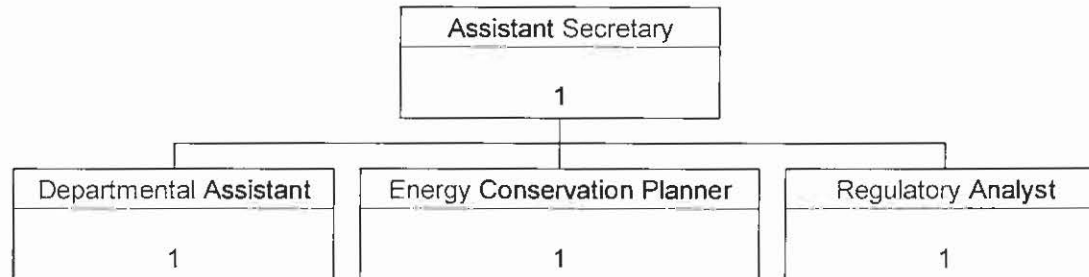
Customer & Corporate Services

Corporate Communications



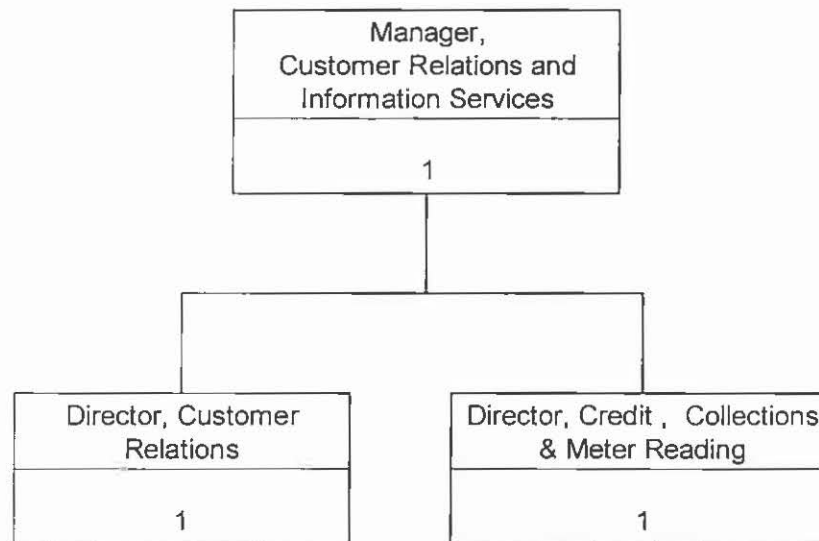
NEWFOUNDLAND POWER INC.

Regulation and Planning



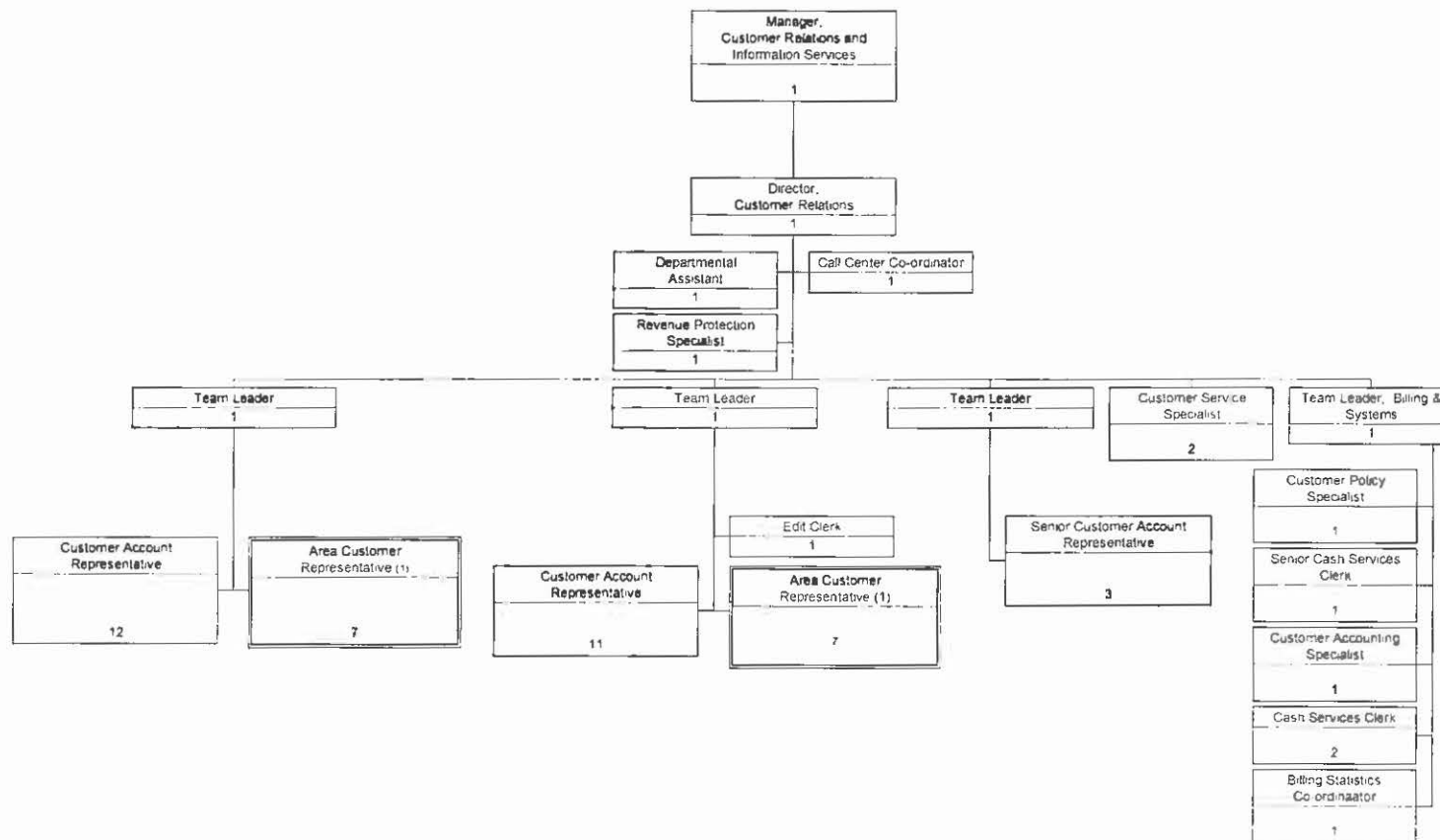
NEWFOUNDLAND POWER INC.

Customer Relations (Page 1 of 3)



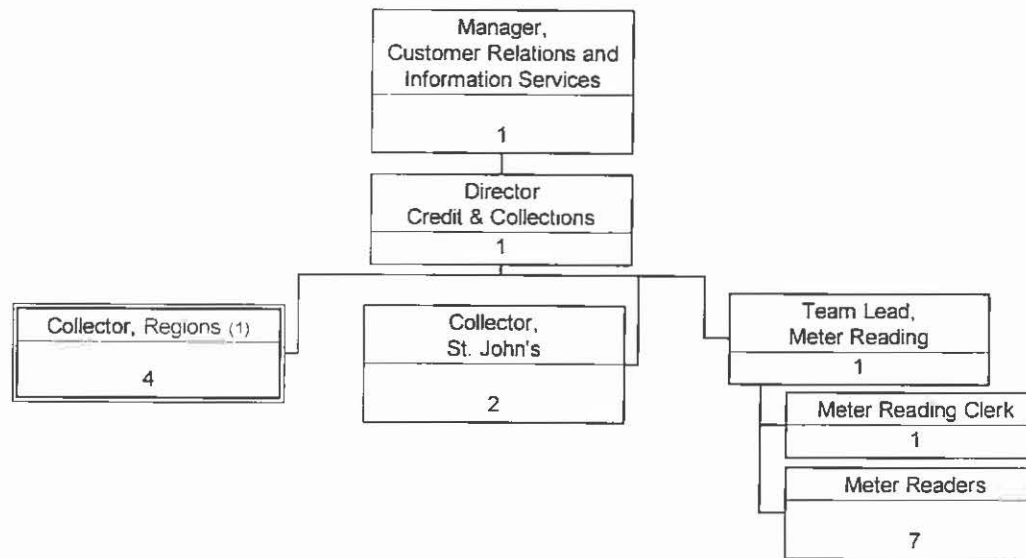
NEWFOUNDLAND POWER INC.

Customer Relations (Page 2 of 3)



NEWFOUNDLAND POWER INC.

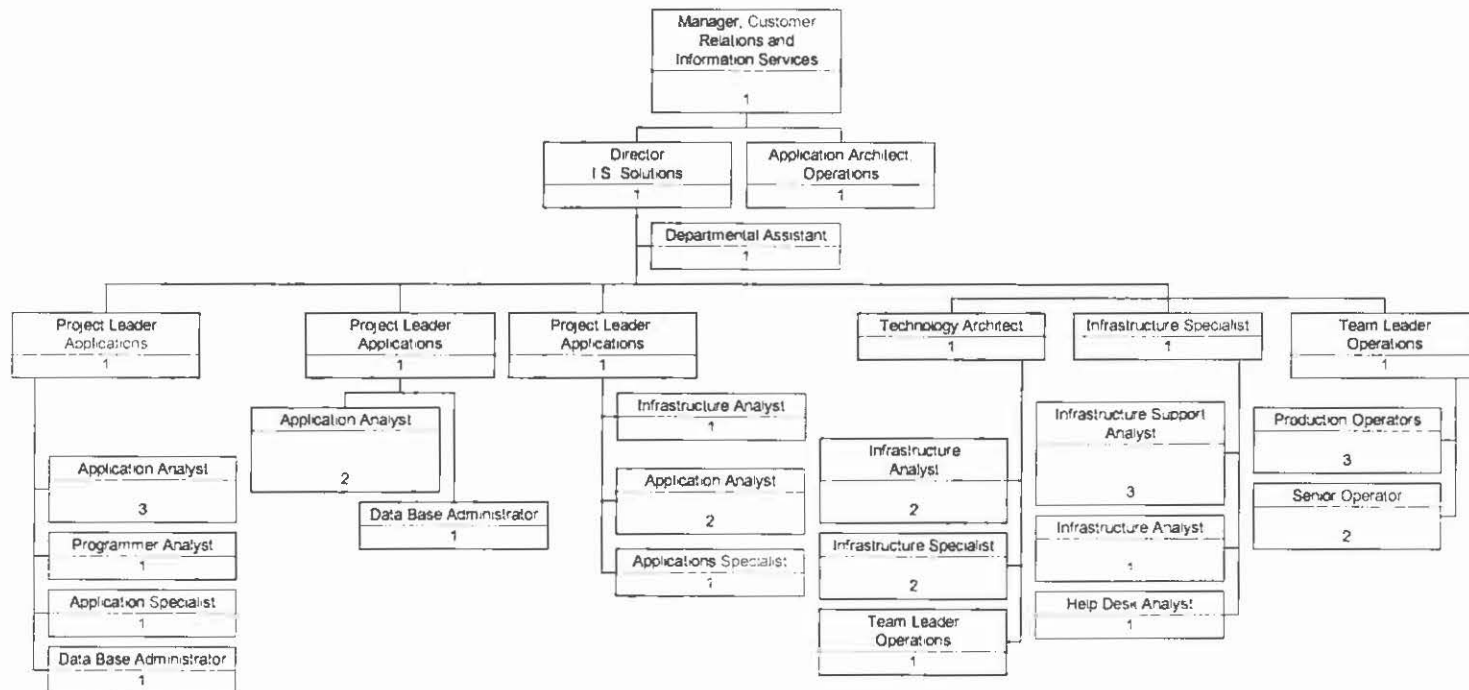
Customer Relations (Page 3 of 3)



NEWFOUNDLAND POWER INC.

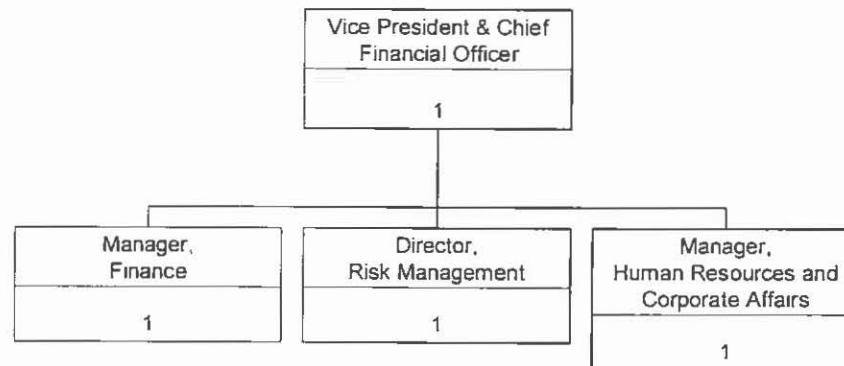
Customer & Corporate Services

Information Services



NEWFOUNDLAND POWER INC.

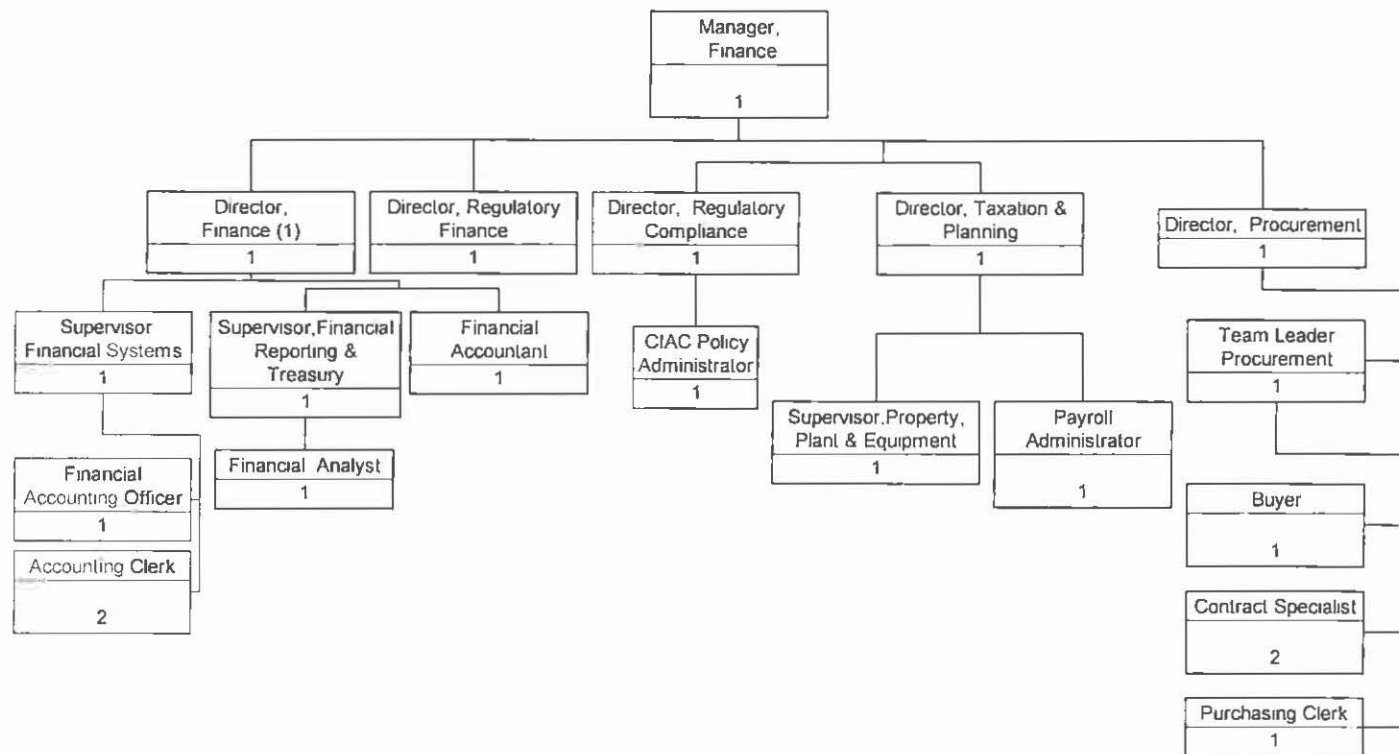
Finance



NEWFOUNDLAND POWER INC.

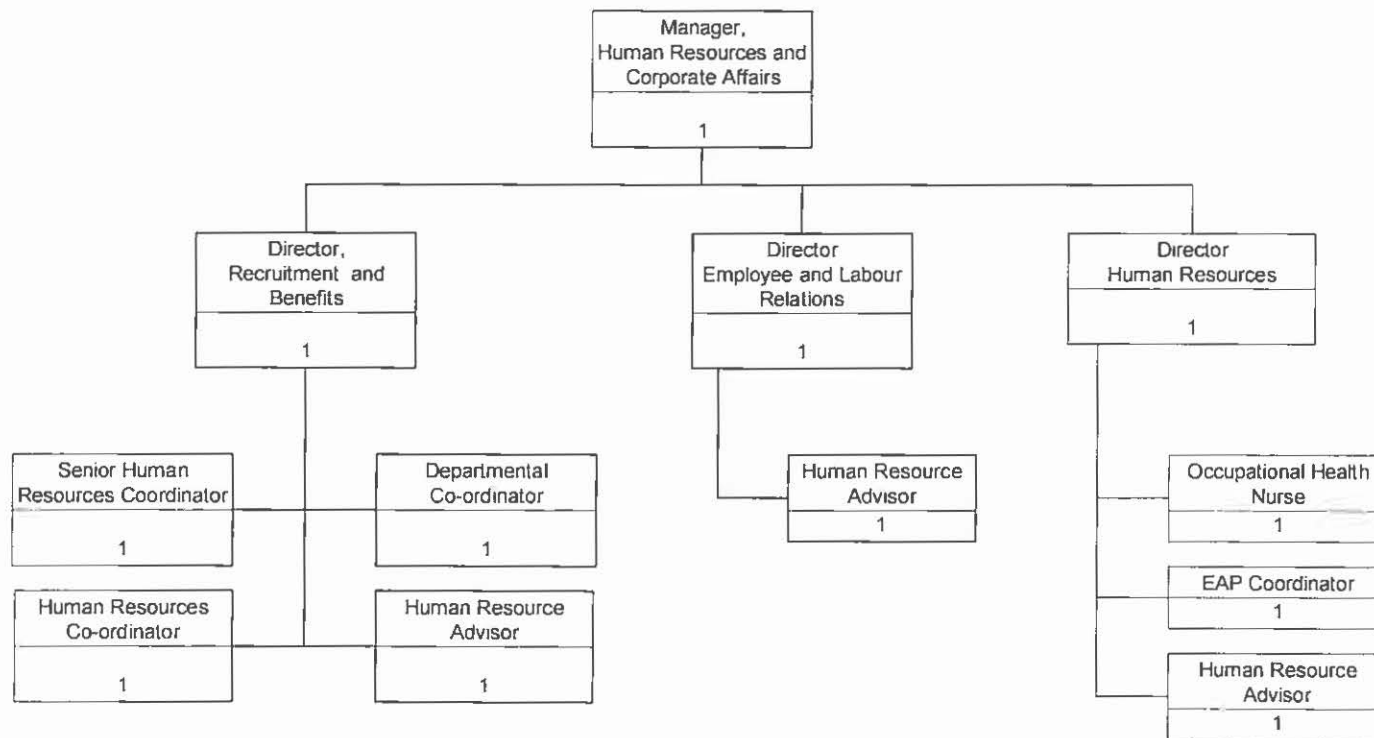
Finance

Finance Department



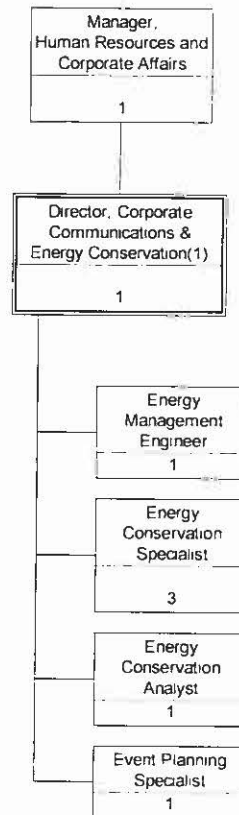
NEWFOUNDLAND POWER INC.

Human Resources



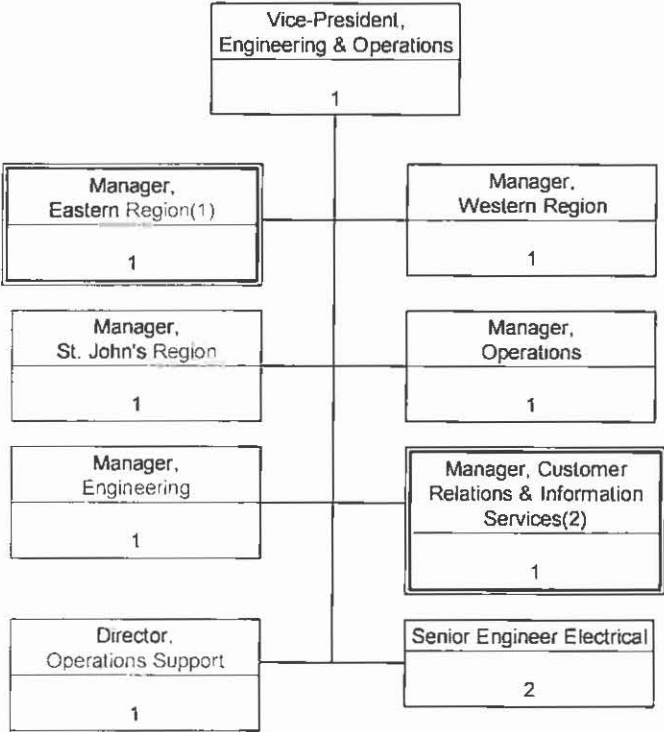
NEWFOUNDLAND POWER INC.

Energy Conservation



NEWFOUNDLAND POWER INC.

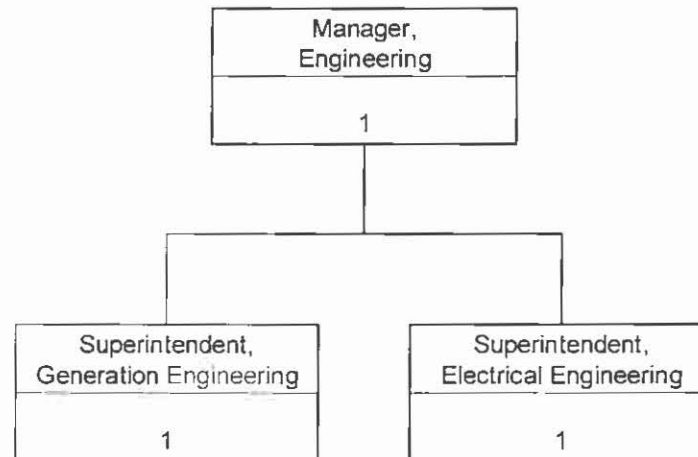
Engineering & Operations



(1) Dual reporting to President & CEO on governmental affairs
(2) Dual reporting to Vice-President, Regulation and Planning

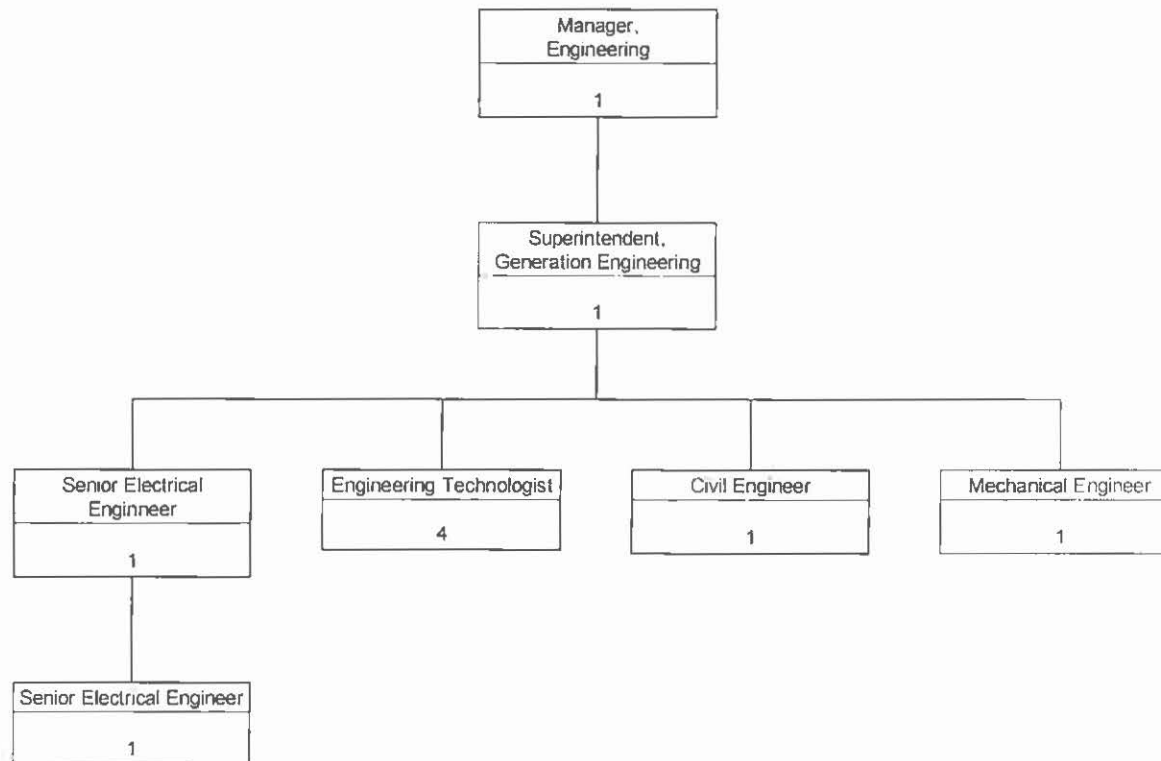
NEWFOUNDLAND POWER INC.

Engineering (Page 1 of 3)



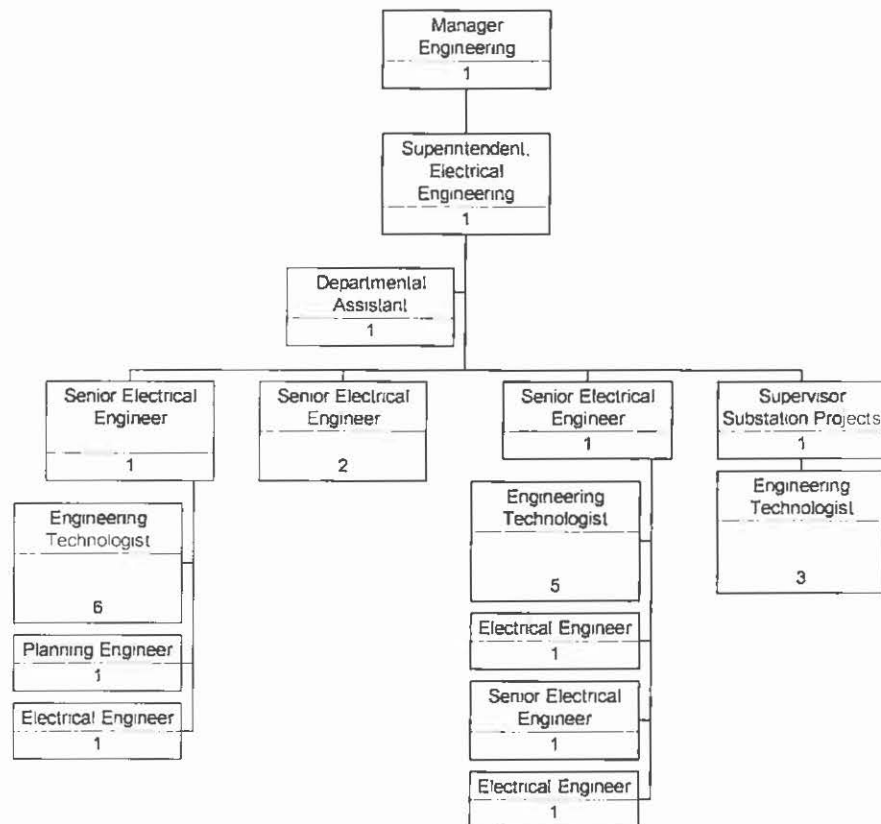
NEWFOUNDLAND POWER INC.

Engineering (Page 2 of 3)



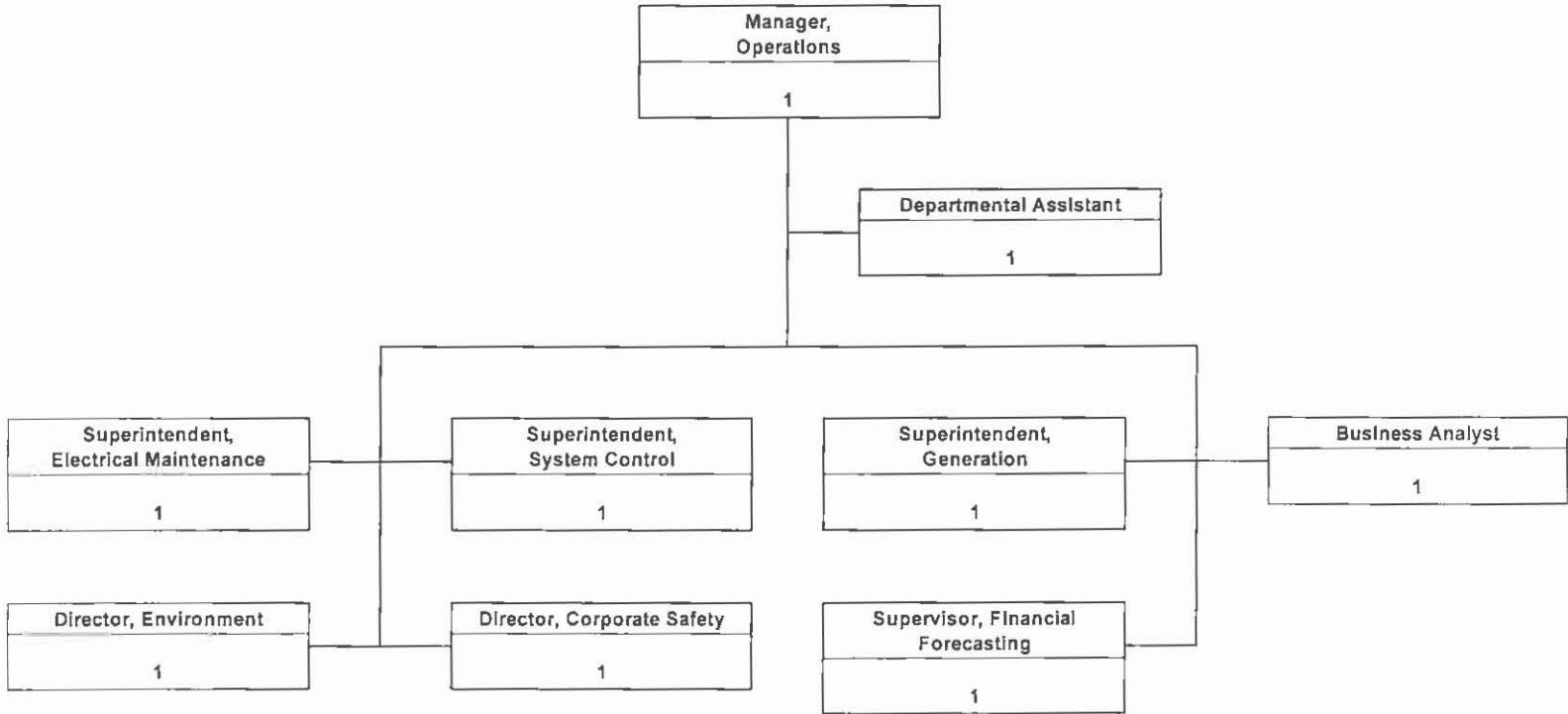
NEWFOUNDLAND POWER INC.

Engineering (Page 3 of 3)



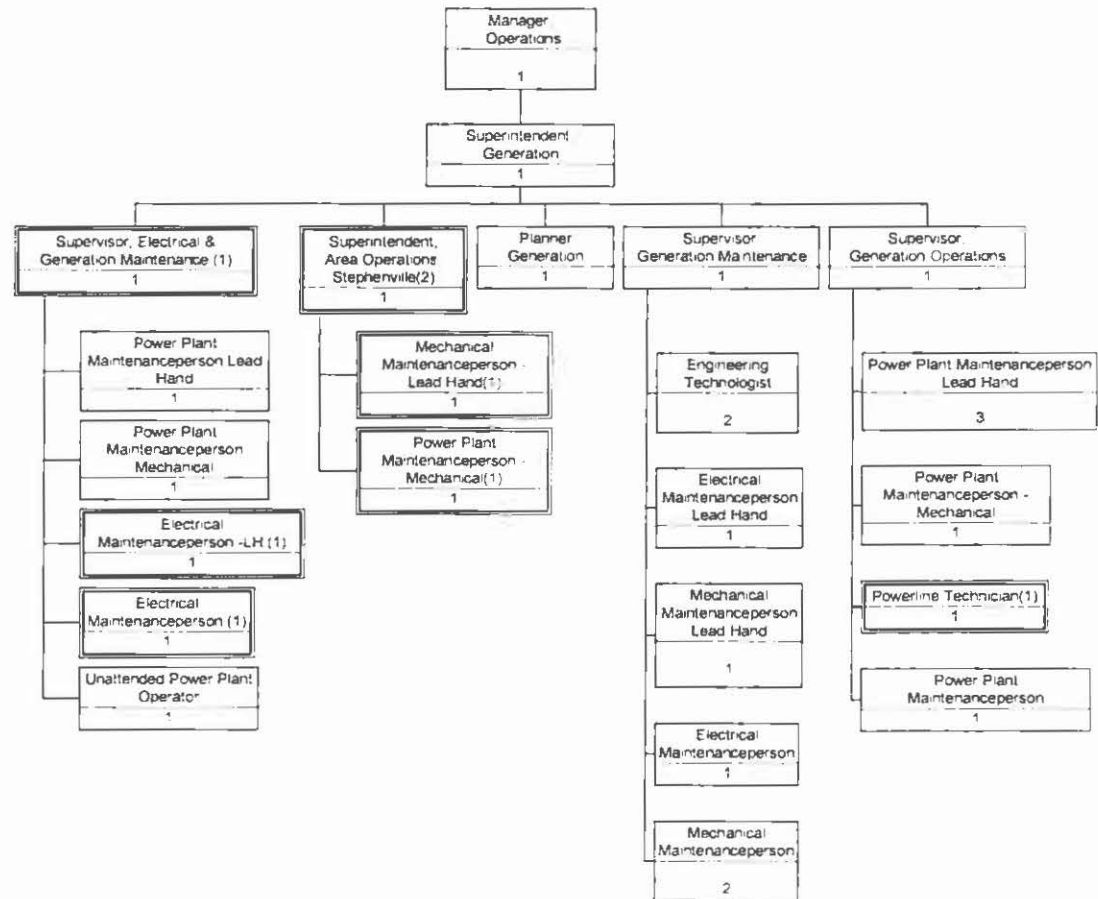
NEWFOUNDLAND POWER INC.

OPERATIONS (Page 1 of 5)



NEWFOUNDLAND POWER INC.

OPERATIONS (Page 2 of 5)

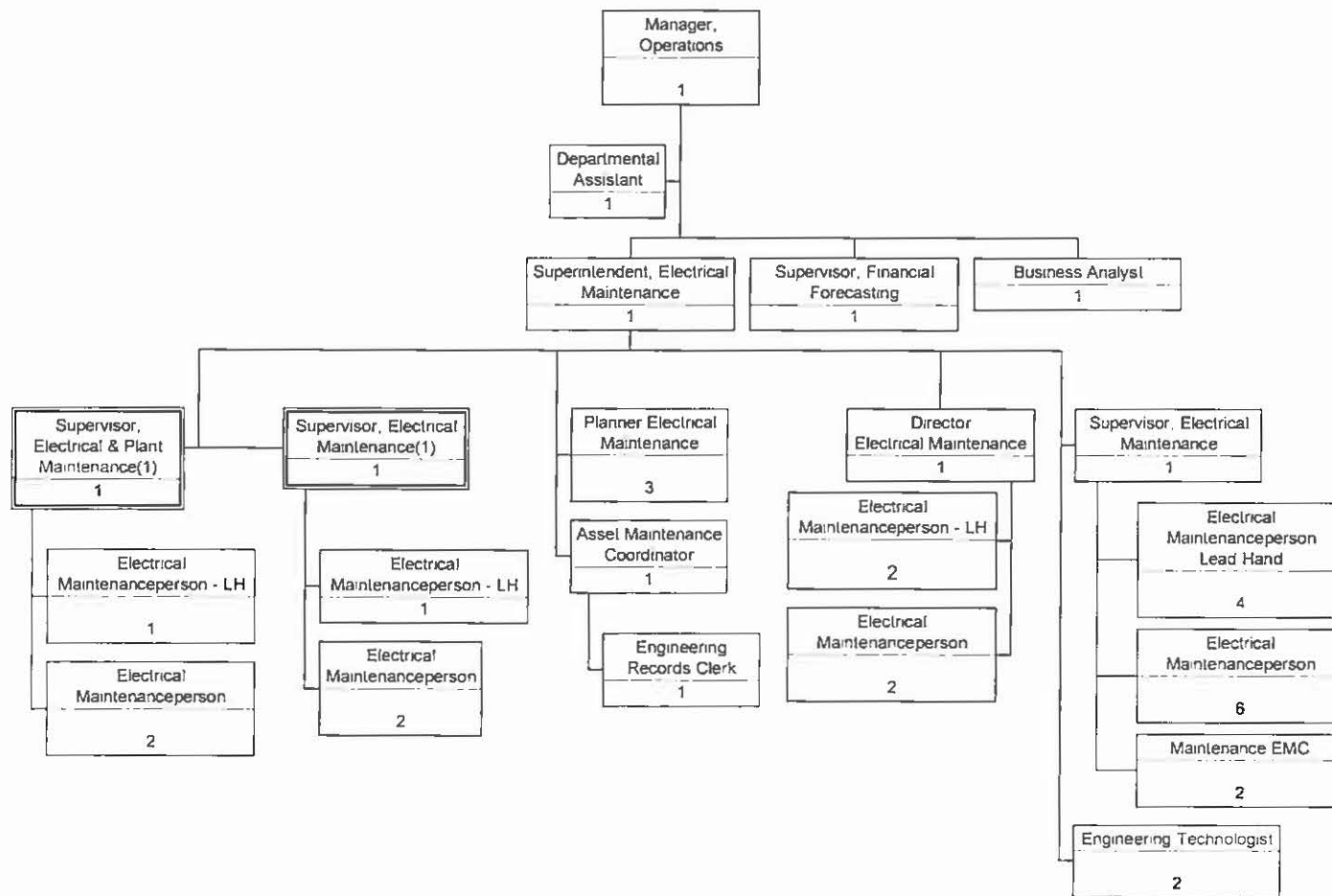


NOTES

- (1) Dual reporting relationship with Regions
(2) Dual reporting with Manager, Western Region

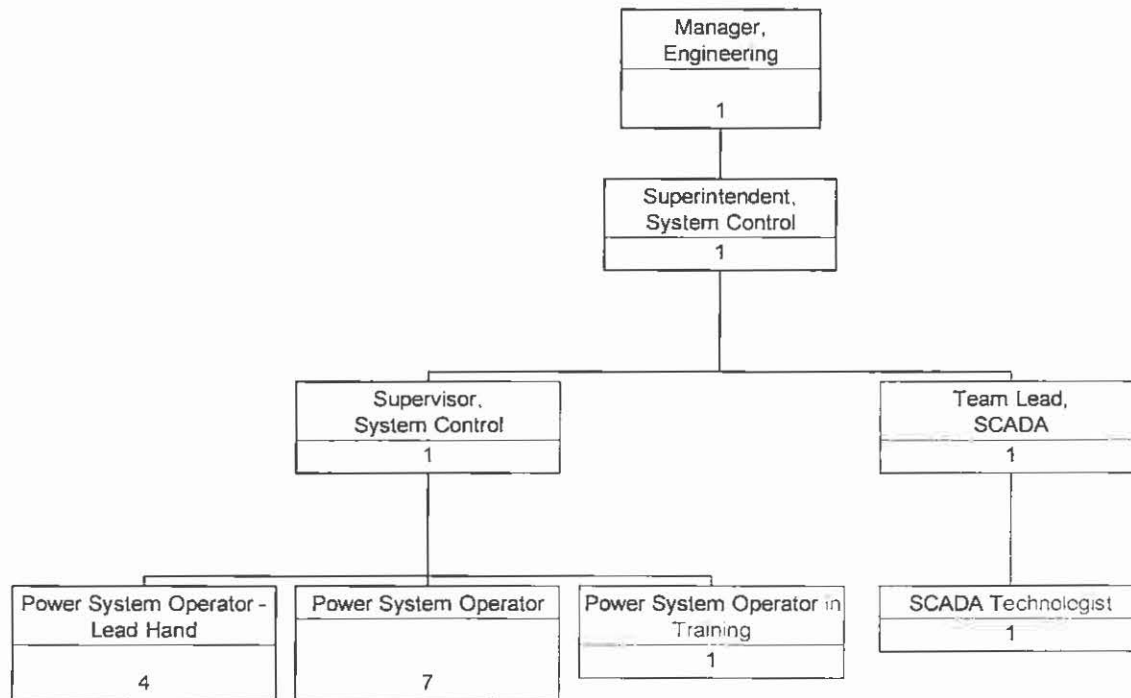
NEWFOUNDLAND POWER INC.

Operations (Page 3 of 5)



NEWFOUNDLAND POWER INC.

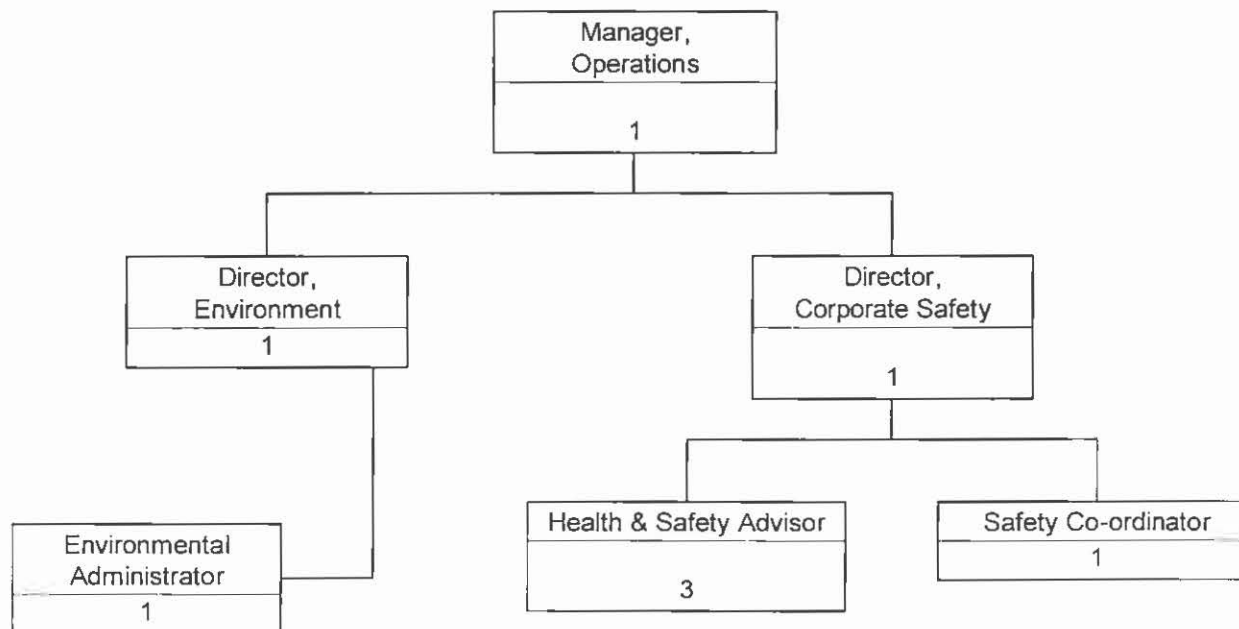
Operations (Page 4 of 5)



NEWFOUNDLAND POWER INC.

Operations

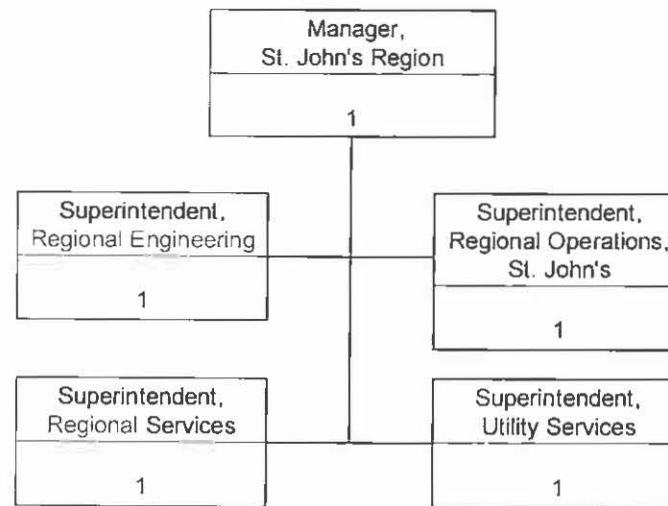
Health, Safety & Environment Page 5 of 5



NEWFOUNDLAND POWER INC.

Engineering & Operations

St. John's Region

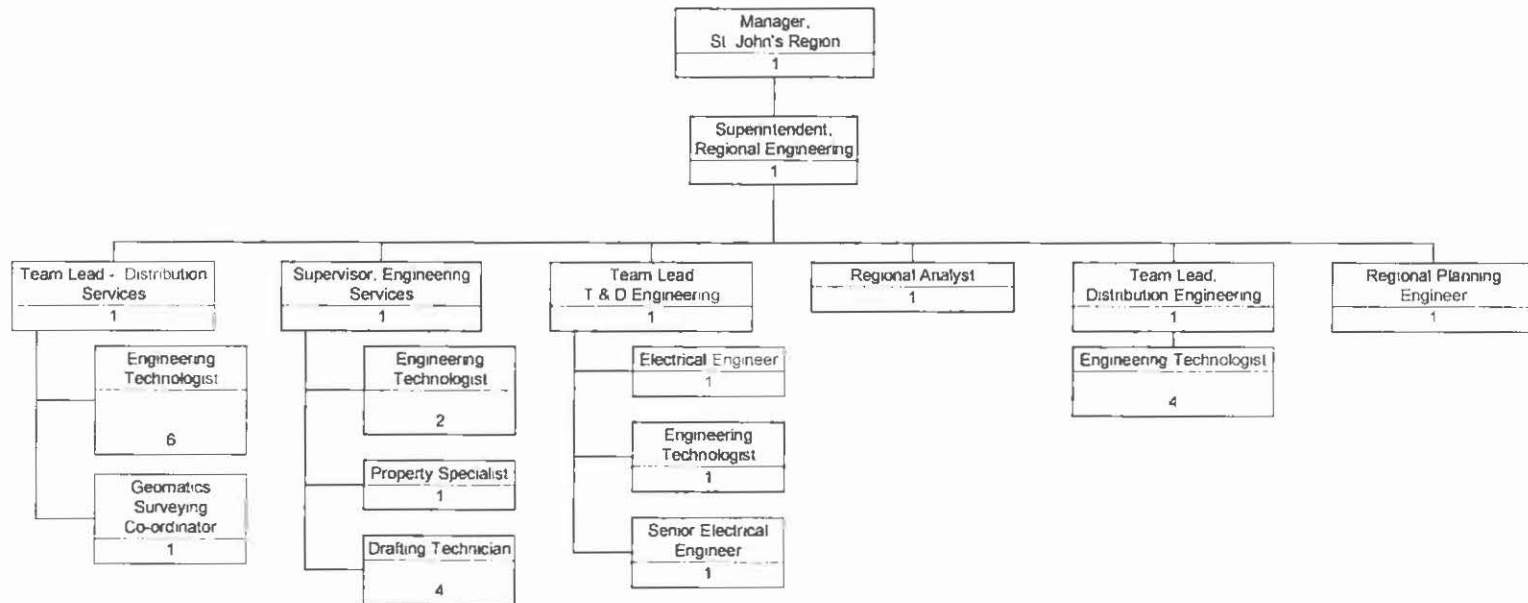


NEWFOUNDLAND POWER INC.

Engineering & Operations

St. John's Region

Regional Engineering



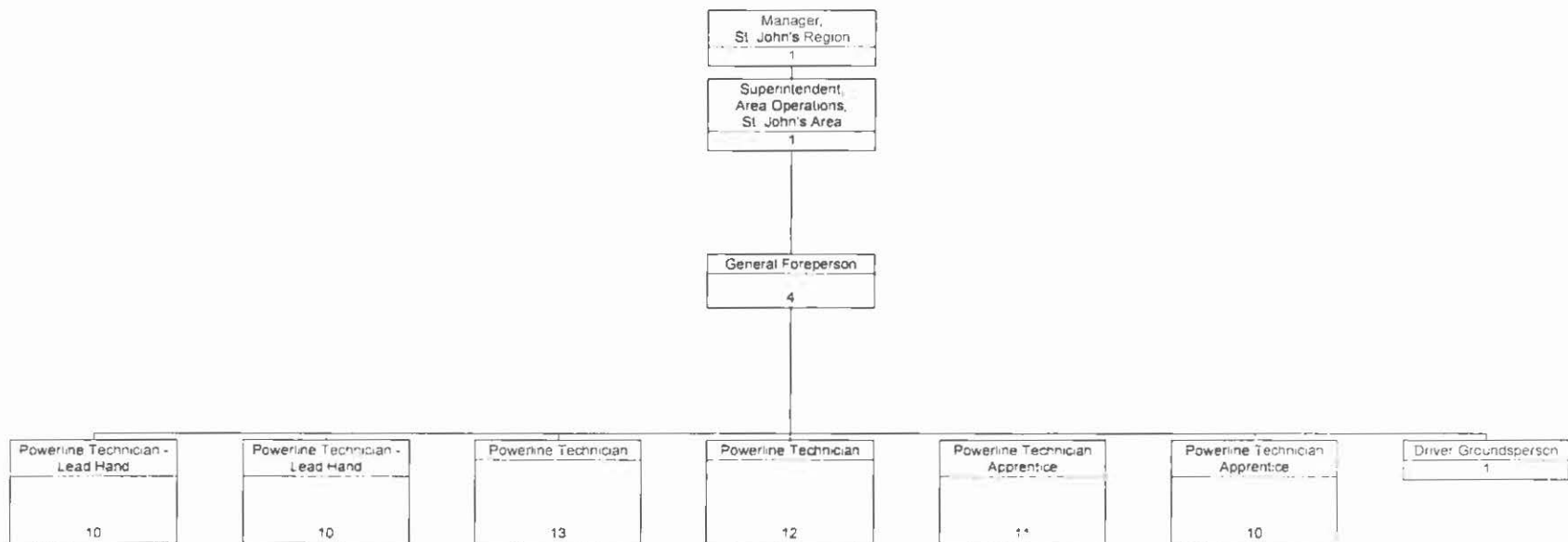
NEWFOUNDLAND POWER INC.

Engineering & Operations

St. John's Region

St. John's Area Operations

(Page 1 of 2)



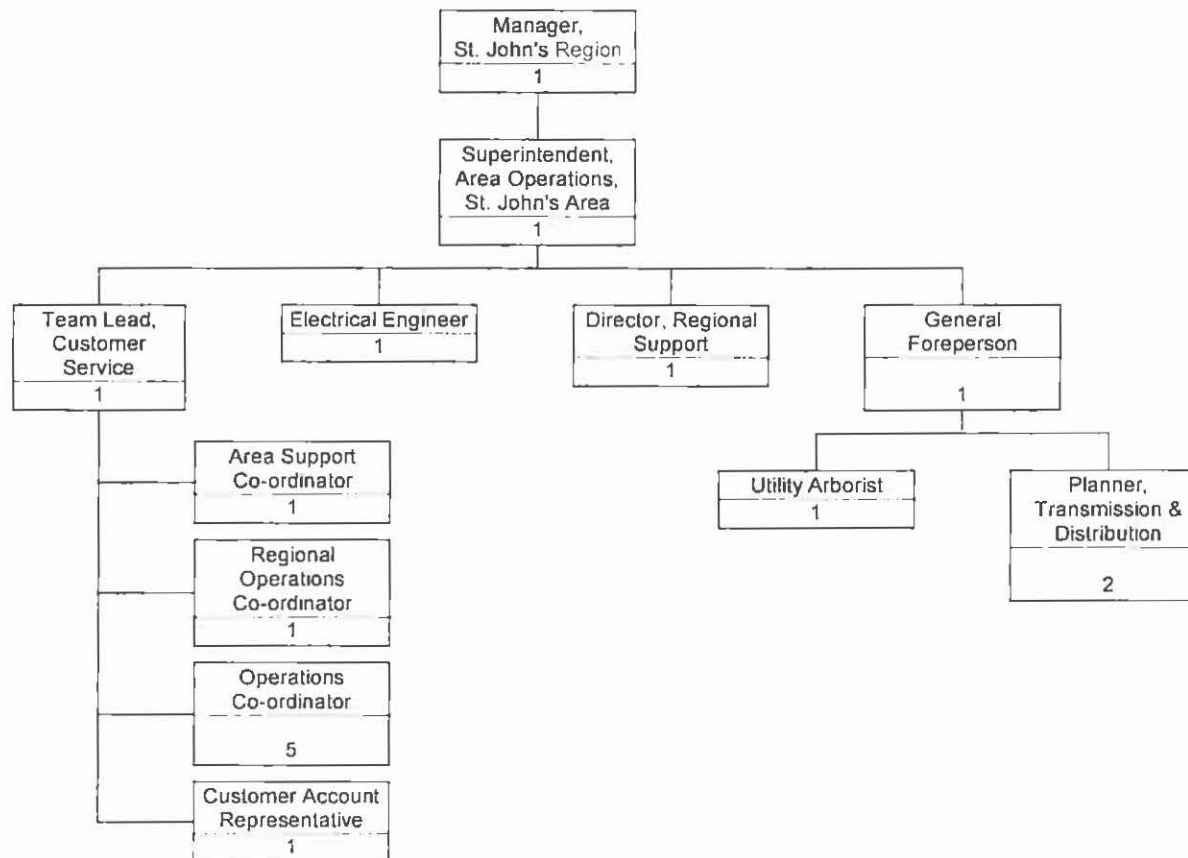
NEWFOUNDLAND POWER INC.

Engineering & Operations

St. John's Region

St. John's Area Operations

(Page 2 of 2)

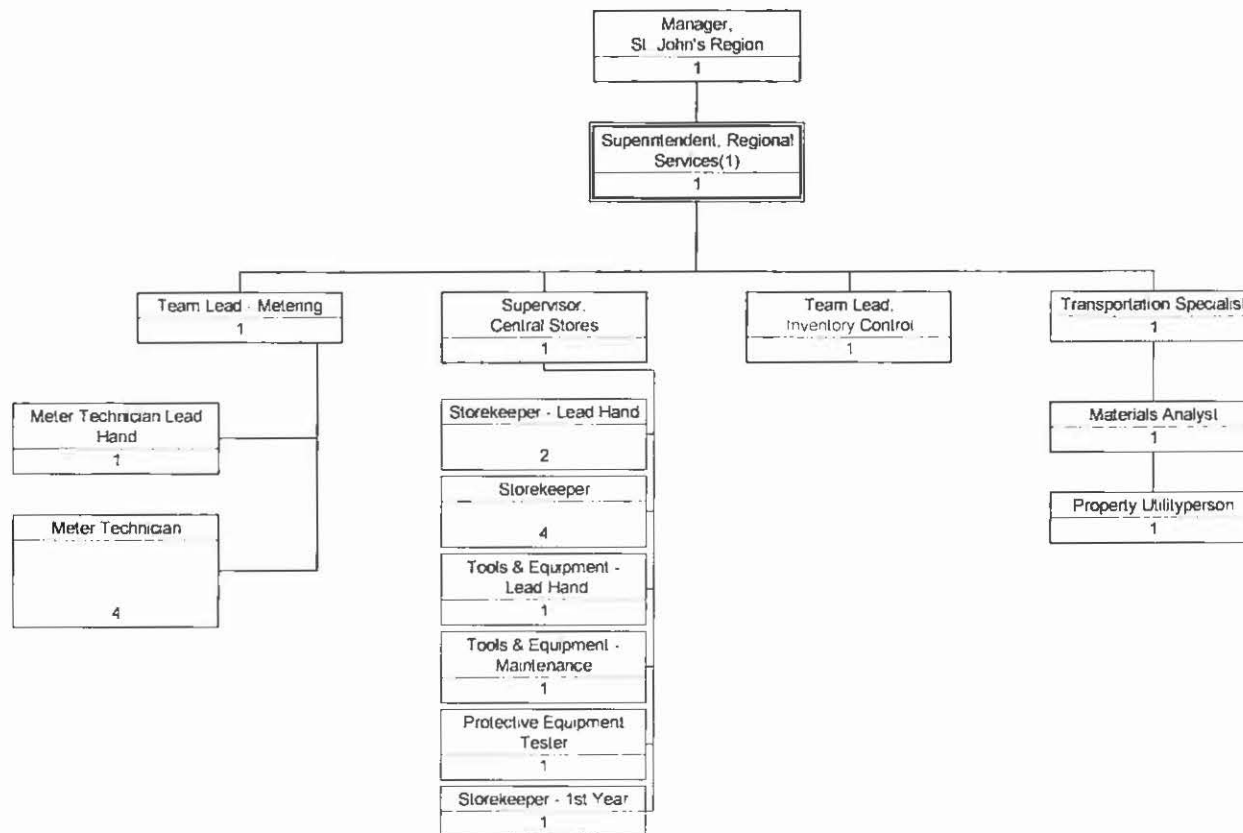


NEWFOUNDLAND POWER INC.

Engineering & Operations

St. John's Region

Regional Services

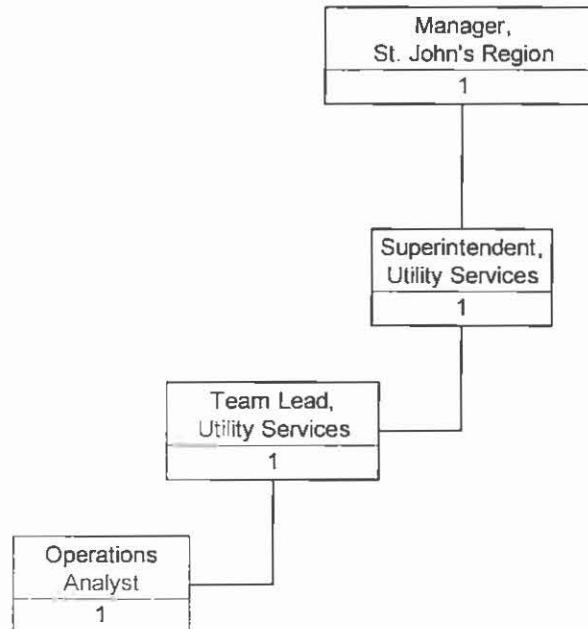


NEWFOUNDLAND POWER INC.

Engineering & Operations

St. John's Region

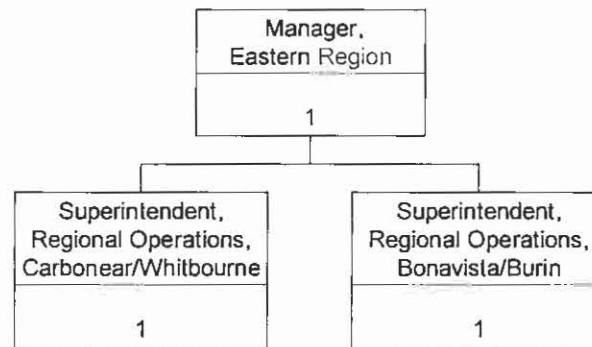
Utility Services



NEWFOUNDLAND POWER INC.

Engineering & Operations

Eastern Region

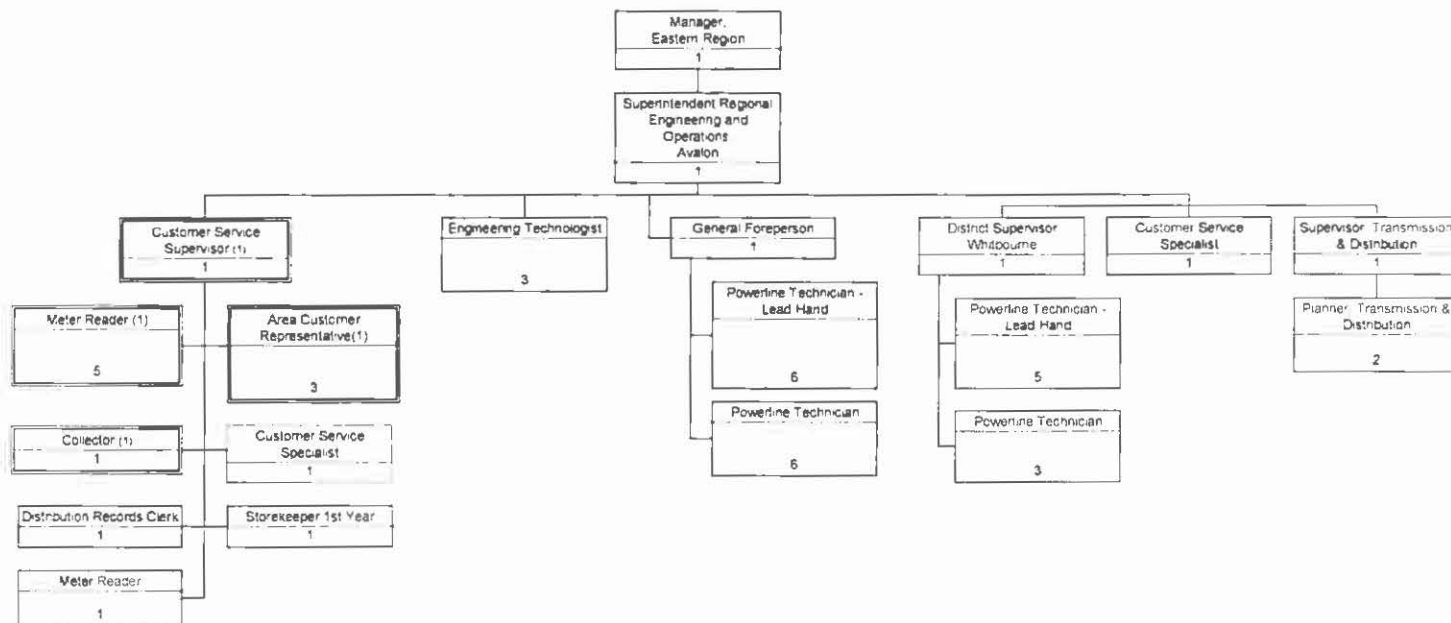


NEWFOUNDLAND POWER INC.

Engineering & Operations

Eastern Region

Carbonear & Whitbourne Area Operations

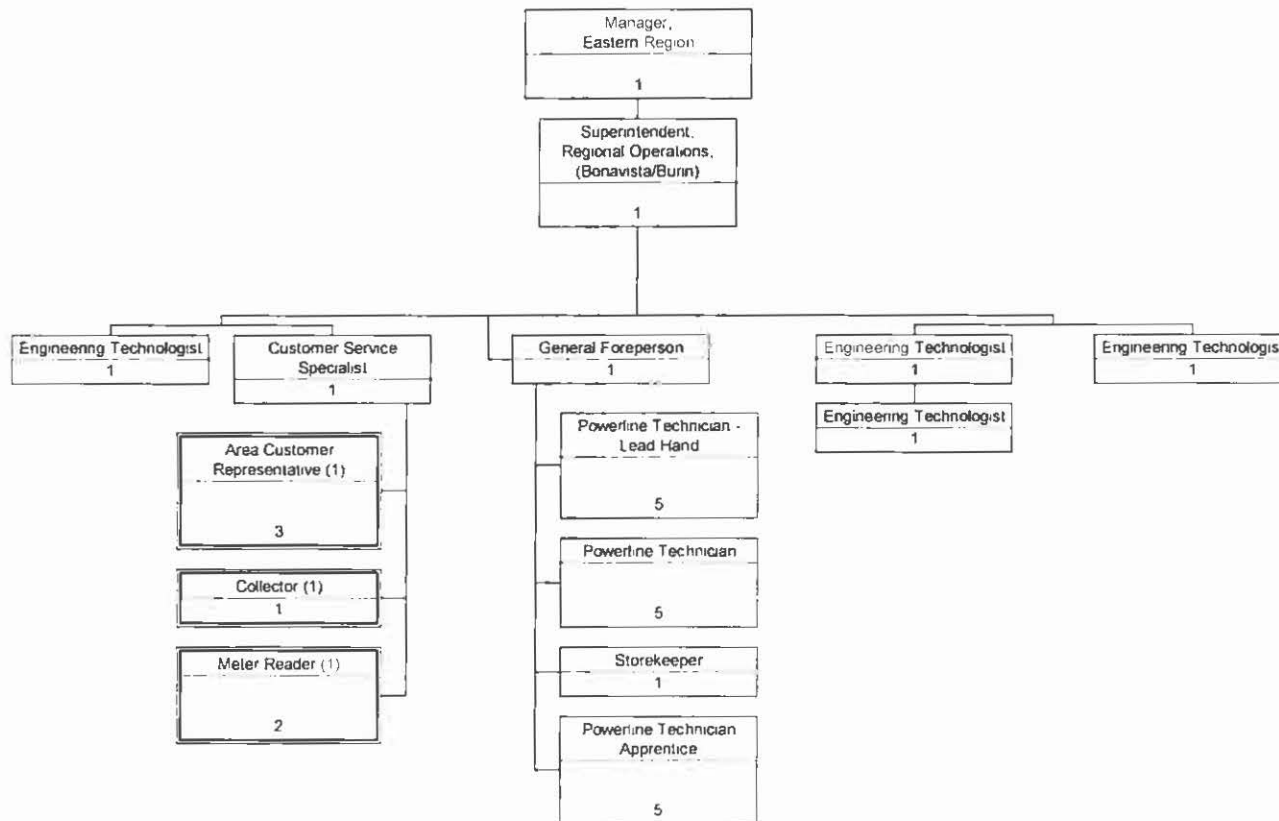


NEWFOUNDLAND POWER INC.

Engineering & Operations

Eastern Region

Bonavista Area Operations

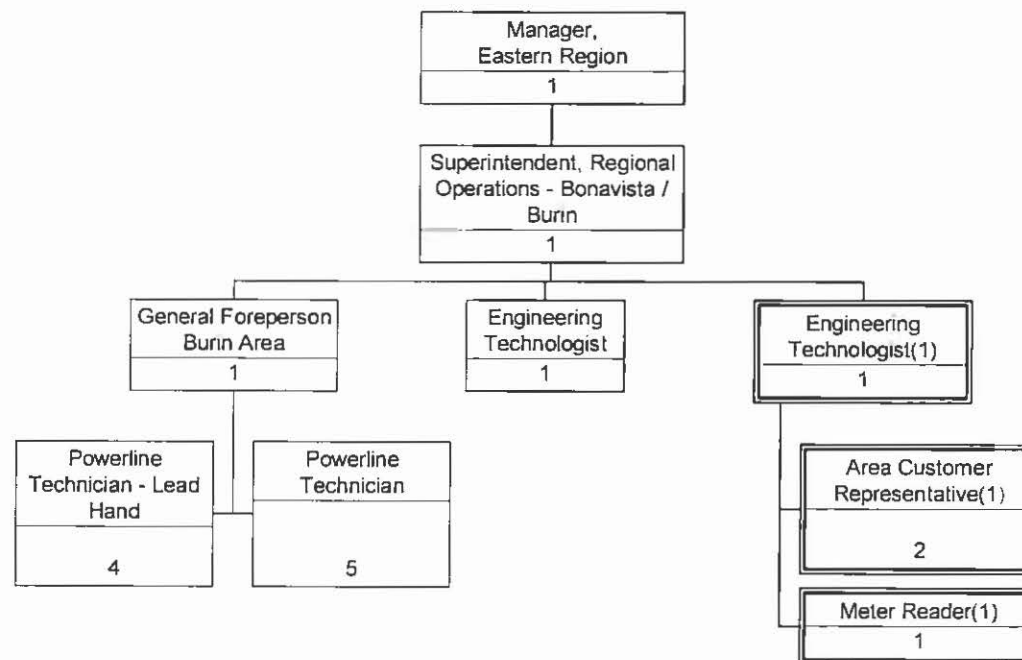


NEWFOUNDLAND POWER INC.

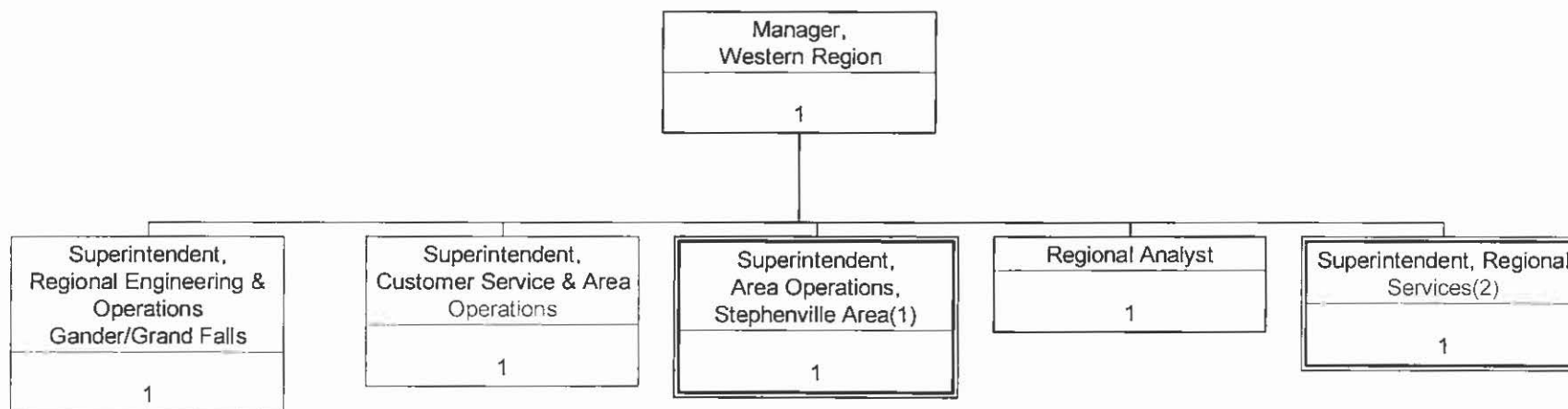
Engineering & Operations

Eastern Region

Burin Area Operations



Newfoundland Power Inc.
Engineering & Operations
Western Region

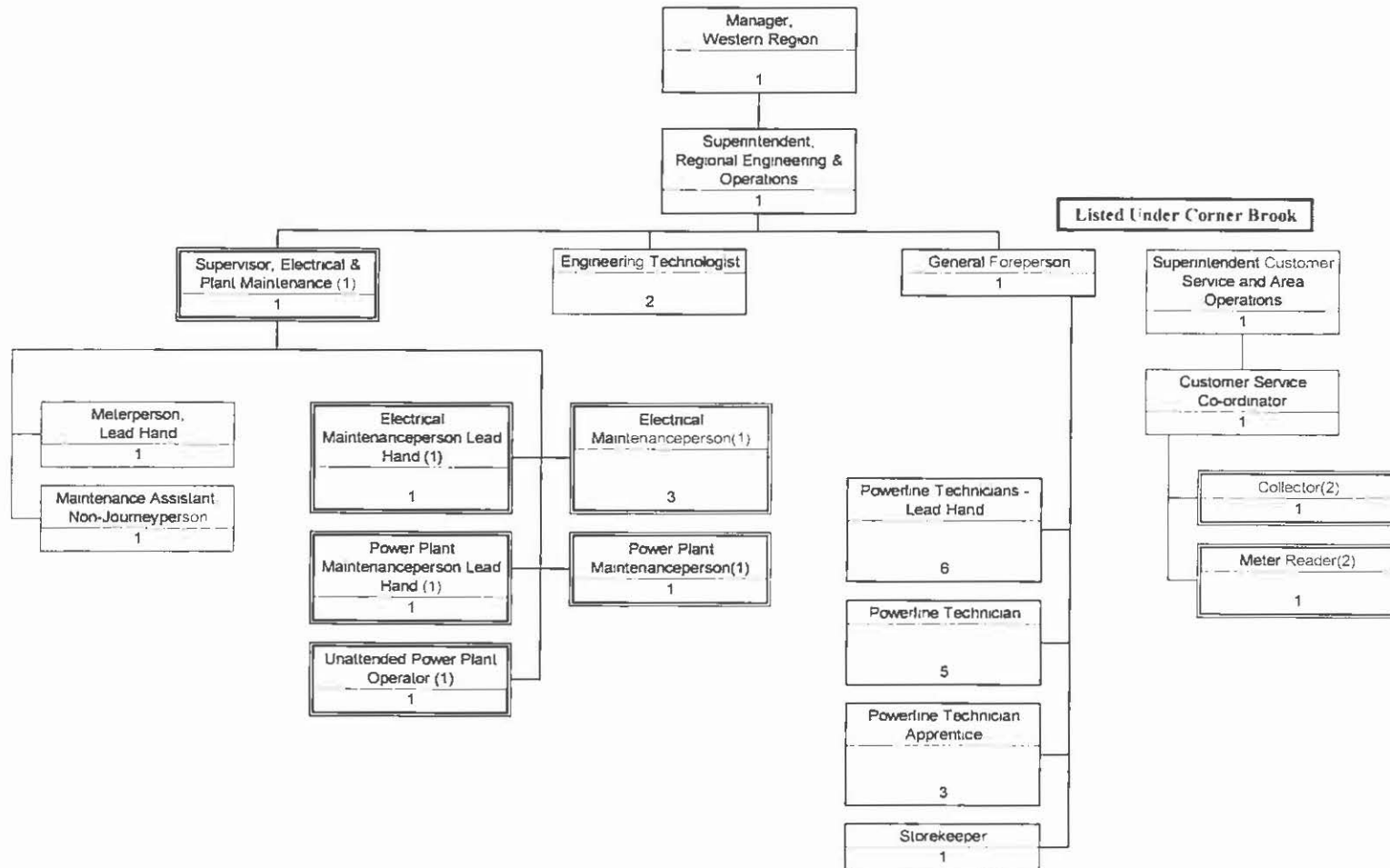


NEWFOUNDLAND POWER INC.

Engineering & Operations

Western Region

Regional Operations - Gander Area



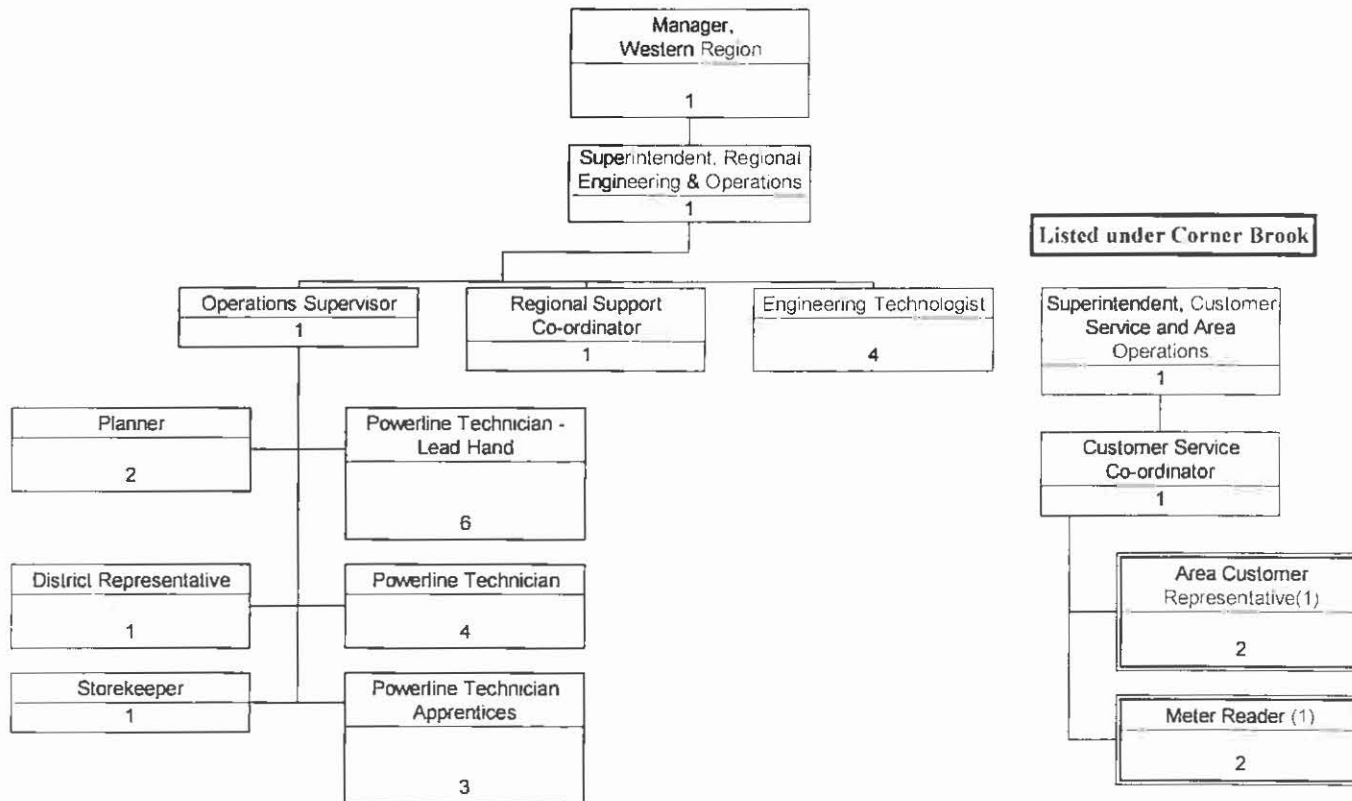
(1) Dual reporting relationship with Operations.
(2) Dual reporting relationship with Customer Relations.

NEWFOUNDLAND POWER INC.

Engineering & Operations

Western Region

Regional Operations - Grand Falls Area

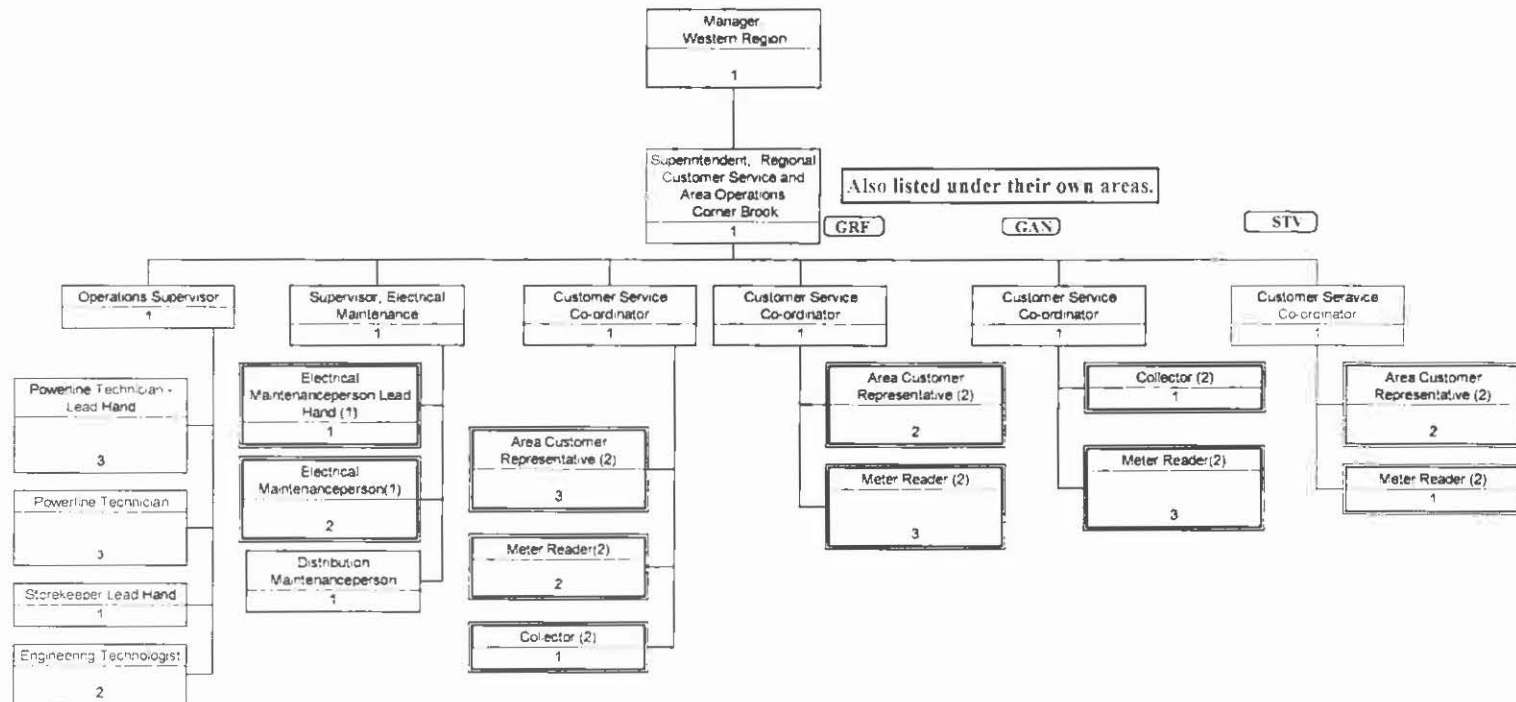


NEWFOUNDLAND POWER INC.

Engineering & Operations

Western Region

Area Operations - Corner Brook Area

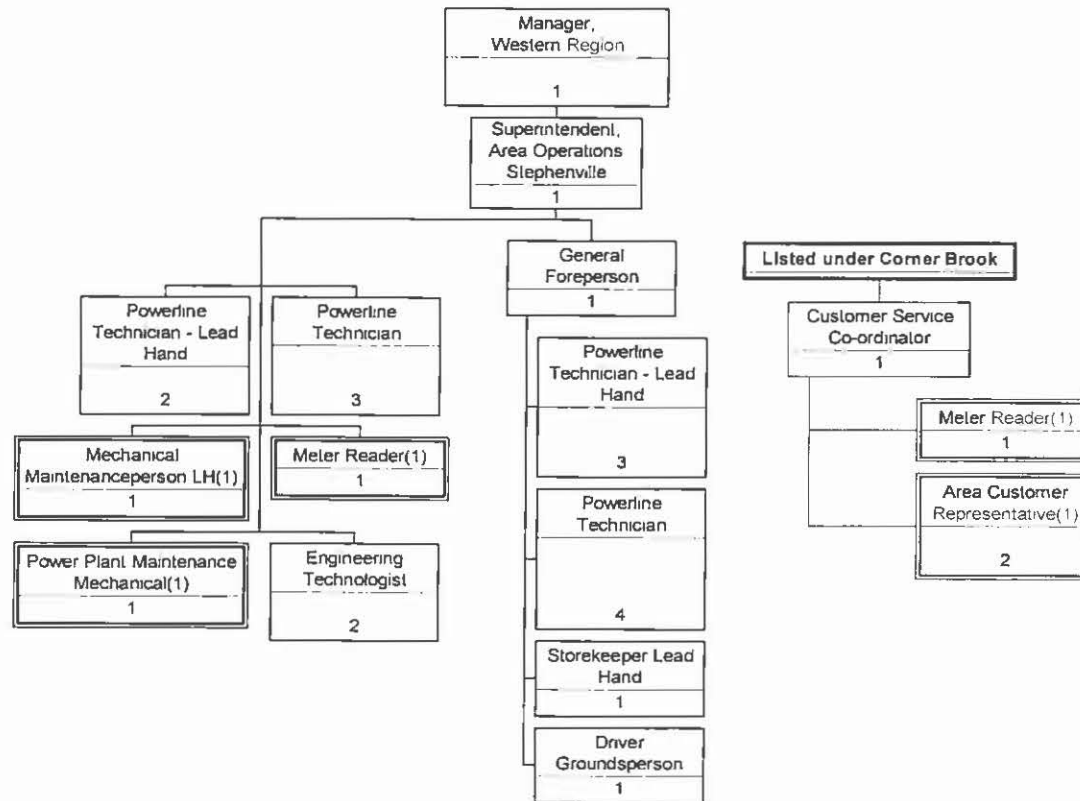


NEWFOUNDLAND POWER INC.

Engineering & Operations

Western Region

Area Operations - Stephenville Area



NEWFOUNDLAND POWER INC.

Engineering & Operations

WESTERN REGION

Transportation

