

1 Q. Sunnyside Replacement Equipment: Please verify that the Sunnyside T1 transformer
2 had 138kV breaker failure protection.

3

4

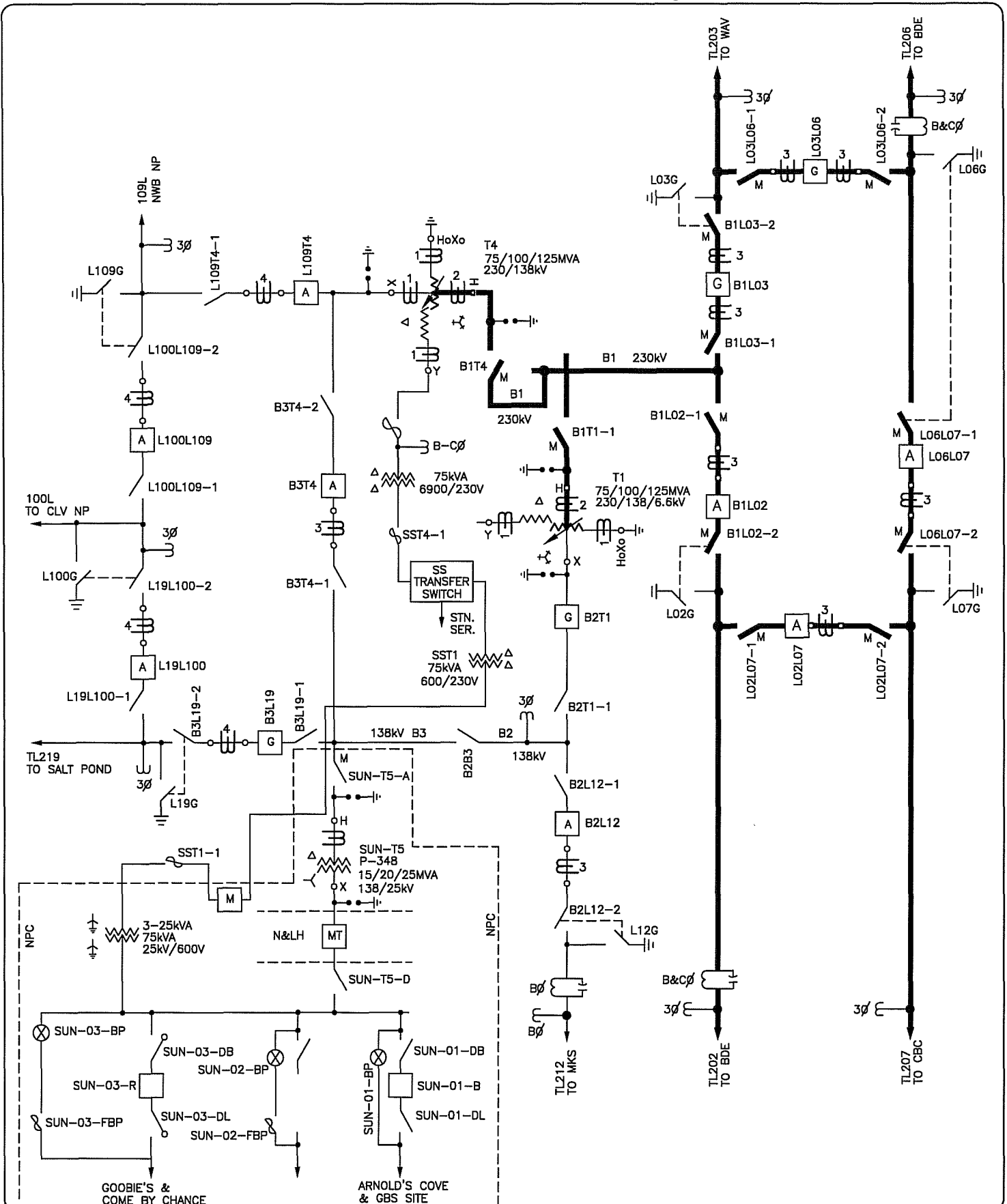
5 A. The trip (94T1) and lockout (86T1) relays for the Sunnyside T1 transformer
6 protection do operate into the 138 kV breaker failure protection for breakers B2T1,
7 L109T4 and B3T4. If either of these breakers fails to open, the following additional
8 breakers will be opened:

9

Failed 138 KV Breaker	Additional Breakers Tripped
B2T1	B2L12, B3L19, B3T4, B1L02, B1L03, L109T4
L109T4	L100L109, B3T4, B2T1, B1L02, B1L03
B3T4	B3L19, B2T1, B2L12, L109T4, B1L02, B1L03

10

11 Please see PR-PUB-NLH-025 Attachment 1, which is Sunnyside Terminal Station
12 System Operating Diagram for breaker designations.



DRAWN BY: J.T.	REVISED BY: D.R.	NEWFOUNDLAND AND LABRADOR HYDRO	DWG NO SSD-1
APPROVED BY: D. KING		SYSTEM OPERATING DIAGRAM	REV NO
DATE: 2015/01/23		SUNNYSIDE TERMINAL STATION	19