

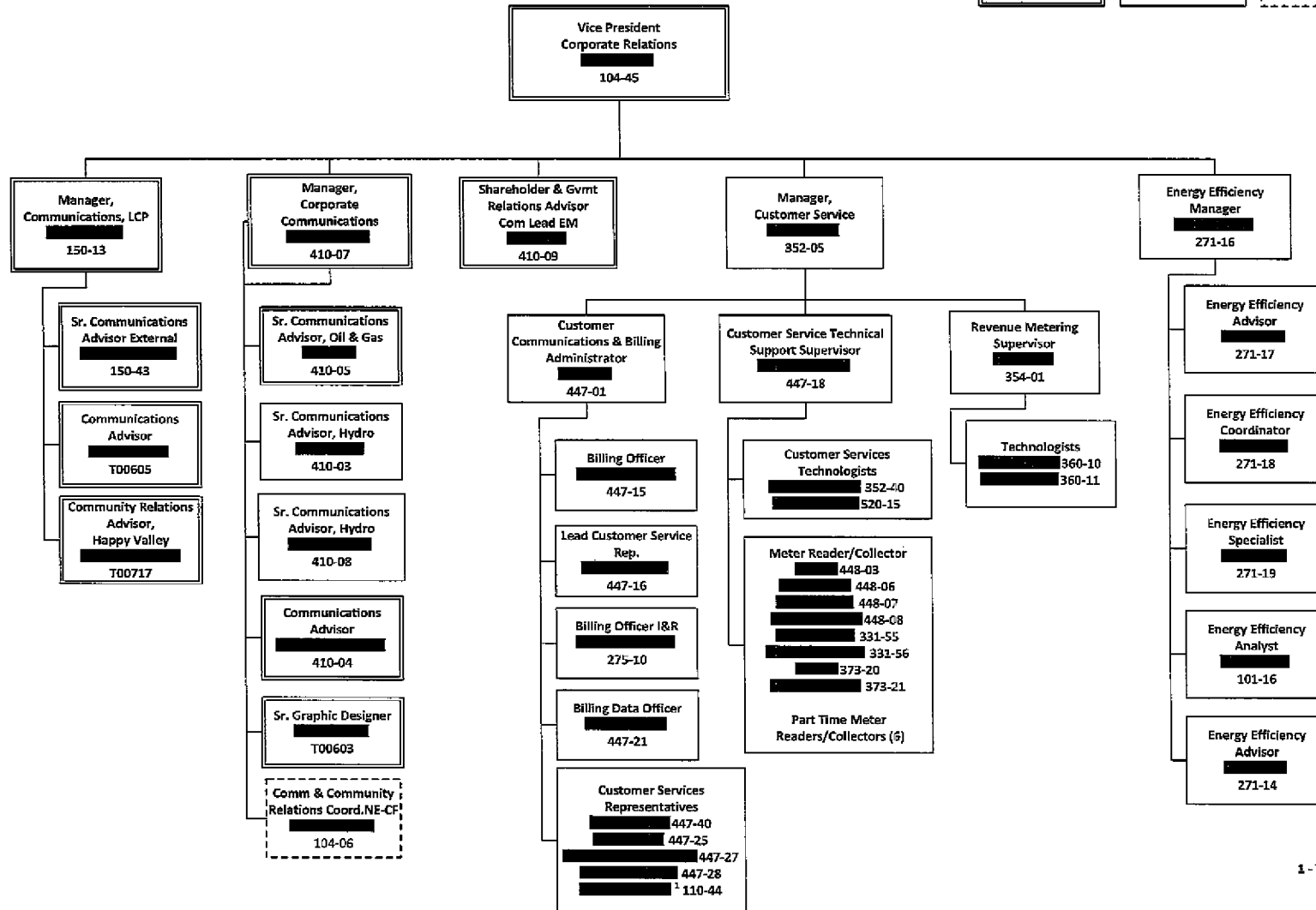
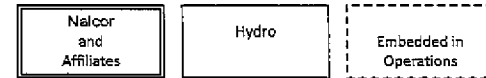
Undertaking 27

Undertaking to provide the charts (internal charts with dotted lines like Finance) for the other divisions (within Hydro).

Attached please find the organization charts as of October 2015 for Corporate Relations (Undertaking 27, Attachment 1), Finance (Undertaking 27, Attachment 2), and Project Execution and Technical Service (Undertaking 27, Attachment 3).

A4

Corporate Relations

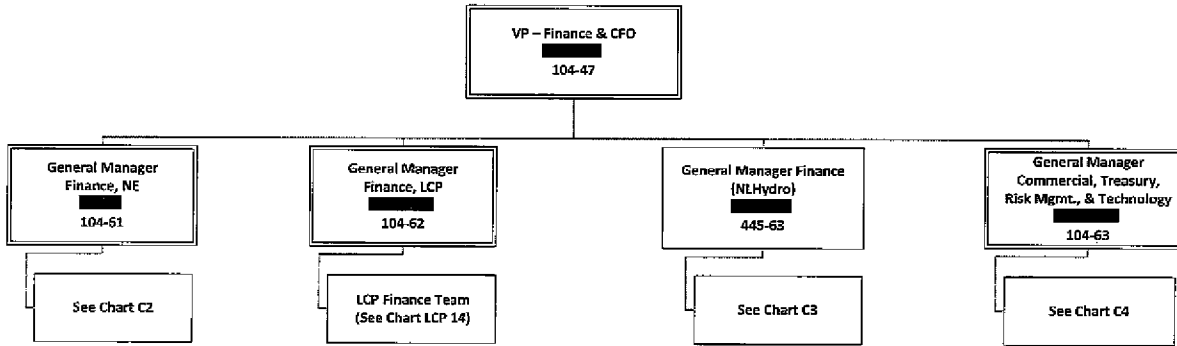


C1

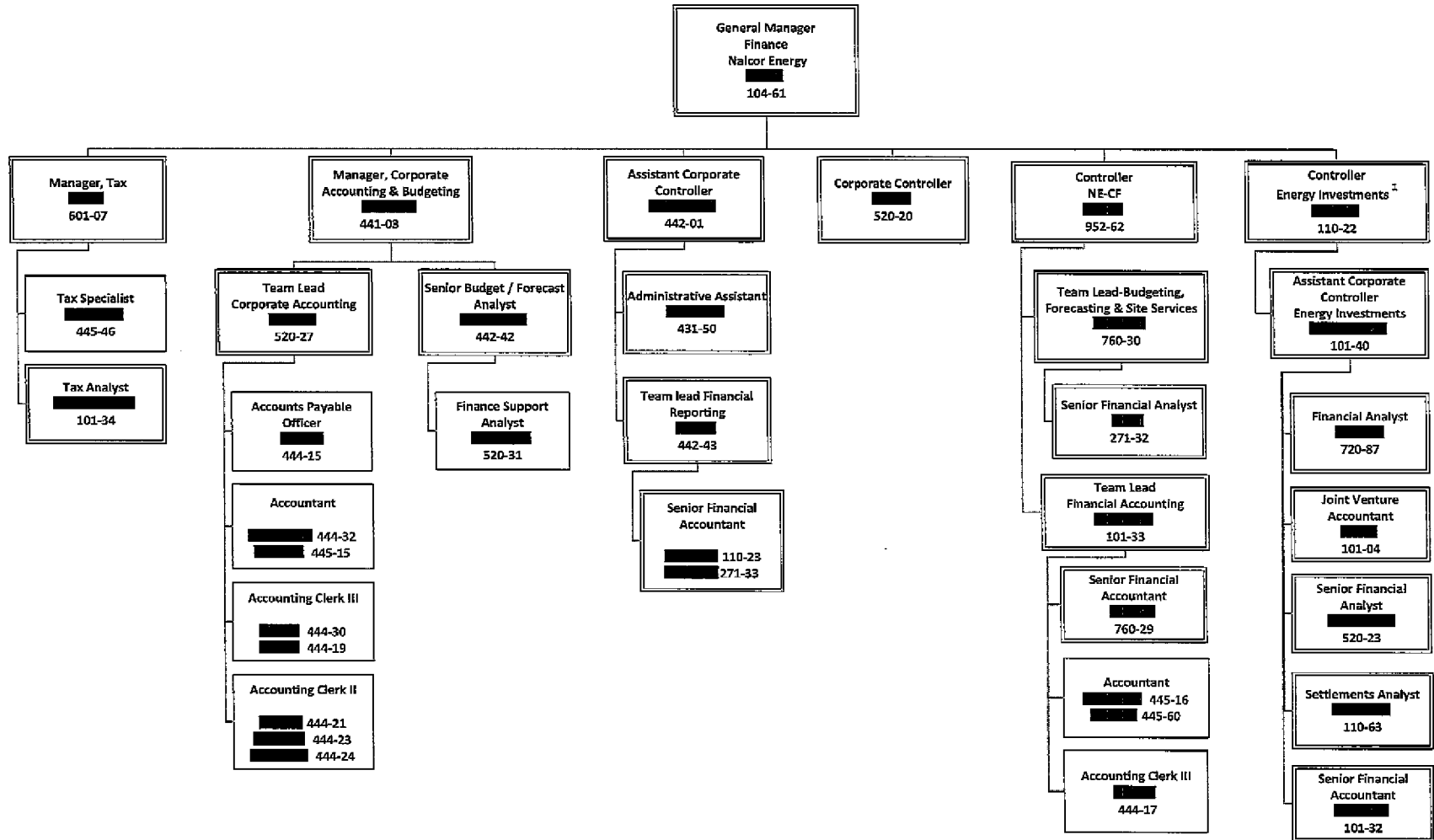
Finance/CFO
(1 of 6)

Nalcor
and
Affiliates

Hydro



Finance/CFO
Nalcor Energy
(2 of 6)



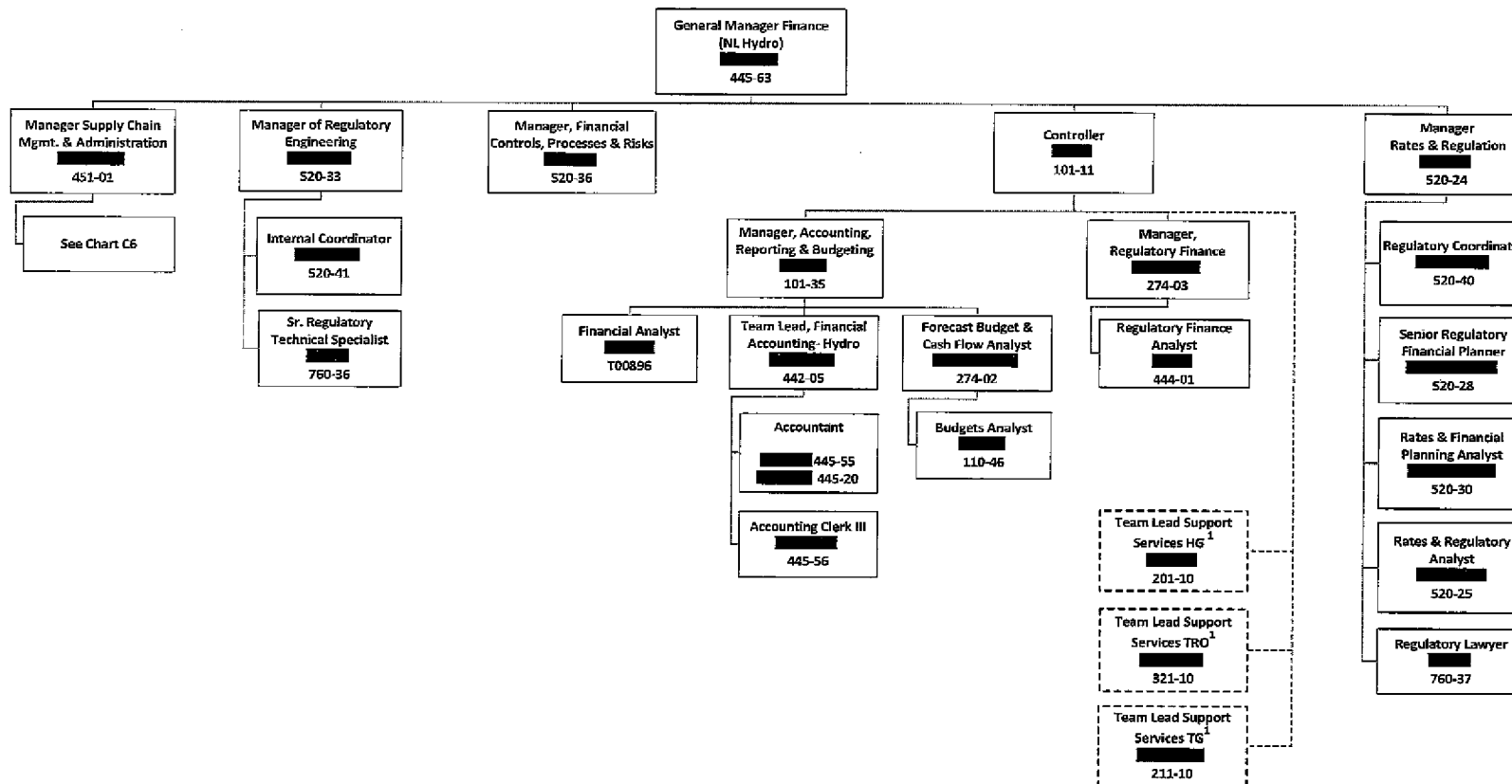
C3

Finance/CFO
NL Hydro
(3 of 6)

Nalcor
and
Affiliates

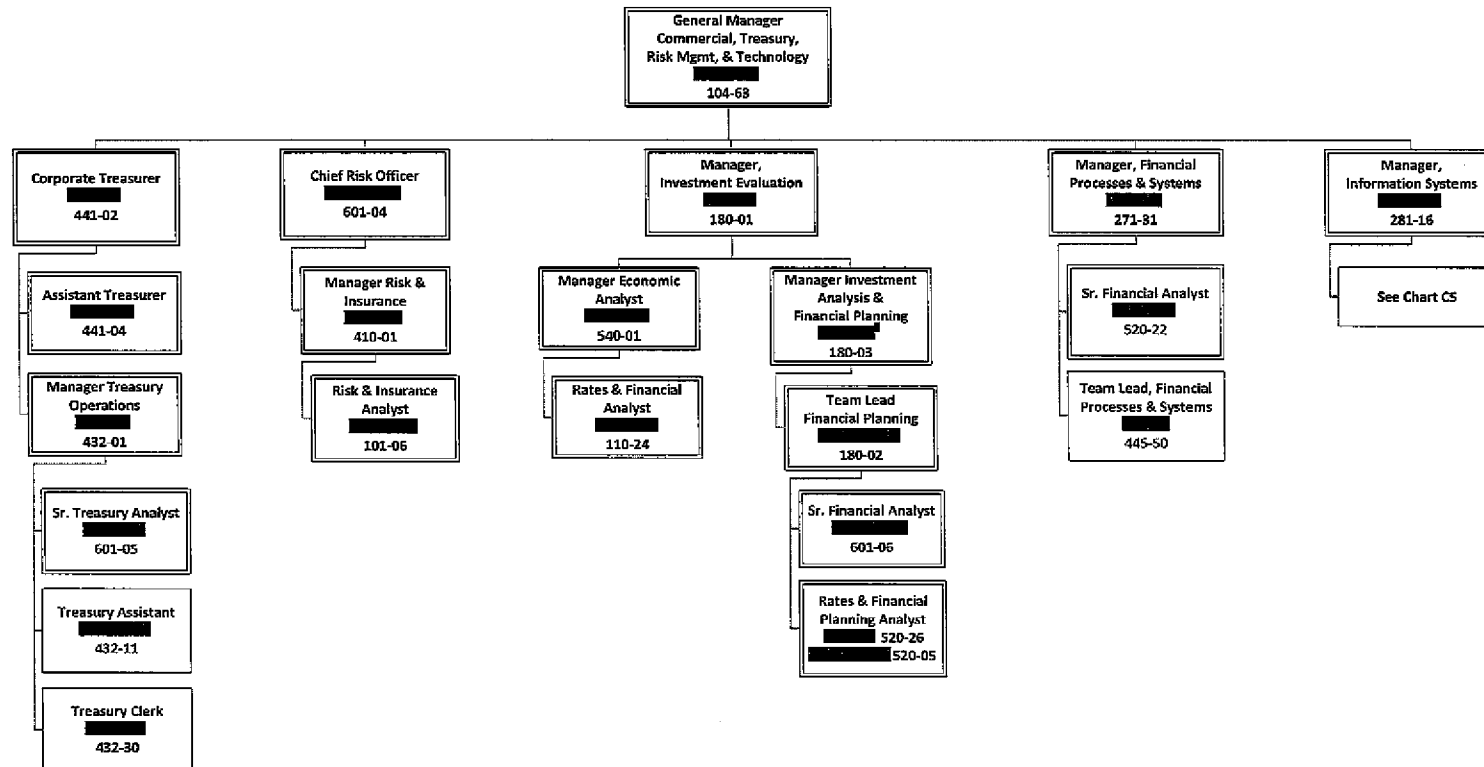
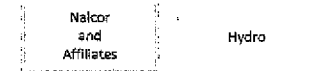
Hydro

Embedded in
Operations



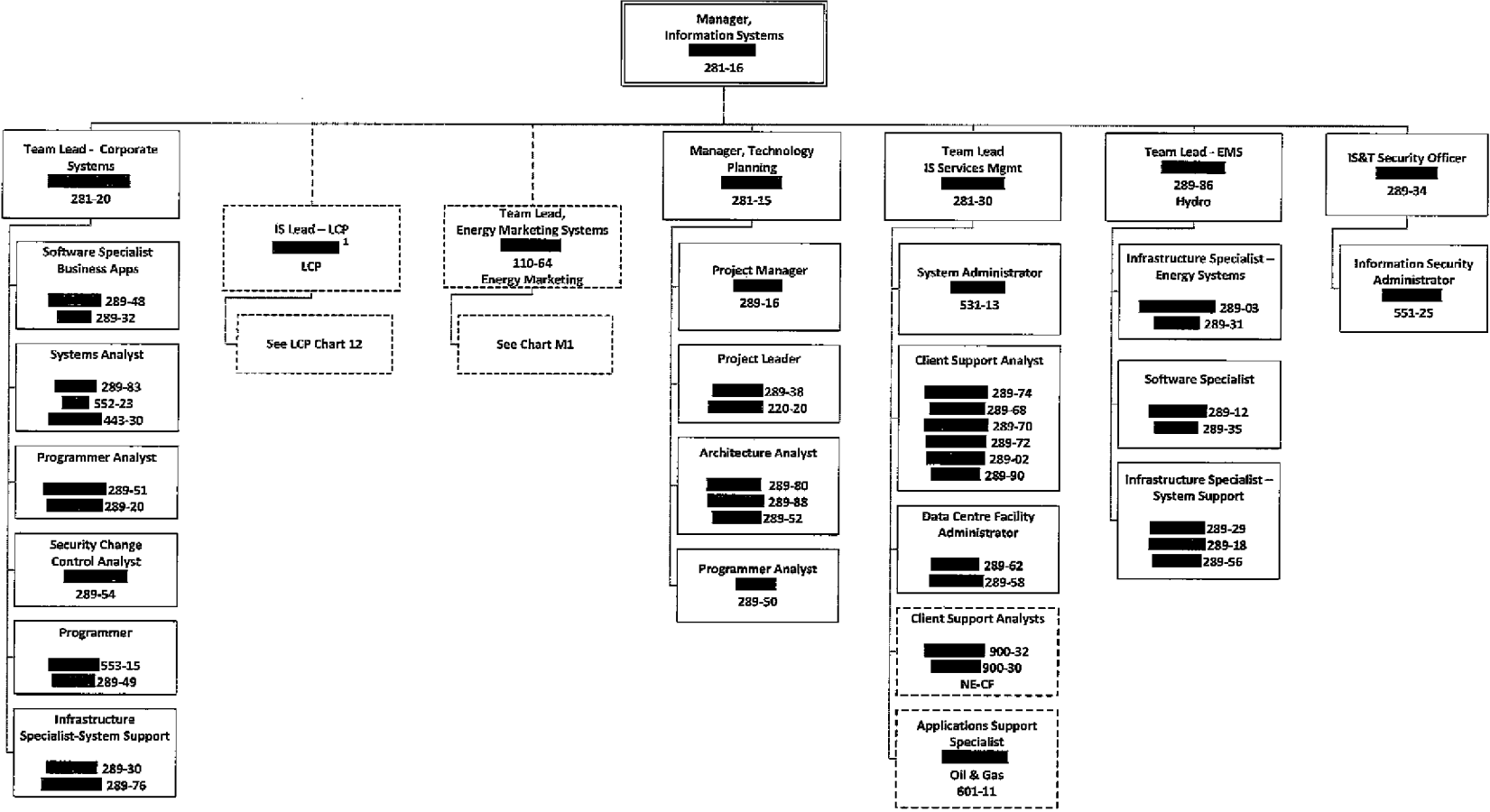
C4

Finance/CFO
Commercial, Treasury, Risk and Insurance
(4 of 6)



C5

Finance/CFD
(5 of 6)
Information Systems

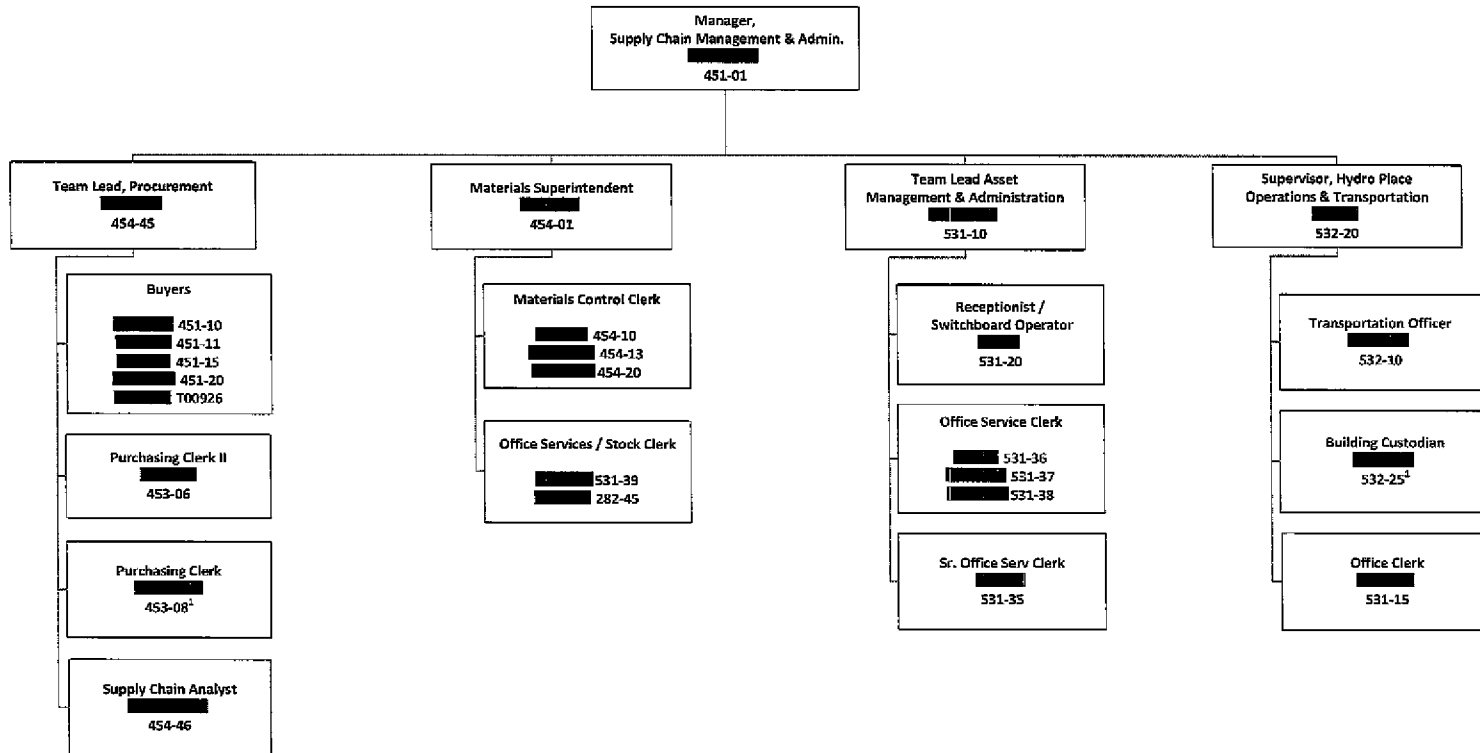


Nalcor
and
Affiliates

Hydro

C6

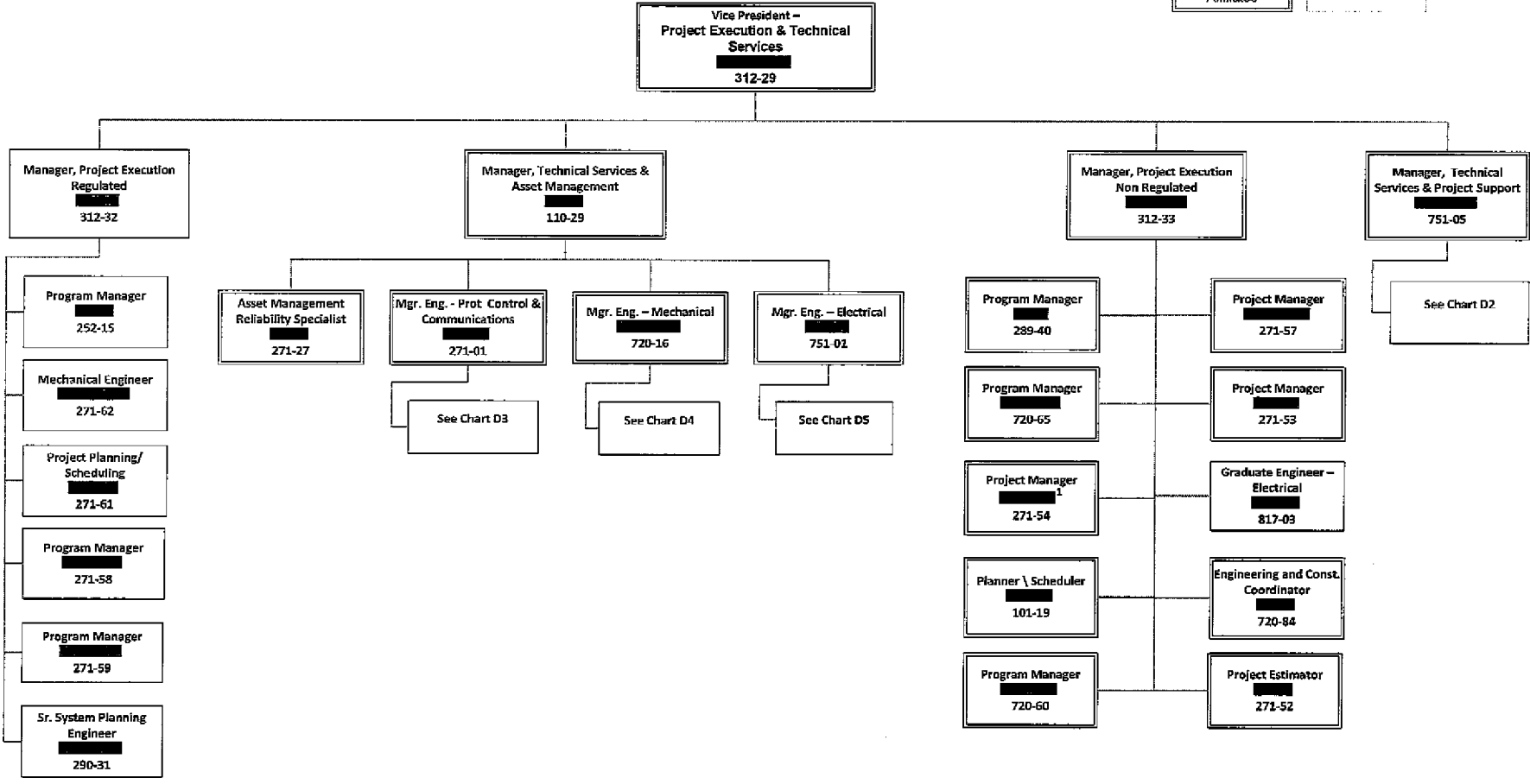
Finance/CFO
(6 of 6)
Supply Chain Management



D1

Project Execution & Technical Services

Nalcor and Affiliates Hydro



D2

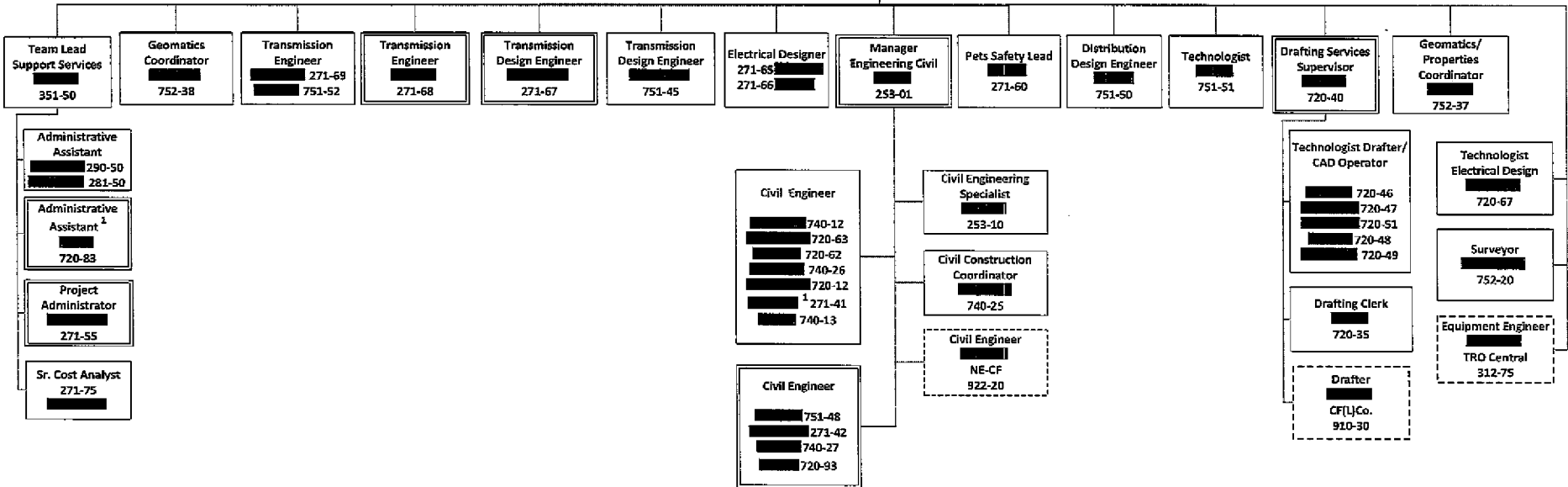
Transmission & Distribution Engineering

Naicor and Affiliates

Hydro

Embedded in Operations

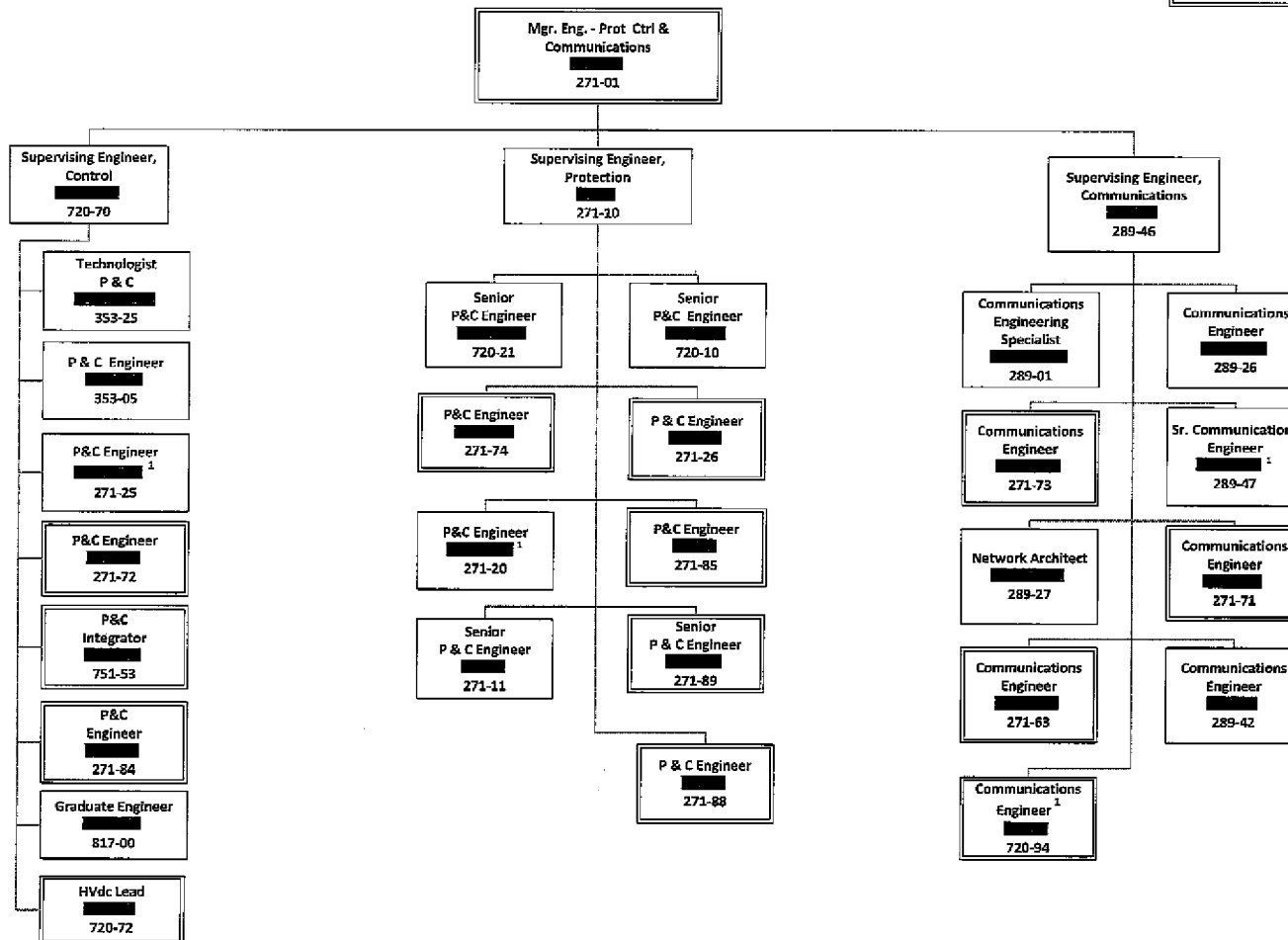
Manager, Technical Services & Project Support
751-05



D3

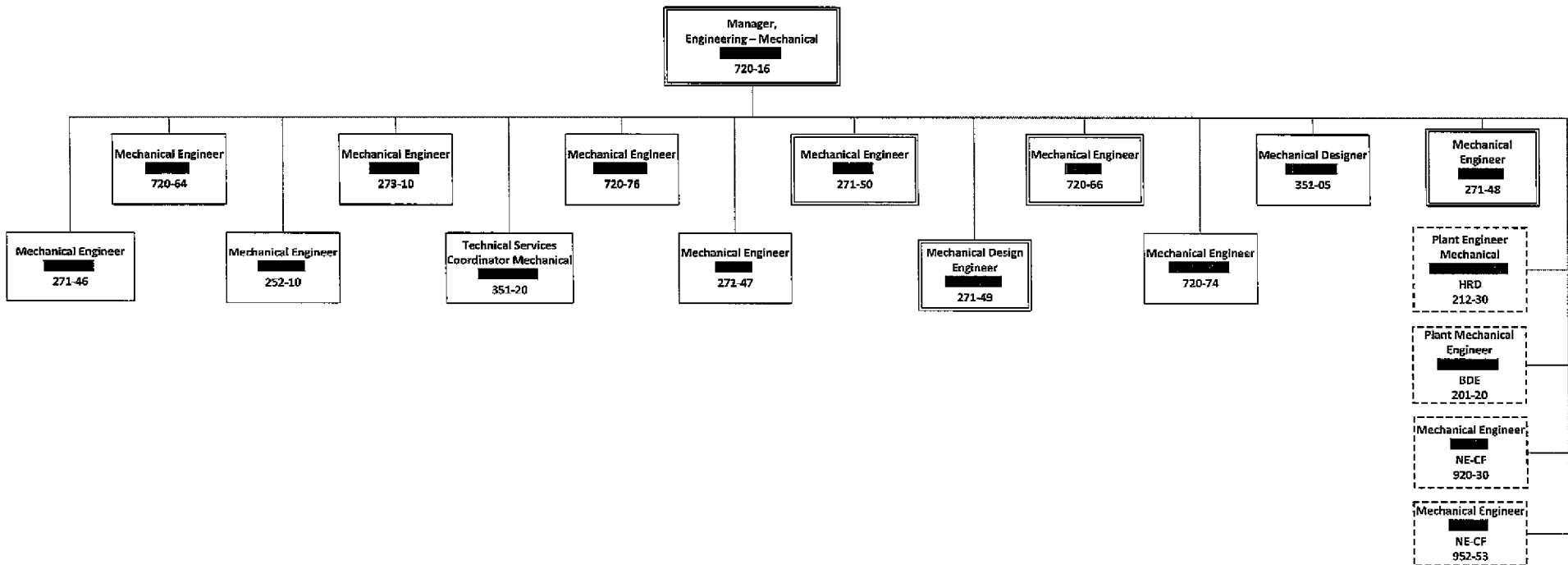
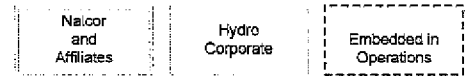
Protection, Control & Communications Engineering

Neicor and Affiliates Hydro



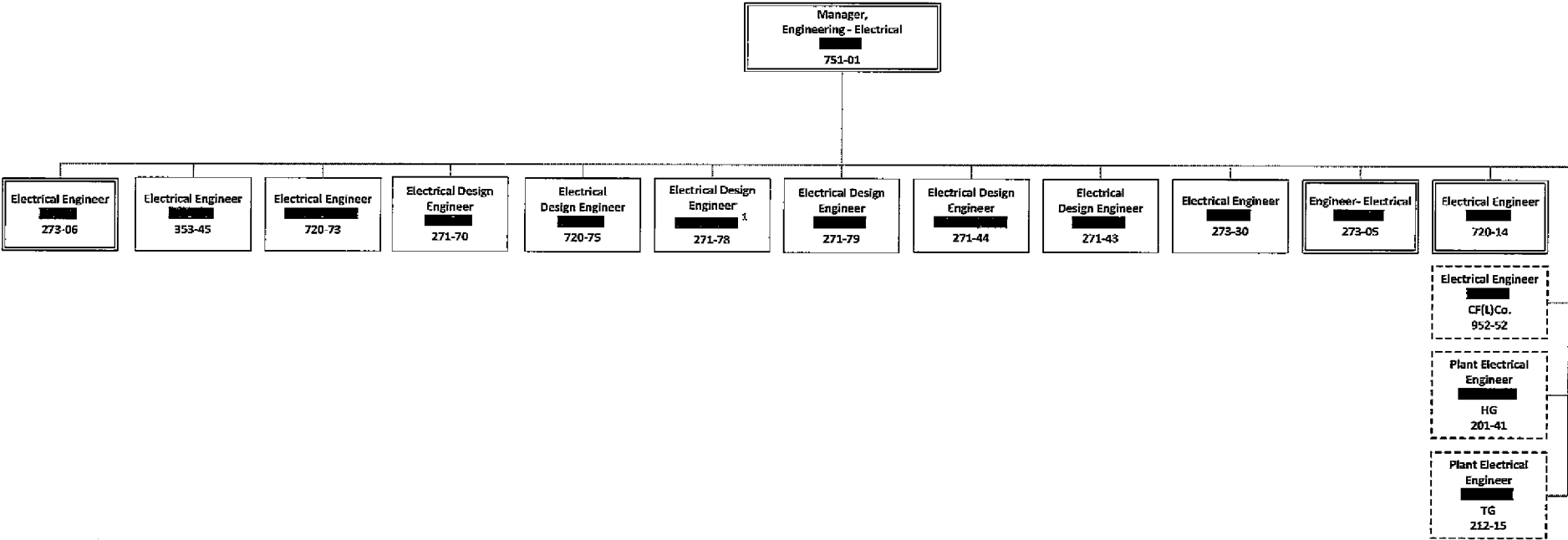
D4

Mechanical Engineering



D5

Electrical Engineering



)

)

)