

1 Q. **2013 General Rate Application, Intercompany Charges and Shared Services**

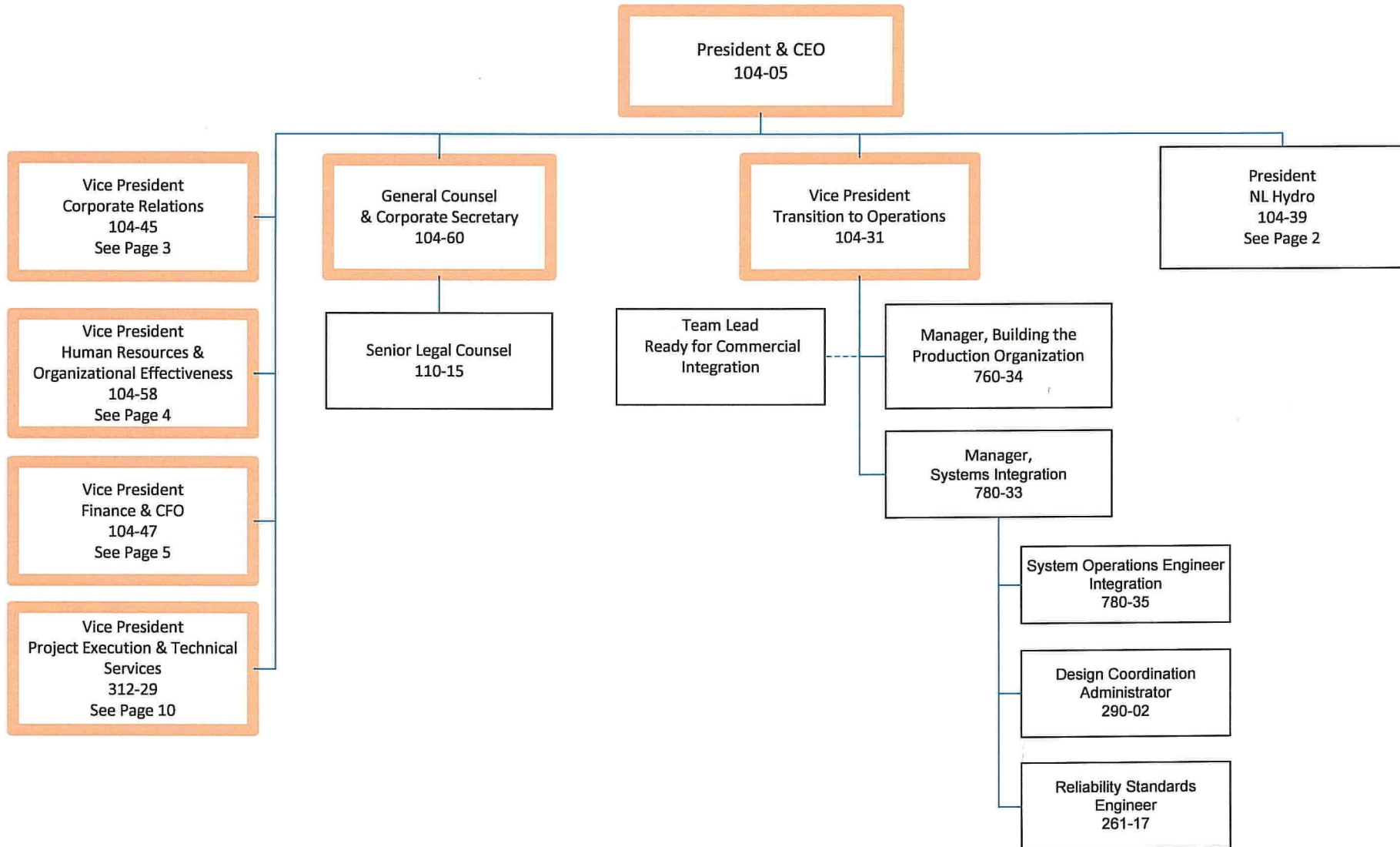
2 Exhibit 1 describes the current corporate structure for Nalcor and Hydro. Provide a  
3 complete organization chart that outlines the corporate structure of Hydro only.  
4

5

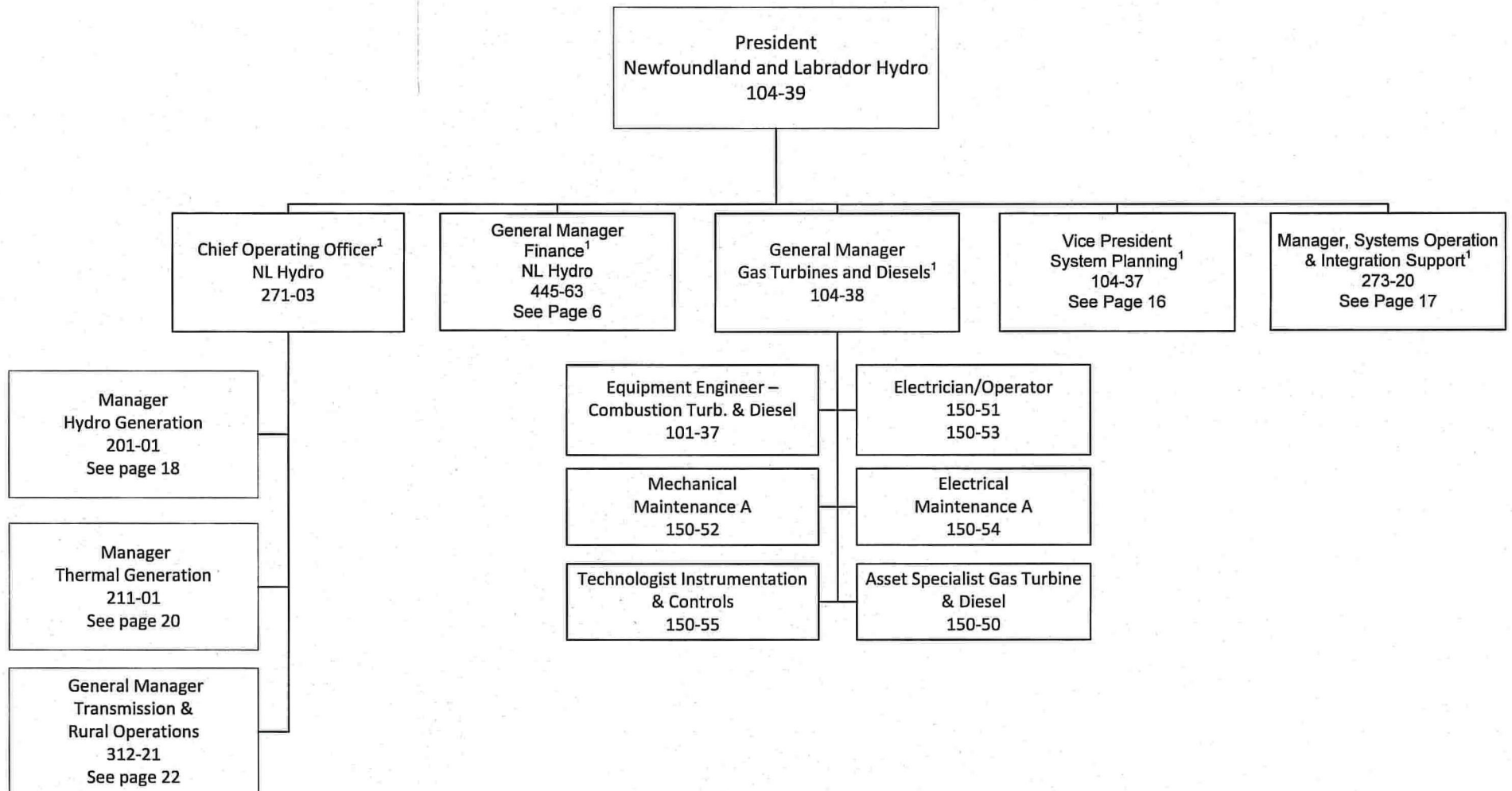
6

7 A. PUB-NLH-138 Attachment 1 (Revision 4) (pages 1 – 28) provides a complete  
8 organization chart outlining the structure of Hydro. Page 2 of 28 reflects the  
9 interim transitional structure currently reporting to the President, Newfoundland  
10 and Labrador Hydro. Hydro will present the new structure reporting to the  
11 President, Newfoundland and Labrador Hydro by second quarter of 2016. The  
12 Nalcor Group of Companies has a matrix organization structure and various Hydro  
13 positions report to Nalcor management positions. Therefore, various Nalcor  
14 positions were included to reflect the reporting relationships. These management  
positions have been identified on the organization charts.

## Leadership Team

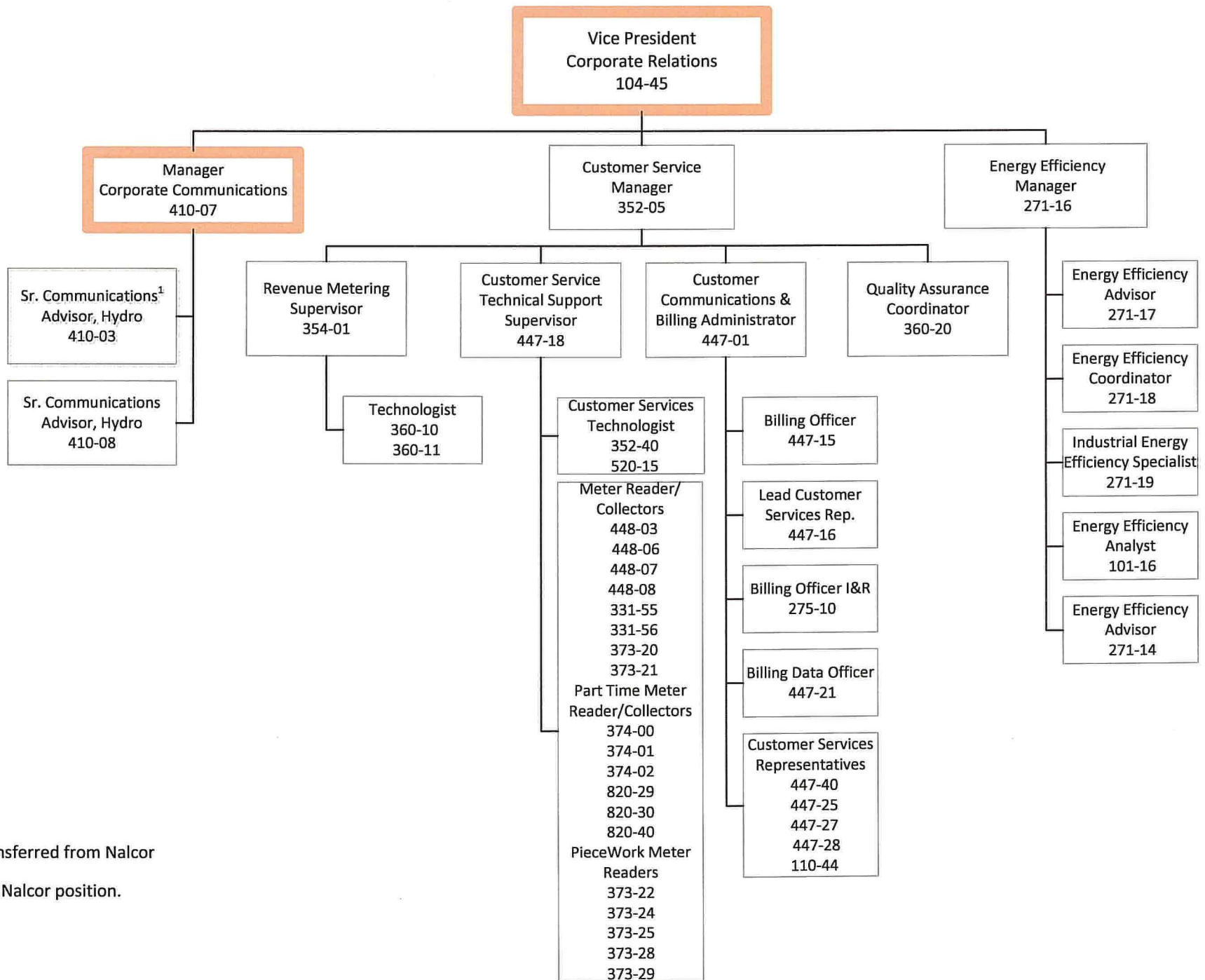


## Regulated Operations



¹Reflects current interim transitional structure. New future state organizational structure to be forwarded within second quarter of 2016.

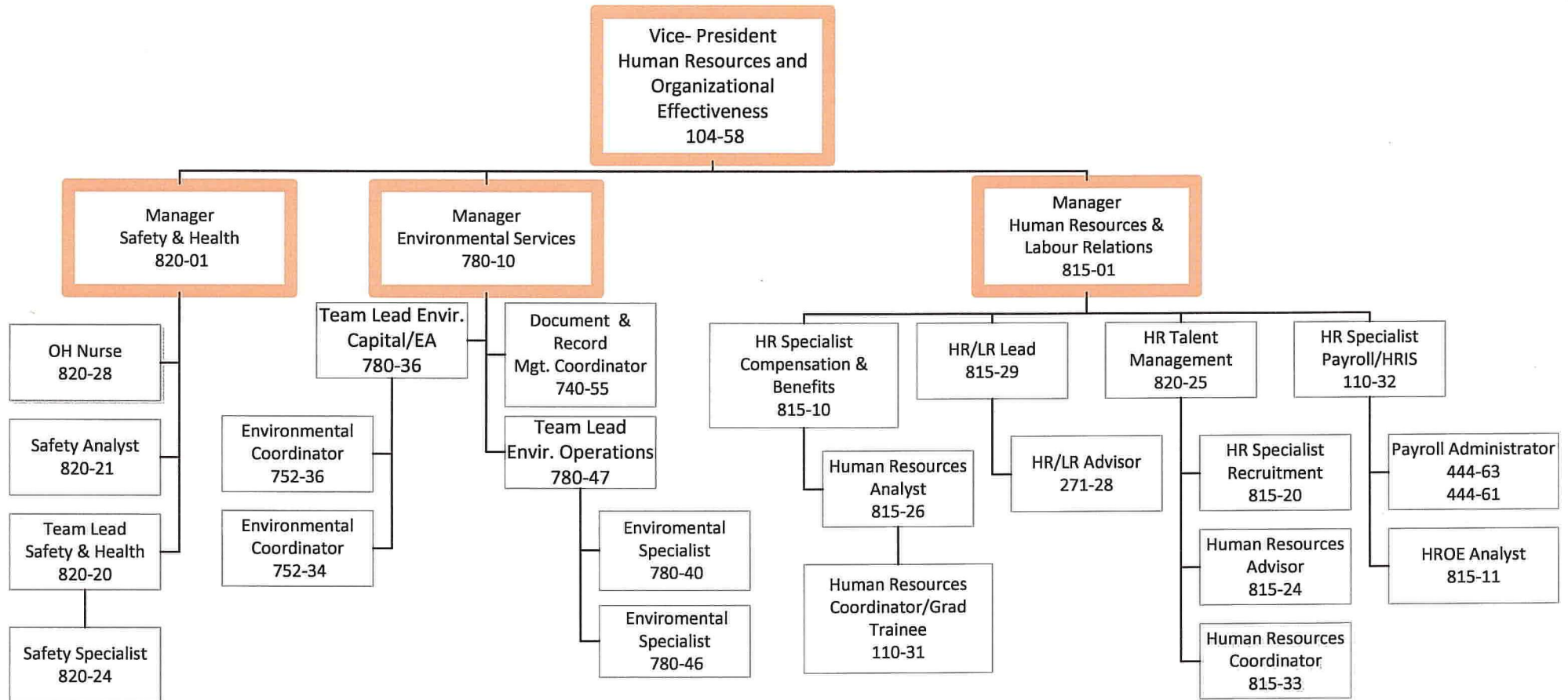
## Corporate Relations



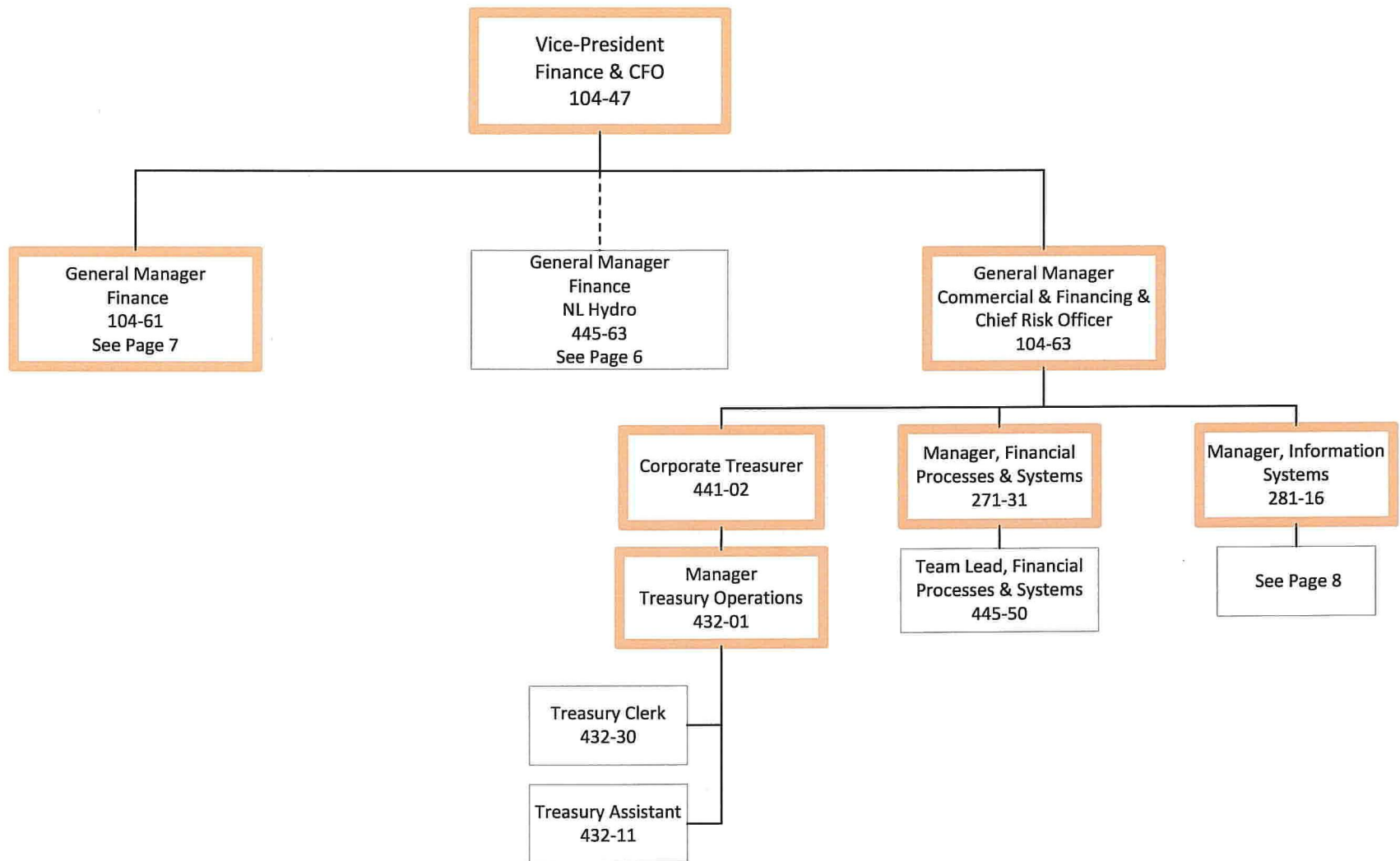
1. Transferred from Nalcor

 Nalcor position.

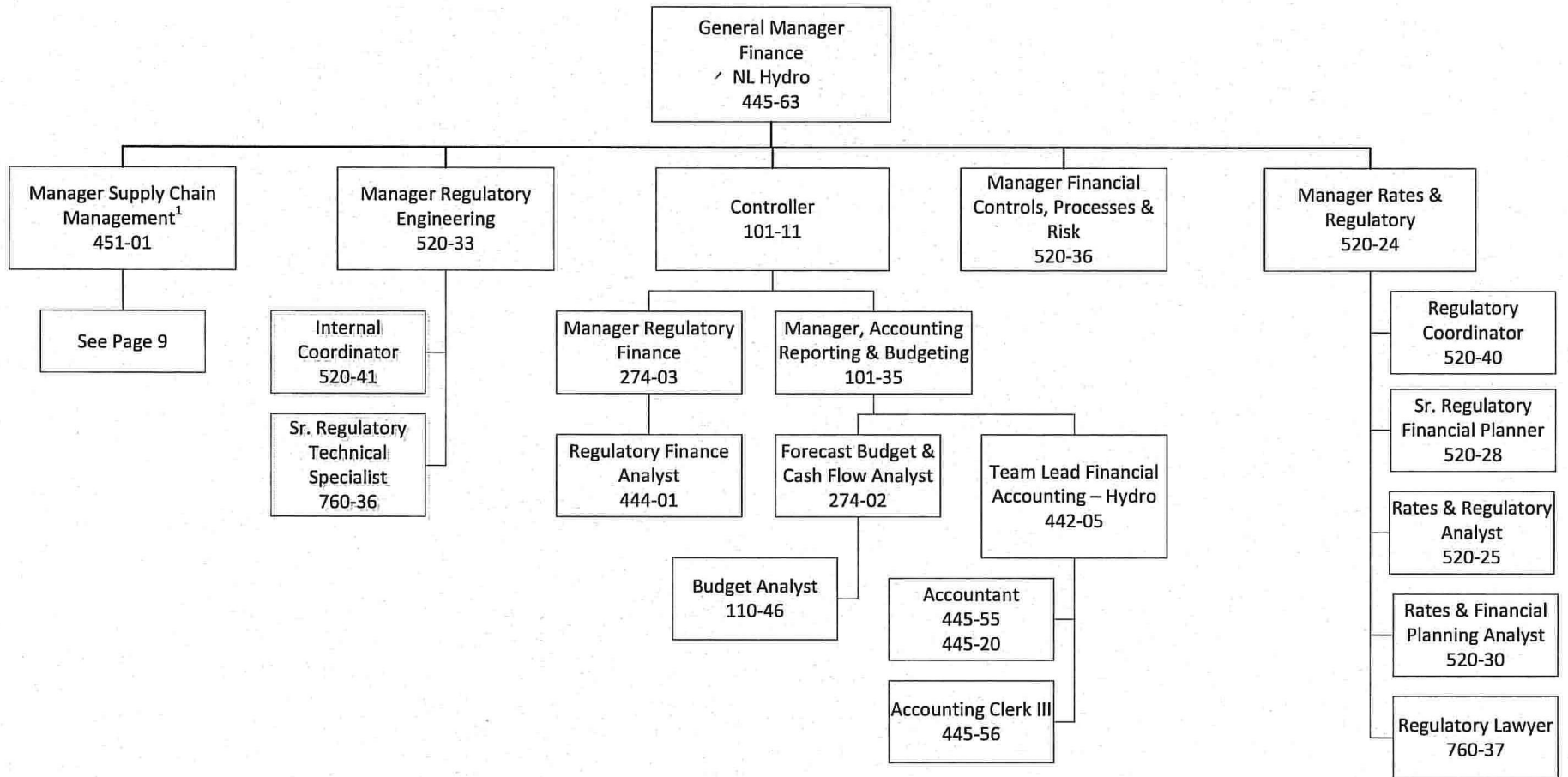
# Human Resources & Organizational Effectiveness Division



# Finance Division

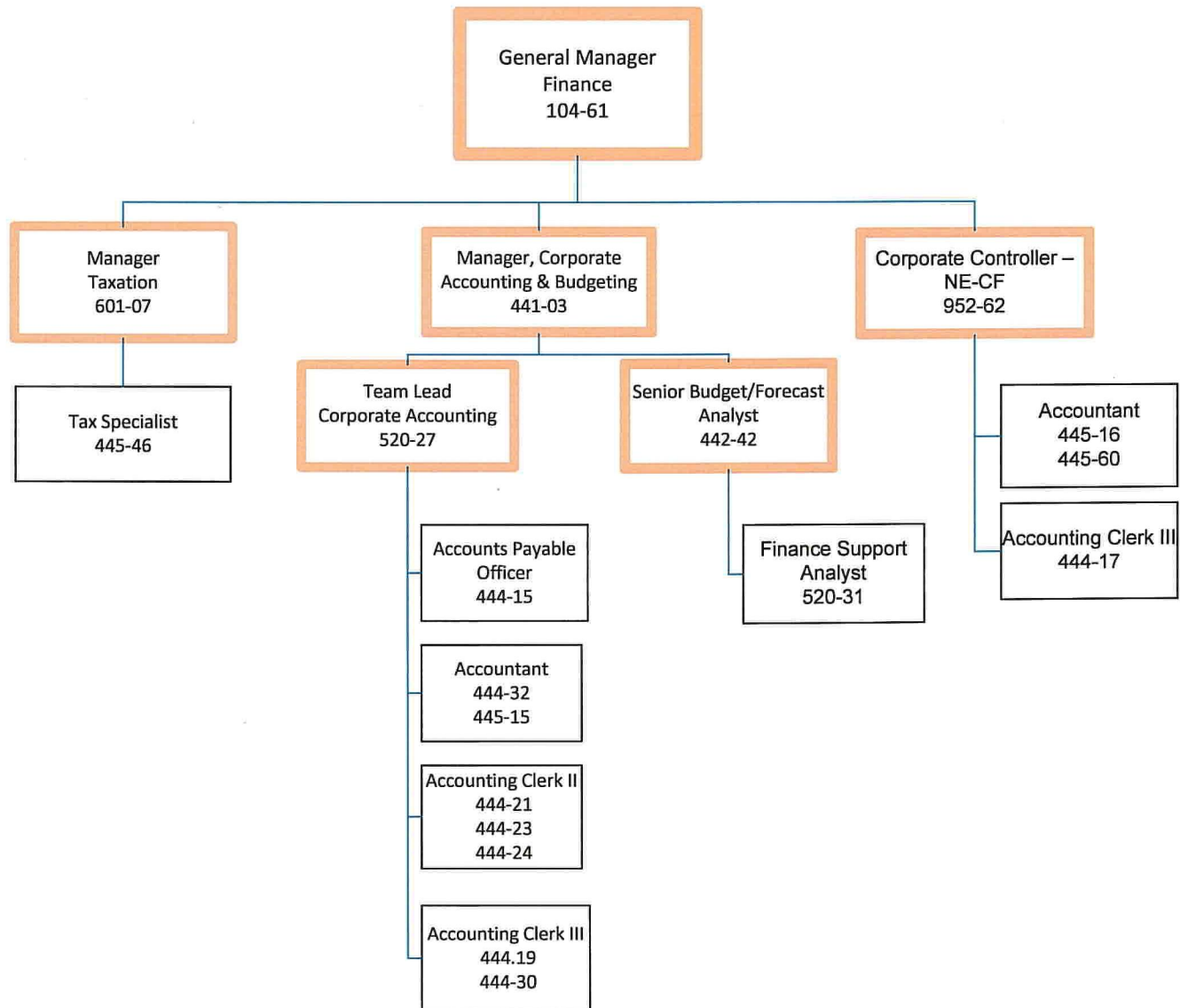






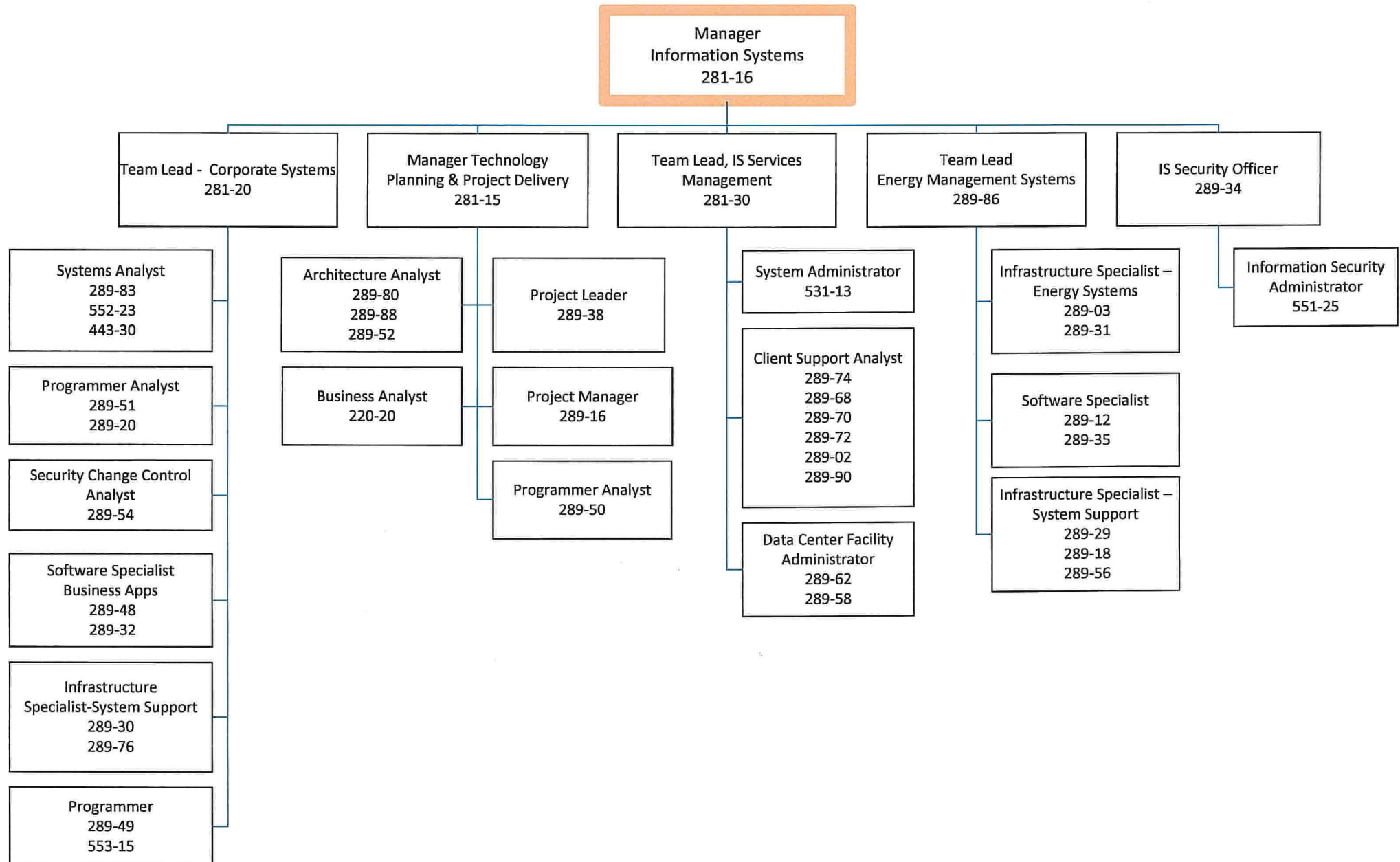
1. Transferred from Nalcor

**Finance Division 3 of 5**

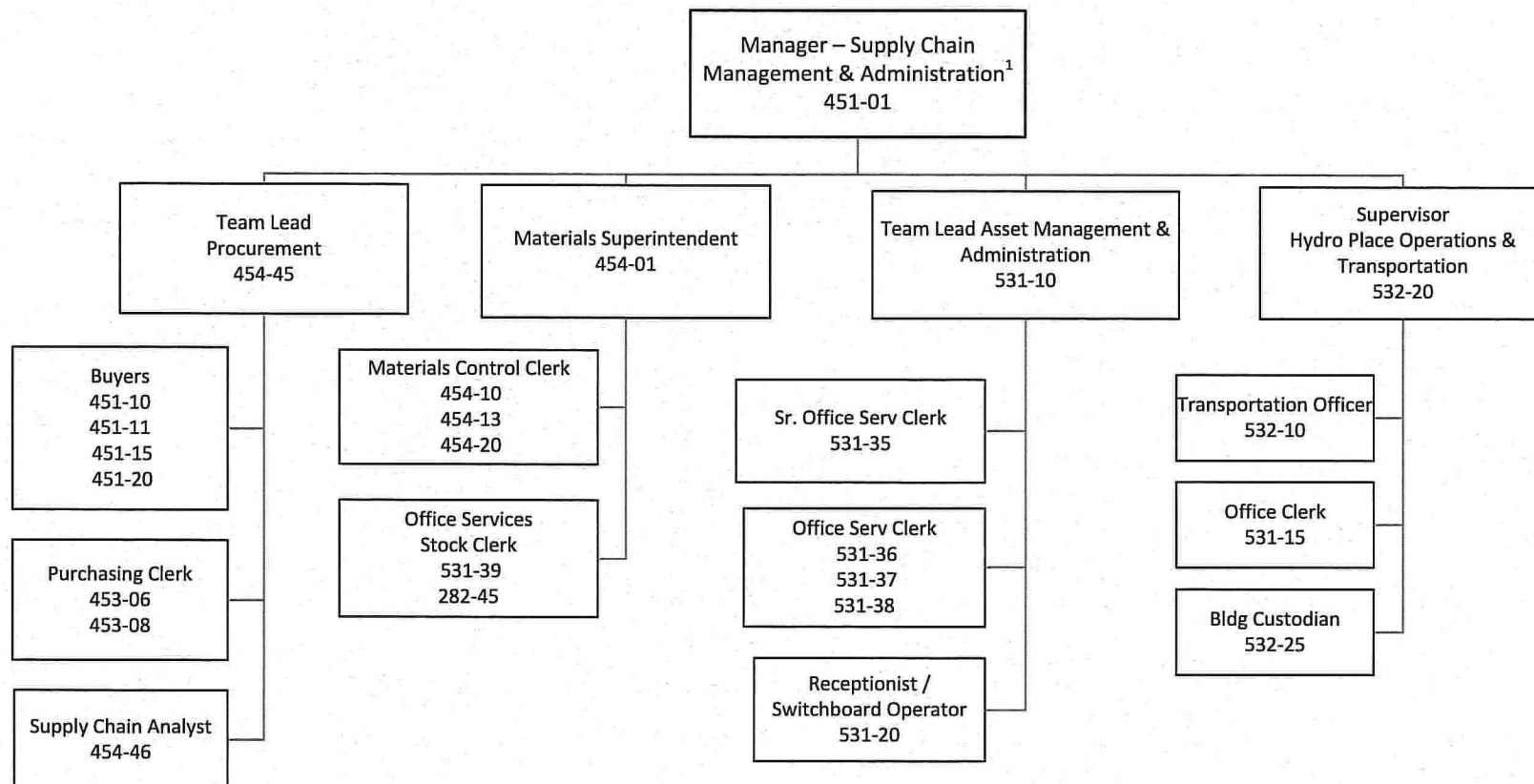




Finance Division 4 of 5

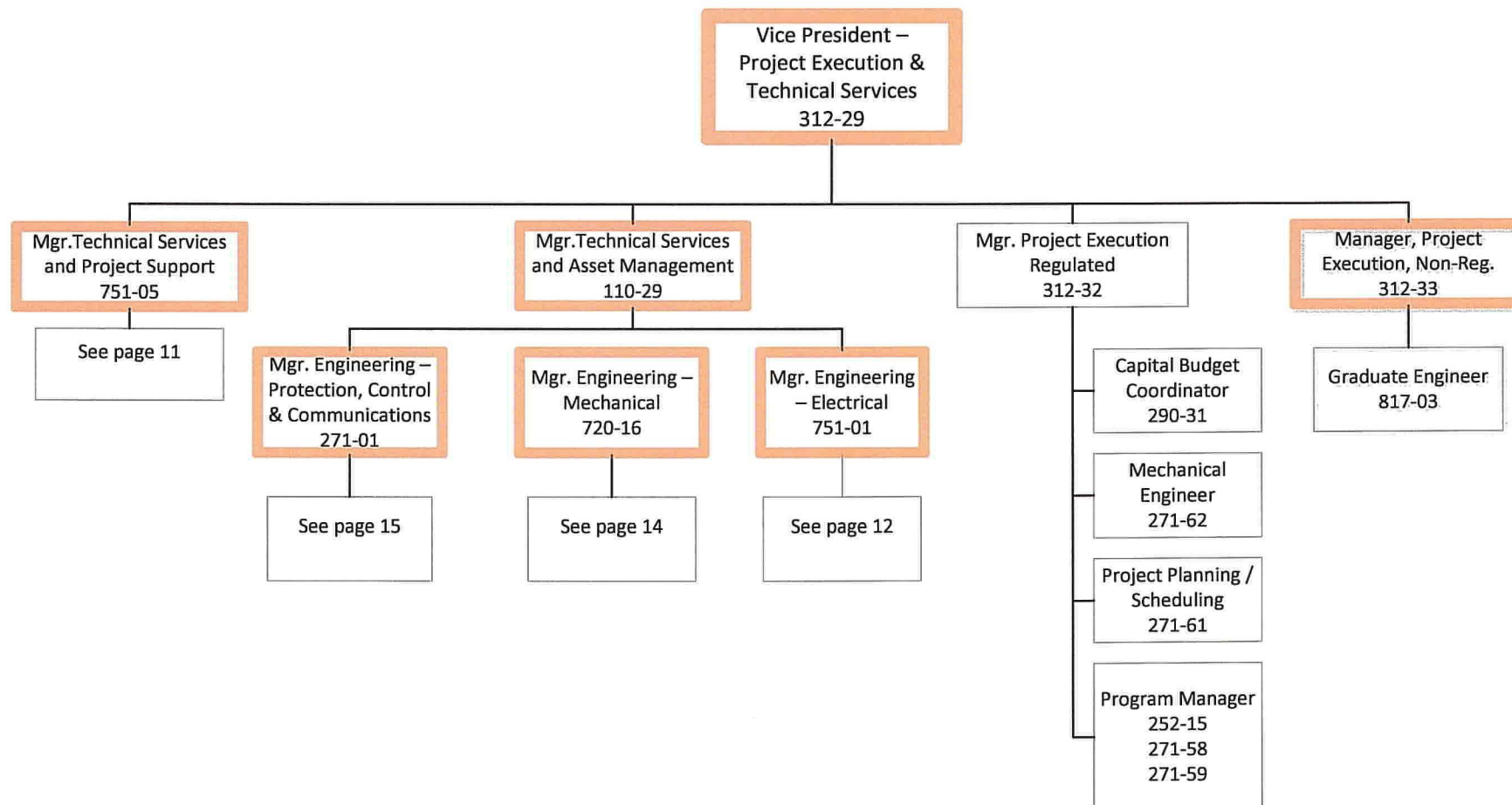


Finance Division 5 of 5

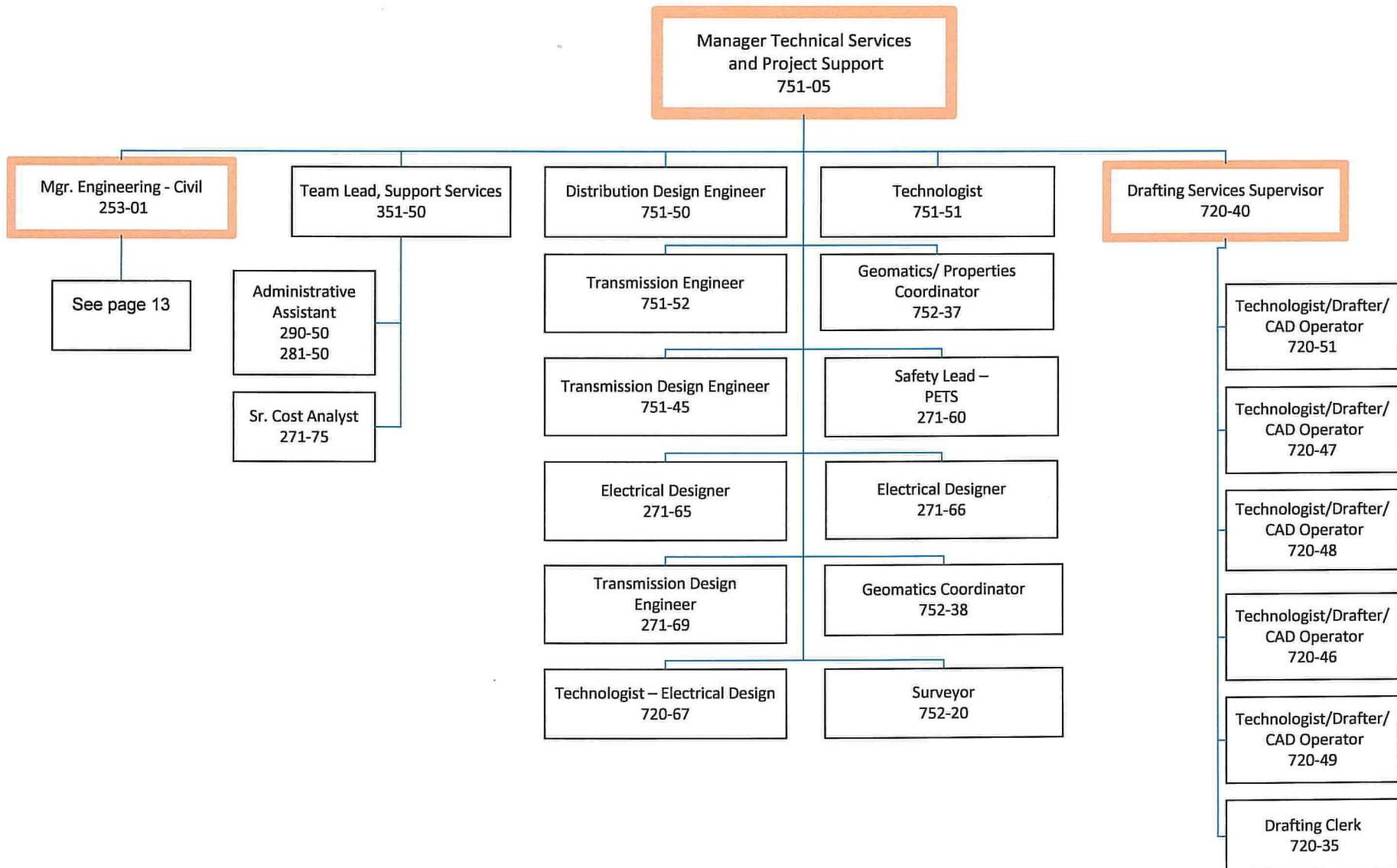


1. Transferred from Nalcor

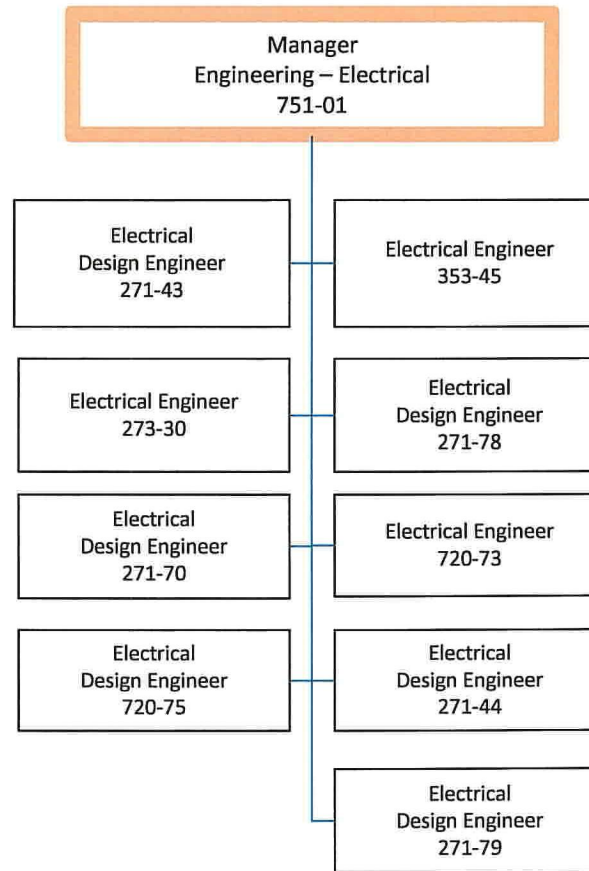
## PROJECT EXECUTION &amp; TECHNICAL SERVICES (PETS)



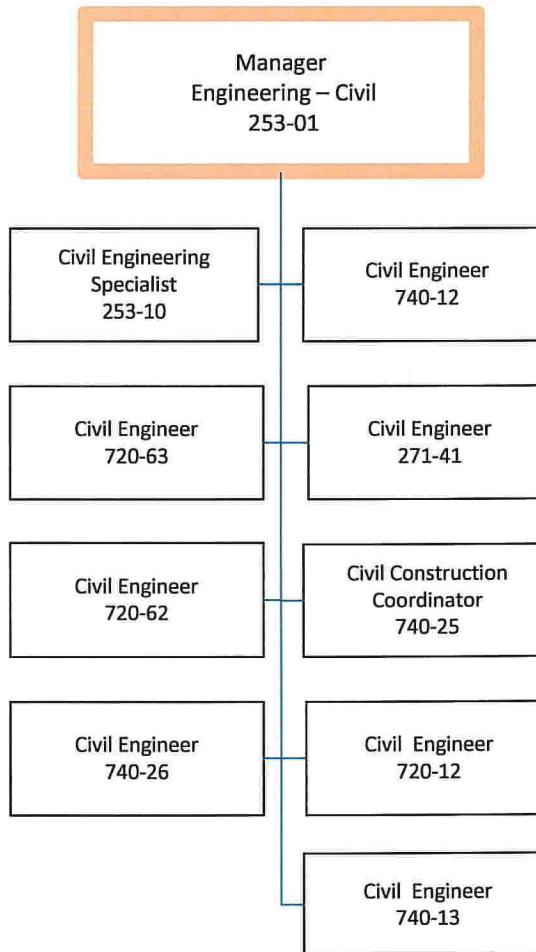
Engineering and Project Support



Electrical Engineering

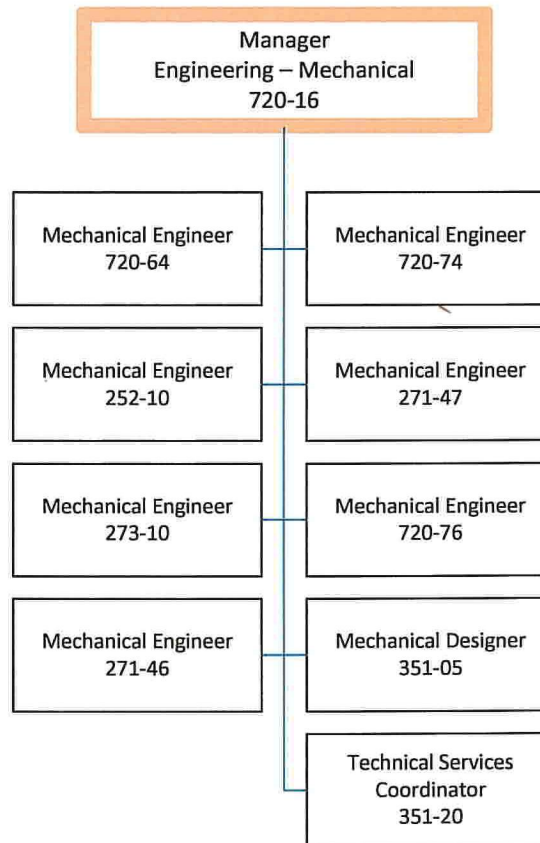


Civil Engineering



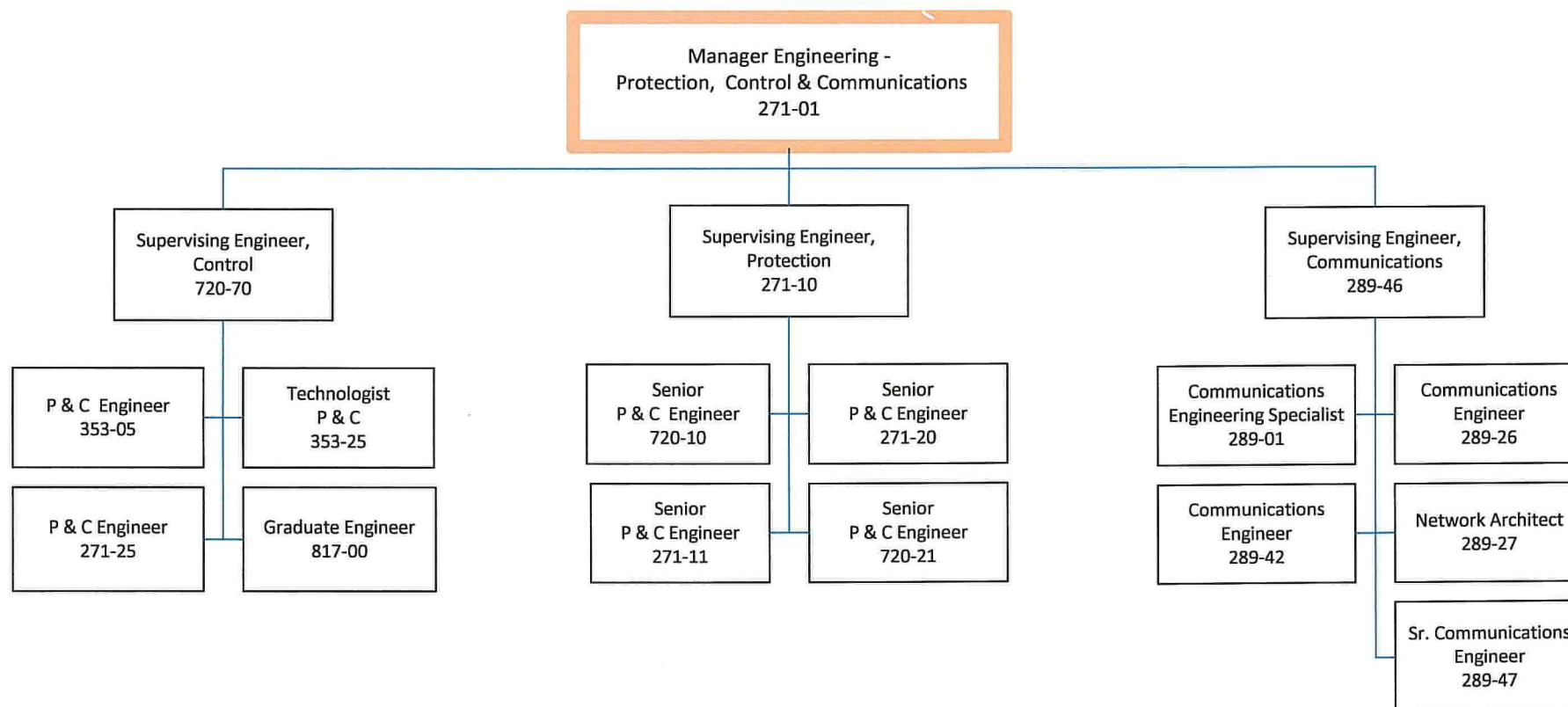


Mechanical Engineering

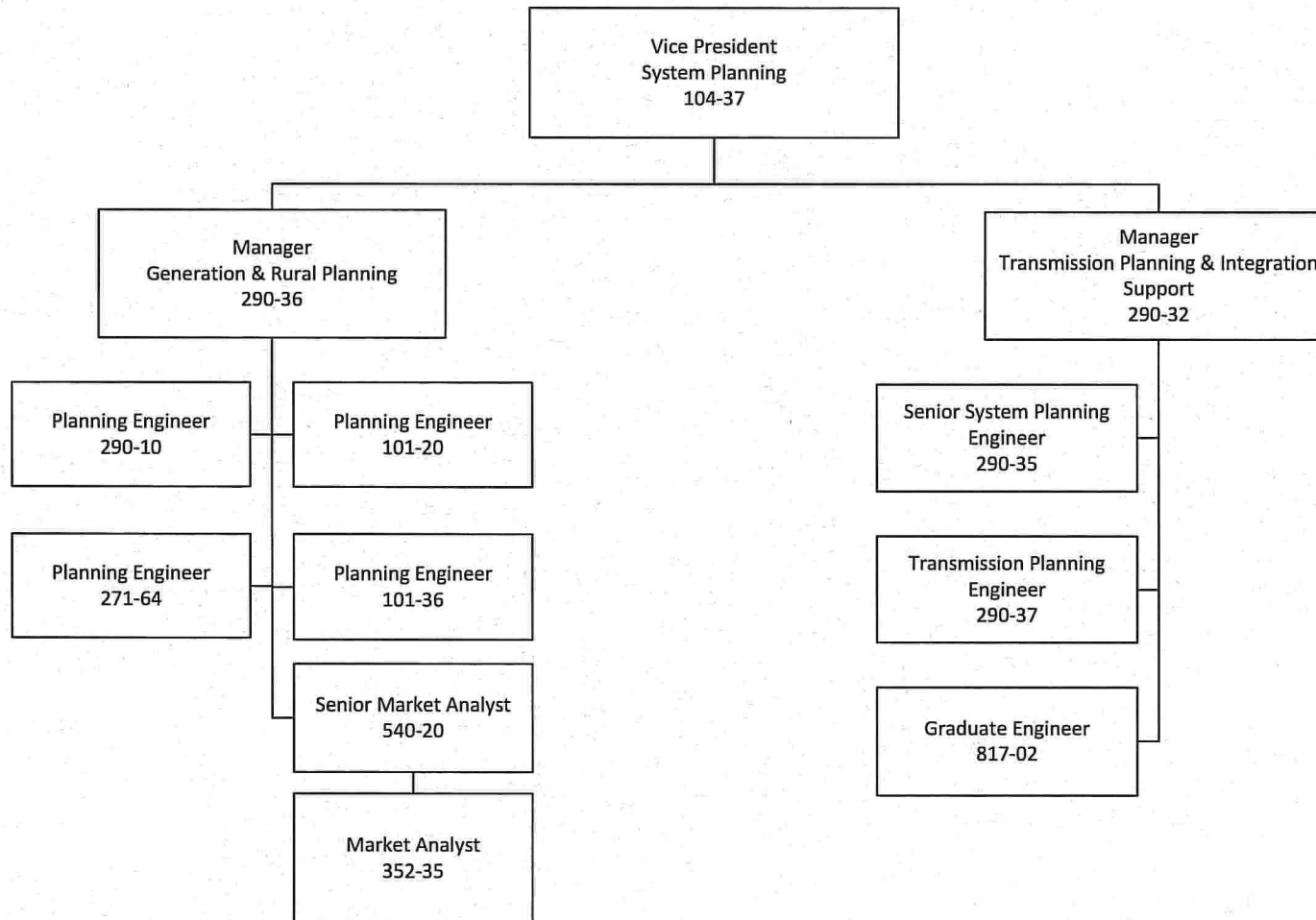


Project Execution & Technical Services

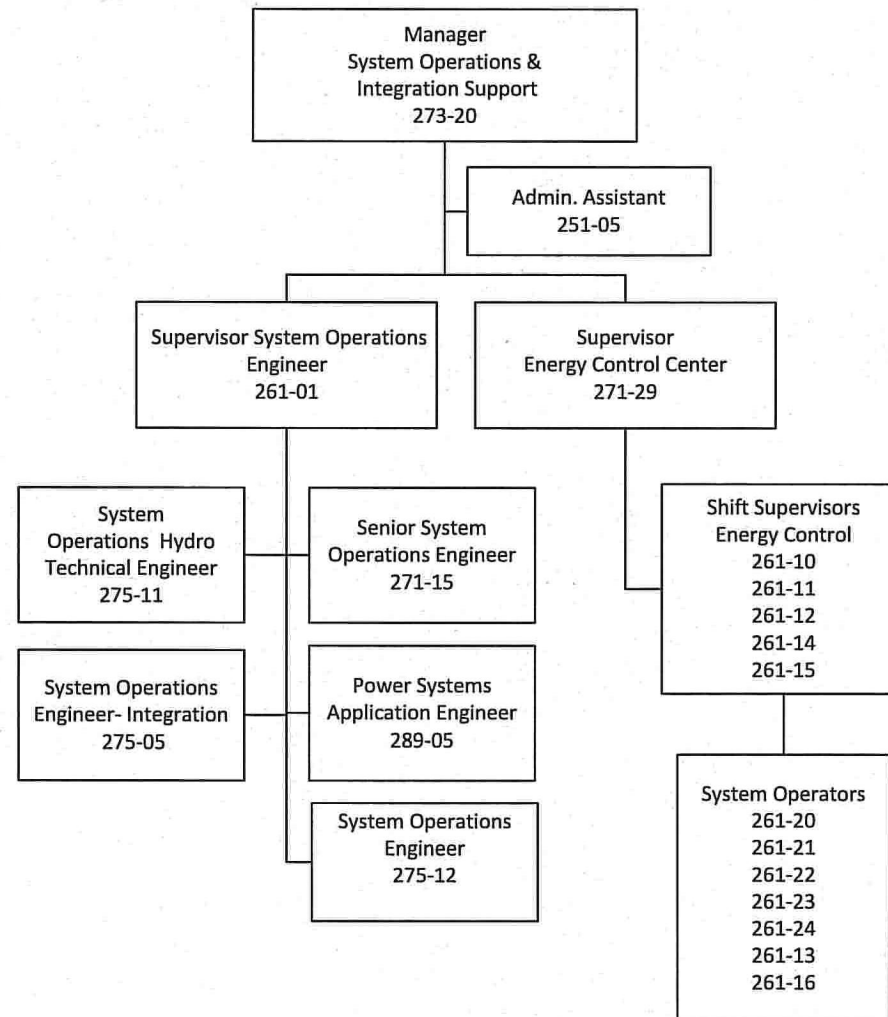
Protection, Control & Communications Engineering



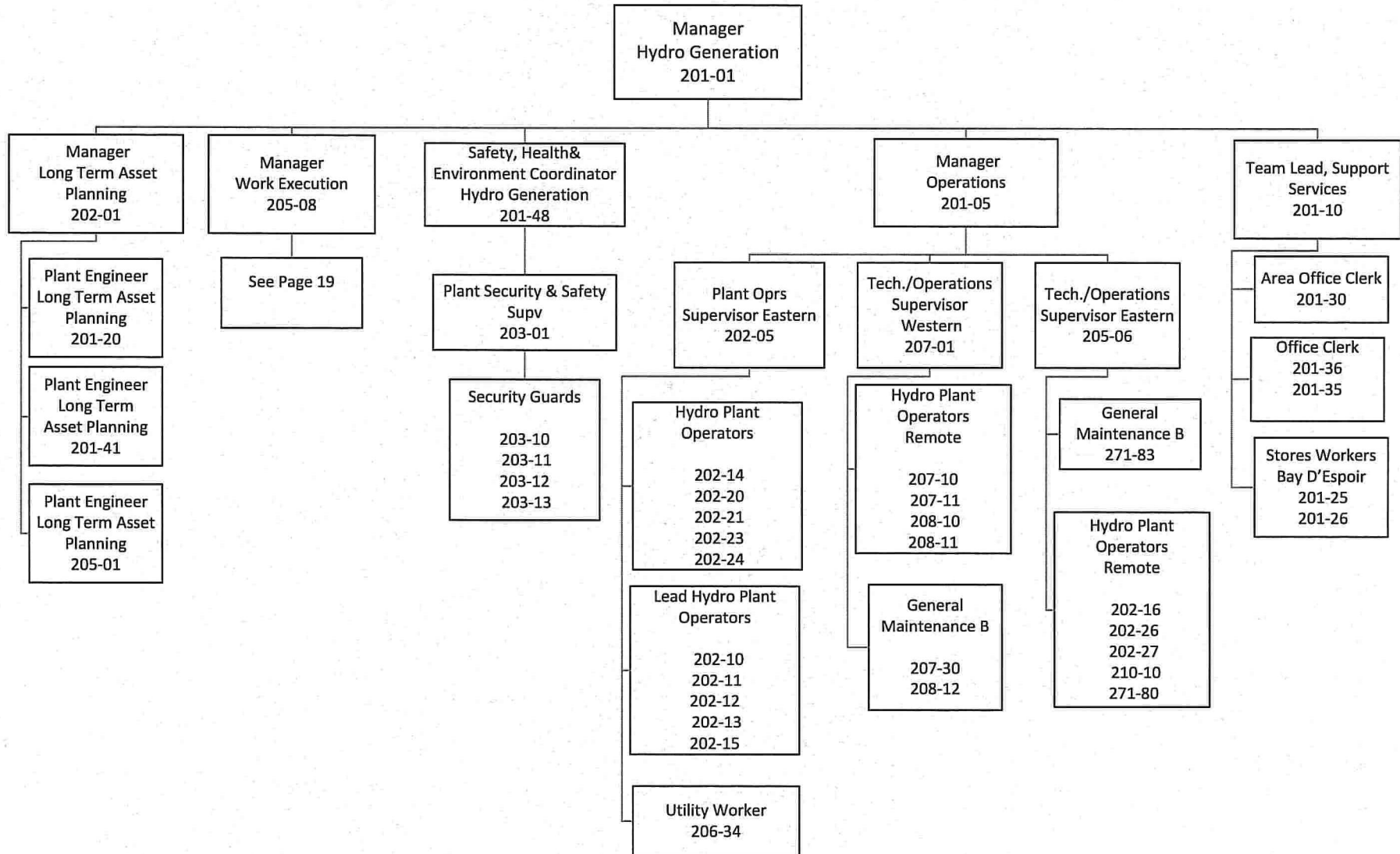
# System Planning



### System Operations and Integration Support



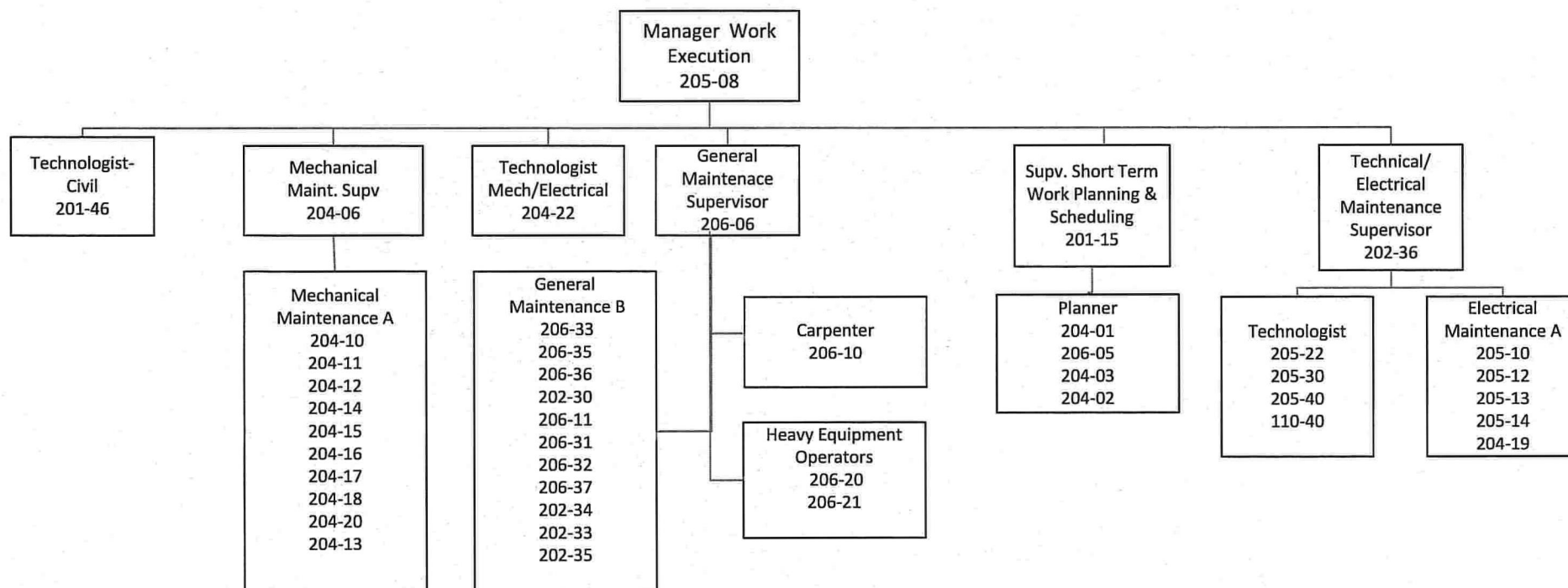
**Regulated Operations  
1 of 2 - Hydro Operations**



Regulated Operations  
Part 2 of 2 – Hydro Operations

PUB-NLH-138, Attachment 1 (Revision 4)

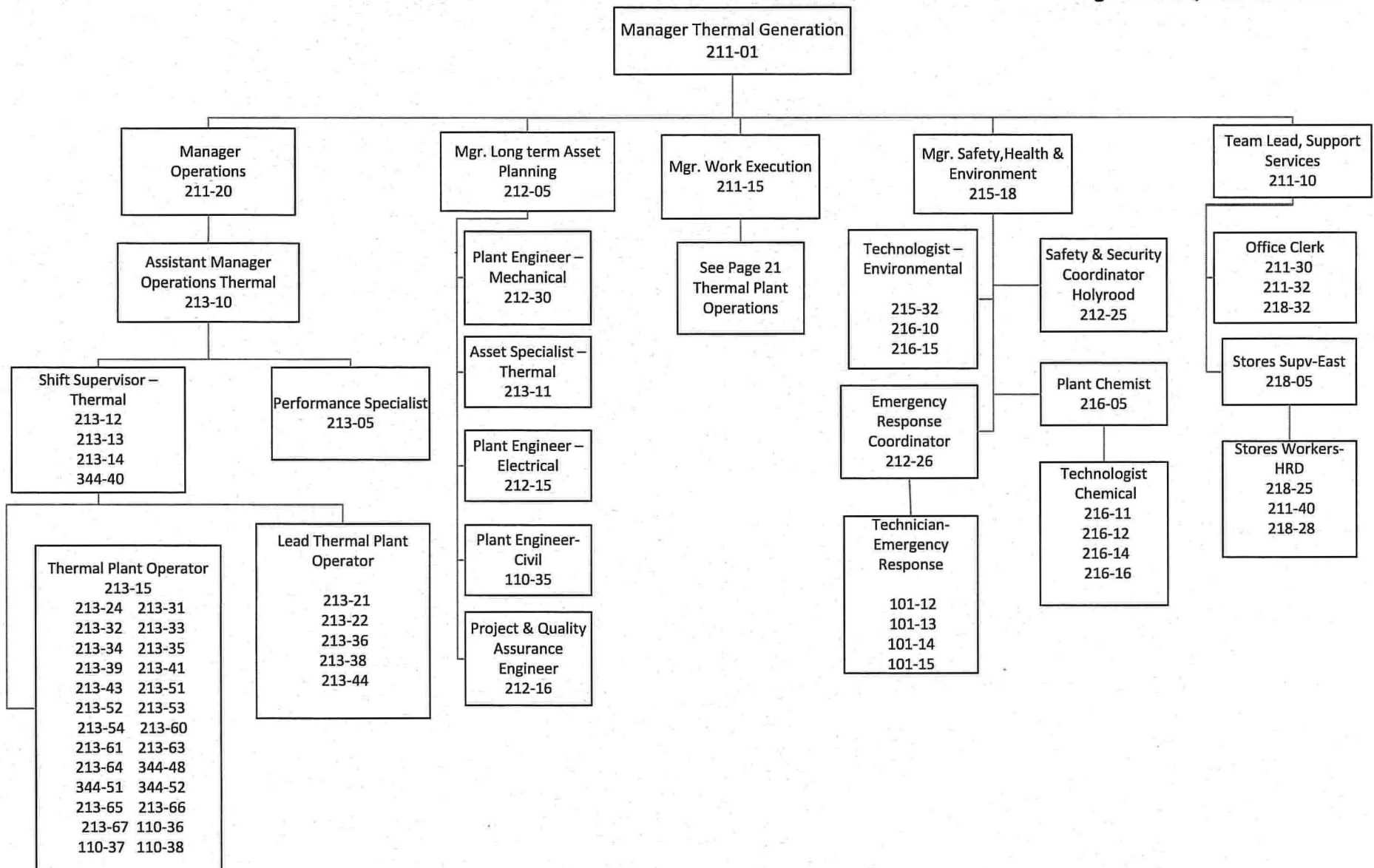
Page 19 of 28, NLH 2013 GRA



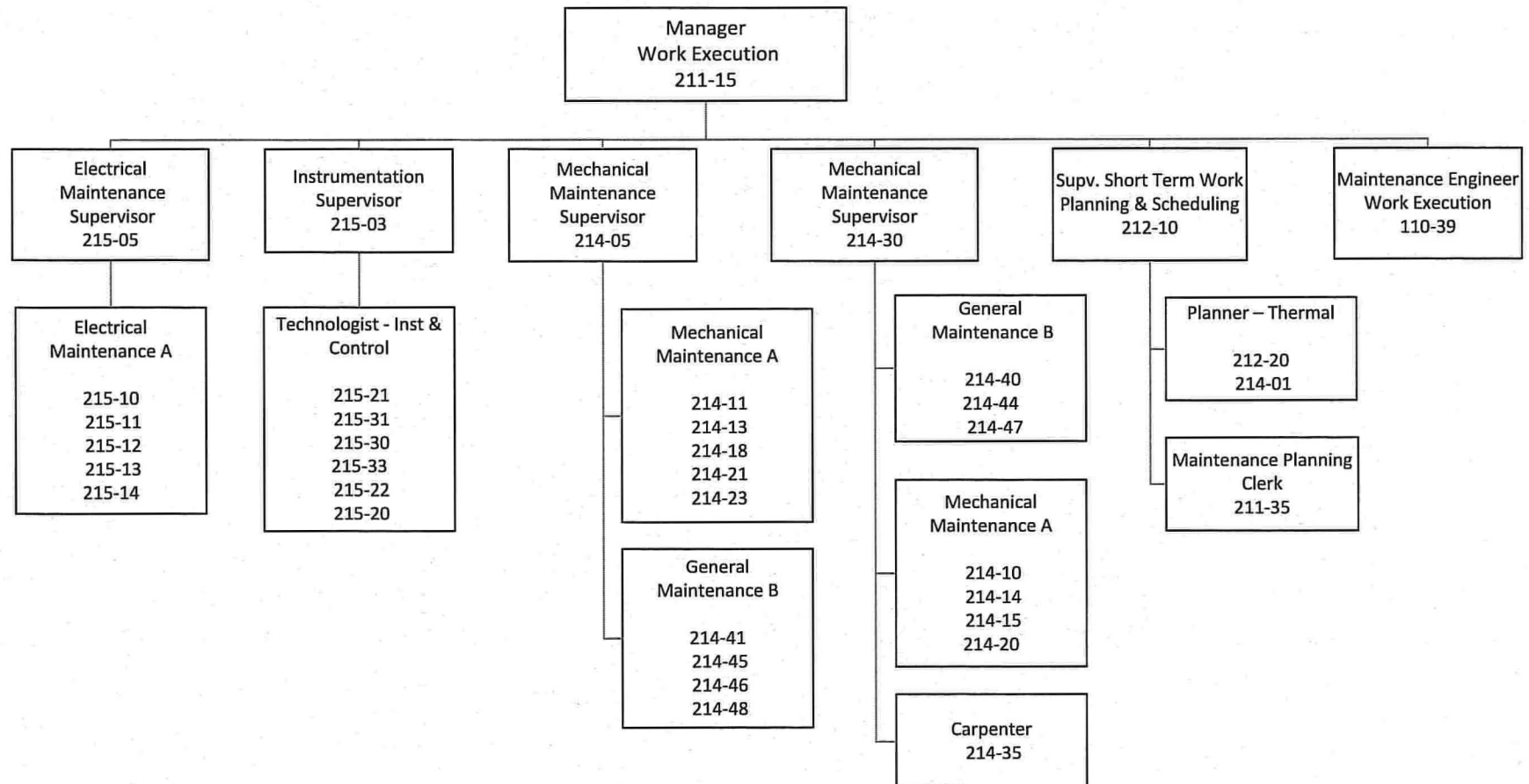


**Generation Operations  
1 of 2 - Thermal Plant Operations**

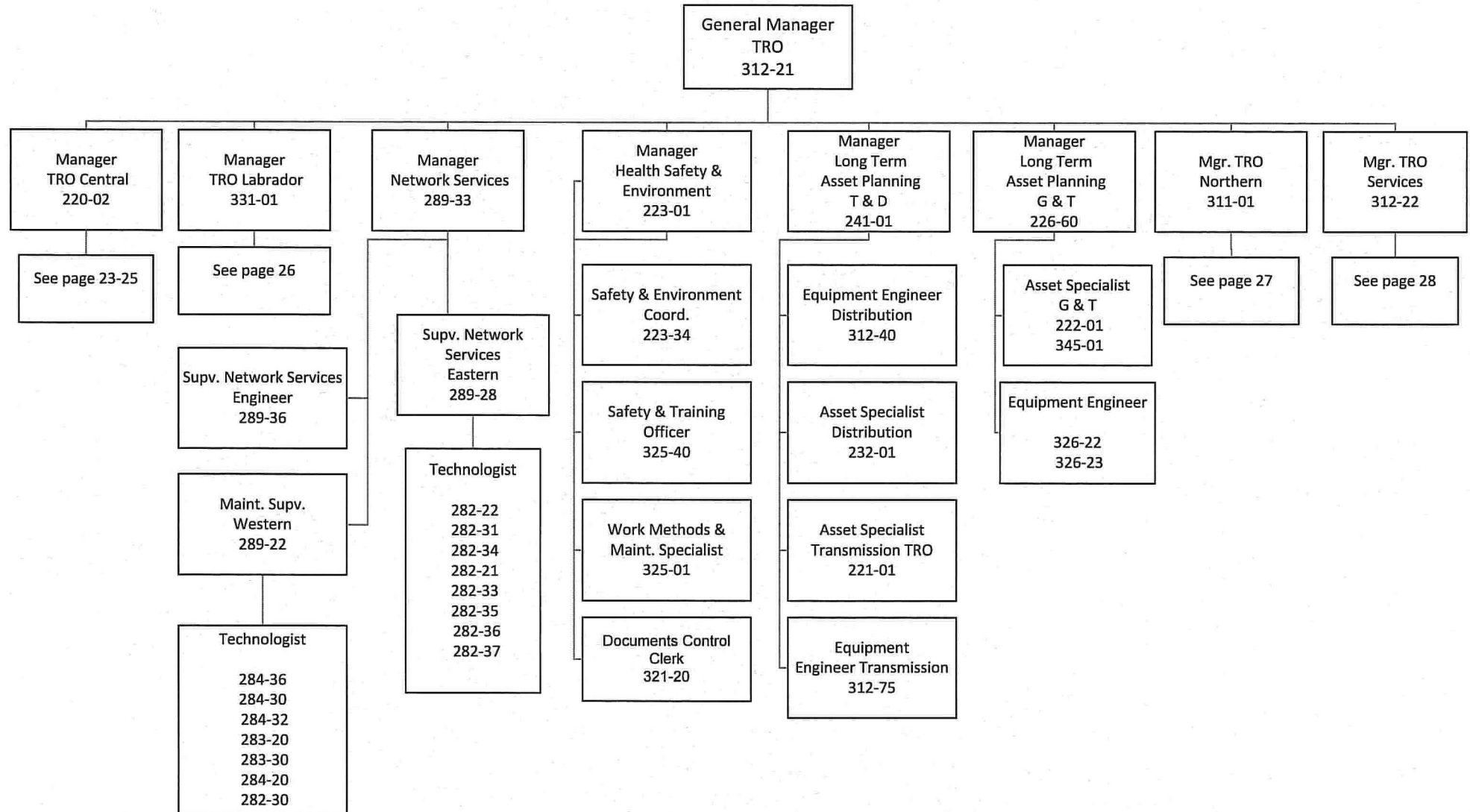
**PUB-NLH-138, Attachment 1 (Revision 4)  
Page 20 of 28, NLH 2013 GRA**



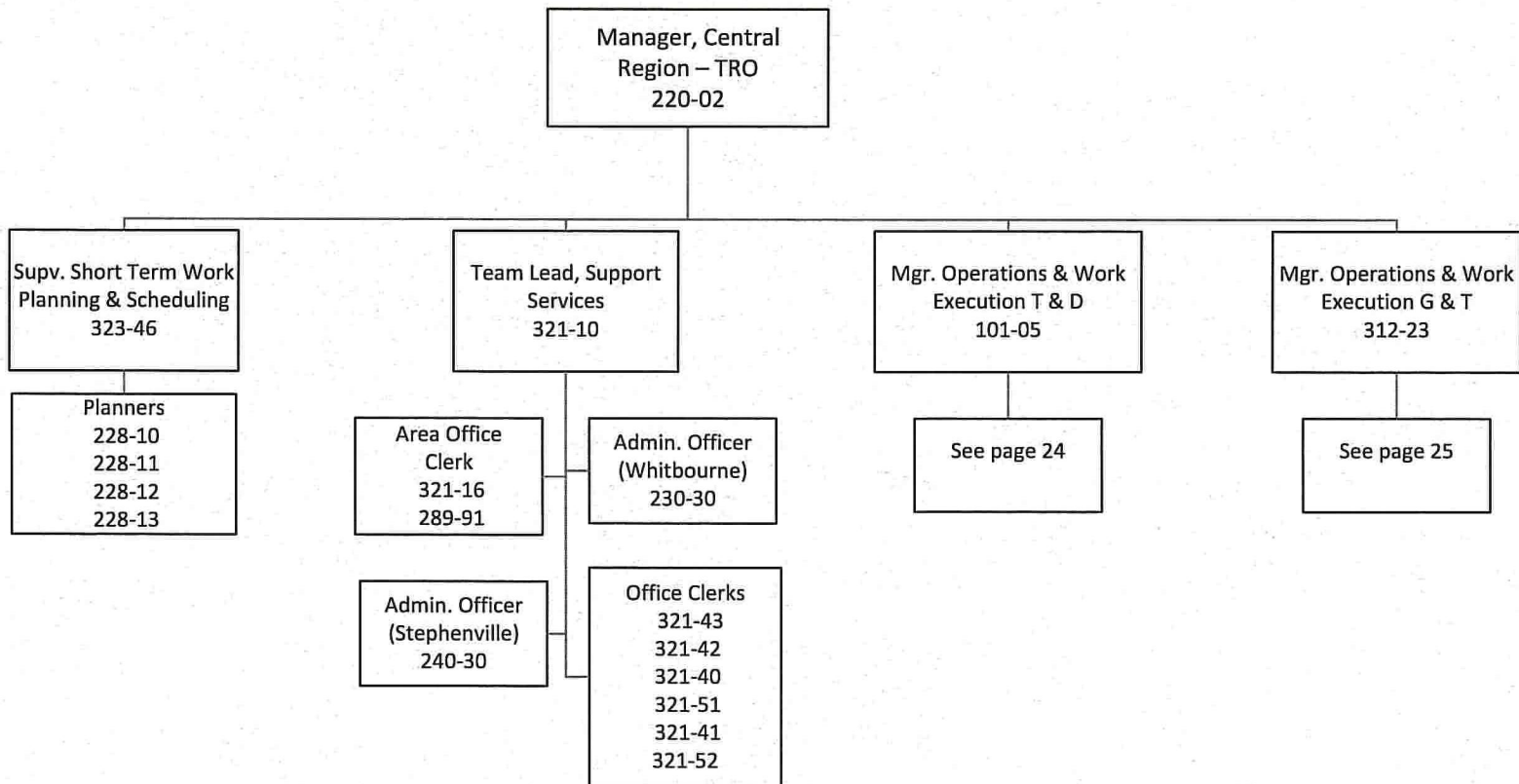
**Generation Operations**  
**2 of 2 - Thermal Plant Operations**



Transmission and Rural Operations

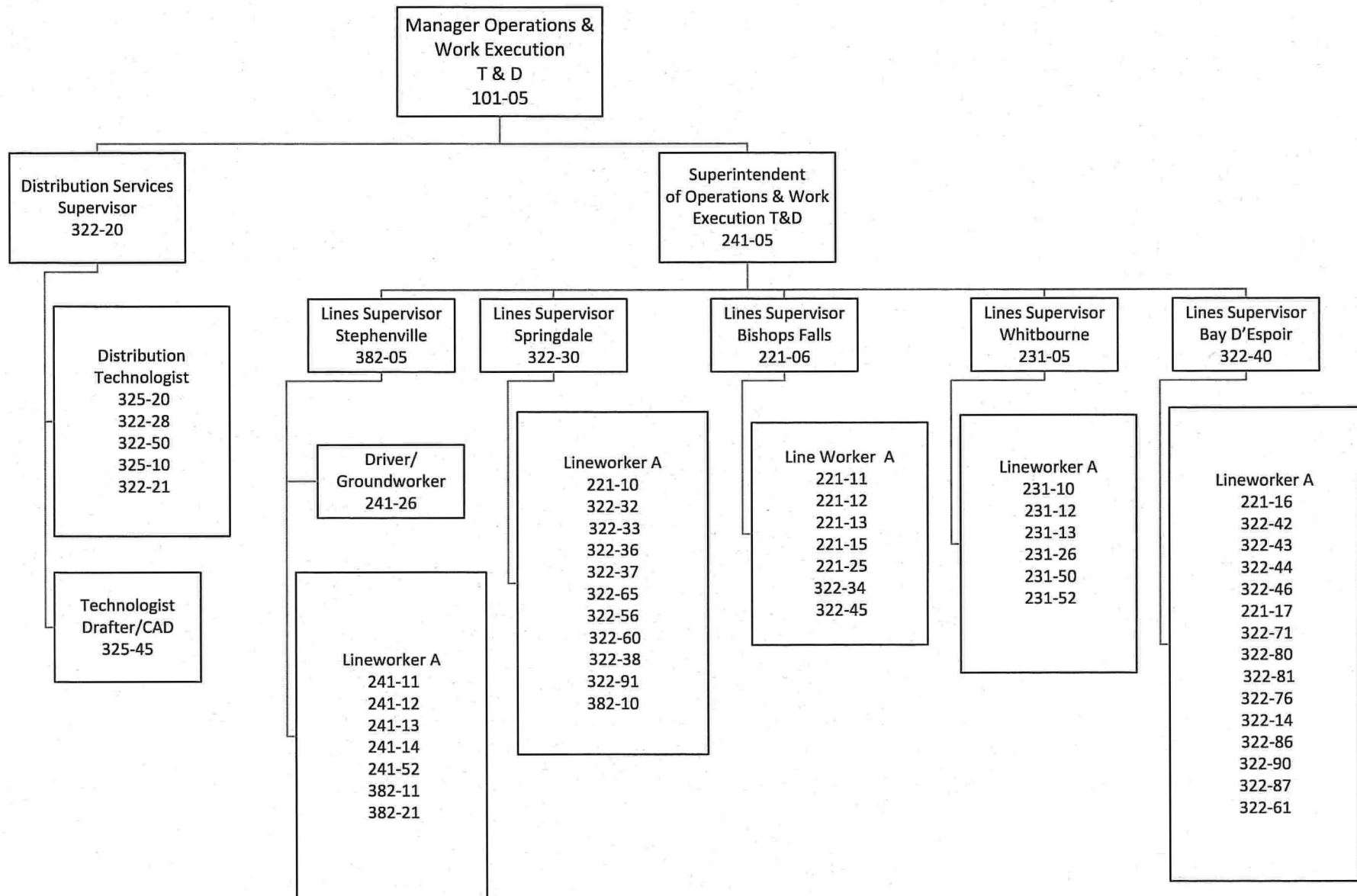


# Transmission and Rural Operations Central Region



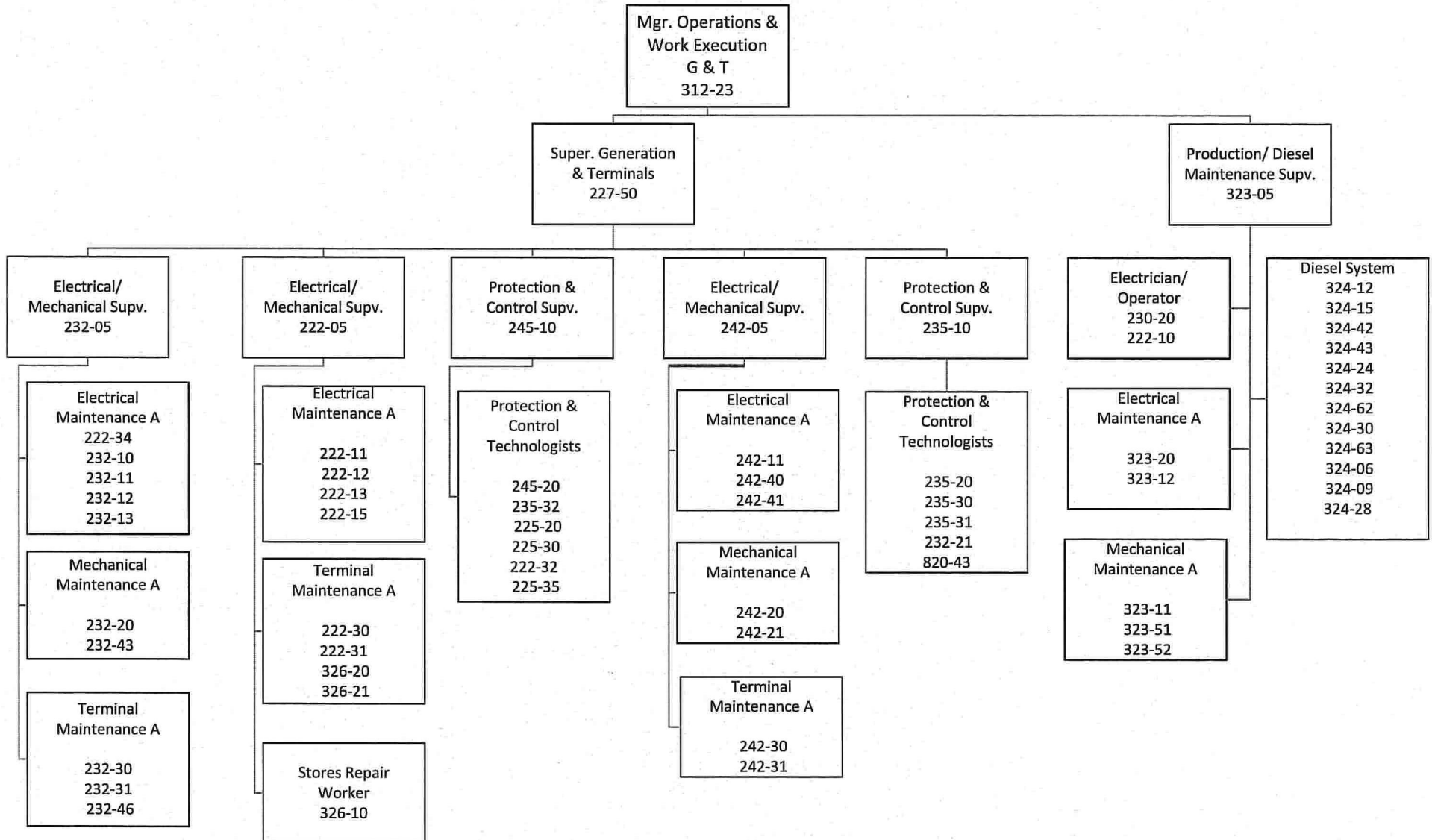
## Transmission and Rural Operations

## Central Region



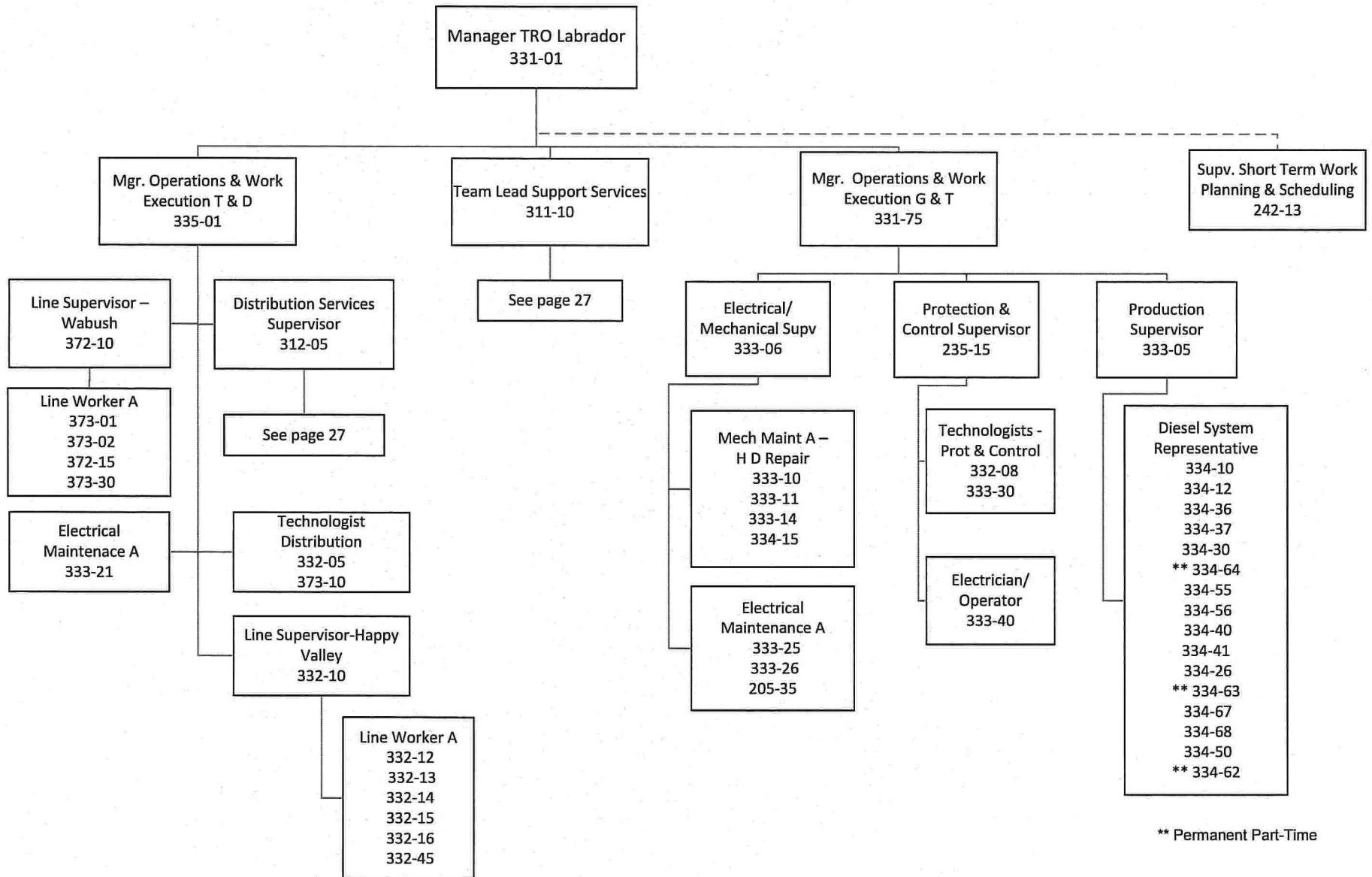
**Transmission and Rural Operations  
Central Region**

**PUB-NLH-138, Attachment 1 (Revision 4)  
Page 25 of 28, NLH 2013 GRA**



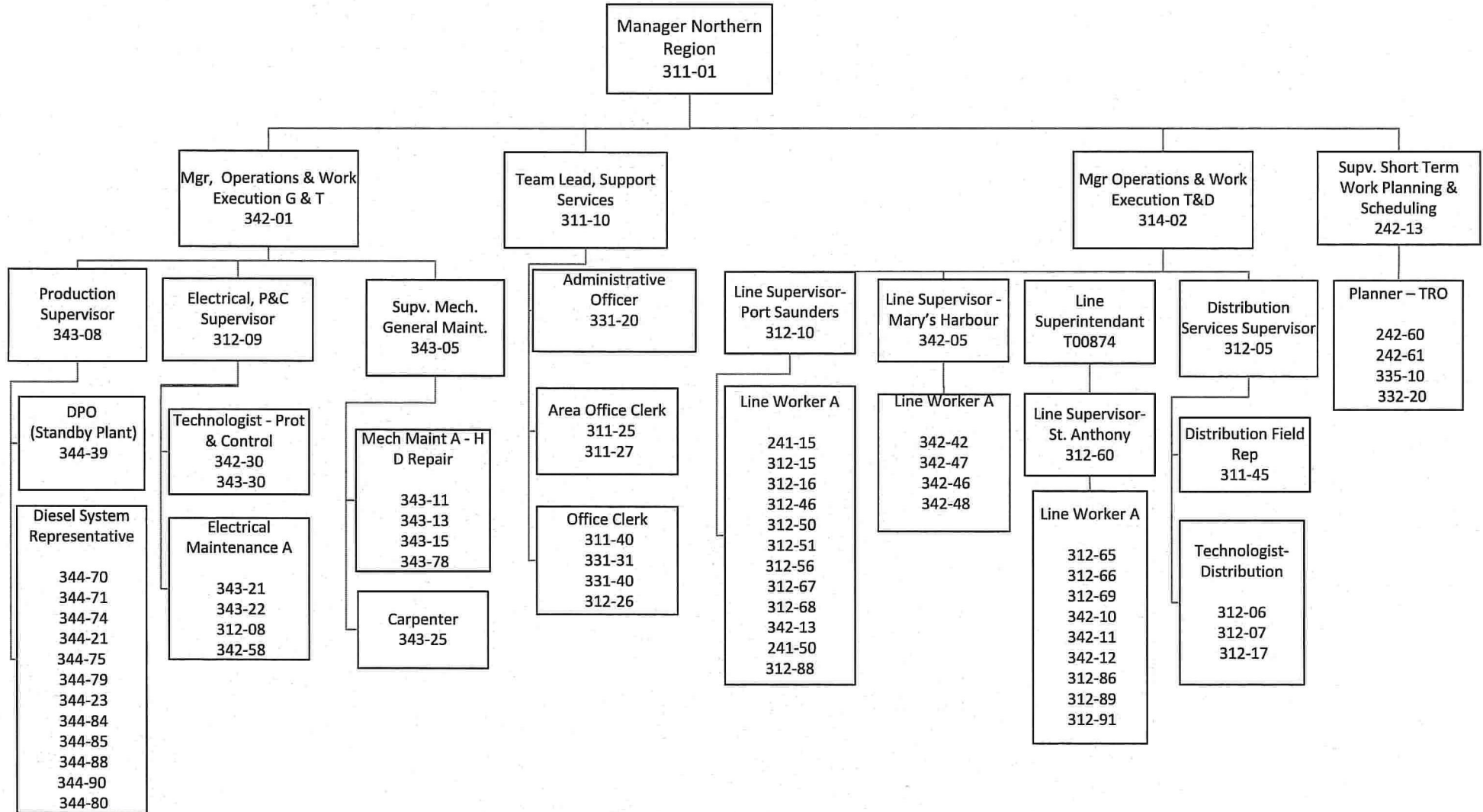


# Transmission and Rural Operations Labrador Region



**Transmission and Rural Operations  
Northern Region**

**PUB-NLH-138, Attachment 1 (Revision 4)  
Page 27 of 28, NLH 2013 GRA**



Support Services

