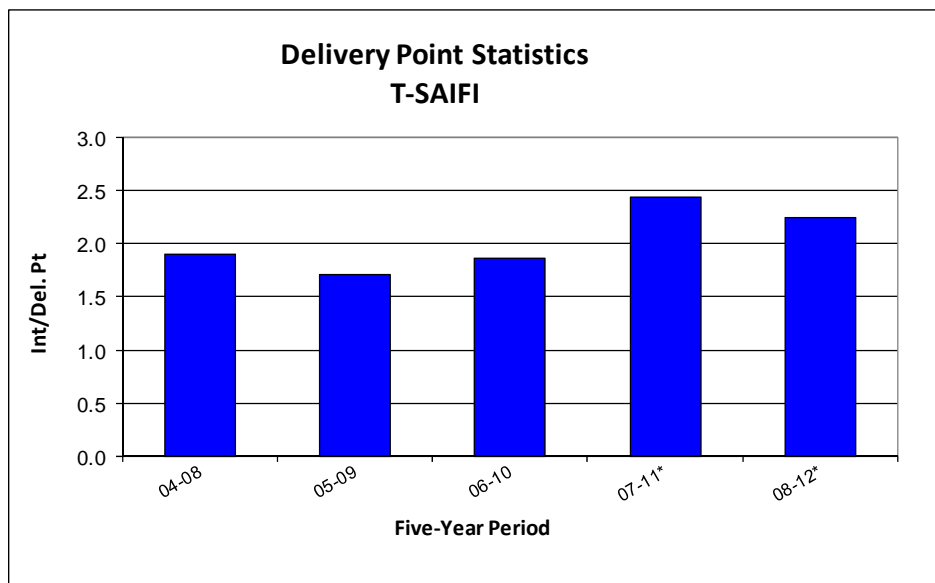


1 Q. (Regulated Activities Evidence page 2.11, lines 4 to 10)

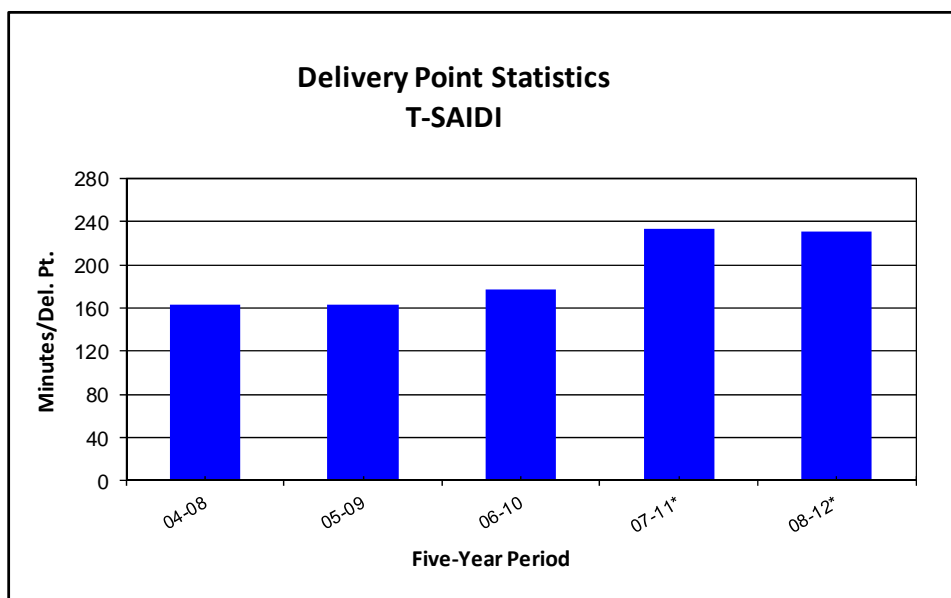
2 Is it common in the industry to rank transmission system performance on the basis
3 of one year when a single transmission outage has such a significant impact on
4 results? Would it be more informative to use a 5-year rolling average similar to
5 what Hydro has used for historical comparison purposes? Please provide a
6 comparison of transmission reliability performance in recent years on this basis.
7
8

9 A. In the description and chart found in Regulated Activities Evidence, Section 2.3.3 –
10 Reliability, Hydro has presented its 2012 reliability performance in several key areas
11 compared against the latest five-year averages. Please refer to Exhibit 2, Hydro’s
12 Annual Report on Key Performance Indicators, for further illustrations of single-year
13 transmission reliability performance compared against the latest five-year average.
14 It is not known how others in the industry would present their data for internal use,
15 however both single-year and five-year performance data is available through CEA
16 member reporting.
17

18 Hydro also uses the five-year rolling average method of reporting for transmission
19 performance. Please refer to the following charts for Hydro’s five-year rolling
20 averages of transmission SAIFI and SAIDI (forced and planned combined).



* In 2011, Transmission performance was negatively affected by a number of severe weather related events which caused numerous and lengthy outages, primarily in the Northern and Central regions.



* In 2011, Transmission performance was negatively affected by a number of severe weather related events which caused numerous and lengthy outages, primarily in the Northern and Central regions.