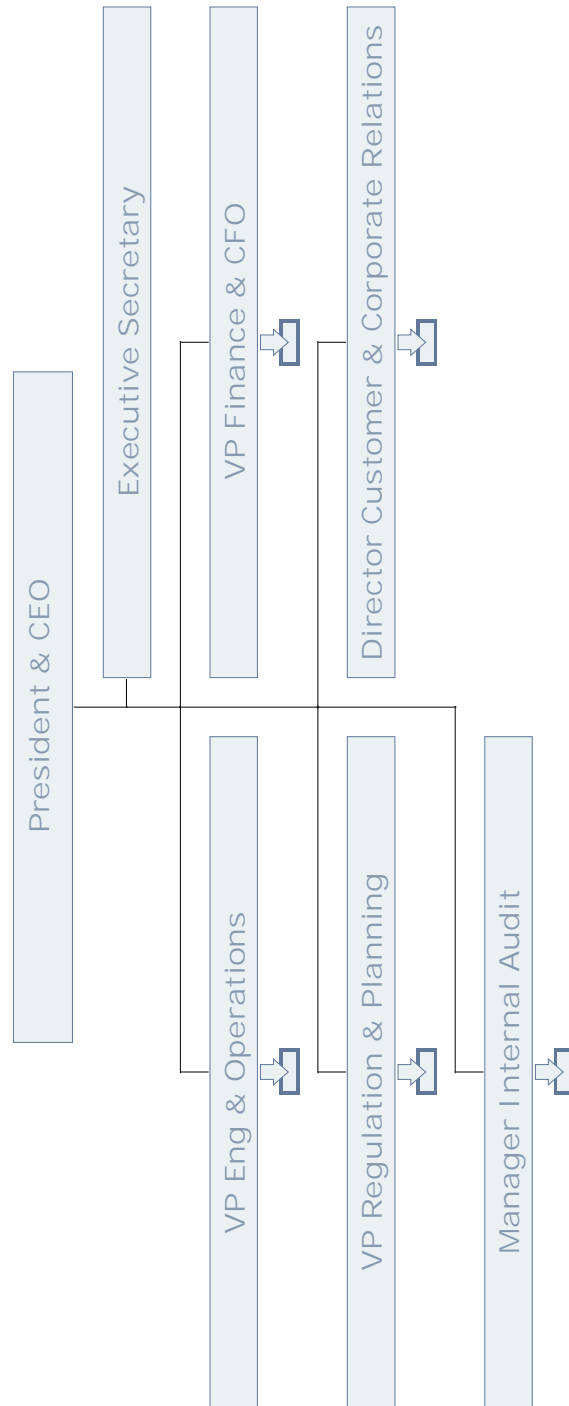


- 1 **Q. Please provide the most recent organization chart for Newfoundland Power.**  
2  
3 A. Attachment A contains a copy of Newfoundland Power’s organization chart as of  
4 October 31<sup>st</sup>, 2015.

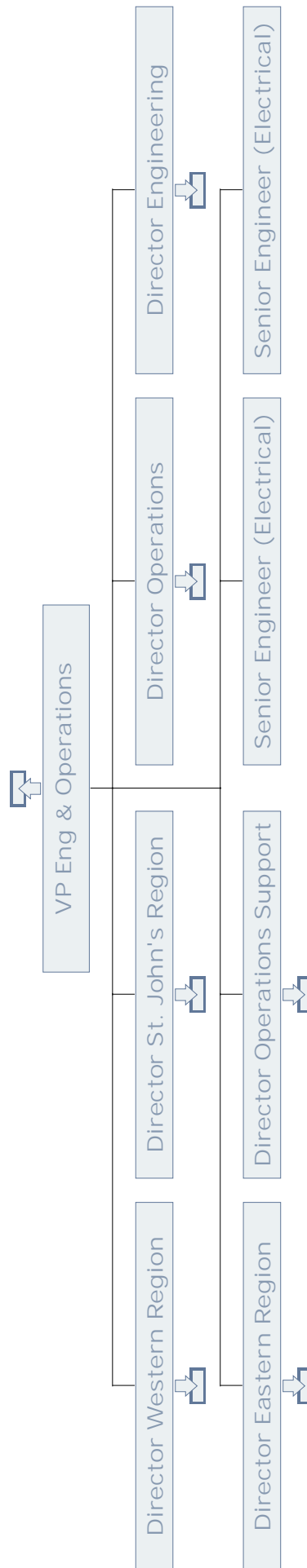
**Newfoundland Power's Organization Chart as of  
October 31<sup>st</sup>, 2015**

# Newfoundland and Power Org Chart

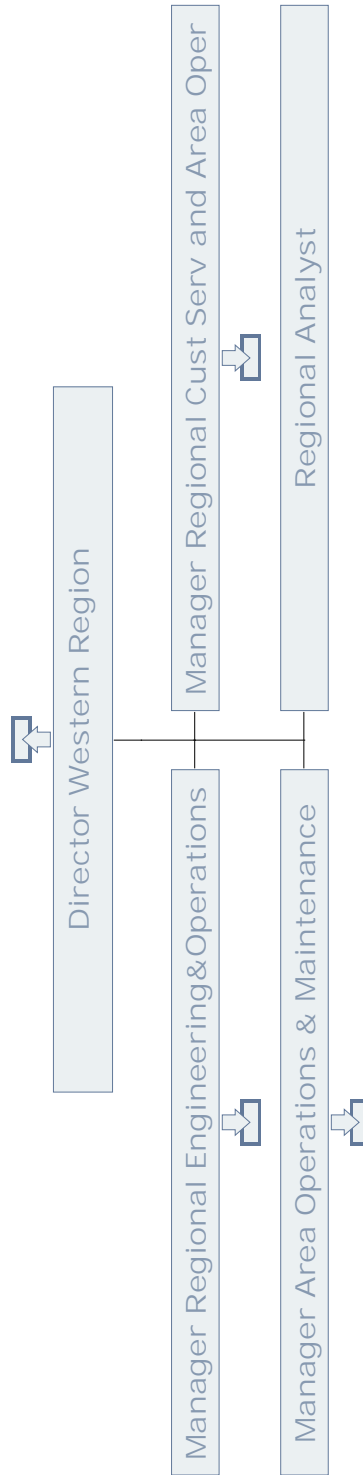
# EXECUTIVE



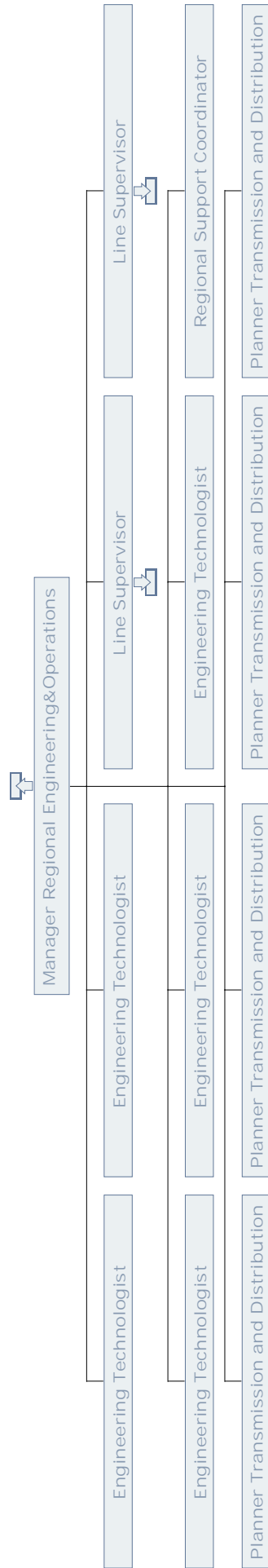
# ENGINEERING & OPERATIONS



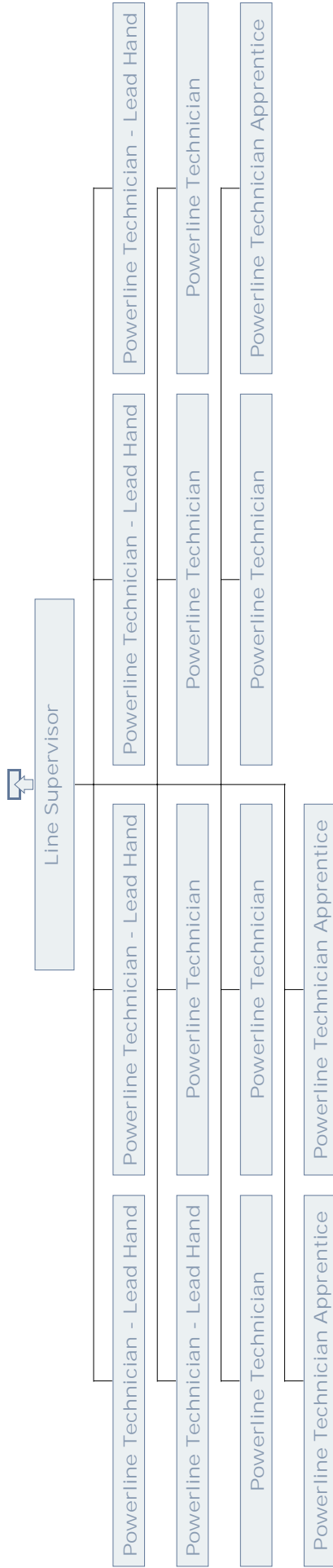
# ENGINEERING & OPERATIONS WESTERN REGION



ENGINEERING & OPERATIONS  
 REGIONAL ENGINEERING & OPERATIONS  
 WESTERN GRAND FALLS

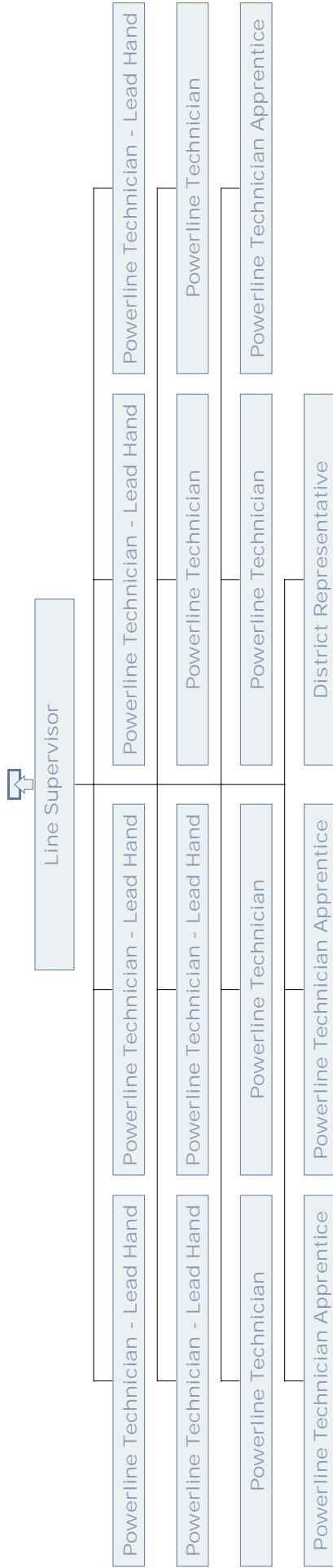


ENGINEERING & OPERATIONS  
 OPERATIONS WESTERN GANDER

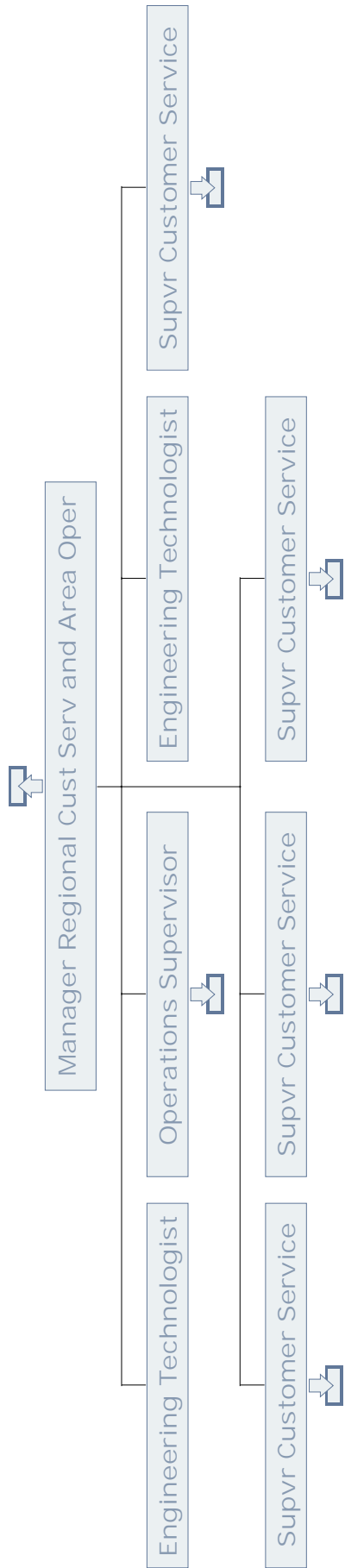




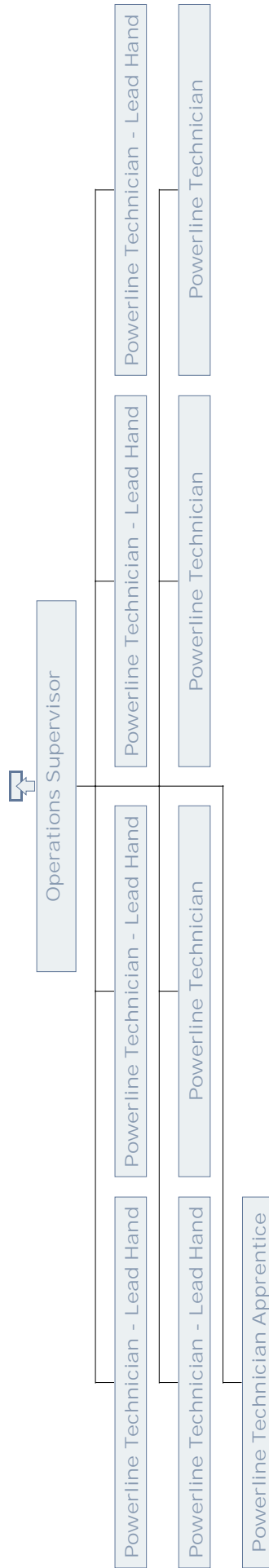
ENGINEERING & OPERATIONS  
OPERATIONS WESTERN GRAND FALLS



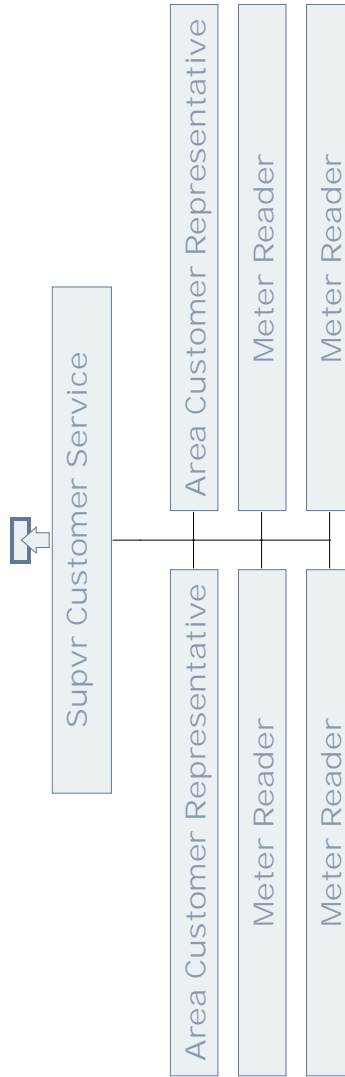
CUSTOMER & CORPORATE RELATIONS  
CUSTOMER SERVICE & AREA OPERATIONS  
WESTERN REGION



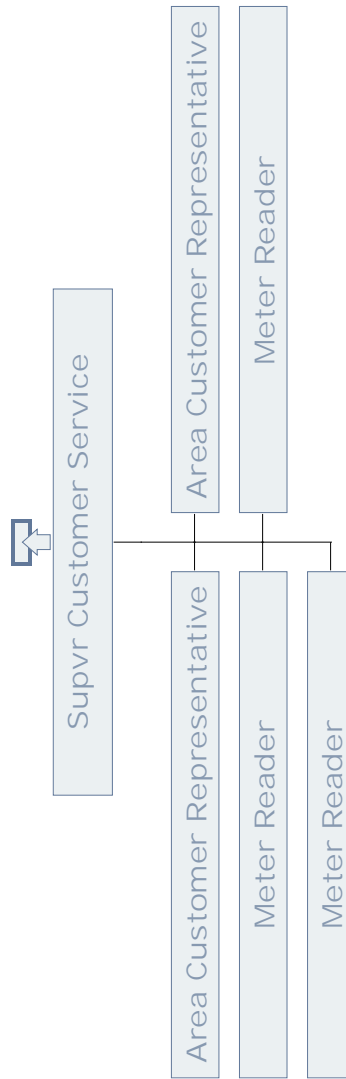
ENGINEERING & OPERATIONS  
OPERATIONS  
WESTERN CORNER BROOK



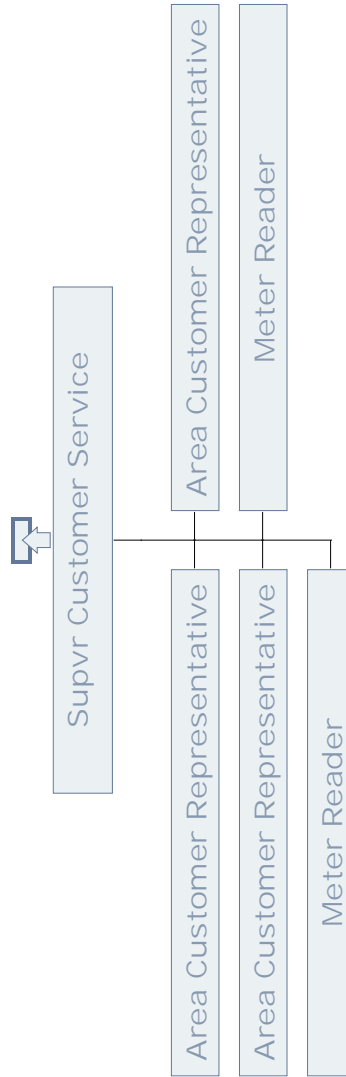
CUSTOMER & CORPORATE RELATIONS  
CUSTOMER SERVICE  
WESTERN STEPHENVILLE



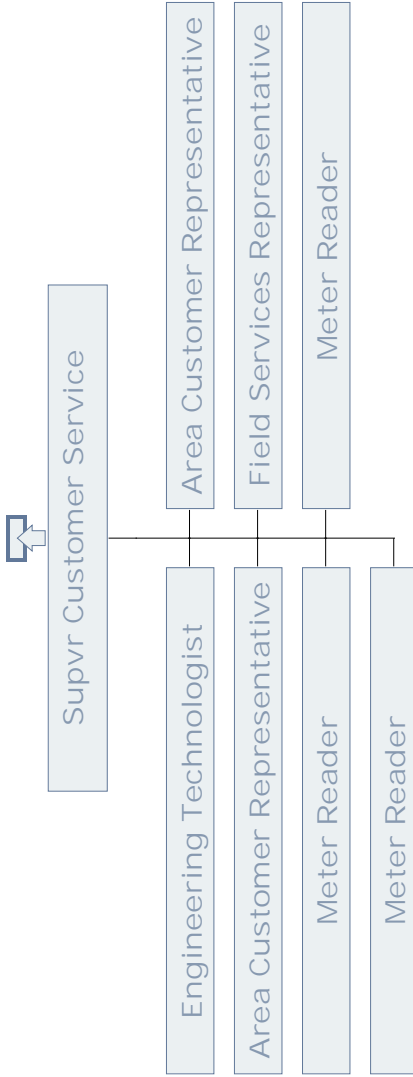
CUSTOMER & CORPORATE RELATIONS  
CUSTOMER SERVICE  
WESTERN GANDER



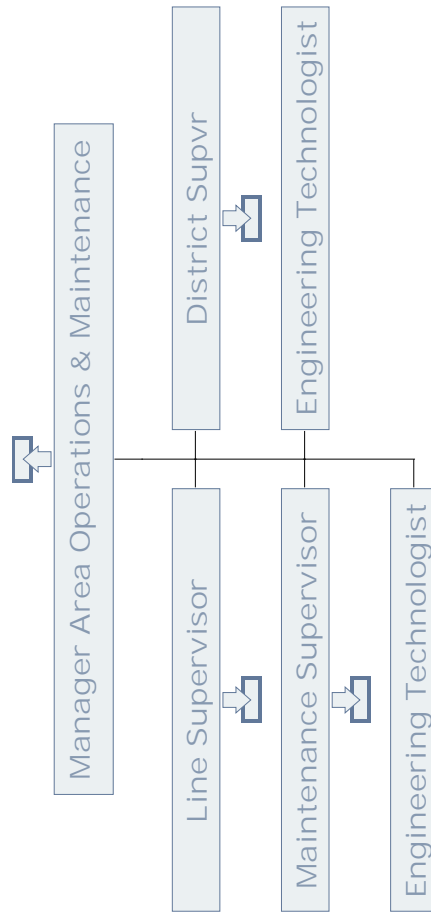
CUSTOMER & CORPORATE RELATIONS  
CUSTOMER SERVICE  
WESTERN CORNER BROOK



CUSTOMER & CORPORATE RELATIONS  
CUSTOMER SERVICE  
WESTERN GRAND FALLS

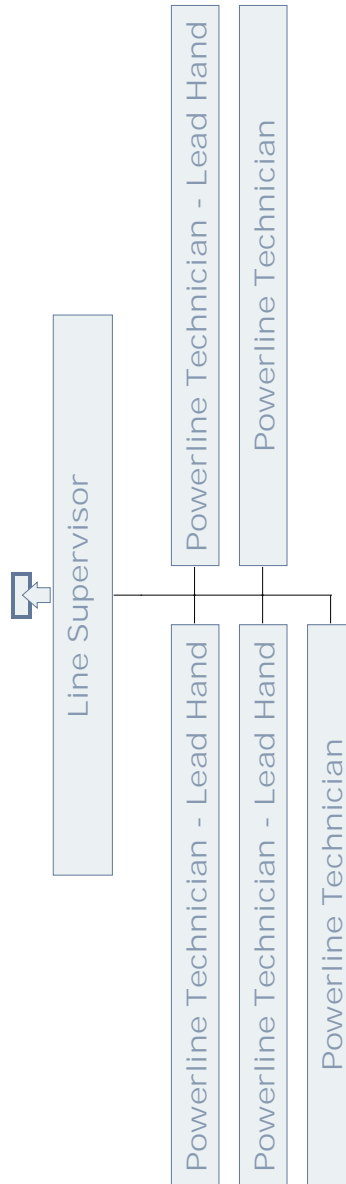


ENGINEERING & OPERATIONS  
OPERATIONS & MAINTENANCE  
WESTERN STEPHENVILLE

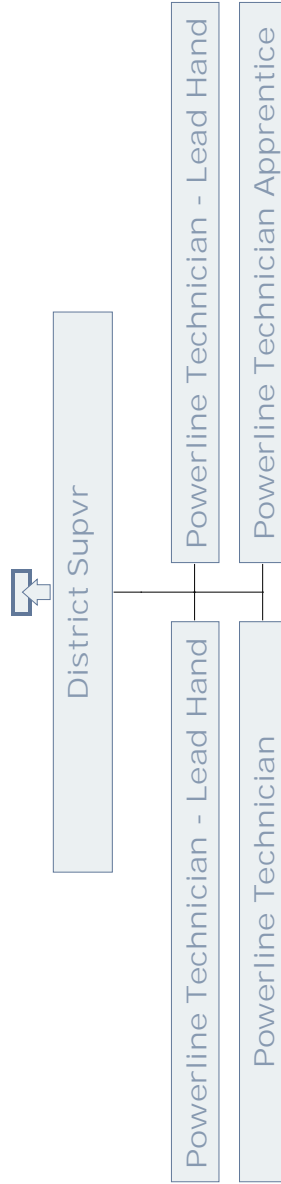




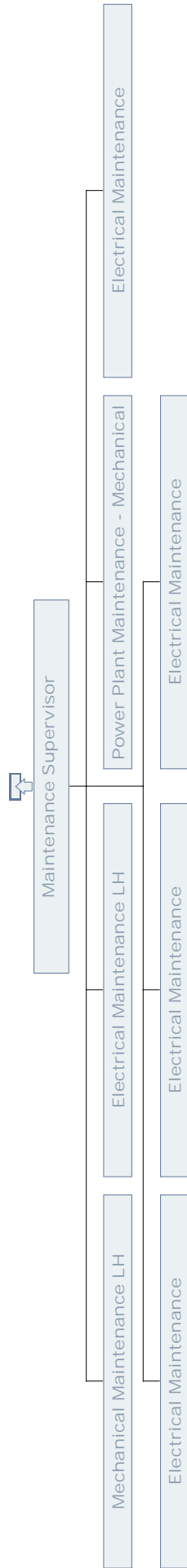
# ENGINEERING & OPERATIONS OPERATIONS WESTERN STEPHENVILLE



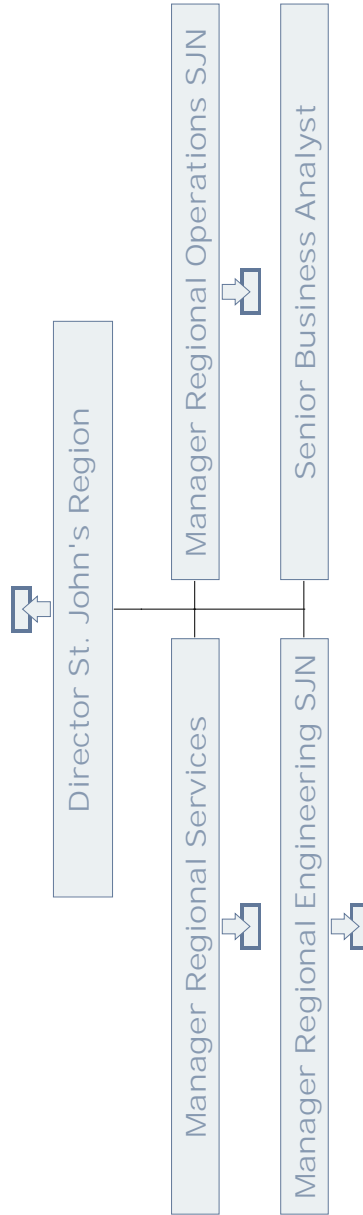
# ENGINEERING & OPERATIONS OPERATIONS, WESTERN PORT AUX BASQUES



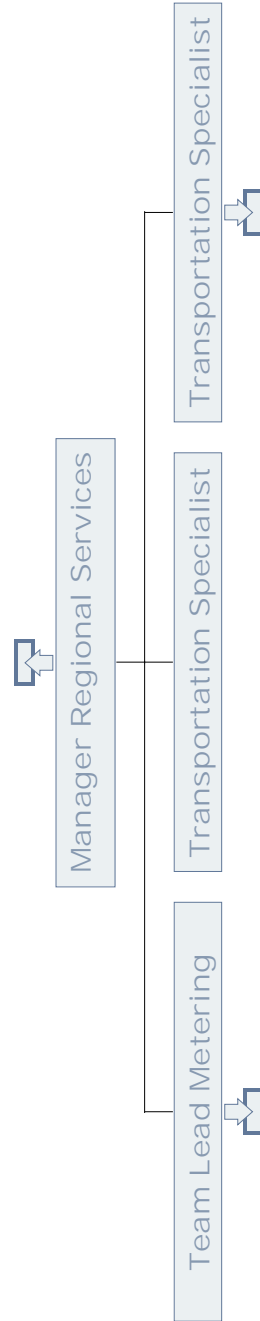
ENGINEERING & OPERATIONS  
WESTERN STEPHENVILLE



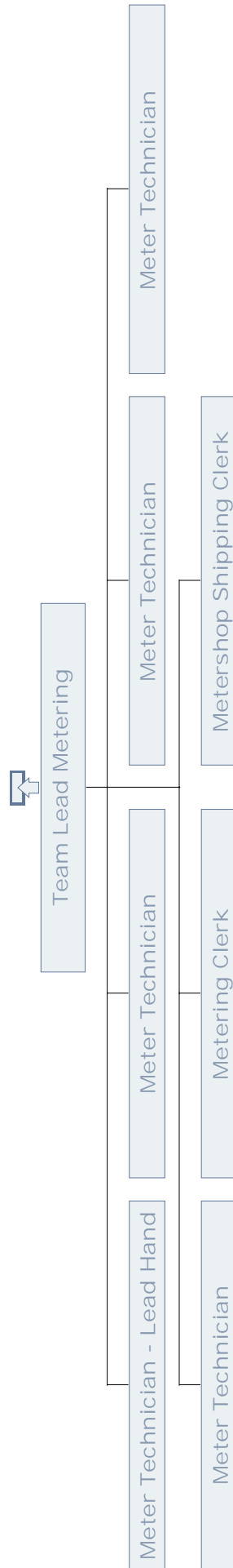
# ENGINEERING & OPERATIONS ST. JOHN'S REGION



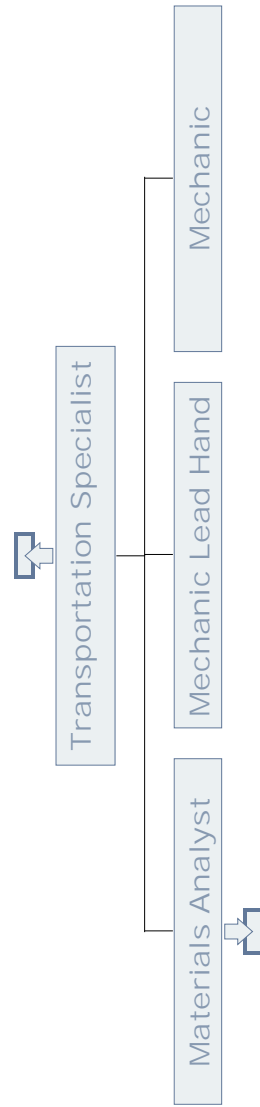
# ENGINEERING & OPERATIONS ST. JOHN'S REGIONAL SERVICES



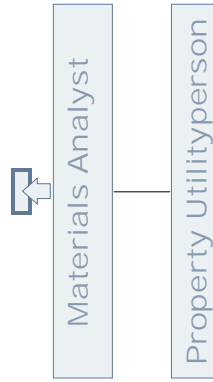
ENGINEERING & OPERATIONS  
ST. JOHN'S REGIONAL SERVICES  
METERING



ENGINEERING & OPERATIONS  
ST. JOHN'S REGIONAL SERVICES  
TRANSPORTATION

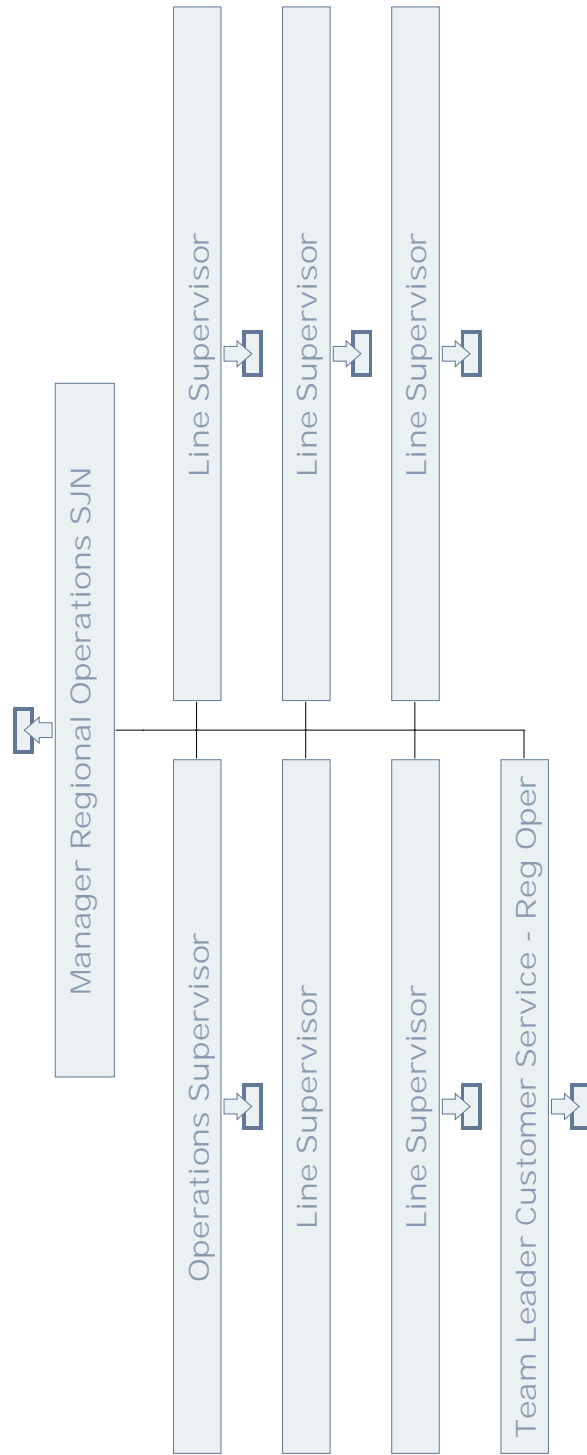


## ENGINEERING & OPERATIONS ST. JOHN'S REGIONAL SERVICES

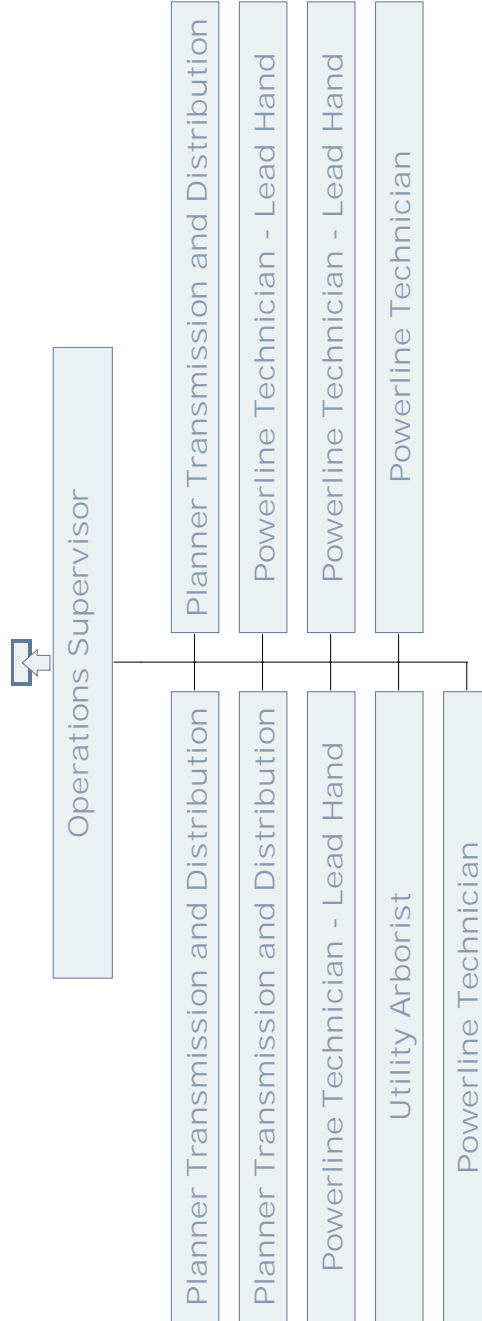




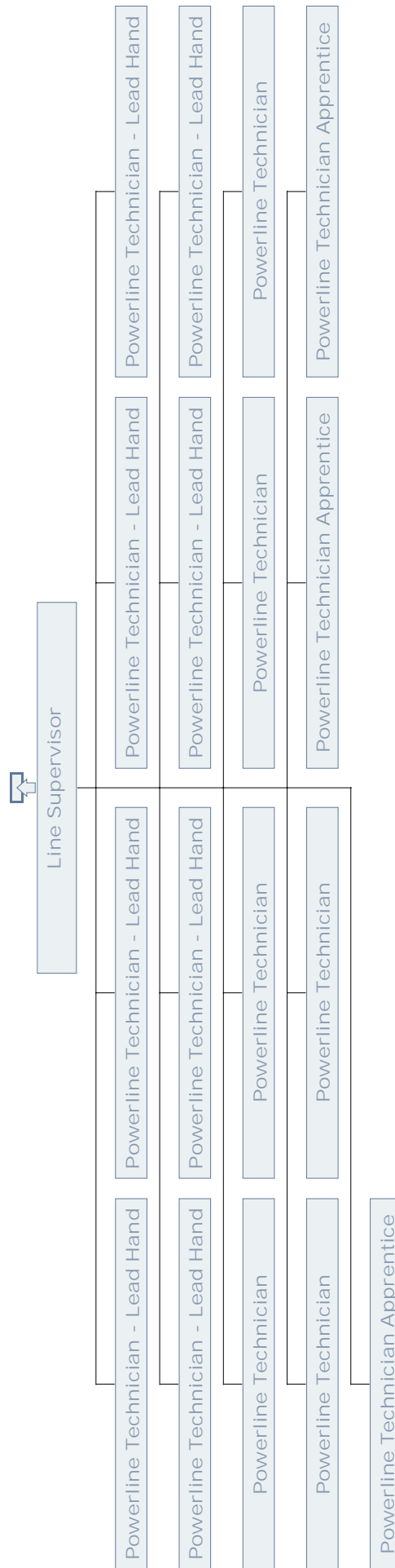
# ENGINEERING & OPERATIONS ST. JOHN'S REGIONAL OPERATIONS



# ENGINEERING & OPERATIONS ST. JOHN'S REGIONAL OPERATIONS



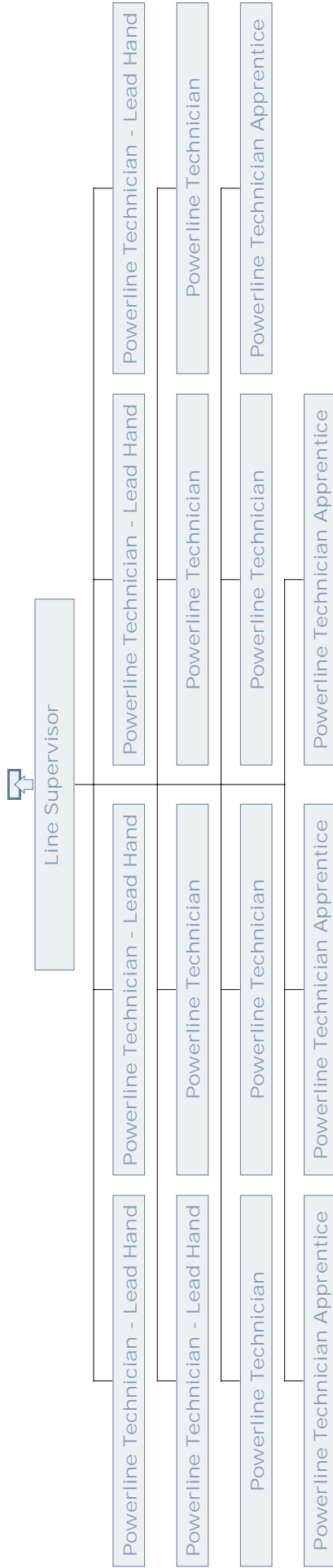
ENGINEERING & OPERATIONS  
ST. JOHN'S REGIONAL OPERATIONS



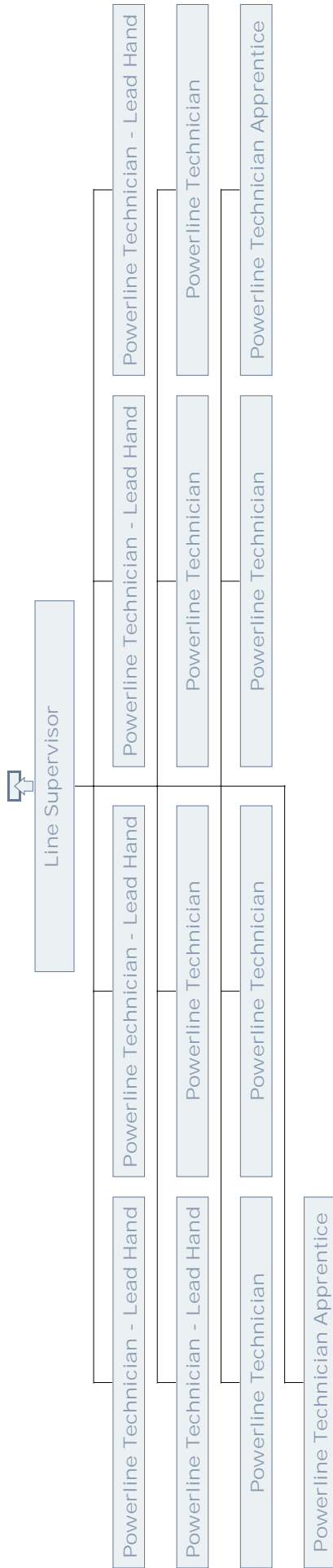
**ENGINEERING & OPERATIONS  
ST. JOHN'S REGIONAL OPERATIONS**



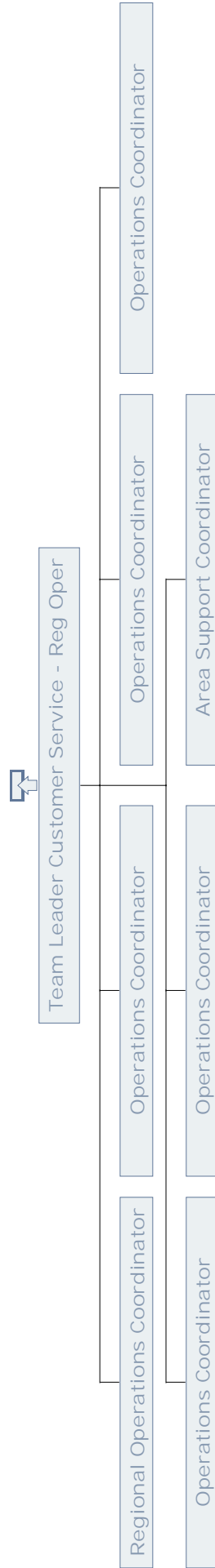
ENGINEERING & OPERATIONS  
ST. JOHN'S REGIONAL OPERATIONS



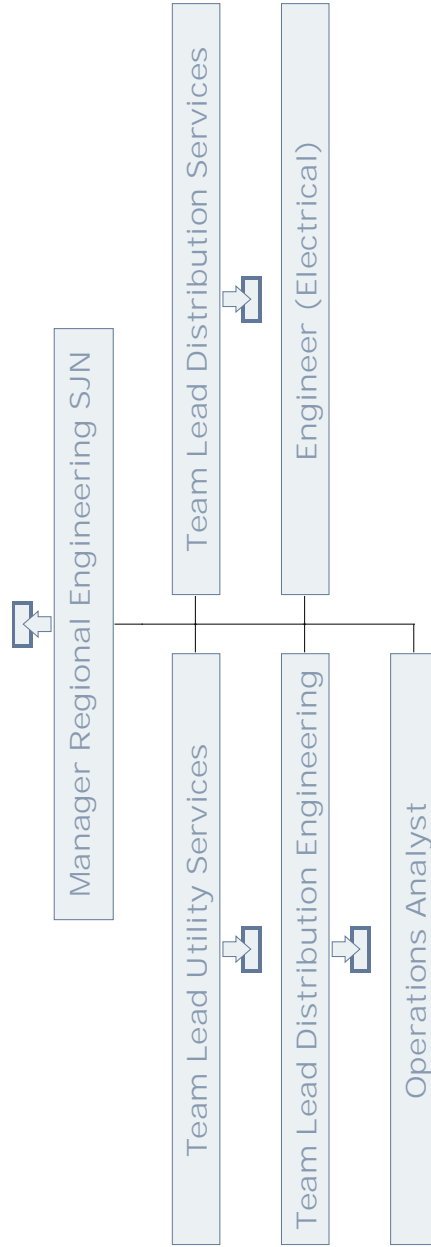
ENGINEERING & OPERATIONS  
ST. JOHN'S REGIONAL OPERATIONS



ENGINEERING & OPERATIONS  
ST. JOHN'S REGIONAL OPERATIONS

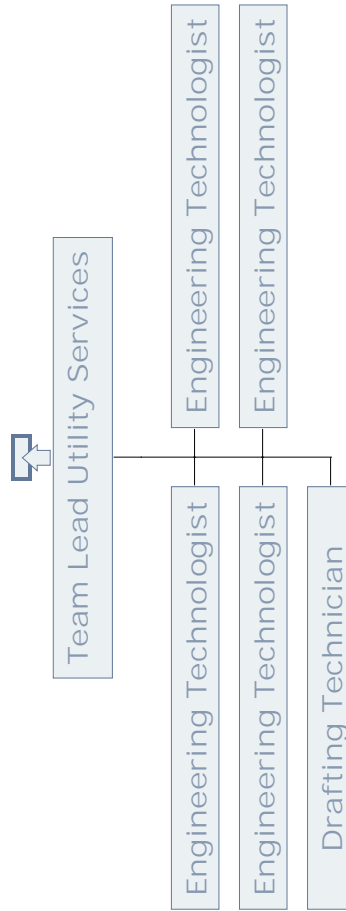


# ENGINEERING & OPERATIONS ST. JOHN'S REGIONAL ENGINEERING

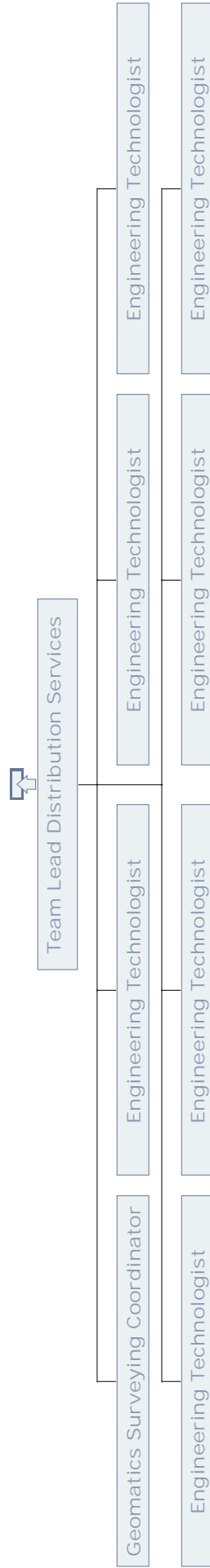




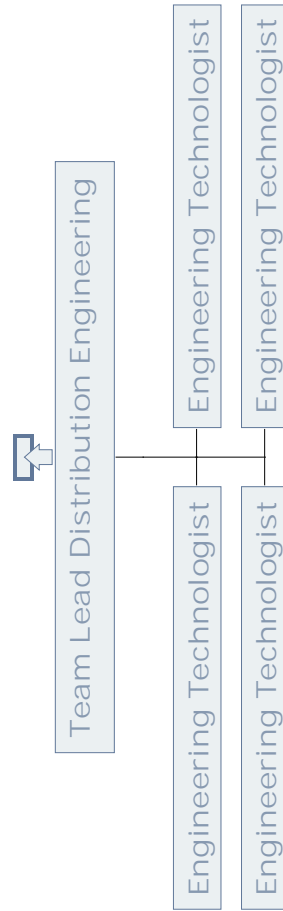
## ENGINEERING & OPERATIONS ST. JOHN'S UTILITY SERVICES



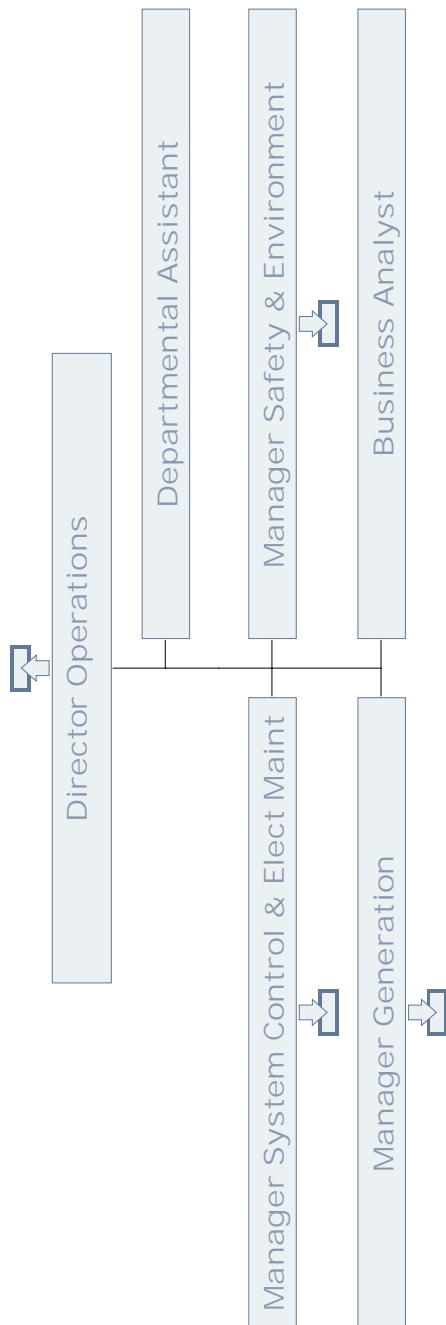
ENGINEERING & OPERATIONS  
ST. JOHN'S DISTRIBUTION SERVICES



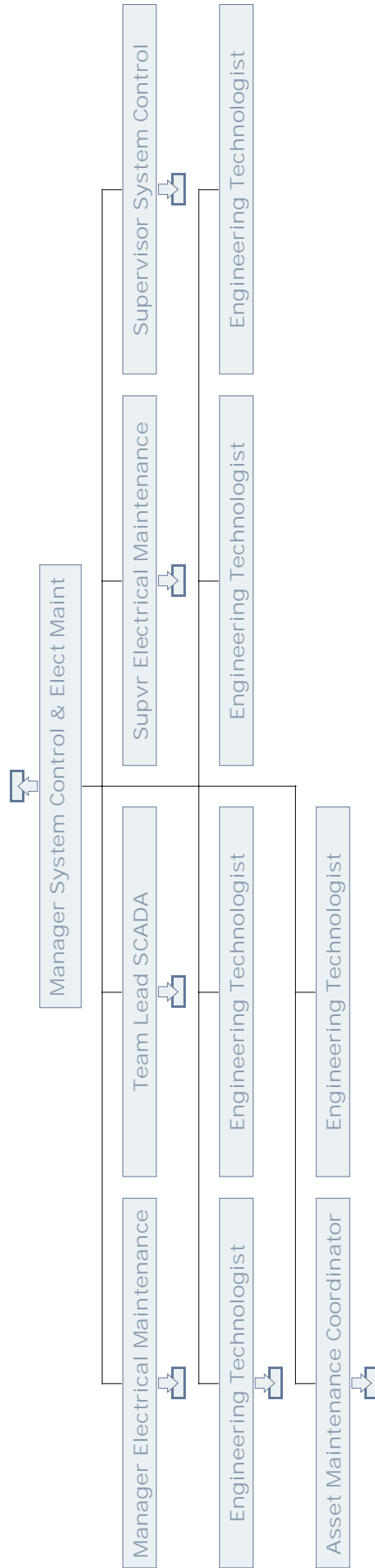
## ENGINEERING & OPERATIONS ST. JOHN'S DISTRIBUTION ENGINEERING



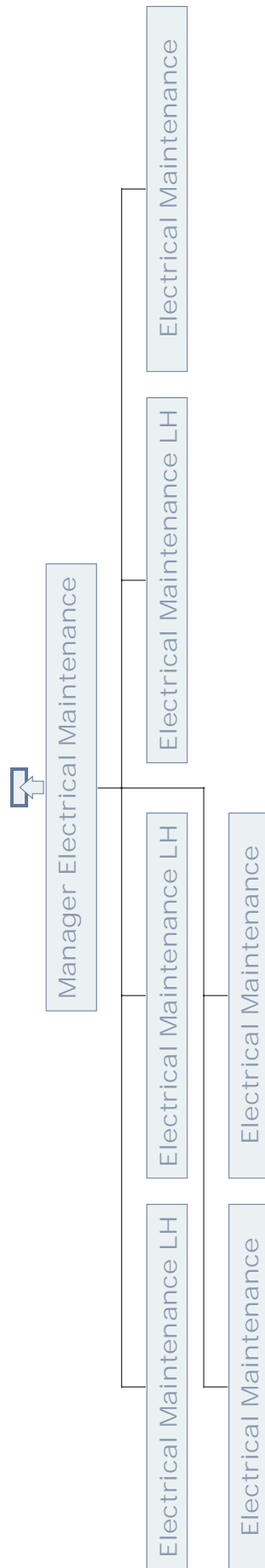
# ENGINEERING & OPERATIONS OPERATIONS



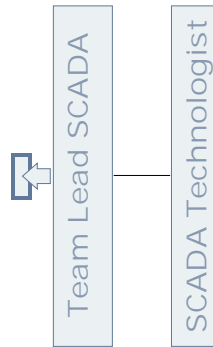
# ENGINEERING & OPERATIONS SYSTEM CONTROL & ELECTRICAL MAINTENANCE



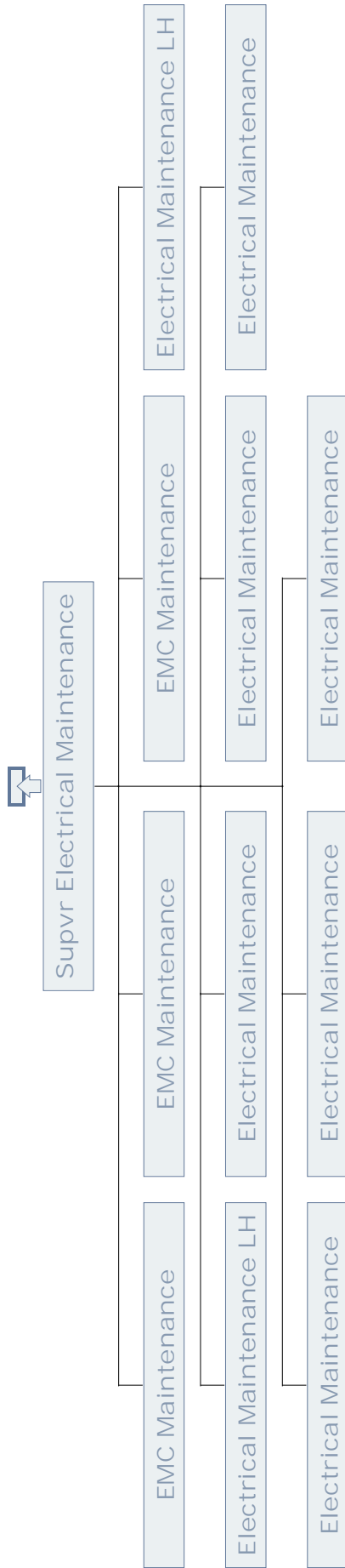
# ENGINEERING & OPERATIONS ELECTRICAL MAINTENANCE



## ENGINEERING & OPERATIONS SCADA

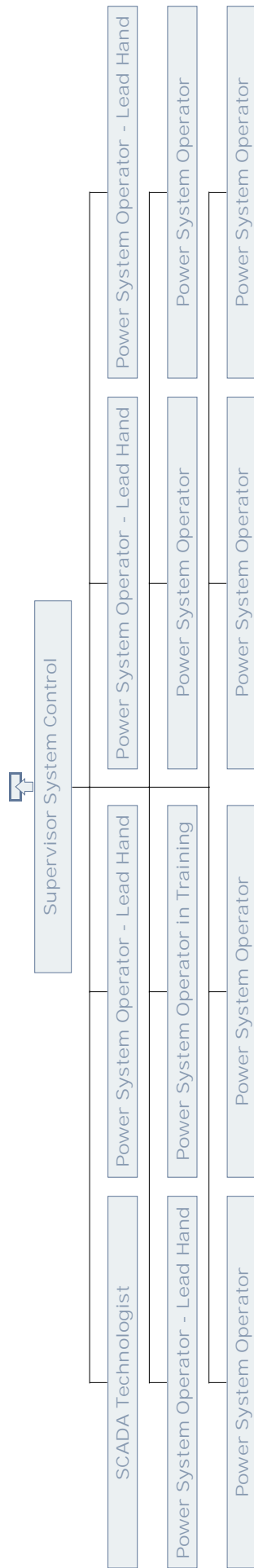


# ENGINEERING & OPERATIONS ELECTRICAL MAINTENANCE

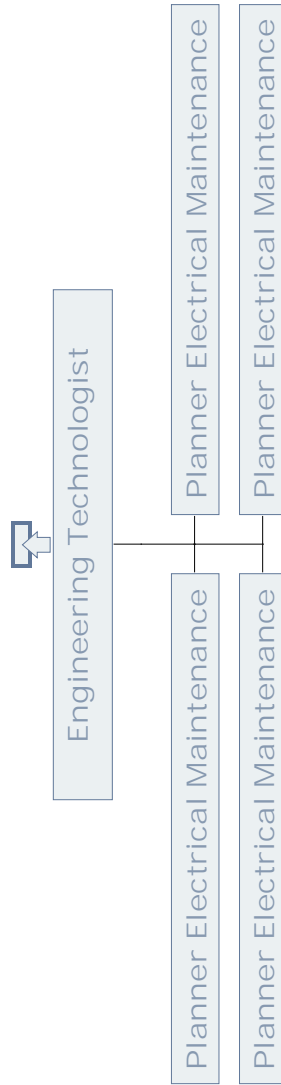




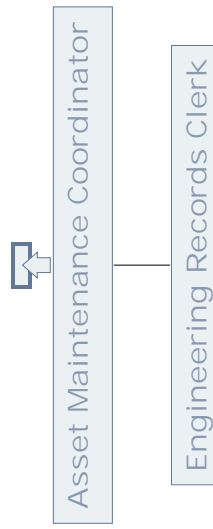
# ENGINEERING & OPERATIONS SYSTEM CONTROL



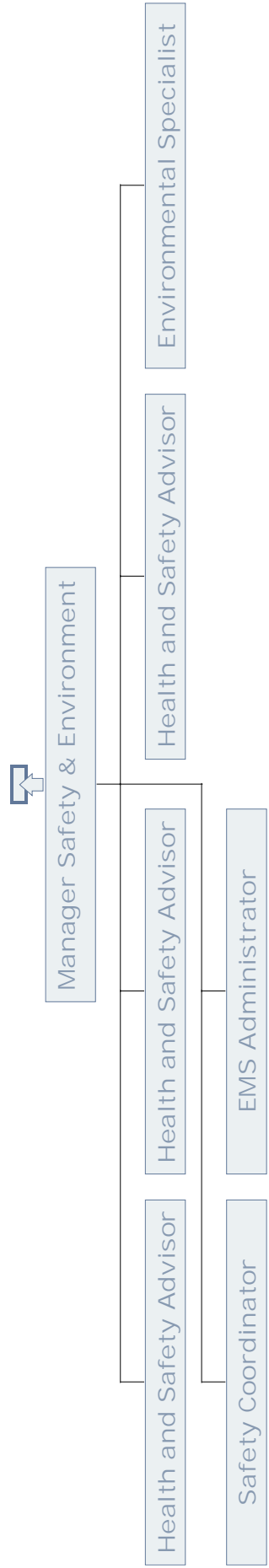
# ENGINEERING & OPERATIONS ENGINEERING



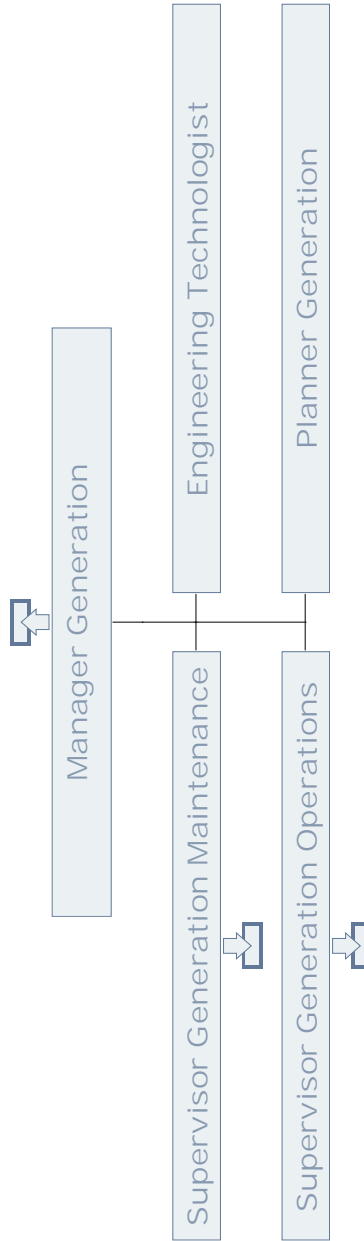
## ENGINEERING & OPERATIONS ELECTRICAL MAINTENANCE



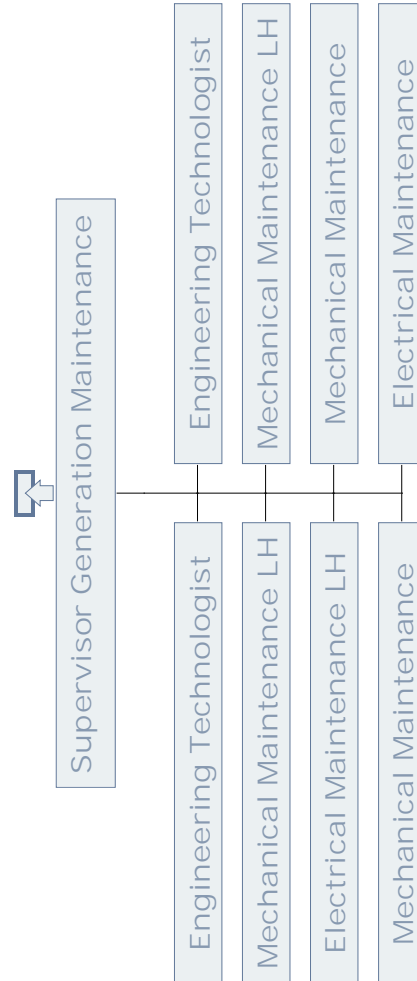
# ENGINEERING & OPERATIONS SAFETY & ENVIRONMENT



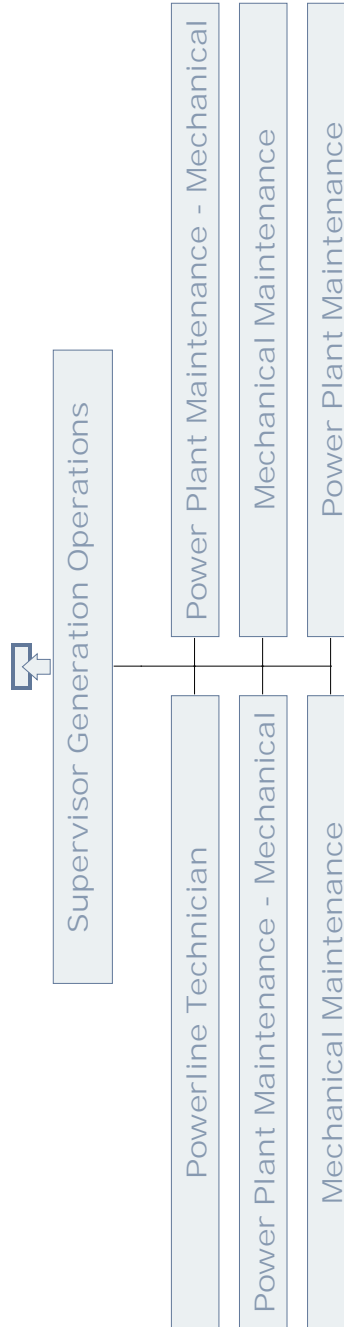
# ENGINEERING & OPERATIONS GENERATION



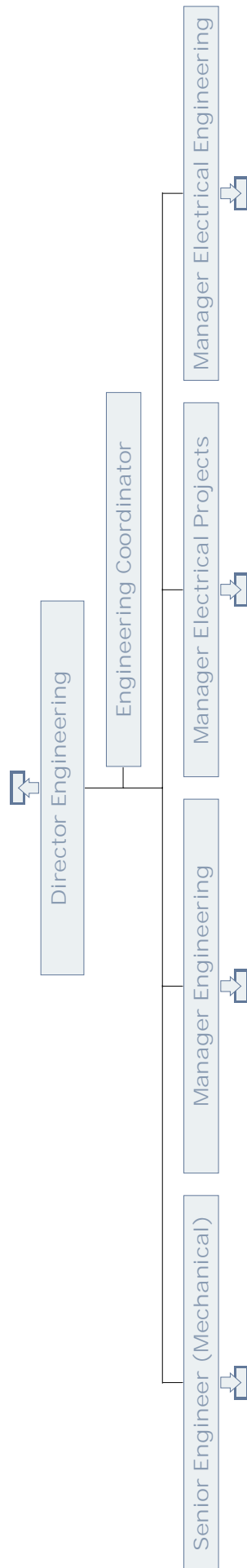
# ENGINEERING & OPERATIONS GENERATION MAINTENANCE



# ENGINEERING & OPERATIONS GENERATION OPERATIONS

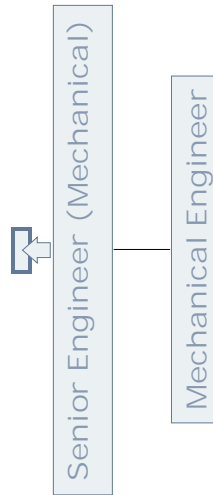


# ENGINEERING & OPERATIONS EASTERN ENGINEERING

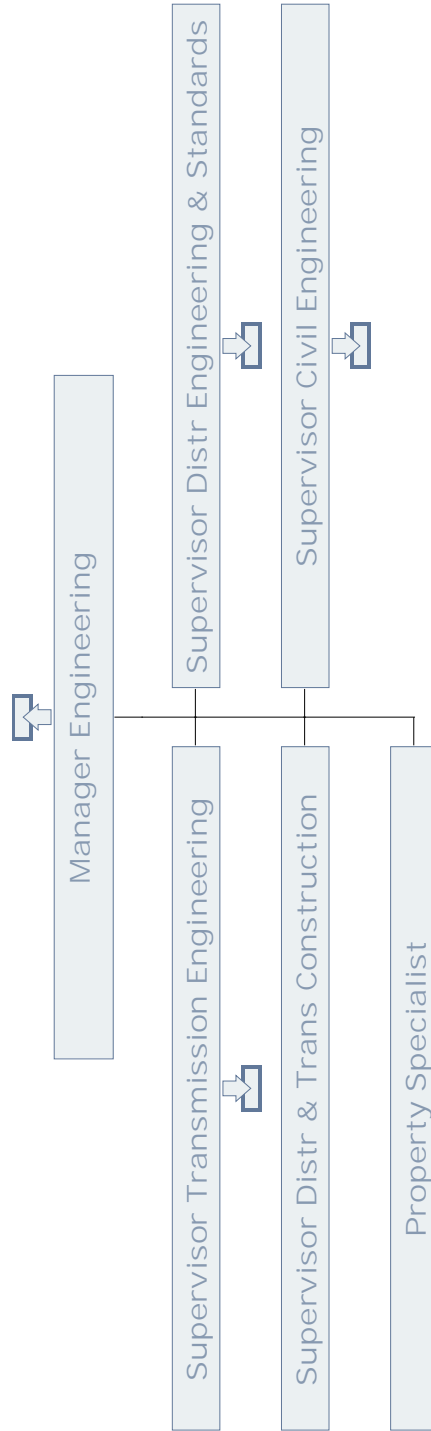




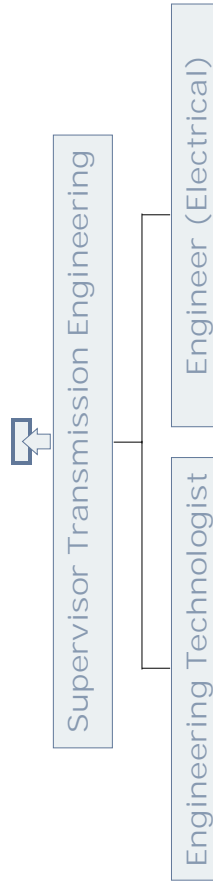
## ENGINEERING & OPERATIONS MECHANICAL ENGINEERING



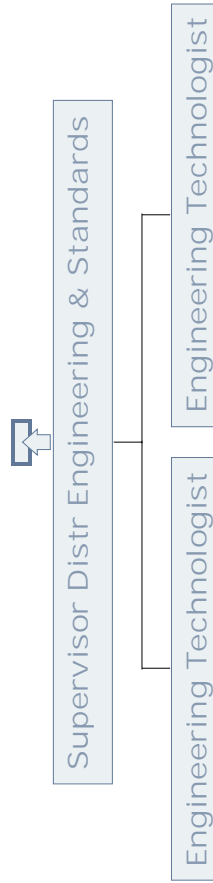
# ENGINEERING & OPERATIONS ENGINEERING



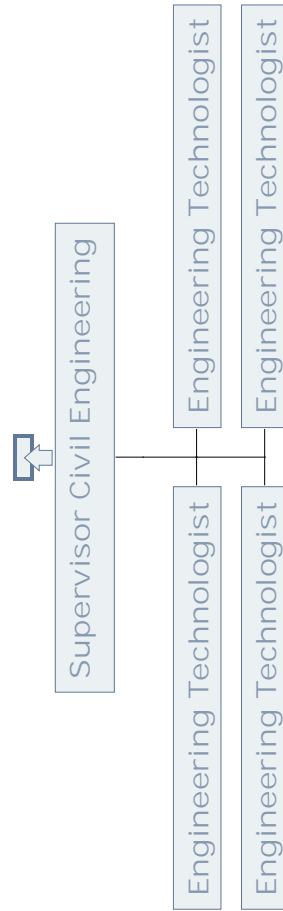
## ENGINEERING & OPERATIONS TRANSMISSION ENGINEERING



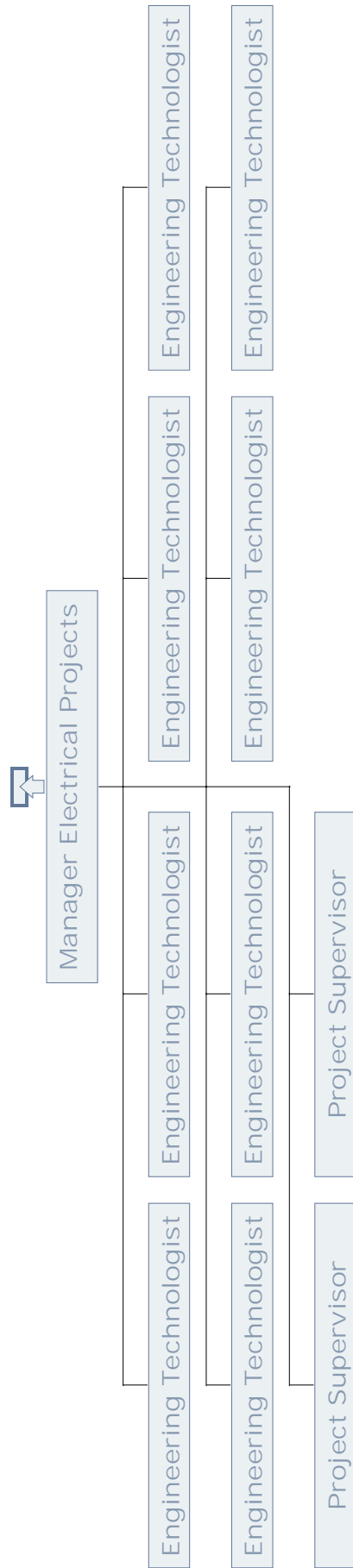
## ENGINEERING & OPERATIONS DISTRIBUTION ENGINEERING & STANDARDS



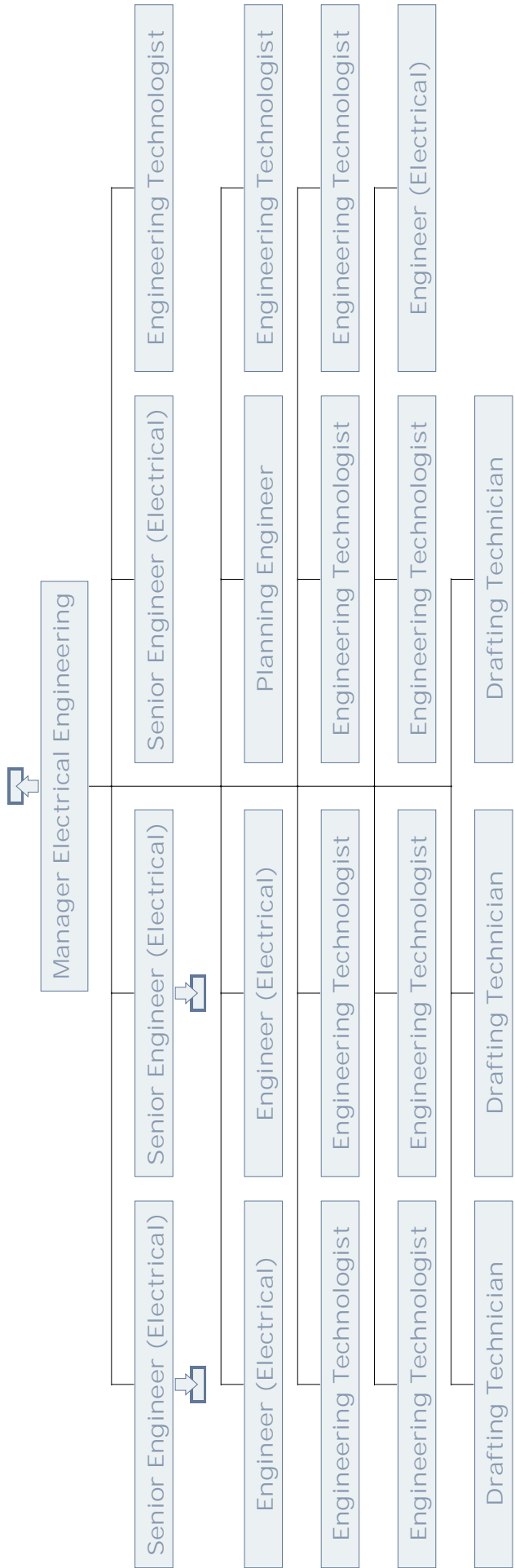
## ENGINEERING & OPERATIONS CIVIL ENGINEERING



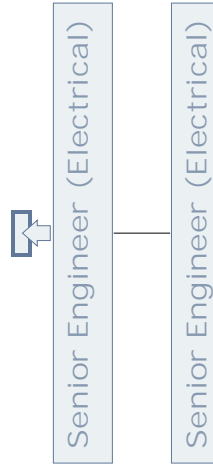
# ENGINEERING & OPERATIONS ELECTRICAL PROJECTS



# ENGINEERING & OPERATIONS ELECTRICAL ENGINEERING

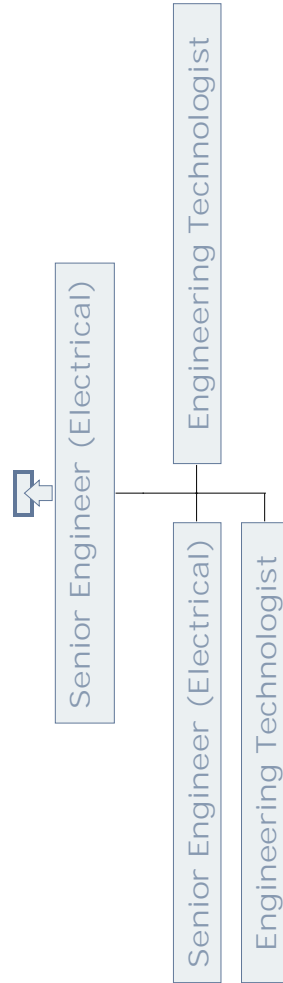


## ENGINEERING & OPERATIONS ELECTRICAL ENGINEERING

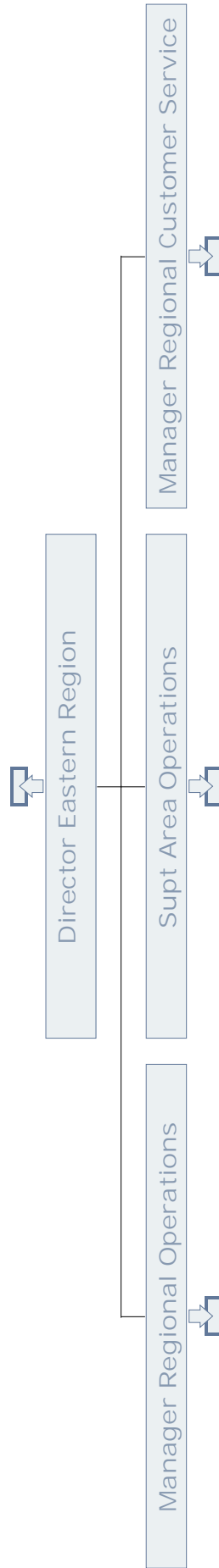




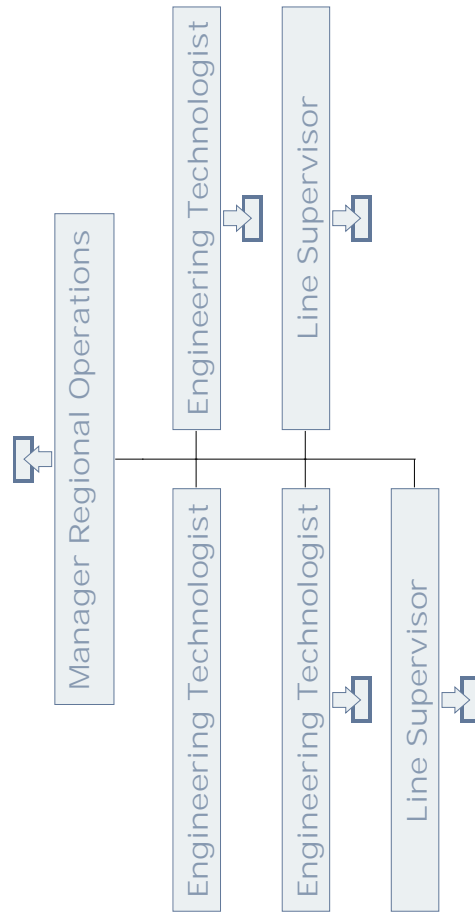
## ENGINEERING & OPERATIONS ELECTRICAL ENGINEERING



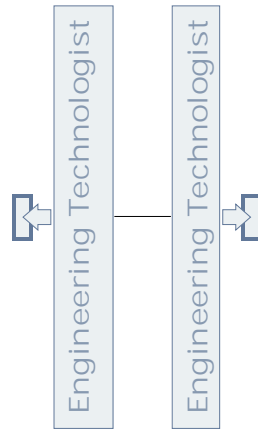
# ENGINEERING & OPERATIONS EASTERN REGION



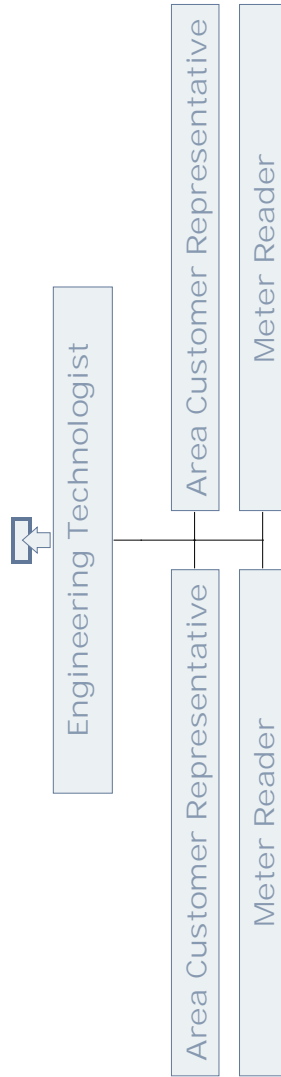
## ENGINEERING & OPERATIONS EASTERN REGION OPERATIONS (CLARENVILLE)



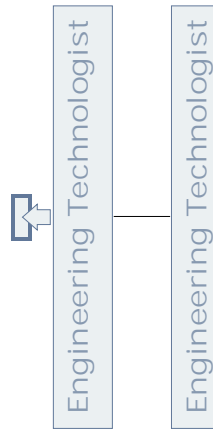
## ENGINEERING & OPERATIONS EASTERN REGION ENGINEERING - BURIN



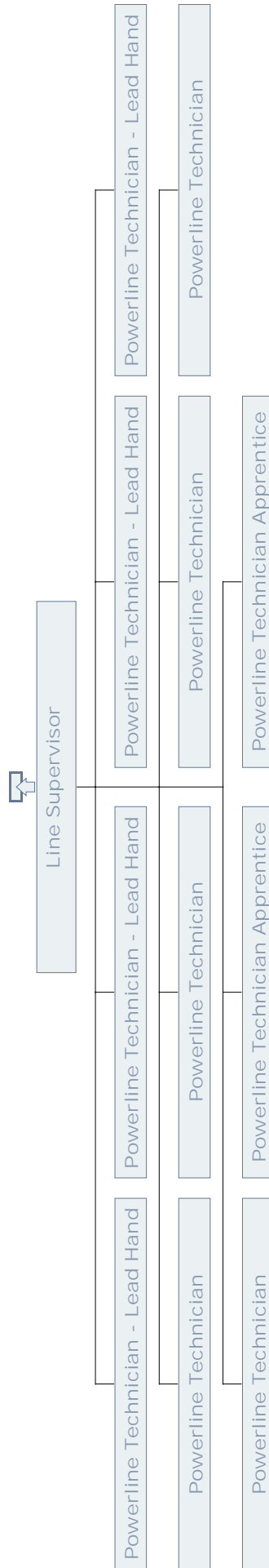
# ENGINEERING & OPERATIONS EASTERN REGION ENGINEERING - BURIN



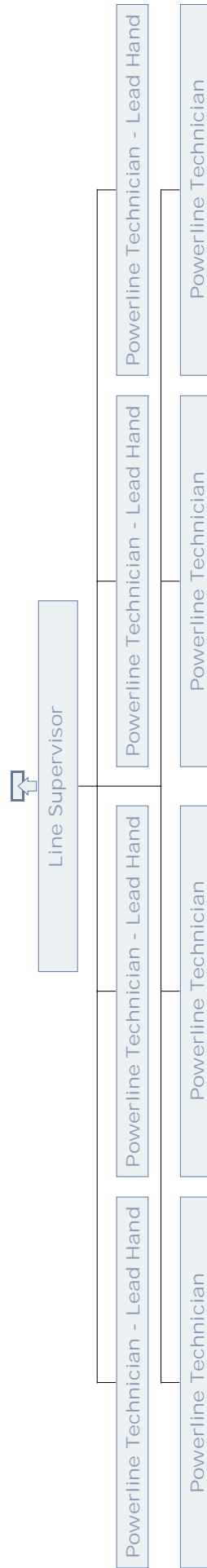
ENGINEERING & OPERATIONS  
EASTERN REGION OPERATIONS -CLARENVILLE



ENGINEERING & OPERATIONS  
EASTERN REGION OPERATIONS - CLARENVILLE

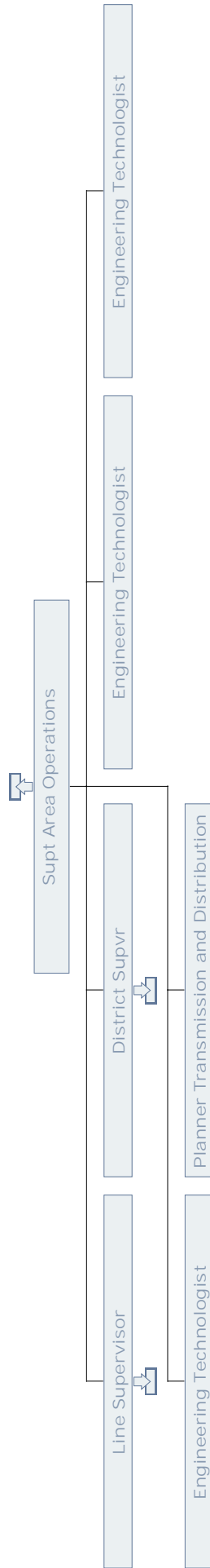


ENGINEERING & OPERATIONS  
EASTERN REGION OPERATIONS -BURIN

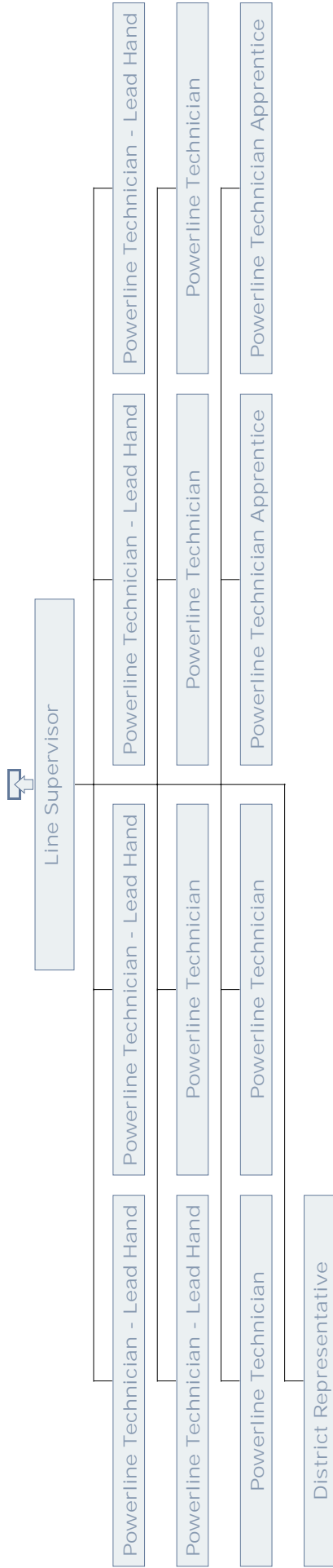




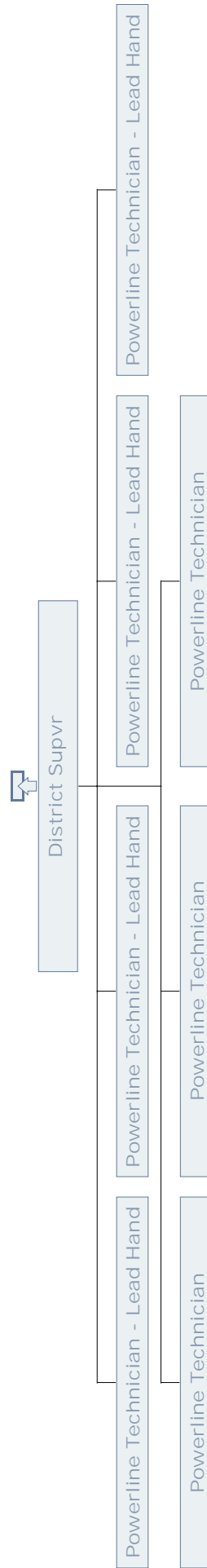
ENGINEERING & OPERATIONS  
EASTERN REGION AREA OPERATIONS



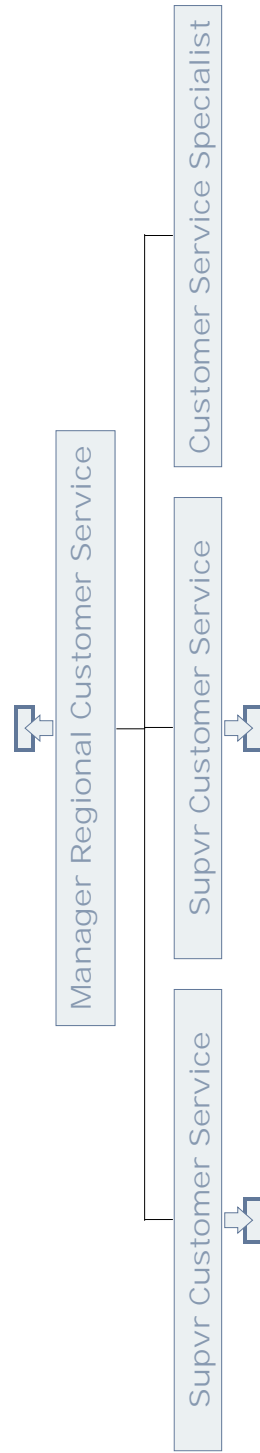
ENGINEERING & OPERATIONS  
EASTERN REGION AREA OPERATIONS - CARBONEAR



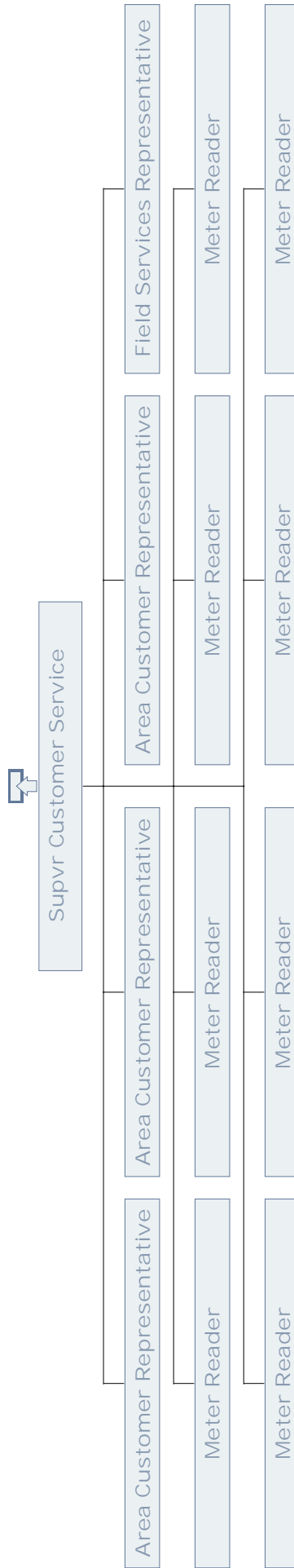
ENGINEERING & OPERATIONS  
EASTERN REGION AREA OPERATIONS -  
WHITBOURNE



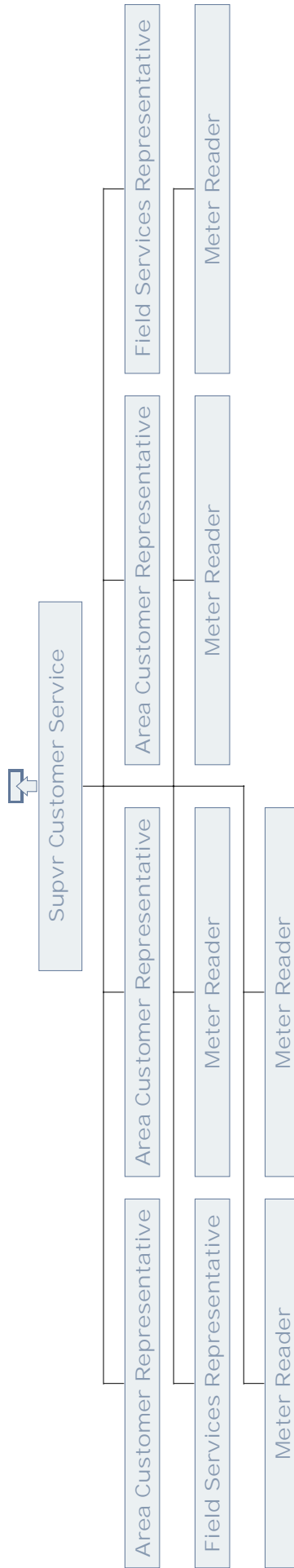
## CORPORATE & CUSTOMER RELATIONS CUSTOMER RELATIONS - CARBONEAR



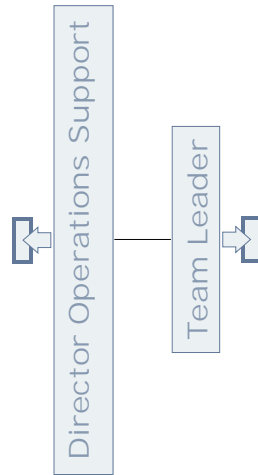
CORPORATE & CUSTOMER RELATIONS  
CUSTOMER RELATIONS - CARBONEAR



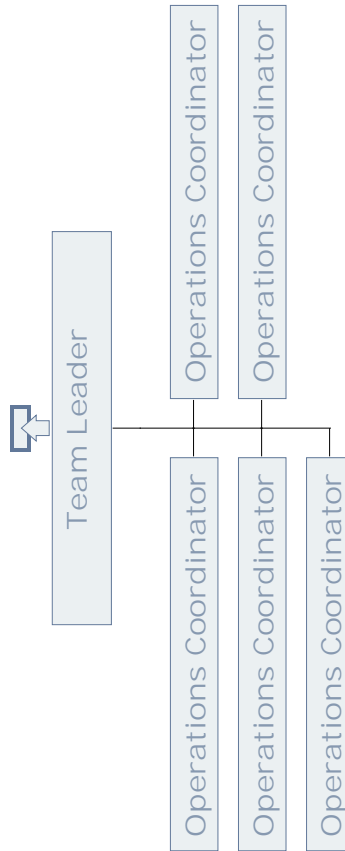
CORPORAE & CUSTOMER RELATIONS  
CUSTOMER SERVICE, CLARENVILLE



# ENGINEERING & OPERATIONS OPERATIONS SUPPORT

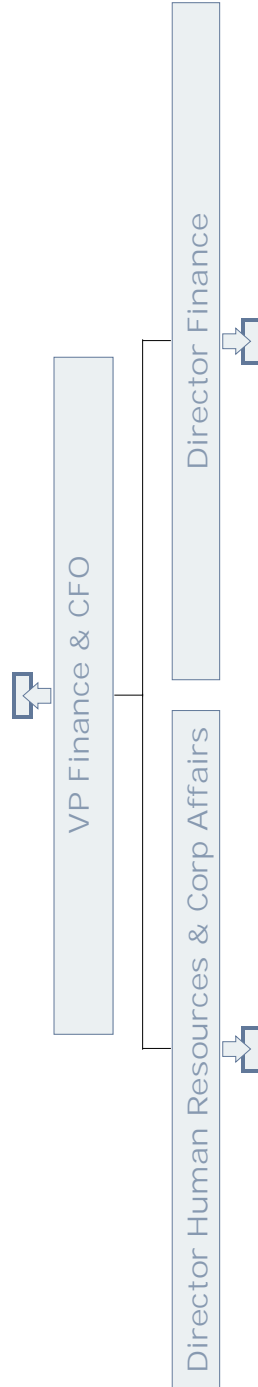


# ENGINEERING & OPERATIONS OPERATIONS SUPPORT

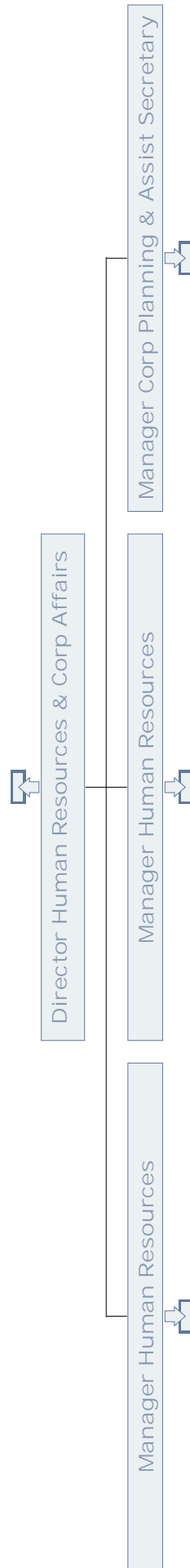




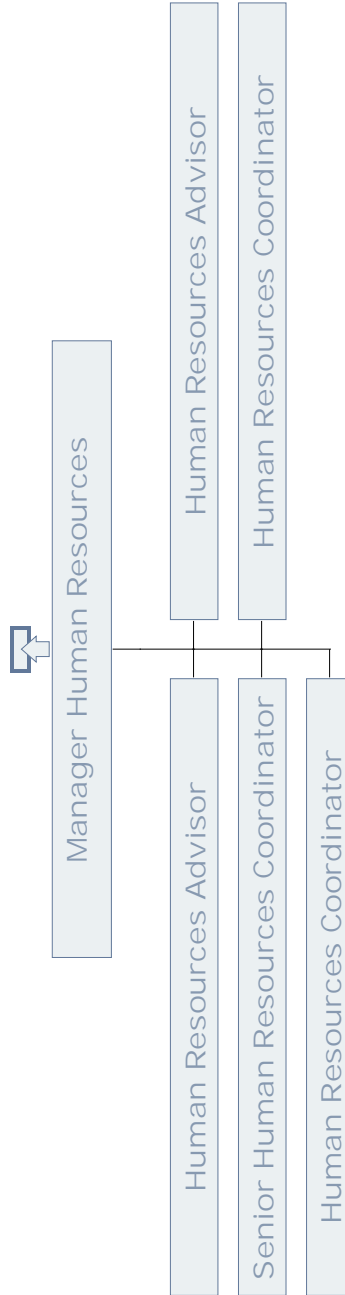
## CORPORATE AFFAIRS, FINANCE & HUMAN RESOURCES



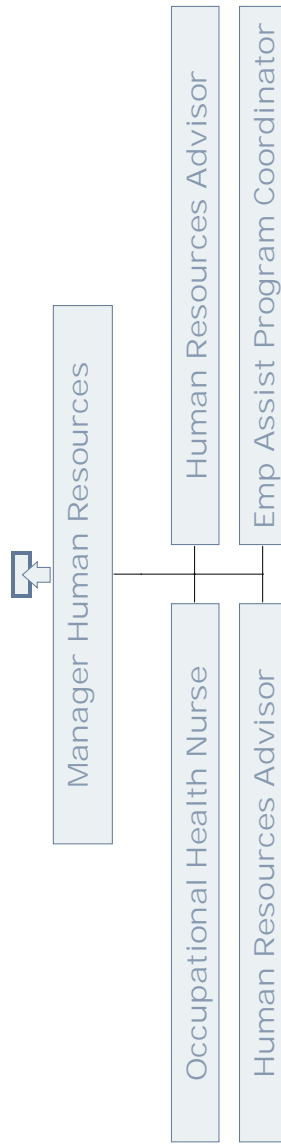
CORPORATE AFFAIRS, FINANCE & HUMAN RESOURCES  
HUMAN RESOURCES & CORPORATE AFFAIRS



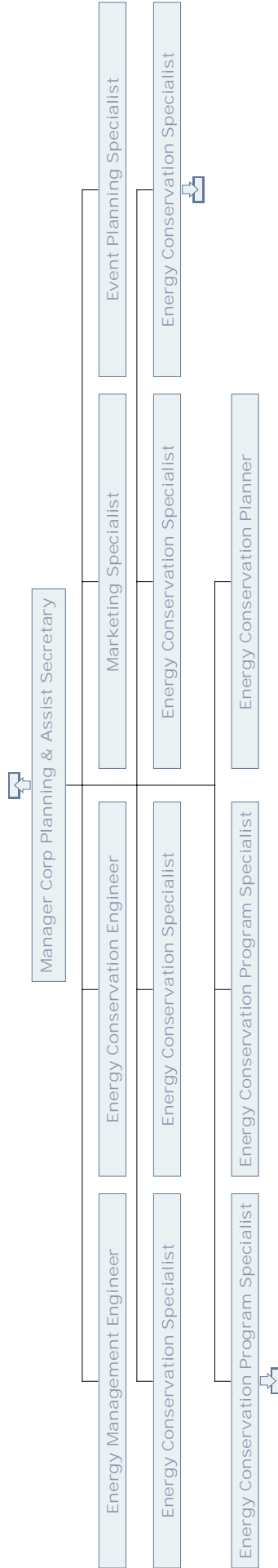
# CORPORATE AFFAIRS, FINANCE & HUMAN RESOURCES HUMAN RESOURCES



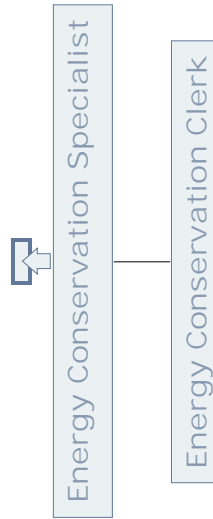
# CORPORATE AFFAIRS, FINANCE & HUMAN RESOURCES HUMAN RESOURCES



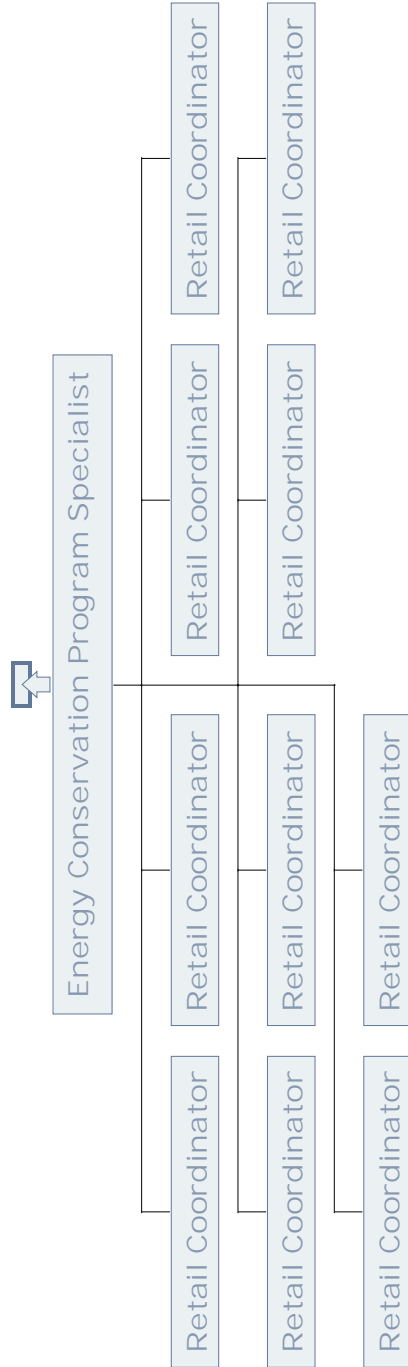
CORPORATE AFFAIRS, FINANCE & HUMAN RESOURCES  
CORPORATE AFFAIRS



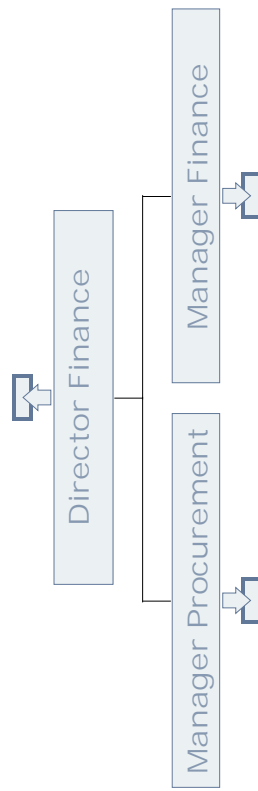
CORPORATE AFFAIRS, FINANCE & HUMAN RESOURCES  
ENERGY CONSERVATION



# CORPORATE AFFAIRS, FINANCE & HUMAN RESOURCES ENERGY CONSERVATION

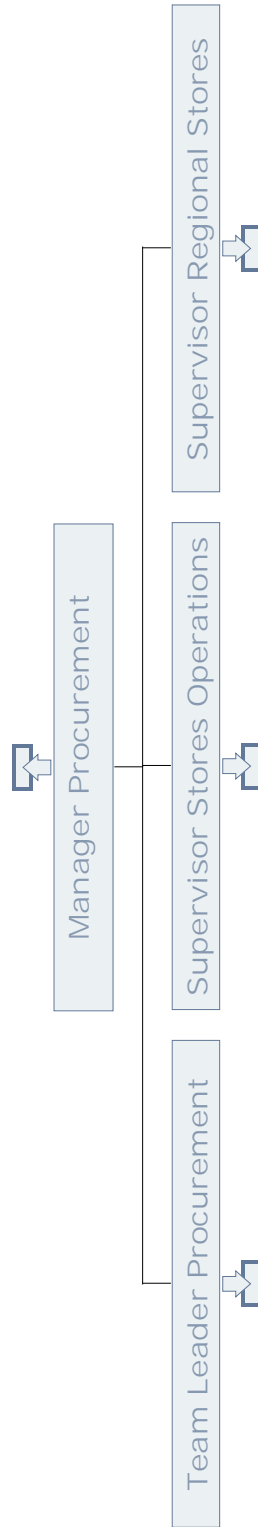


# CORPORATE AFFAIRS, FINANCE & HUMAN RESOURCES FINANCE

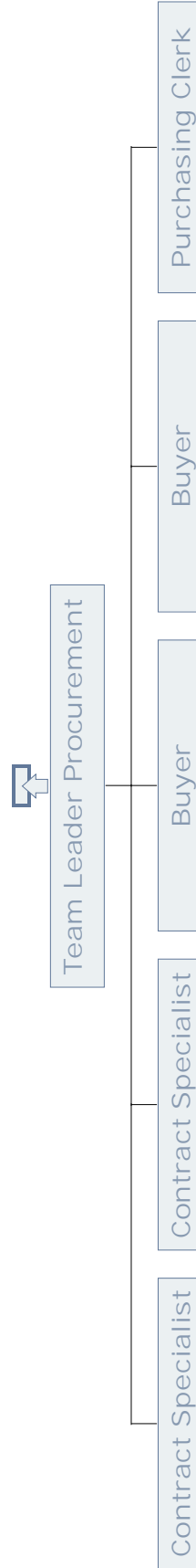




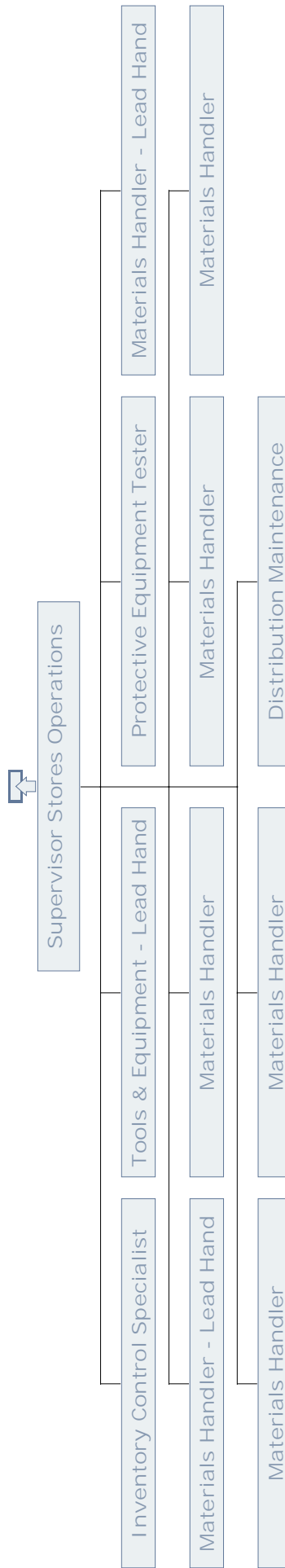
# CORPORATE AFFAIRS, FINANCE & HUMAN RESOURCES PROCUREMENT



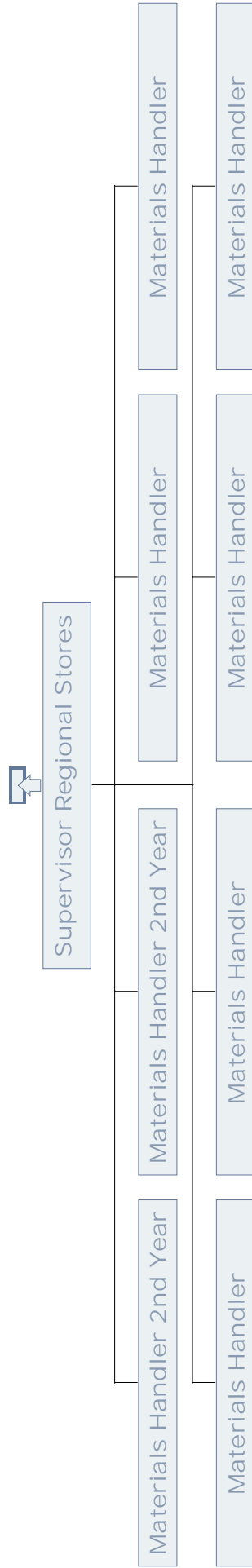
## CORPORATE AFFAIRS, FINANCE & HUMAN RESOURCES PROCUREMENT



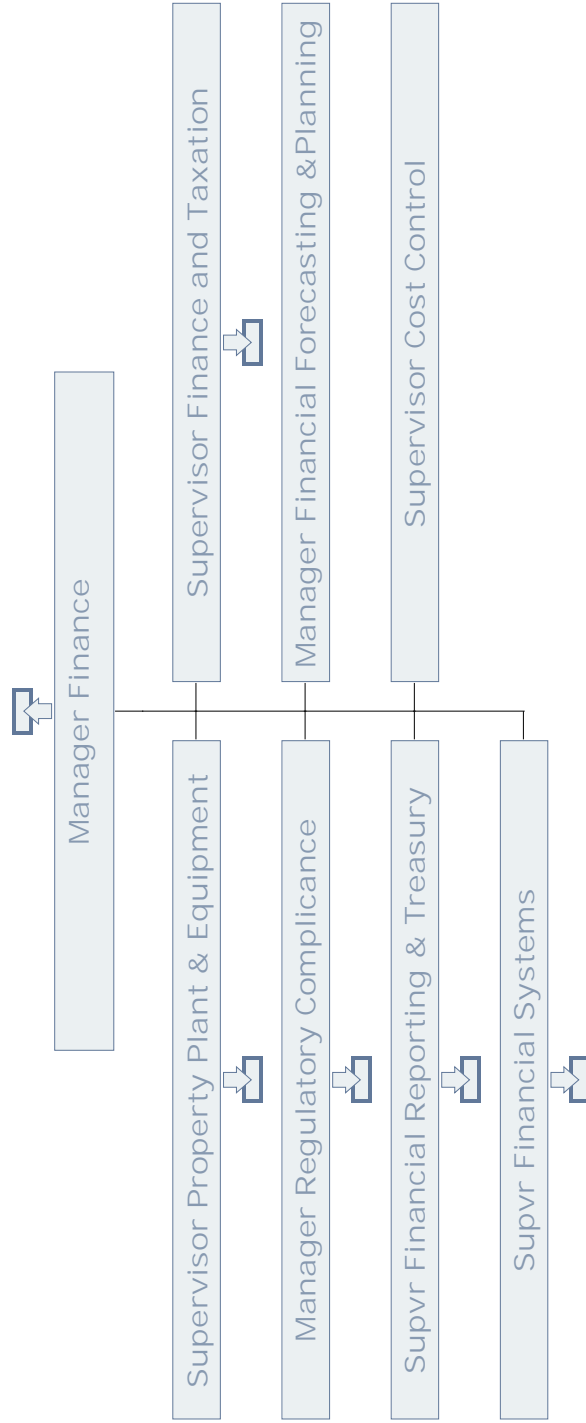
CORPORATE AFFAIRS, FINANCE & HUMAN RESOURCES  
STORES OPERATIONS



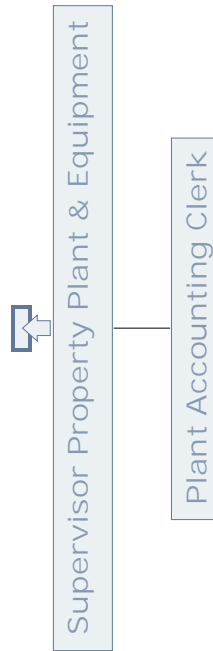
CORPORATE AFFAIRS, FINANCE & HUMAN RESOURCES  
REGIONAL STORES



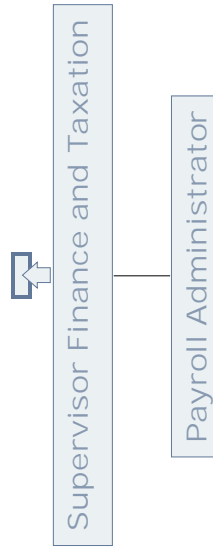
CORPORATE AFFAIRS, FINANCE & HUMAN RESOURCES  
FINANCE



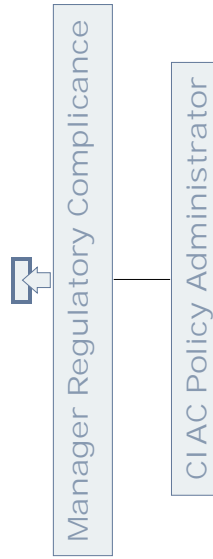
CORPORATE AFFAIRS, FINANCE & HUMAN RESOURCES  
PROPERTY PLANT & EQUIPMENT



CORPORATE AFFAIRS, FINANCE & HUMAN RESOURCES  
FINANCE & TAXATION

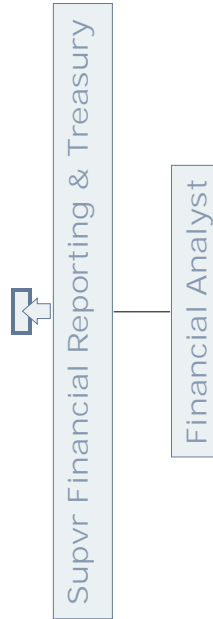


## CORPORATE AFFAIRS, FINANCE & HUMAN RESOURCES REGULATORY COMPLIANCE

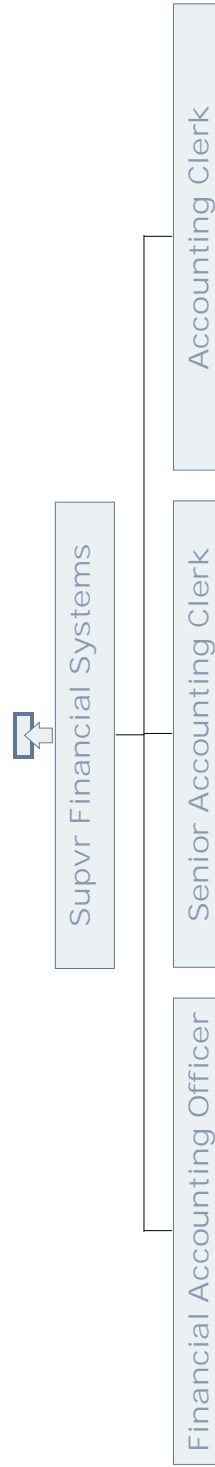




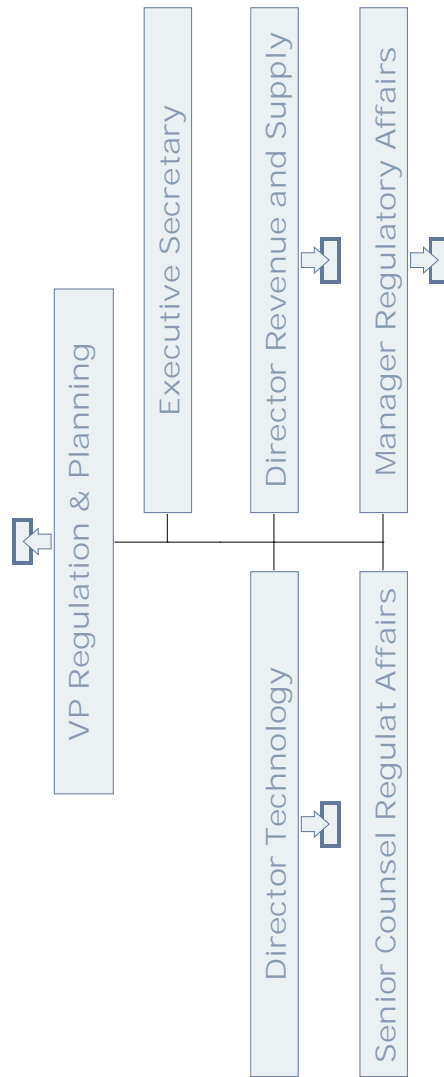
CORPORATE AFFAIRS, FINANCE & HUMAN RESOURCES  
FINANCIAL REPORTING & TREASURY



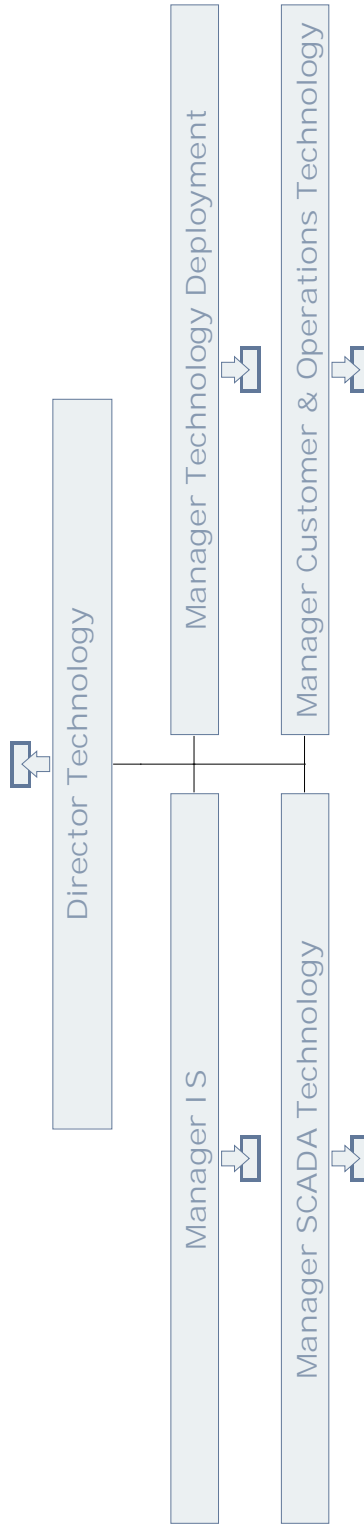
## CORPORATE AFFAIRS, FINANCE & HUMAN RESOURCES FINANCIAL SYSTEMS



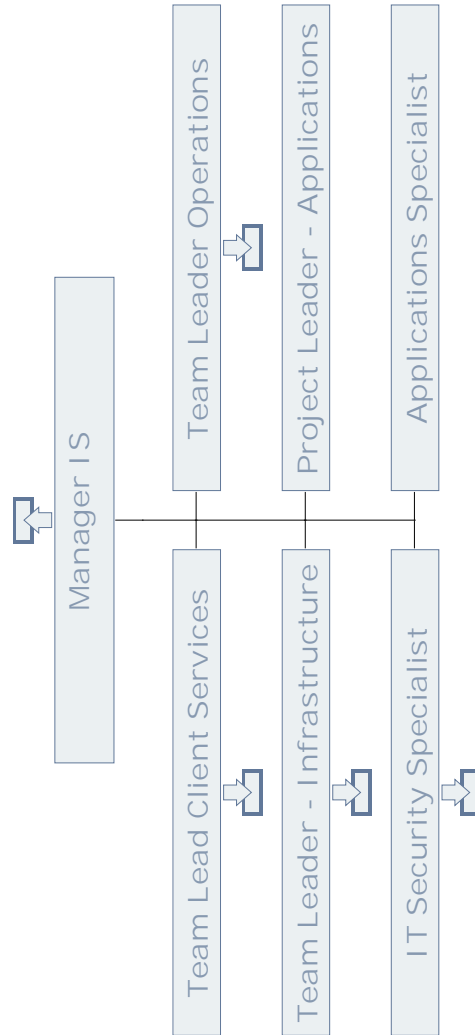
## REGULATION & PLANNING



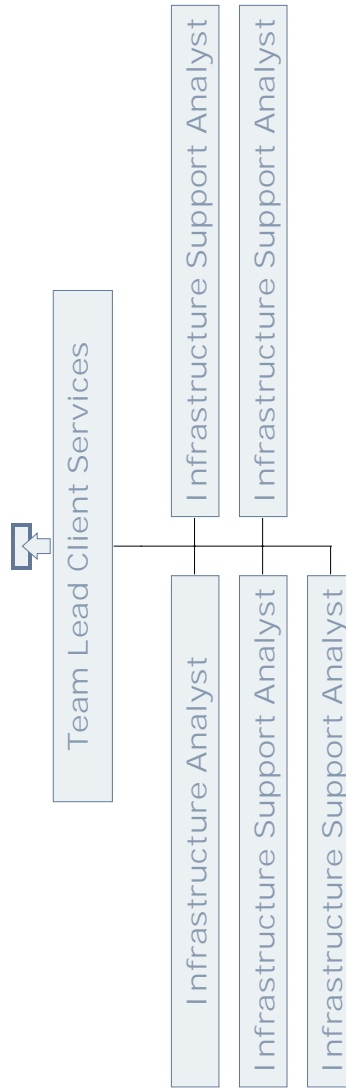
# TECHNOLOGY



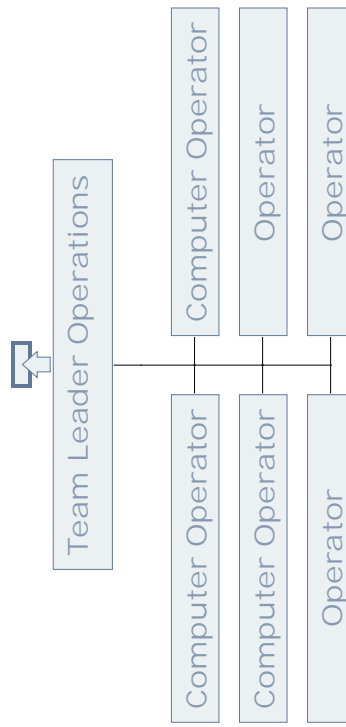
# TECHNOLOGY INFORMATION SYSTEMS



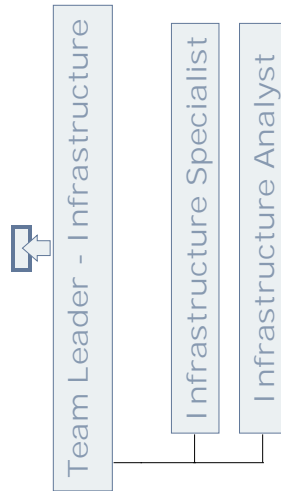
## TECHNOLOGY INFORMATION SYSTEMS - CLIENT SERVICES



# TECHNOLOGY INFORMATION SYSTEMS - OPERATIONS

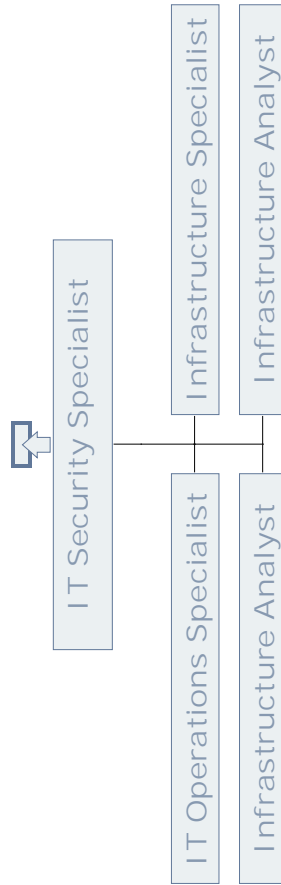


# TECHNOLOGY INFORMATION SYSTEMS - INFRASTRUCTURE

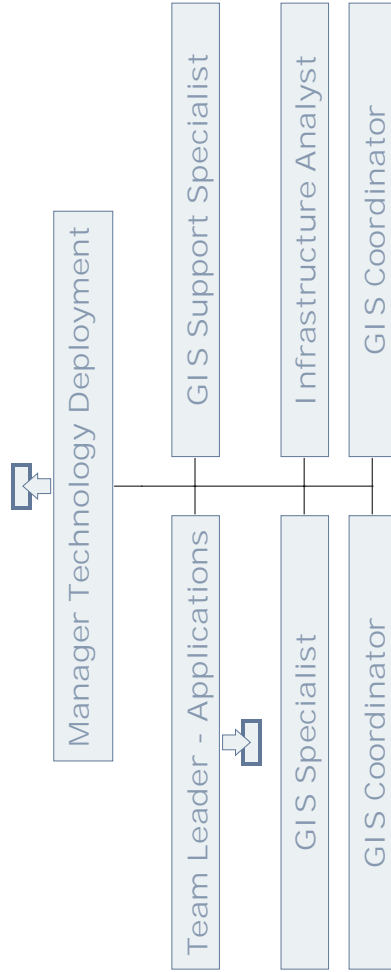




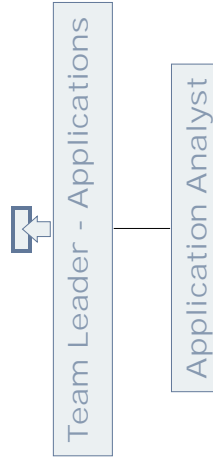
# TECHNOLOGY INFORMATION SYSTEMS - SECURITY



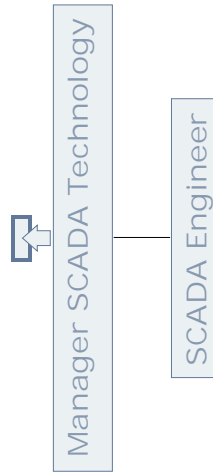
# TECHNOLOGY TECHNOLOGY - DEPLOYMENT



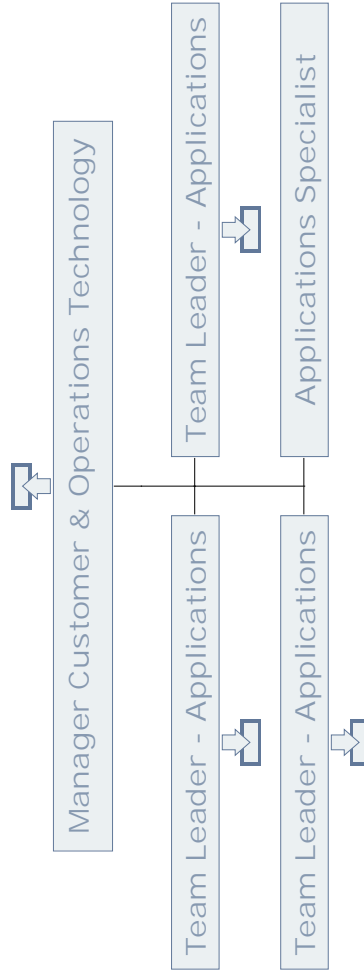
# TECHNOLOGY TECHNOLOGY DEPLOYMENT - APPLICATIONS



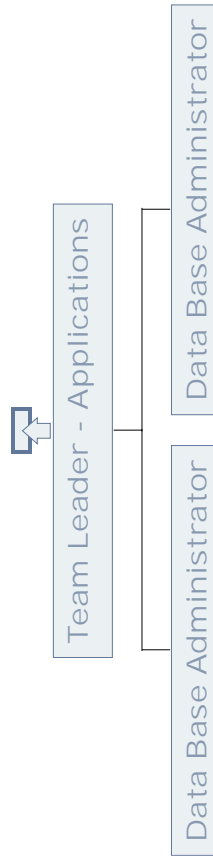
TECHNOLOGY  
SCADA



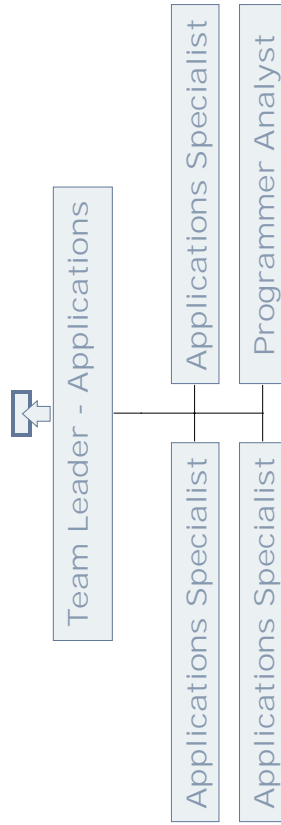
# TECHNOLOGY CUSTOMER & OPERATIONS TECHNOLOGY



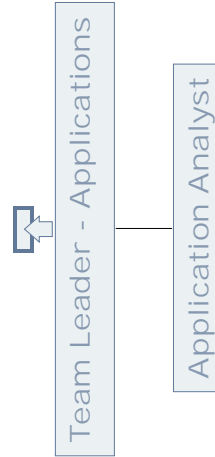
# TECHNOLOGY CUSTOMER & OPERATIONS TECHNOLOGY - APPLICATIONS



# TECHNOLOGY CUSTOMER & OPERATIONS TECHNOLOGY - APPLICATIONS

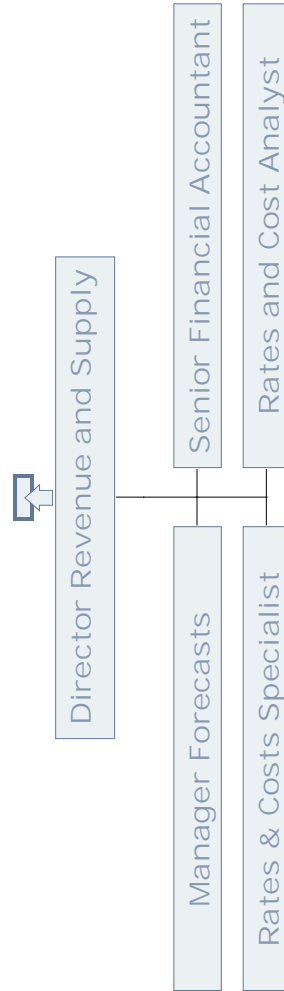


TECHNOLOGY  
CUSTOMER & OPERATIONS TECHNOLOGY - APPLICATIONS

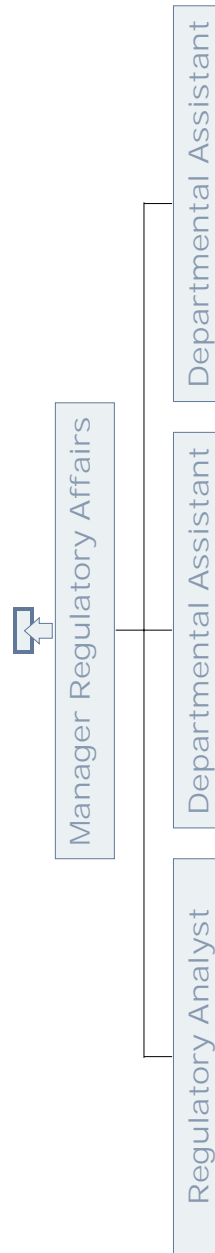




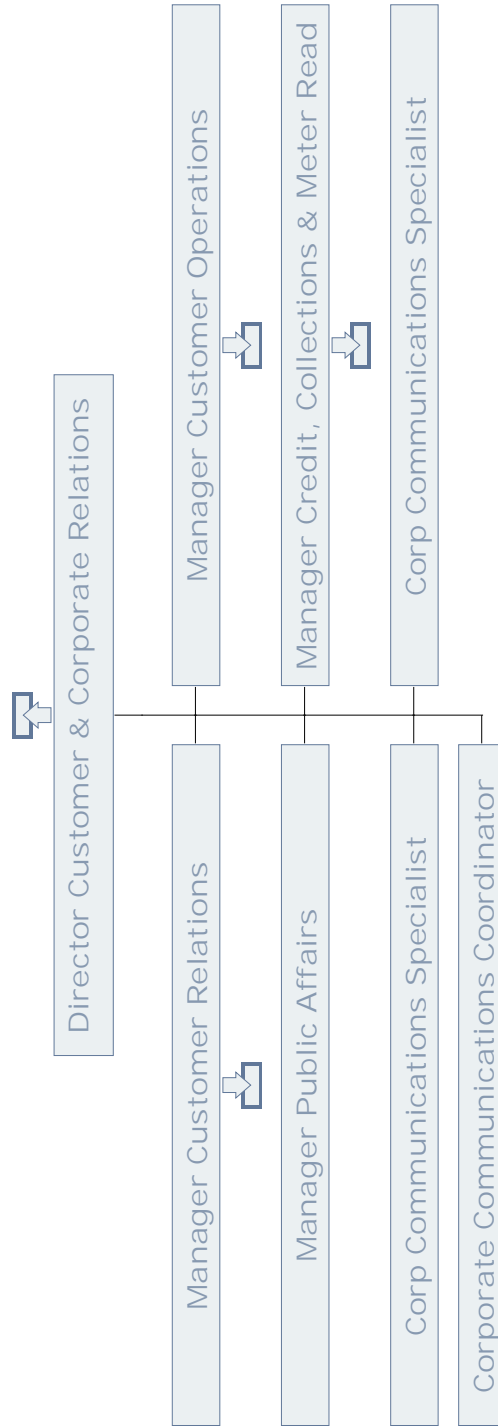
## REGULATION & PLANNING REVENUE & SUPPLY



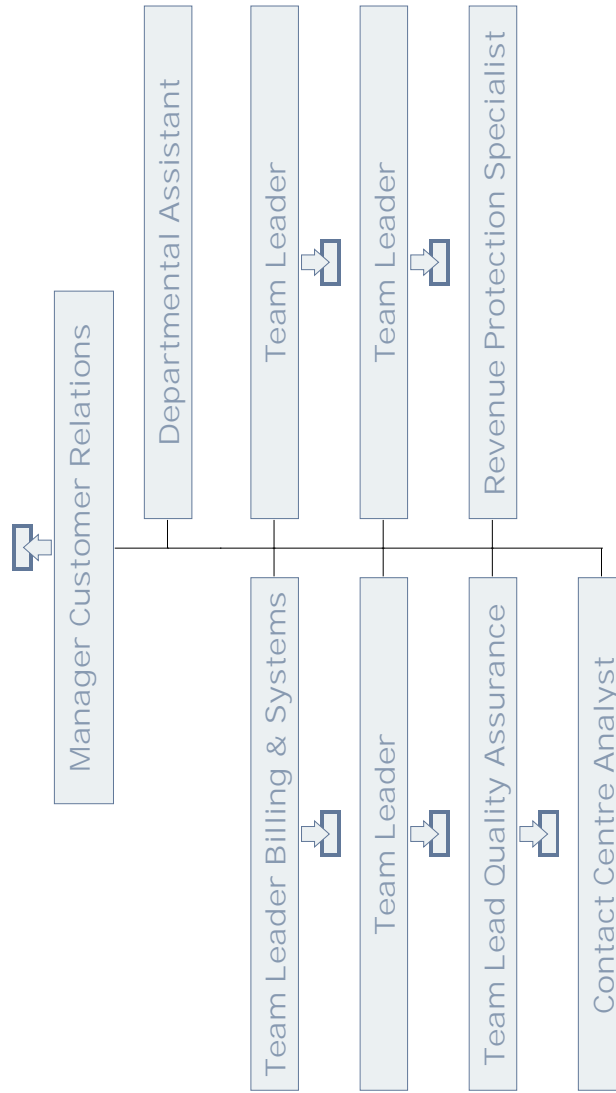
## REGULATION & PLANNING REGULATORY AFFAIRS



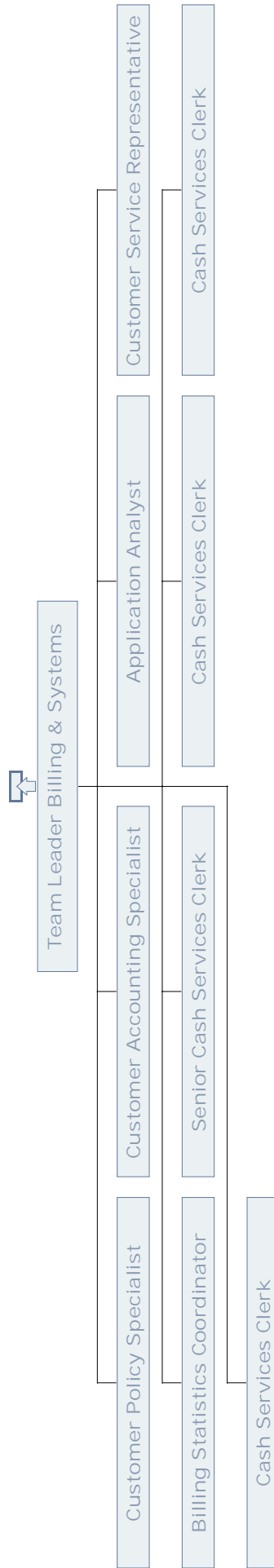
## CUSTOMER & CORPORATE RELATIONS



# CUSTOMER & CORPORATE RELATIONS CUSTOMER RELATIONS



CUSTOMER & CORPORATE RELATIONS  
BILLING & SYSTEMS



CUSTOMER & CORPORATE RELATIONS  
CUSTOMER SERVICE



CUSTOMER & CORPORATE RELATIONS  
CUSTOMER SERVICE



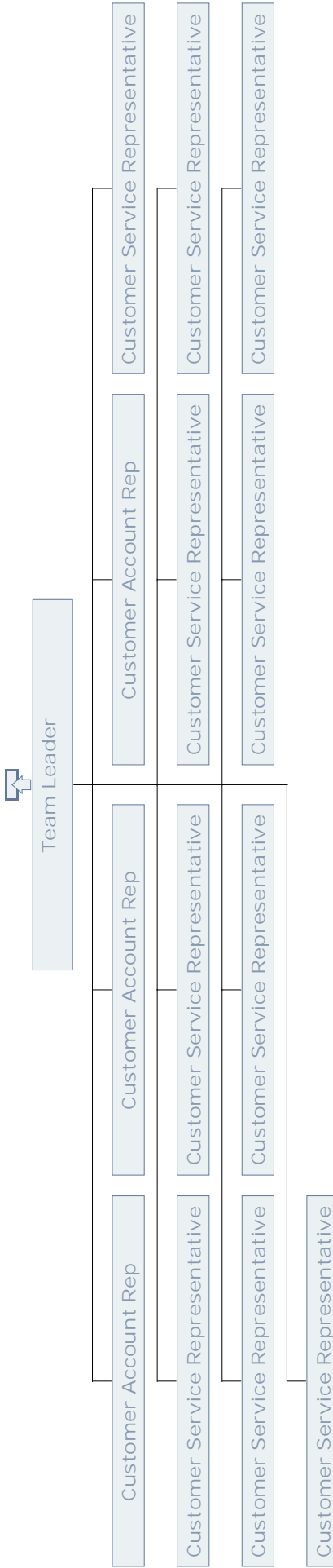
Team Leader

Senior Customer Service Representative

Senior Customer Service Representative

Senior Customer Service Representative

CUSTOMER & CORPORATE RELATIONS  
CUSTOMER SERVICE

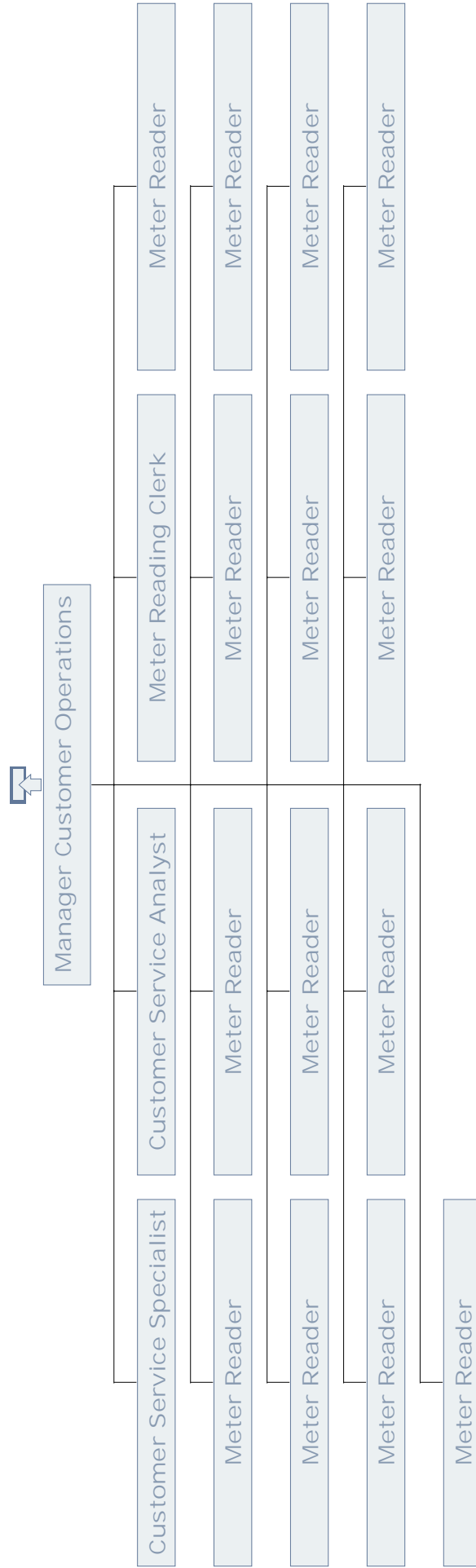




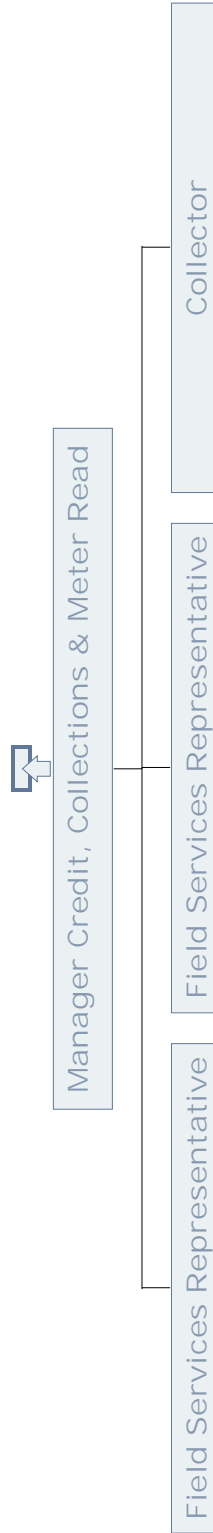
CUSTOMER & CORPORATE RELATIONS  
QUALITY ASSURANCE



CUSTOMER & CORPORATE RELATIONS  
 CUSTOMER OPERATIONS



## CUSTOMER & CORPORATE RELATIONS CREDIT, COLLECTIONS & METER READING



## INTERNAL AUDIT

