

1 **Q. In Chart 1 and Chart 2, does the Atlantic Region include Newfoundland Power?**

2
3 A. Yes. Chart 1 and Chart 2 in the *Vehicle Replacement Criteria Report* include
4 Newfoundland Power in the Atlantic Region.

5
6 Charts 1 and 2 below show the same Canadian survey results data used in Chart 1 and 2
7 of the report 5.1 *Vehicle Replacement Criteria* with Newfoundland Power excluded.
8
9

Chart 1
Canadian Survey Results
Vehicle Replacement by Age
(Newfoundland Power Excluded)

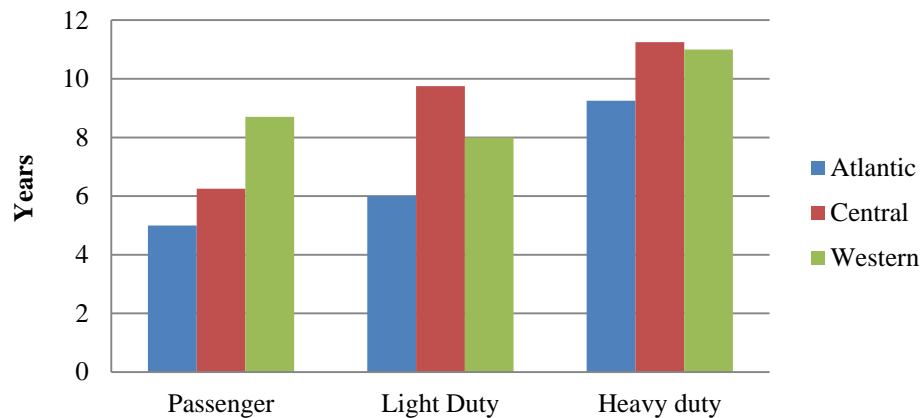
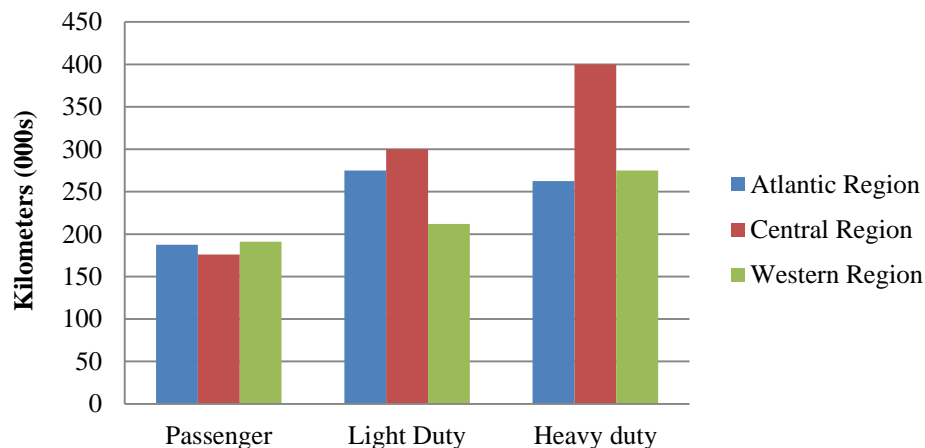


Chart 2
Canadian Survey Results
Vehicle Replacement by Kilometers Driven
(Newfoundland Power Excluded)



- 1 Charts 1 and 2 show that with Newfoundland Power excluded from the Canadian survey
- 2 results, the age and kilometers driven at which vehicles are replaced does not change
- 3 materially.