

1 Q. Re p. B-59, provide particulars of the upgrade requested for each type of  
2 software mentioned, including what, if any, enhancements to performance  
3 will be provided thereby, and provide copies of communications from vendors  
4 outlining the consequences, if any, of not proceeding with such upgrades.

5  
6

7 A. Hydro has adopted a policy of keeping all software releases current to allow  
8 the software to be supported by the vendor and the hardware in use.

9

10 (a) **JD Edwards**

11 This is to allow for the upgrade of software to the latest release.

12 Enhancements are described in attachment 1.

13

14 (b) **Showcase Upgrade**

15 The upgrade to Showcase is from Version 6.2 to 6.5. Enhancements are  
16 described in attachment 2.

17

18 (c) **Lotus Notes**

19 The upgrade to Lotus Notes is the movement from Lotus Release 5 to Lotus  
20 Release 6. Enhancements are described in attachment 3.

21

22 (d) **AS400 OS**

23 This is to allow for the upgrade to the latest operating system level which is  
24 supported until September of 2004. The current operating system release is  
25 the last version which will support the hardware it is currently running on.

26 Enhancements are described in attachment 4.

NLH 2004 Capital Budget IC-30

**Attachment 1**

## ***Enhancement Highlights***

### ***Release A7.3 Cumulative Update 14***

Cumulative Update 14 includes approximately 150 enhancements to release A7.3. Following are select highlights from the update.

---

#### ***Financial Management***

##### ***General Accounting***

###### ***Refine the FASTR download process and minimize IT intervention***

---

Select Library for  
FASTR Downloads  
*SAR 3600554*

Additional flexibility has been added to the FASTR download feature. Now, when downloading a FASTR report to PC, instead of accepting the default QGPL library, the user can specify a download library. This enhancement increases user autonomy and control; additionally, it eliminates issues related to QGPL maintenance, performance, and security.

To incorporate this feature, add the download library, which must contain file F8309 and member F8301, to the top of the users library list.

###### ***Take advantage of enhancements to financial reporting and inquiry***

---

Account Ledger Inquiry  
– Print with Additional  
Selections  
*SAR 1031132*

One of the most widely used inquiries, Account Ledger Inquiry, puts transaction information at your fingertips. Additional Selections, such as posted code and batch number, make it easy to locate transactions. Enhanced account ledger printing now also considers Additional Selections. Now, what you select to view through the inquiry program matches the account ledger print.

Currency Restatement  
*SAR 4277031*

Companies operating in countries with highly inflationary currencies often need to report financial results in two currencies. The Detailed Currency Restatement program has been enhanced so that records will be created in the alternate (XA) ledger even it has the same currency as the domestic (AA) ledger. This gives you greater flexibility reporting from the restated ledger for all companies set up for detailed restatement.

Simple Income  
Statement  
*SAR 3235518*

The Simple Income Statement now accommodates 15-position amount fields when printed in 132-character format. It is no longer necessary to switch to legal paper when amount fields reach \$999,999,999.99.

## ***Fixed Assets***

### ***Simplify management of fixed assets***

---

Omit AU Entries When  
Posting G/L Entries to  
Assets  
*SAR 5892095*

When posting fixed asset journal entries to the Item Balances table, you can now optionally omit creation of the units ledger if units are present in the journal entry. This feature eliminates unnecessary information in the Item Balances table for those customers who do not track units.

Depreciation Start Date  
Warning  
*SAR 5411757*

When entering an item, if the depreciation start date is less than the acquired date, the system displays a warning message.

Expanded Item Search  
*SAR 5402332*

If your business requires hundreds of items with the same description, you may have experienced limitations when using Item Search to locate the item number. Item Search has been expanded to return up to 9900 records when you search by alpha name.

## ***Accounts Payable and Accounts Receivable***

### ***Enhanced Invoice Printing***

---

Print Additional Text on  
Customer Invoices  
*SAR 3484021*

The ability to associate text with invoices allows you to store key information about the invoice. With enhanced invoice printing, you can communicate additional information to your customers. Additional text added during invoice entry can now be printed on the invoice.

### ***Streamline internal balancing procedures and quickly spot out-of-balance conditions***

---

Include Integrity Detail  
A/P to G/L by Offset  
A/R to G/L by Offset  
*SAR 4800005*

Save time identifying potential balancing problems between your A/R and A/P ledgers and Account Balances. New processing options allow you to zero in on only out-of-balance accounts and to select the detail to print. With the option to print ledger detail and to print only ledger records considered out-of-balance (calculated gross does not equal the ledger open amount), you can quickly focus on the documents that may be causing the out-of-balance condition.

### ***Step up automation and increase user flexibility during payment processing***

---

#### **Payment Batch Void**

*SAR 5516479*

A new program provides quick recovery from payment processing errors. If an entire batch is in error, you can delete it if it is unposted or void it if it is posted. When you select the batch to void, you can select a void date or use the original payment date, and you can review the void report prior to finalizing.

#### **Payment Register Print Instructions Enabled**

*SAR 840528*

A/P clerks can now easily direct the printing of payment registers. Through a simple form, users can select print option such as output queue, form type, and save or hold print file.

#### **Written Payment Amounts Increased to Two Lines**

*SAR 5700760*

During Payment Processing, when a payment's numeric amount was translated to words, only one print line was available for the text. Now, Payment Processing can handle up to 2 lines or 168 characters of text.

### ***Improve controls and data integrity during invoice and payment processing***

---

#### **Control Changes to Vendor Invoice Number**

*SAR 5879528*

Improve document control by determining whether or not a user can change the Vendor Invoice Number if the voucher has already been posted. Through a new processing option, you can prevent users from changing the Vendor Invoice Number on posted vouchers.

#### **Manual Payment Processing – Use Bank Account File for Payment Number**

*SAR 2110300*

A new processing option value has been added that provides more control over payment number assignment. By optionally prohibiting manual entry of the payment number, you reduce the chance of entry error and eliminate duplicate check number issues.

#### **Next Payment Number Protection**

*SAR 5705202*

A new processing option has been added that prevents users from changing the Next Payment Number value. Preventing users from changing Next Payment Number reduces the risk of users creating payments with duplicate numbers.

### ***Satisfy International Banking requirements***

---

#### **Identify Bank Accounts According to International Banking Standards**

*SAR 5418781*

The addition of an International Bank Account Number (IBAN) to your Bank Account Information prepares you for future requirements yet to be set by the European Committee for Banking Standards. The IBAN uniquely identifies your bank accounts used for A/P and A/R money transfers. In the future, the IBAN will be included in selected country A/P payment programs.

## ***Human Resources Management***

### ***HR and Payroll***

#### ***Take advantage of pay period processing enhancements***

---

##### **Multiple Inception-to-Date Limits**

*SAR 3128691*

Companies with fiscal anniversary accruals can now have multiple inception-to-date limits associated with a single accrual. The ability to associate an inception-to-date limit with each range in your calculation table allows you to more easily administer your company's benefits plan.

##### **Pay period time taken included in accrual calculation**

*SAR 3128691*

Accruals with inception-to-date limits now take into account all current pay period activity related to the accrual. If current pay period taken amounts bring an employee below the inception-to-date limit, the accrual will calculate in that same payroll cycle.

##### **Managing Pay Period Deductions and Arrearages**

*SAR 5610369*

When an employee doesn't have enough pay to cover deductions, your deduction setup determines if amounts are placed in arrears and, if so, how those amounts will be deducted in the future. A change to Arrearage Method H provides more accurate deduction processing. If an employee has enough money to take the current deduction but not the arrearage amount, the current deduction will be taken.

##### **Negative Time Processing**

*SAR 5716913*

Enhanced negative time processing now makes it easier to correct pay processing errors, providing a solid audit trail and eliminating the need for manual journal entries. The ability to process only negative time through the payroll cycle is now possible for employees with any Record Type. The system calculates associated DBAs and creates all reversing journal entries.

#### ***Additional flexibility during Paycheck Reconciliation***

---

##### **Selectively Reconcile Checks and Auto Deposits**

*SAR 5607629*

This new feature adds flexibility to the automatic paycheck reconciliation process. Through a new processing option, you can select to reconcile computer-generated checks, manual checks, auto deposits, or all three types.

### ***More easily administer 401K for employees who transfer companies***

---

#### **401K Balance Transfer**

*SAR 5856676*

When you have employees that move from one company to another, the payroll system allows you to easily change their company designation while maintaining prior company information. For employees who have contributed to a 401k plan, the employee transfer program now considers those balances. When an employee transfers from one company to another, you can now select to transfer their 401K balance to the new company.

### ***Simplify Canadian Payroll Tax Id Updates and processing of year-end tax forms***

---

#### **Update Tax Id to the Tax Ledger**

*SAR 6085295*

This tax id update program has been simplified; lengthy processing options have been replaced with data selection parameters. When you receive a new company tax id, use the processing option to indicate the new tax id and select the records to update through data selection parameters.

#### **New Laser Formats for Year End Processing**

*SAR 6232304*

Simplify your year-end process by incorporating new laser formats. This enhancement enables all Canadian year-end forms for laser printing.

## ***Distribution/Logistics***

### ***Inventory Management***

#### ***Updated displays increase ease-of-use with 15-character Lot Number***

---

Lot Number Display  
Increased to 15  
Characters  
*SAR 5412928*

Throughout Sales, Inventory, Manufacturing, and Distribution, Lot Number allows you to group like items together and to view collective information about items in a Lot. This enhancement increases the field size for Lot Number to 15 characters on all displays. This enhancement improves user interaction throughout the system and enhances ease-of-use when reviewing aspects of lot availability.

### ***Electronic Commerce***

#### ***Benefit from enhancements to EDI processing***

---

EDI Purchase Order  
Processing Updated  
*SAR 5833301*

The EDI Purchase Order Batch Entry program has been enhanced to mimic functionality available in Purchase Order Entry. Now, Purchase Orders received through the EDI process are verified and edited in the same way as those entered through Purchase Order Entry.

### ***Procurement***

#### ***Increase efficiency during Purchase Order Generation***

---

Zero Added as Valid  
Reorder Point  
*SAR 526387*

When the reorder point for an item is zero and availability is zero, the system was using item history to calculate reorder point. The user can now select to consider history, use zero as a valid reorder point, or skip reorder processing completely.

#### ***Take advantage of ILE RPG technology in Purchase Order Entry program***

---

Convert Purchase Order  
Entry to ILE RPG  
*SAR 5909758*

WorldSoftware™ has been enabling ILE RPG in various areas. With RPG III, it was no longer possible to compile the Purchase Order Entry program once it exceeded compiler size restrictions. With its conversion to ILE RPG, program size is no longer a restriction when modifying Purchase Order Entry.



## *Sales Order Management*

### ***Take advantage of ILE RPG technology in Sales Order Entry program***

---

Convert Sales Order  
Entry to ILE RPG  
*SAR 5909740*

WorldSoftware™ has been enabling ILE RPG in various areas. With RPG III, it was no longer possible to compile the Sales Order Entry program once it exceeded compiler size restrictions. With its conversion to ILE RPG, program size is no longer a restriction when modifying Sales Order Entry.

## ***Manufacturing***

### ***Requirements Planning***

#### ***Increase planning visibility and improve accuracy***

---

New Planning Messages  
– Defer and Increase or  
Decrease  
*SAR 5474555*

Material Planning processes aid a planner in avoiding inventory shortfall or surplus. Now, when you generate a material requirements plan, new planning messages give the planner increased visibility into recommendations. The messages “defer and increase” and “defer and decrease” improve accuracy in the planning process.

Treatment of Past-Due  
Purchase Orders in  
Available Balance  
*SAR 4878937*

To accurately plan for future inventory needs, you need accurate item supply and demand information. Now Supply and Demand Inquiry allows you to determine whether or not to include past-due purchase orders as supply quantity. If past-due purchase orders are considered likely to be received, you can select to include them in the Available balance; if past-due purchase orders are considered as likely supply, you can exclude them from the Available balance.

### ***Shop Floor Control***

#### ***Improve costing accuracy during Work Order Completion***

---

Work Order Completion  
*SAR 4491169*

This enhancement makes work order completion more fool-proof by checking to see if costs were associated with the item prior to allowing the work order to be completed. Preventing the completion of a work order without costs enforces costing accuracy and eliminates residual accounting issues.

## ***Technical Foundation***

### ***Take advantage of ILE RPG advancements***

---

SQL Program  
Debugging Enabled in  
RPG Creation Programs  
*SAR 5889911*

RPG creation programs have been enhanced to enable SQL program debugging using the ILE interactive debugger. Now, WorldSoftware™ programs that contain SQL statements are now available to the ILE interactive debugger.

Compile ILE programs  
with Source  
*SAR 5854911*

WorldSoftware™ object create programs J98CRTCL, J98CRTRPG, and J98CRTRPGL has been changed to allow the IBM source level interactive debugger to be used with WorldSoftware™ programs. Since these programs do not optimize objects, debugging information can be used by programmers.

SEU for ILE Copy  
Members  
*SAR 5918013*

You can now use the edit function to modify ILE copy members.

### ***Additional flexibility when using custom files in DREAM Writer***

---

DREAM Writer Now  
Retrieves File Format  
Name  
*SAR 5815049*

When creating your own custom DREAM Writer reports, you now have greater flexibility when using custom files and file record formats. DREAM Writer now locates the file that you specify in the Base on File field and retrieves the file record format.

NLH 2004 Capital Budget IC-30

**Attachment 2**

## Showcase

STRATEGY Essbase 6.5 offers significant improvements, including more flexibility for storage of detailed business information and additional scalability options.

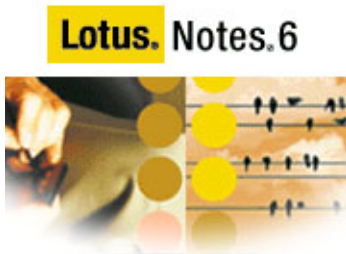
Essbase is a key component of the STRATEGY suite, providing in-depth insight into business conditions through pre-calculated multidimensional databases.

### **What's New in Essbase 6.5?**

- More efficient database maintenance. With the parallel calculations feature and the high concurrency kernel, companies using iSeries servers equipped with multiple processors can achieve faster turnaround on batch operations, such as re-calculating the cube.
- Essbase Integration Services (EIS). Companies can maintain consistency among multidimensional databases and combine them more easily, through the use of EIS. Once organizations have created OLAP structures, they can reuse them, in part or in their entirety, to build additional cubes for other applications. This reduces the time and expense required to create, deploy and manage business applications. In addition, Essbase Integration Services acts as a "bridge" between Essbase and detailed relational data.
- Hybrid analysis functionality. Business users can analyze relational data just as if it were loaded into an Essbase cube, thanks to hybrid analysis functionality. To take advantage of this feature, companies map data from relational databases to appropriate hierarchies in multidimensional Essbase cubes. Hybrid analysis saves companies time both in building and in re-calculating cubes, and delivers greater analytic capabilities. Please note: Hybrid analysis functionality requires licensing the new Essbase Integration Server

NLH 2004 Capital Budget IC-30

**Attachment 3**



**Level:** All  
**Works with:** Notes 6  
**Updated:** 01-Oct-2002

## Technical Overview

by [Craig Lordan](#)  
and [Dick McCarrick](#)

This article provides you with a technical overview of some of the new features and enhancements in Notes 6. When designing and developing Notes 6, we had a number of goals. Chief among them were to:

- Improve ease of use
- Remain the premier mail, calendar and scheduling, and task management client
- Strengthen replication and mobility features
- Continue to focus on collaboration
- Enhance performance
- Streamline deployment and administration

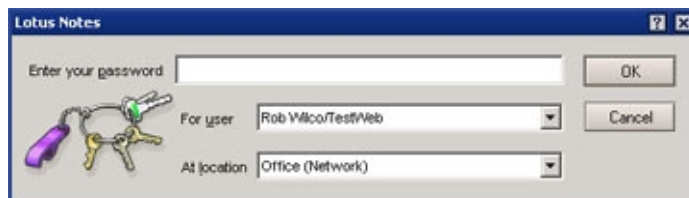
The following sections highlight some of the new features, enhancements, and changes that support these design goals.

### Ease of use

The following sections highlight some of the new features that contribute to improving Notes' ease of use.

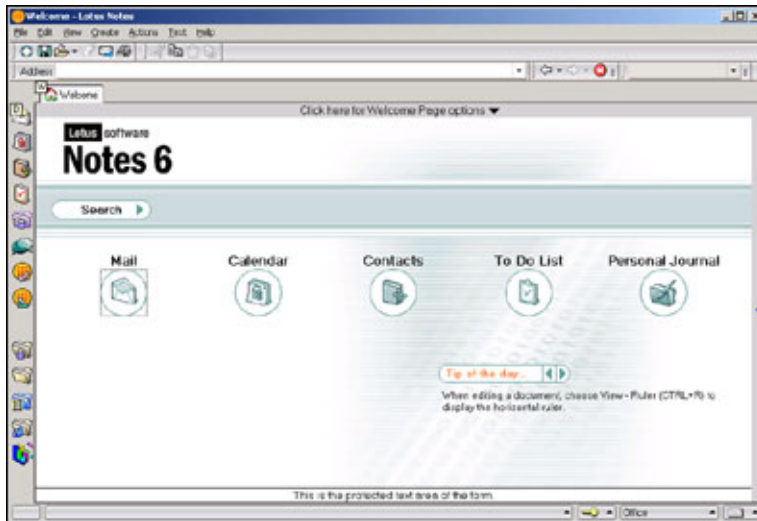
#### Login dialog box

With the new login dialog box, you can choose a different user ID and/or location before you enter your password (and the hieroglyphics have been replaced with keychain graphics):



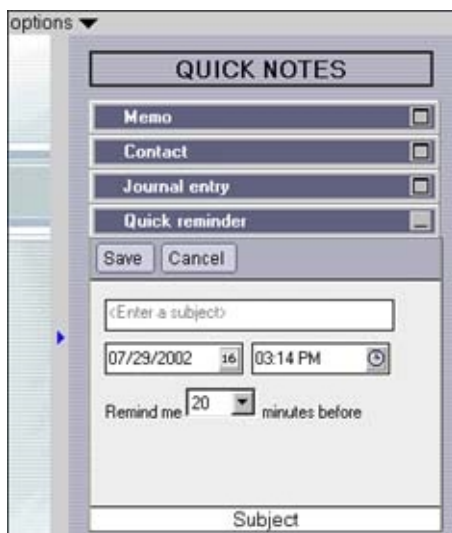
#### Welcome Page

Notes R5 introduced the Welcome Page, which provides instant, customizable access to the things that are most important to you—mail, calendar, to do list, Web pages, whatever you want. For Notes 6, the default Welcome Page is being redesigned to increase ease of use and make more of the features accessible to you. Here is the new look:



In addition, the Welcome Page has many new features, including:

- Enhanced Welcome Page options and a new wizard that make it even easier to customize and personalize your Welcome Page
- A Tip of the Day that shows handy information about using the Notes client
- Increased content types, such as Notes database views and access to directories on the file system
- On framed Welcome Pages, a "switcher" for dynamic switching of frame content, for example, switching from your Inbox to your calendar within the same frame
- Welcome Page action buttons, for example, to create a new mail memo or calendar entry
- A preview pane, similar to regular Notes databases
- The Launch Pad, for quick access to applications, everyday tasks, Notes links, and Web links.
- Quick Notes, on the right-hand side of the screen, which allow you to create mail, contacts, journal entries, and reminders without having to open the respective databases, as shown below:



### Bookmarks

Bookmarks, used for navigation and organization, now include two new folders: a Startup folder and a History folder.

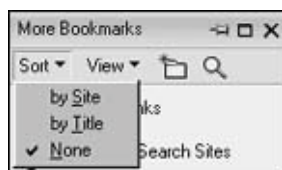
The Startup folder is created automatically and appears in the More Bookmarks folder. It allows you to bookmark things—databases, Web pages, other programs—that you want to launch when you start Notes. For Notes databases, this means that Notes will open a window tab; but to help with performance, Notes doesn't actually open the item until you click the window tab.



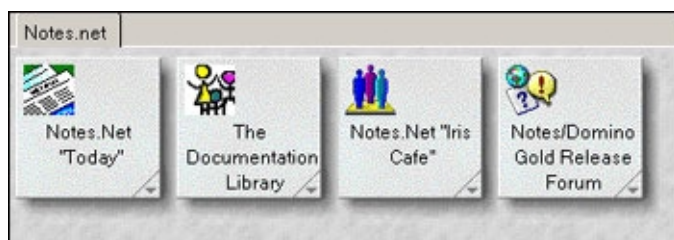
The History folder shows you all the documents, views, databases, Web pages—anything that you have opened in your client—both today and during the last seven days.

Bookmarks now fully support drag-and-drop, and you can bookmark items from the file system, such as Lotus Freelance Graphics files, Microsoft Word documents, even system folders. Plus, you can also use the Ctrl key (or the Command key if you're using a Macintosh) to select and manipulate multiple bookmark items at once; for example, you can select and open three databases at the same time.

In each Bookmark folder, you can sort your bookmarks by site or by title, and the view choices (icon size, unread count, server names, and so on) have been moved into their own View menu. Plus, you now have icons to create new bookmark folders and to search the bookmark folder (or you can press Ctrl-F to search).



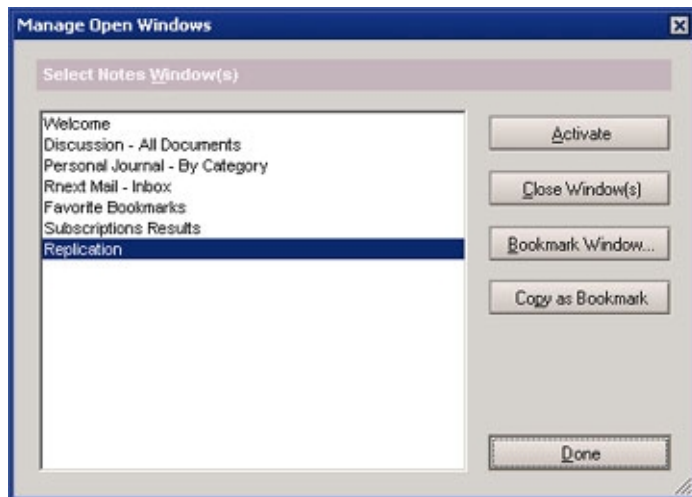
Also, you can show each bookmark folder in the new Bookmarks Workspace. To display the Bookmarks Workspace, choose Display as Workspace from the View menu or click the grid icon (in between the push pin and the "x"). To revert to the slideout, click the grid icon again or right-click the Workspace and choose Display as Slideout.



### Windows tabs and menu

Notes 5 added the new window tabs across the top of the screen, giving you access to all your open windows in Notes. In Notes 6, you can use your mouse to click, hold, and drag to reorder these tabs as you want.

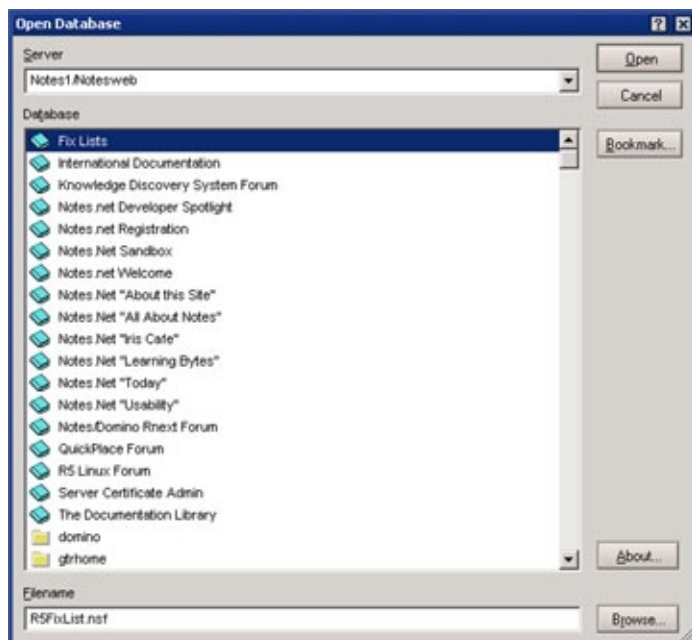
The new, optional Windows menu recalls a feature from Notes Release 4. The Notes 6 Windows menu improves accessibility, allows you to manage all your open windows, and provides a choice to display a dialog box to manage and bookmark your open windows, as shown below. (You can decide whether or not to display the Windows menu by setting your User Preferences.)



Also, if you have multiple Notes windows open (such as Notes Help, or by right-clicking a window tab and choosing Open in New Window) you can use the Windows menu to cascade or tile your open windows.

### Resizable dialog boxes

The Windows menu dialog box is just one example of the many dialog boxes in Notes 6 that are resizable. Here's the Open Database dialog box, resized to be a bit longer and wider than the default:



Note that dialog boxes you resize will remain that size when you later reopen them.

### Editing documents

The following are some examples of the improved ease-of-use of Notes 6 while you are editing documents.

Several improvements concern editing and manipulating tables. First, you can now choose the new Table Properties option Size to Fit to resize a table column, so the column width accommodates the contents of the column. Second, the Table - Select Table commands allow you to quickly select the rows, columns, cells, or the entire table for cutting or copying. Third, you can quickly reorder table cell contents by placing your cursor anywhere in the cell, pressing and holding down the Ctrl key, and then moving the cell contents with the up and down arrow keys.

The next editing improvement also involves the same Ctrl-arrow keystroke, but this time outside of a table. You can use Ctrl key with the up and down arrows to reorder items in a list, such as a numbered or bulleted list.

Plus, you can edit attachments "in place." The Attachments Properties box now includes an Edit button. This lets you open the attachment in edit mode and modify it, without having to detach and save it first.

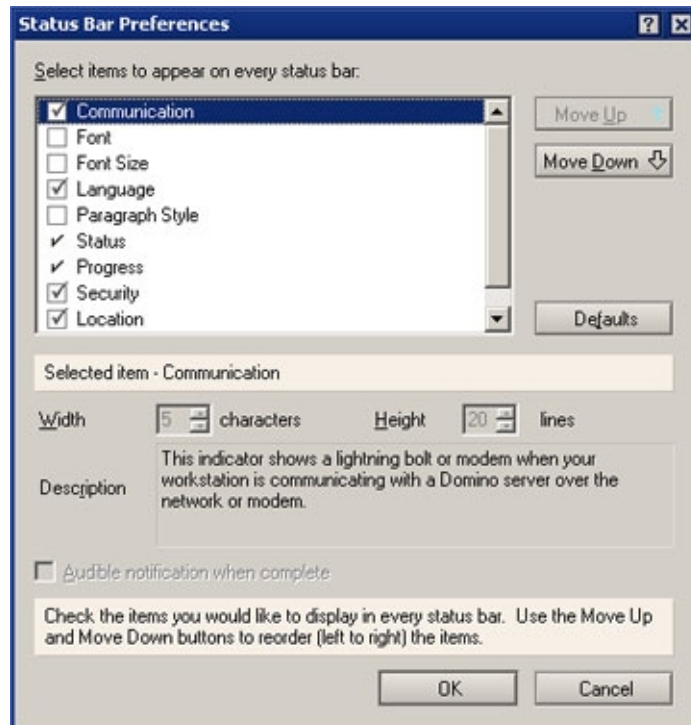
Also, you can also use a new option in Text Properties (or the new, optional Language status bar menu) to mark text in your document as using a specific language. One example of how Notes uses this information is during spell checking; it will use the appropriate dictionary (if it is installed) for the marked language.

### Toolbars

Notes now includes toolbars. These new toolbars provide the same quick access to features, options, and commands as did SmartIcons, but provide many new features as well. You can easily drag-and-drop your toolbars to almost any location on your Notes window, including having them "float" on their own. You can show or hide certain toolbars or access toolbar preferences, by right-clicking any toolbar. You can choose the size of your toolbar buttons and whether they should have icons, text, or both. And you can create new toolbars or customize existing ones. Plus your existing custom SmartIcons will be converted when you upgrade.

### Status bar

You now have the option to customize the status bar (the set of items at the bottom of the Notes window) using the new Status Bar Preferences:



Using this new Preferences menu option, you can select the items that appear in the status bar, their placement, and their size (either width or height, depending on the item).

The new Progress indicator on the status bar appears as needed to show you tasks that Notes is performing in the background such as saving attachments, replacing a database's design, or replicating databases. You can click the Progress indicator to show the status of all these activities if more than one thing is happening at once.

### Logout screen

Notes already allows you to lock your user ID by pressing F5 or by setting a period of inactivity. Notes 6 adds a Logout screen that appears when your user ID is locked. From the Logout screen, you need to press Enter, which displays the login dialog box, and type your password in order to continue using Notes. Here's how the default

Logout screen looks. (You can customize the logout screen so it uses a different graphic.)

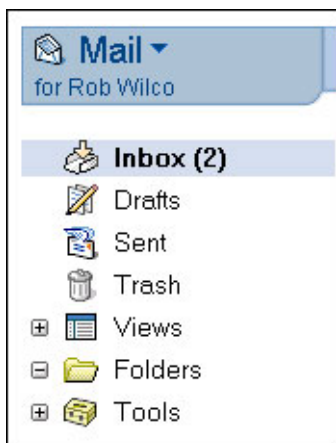


## Mail, Calendar and Scheduling, and To Do

Mail, Calendar and Scheduling, and To Do all include new features and enhancements.

### Mail

Mail has been enhanced with several new useful features. For example, Notes 6 adds unread marks to folders. If you move or file messages to folders, you can now see how many unread messages you have in those folders. In the Release Candidate, the folders appear in bold text along with the number of unread messages, as shown in the example below:



Your Inbox can now be easily customized. For example, you can reorder and sort the columns as well as move the frames and preview pane borders, and your changes are saved so that they appear that way every time you open your mail database. (This feature actually applies to all databases, not just mail.)

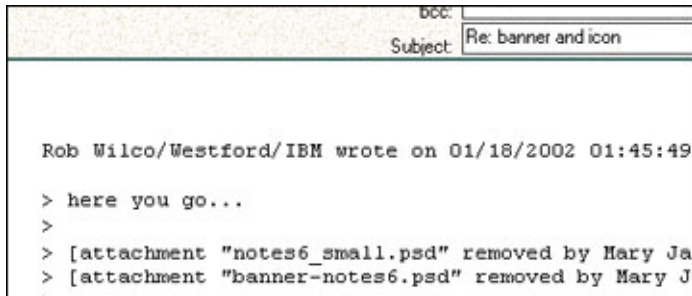
And you can now choose different color schemes, by sender, to differentiate mail messages in views and folders. You can choose both the background and text color, for example, the message below is highlighted with a light blue background and dark blue text:

installation/use			
NotesNetAnnounce	05/03/2001	6,017	Notes.net: Iris Today May 2001

Another useful view change is the new mail-checking user preference, Auto Inbox Refresh. With this enabled, when Notes checks for new mail, it will also refresh the Inbox automatically, so you no longer need to press F9 or

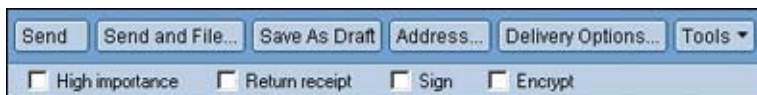
click the refresh icon to see your new messages.

When creating a reply to a message or forwarding a message, you now have new features: Reply without Attachment(s) and Forward without Attachment(s) remove attachments and other large objects, such as images, and annotate the removal. Reply with Internet-Style History and Internet-Style Forward also remove and annotate attachments and objects, plus you can use a prefix of your choice to indicate a previous message, for example:



You can set your Internet-style reply/forward character and line wrapping on the Internet tab in User Preferences. Notes uses the familiar right angle bracket character by default.

The mail message form now includes checkboxes that let you select the High importance, Return receipt, Sign, and Encrypt options, without having to open the Delivery Options dialog box.



Notes 6 includes further enhancements to file attachments within mail. In release 5.0.1, you could create attachments by dragging and dropping them from the file system into a new mail message. Notes 6 allows you to drag-and-drop files to the file system to detach them. And when you choose to save an attachment, Notes now shows a progress bar (because saving attachments takes advantage of Notes' new multitasking capabilities—more on that in the Performance section that follows).

In addition, the Attachments menu, properties box, and right-mouse menu have been updated so that they are easier to use. The Launch and Detach options have been renamed to the more obvious Open and Save, respectively. There are also new options: Edit, Save and Delete, Delete, Save All, Save and Delete All, and Delete All.

### Calendar and Scheduling

Calendar and Scheduling in Notes 6 includes many useful improvements and changes. For example, the calendar screen now includes a "mini-view" that displays all entries that require your action, in one single location.



Also, the calendar entry form has been redesigned so that it includes more tools on one form. The Scheduler is now a collapsible section on the form so that you can easily see the availability of all invitees. Other additions to the form include Sametime online meetings. Once you have created a resource in the Resource database using the new Sametime Online Meeting resource type, you can schedule a Sametime online meeting and book that reservation in the Sametime meeting server. If there are changes to the meeting, the Sametime meeting server is notified.

Here is a look at the form itself:

The screenshot shows the 'New Calendar Entry' form for Bruce Wayne. The form has a tabbed interface with tabs for 'Welcome', 'Workspace', 'Bruce Wayne - Calendar', and 'New Calendar Entry for Bruce...'. The 'New Calendar Entry' tab is active, showing a 'Meeting' entry. The form includes fields for 'Subject' (Lotus Notes updates), 'Chair' (Bruce Wayne/NEI), 'When' (Starts Fri 07/26/2002 01:00 PM, Ends Fri 07/26/2002 02:00 PM, 1 hour), 'Where' (Location: Board Room, Rooms, Resources, Online), 'Invitees' (Required (to): Alfred Pennyworth, Richard Grayson; Optional (cc); Fm (bcc)), 'Categorize' (Projects), 'Scheduler' (Click to see invitee, room and resource availability), and 'Description' (Click to append attachments). The form also has buttons for 'Save and Send Invitations', 'Save as Draft', 'Find Room or Resource', and 'Delivery Options...'. There are checkboxes for 'Notify me', 'Mark Private', and 'Pencil In'.

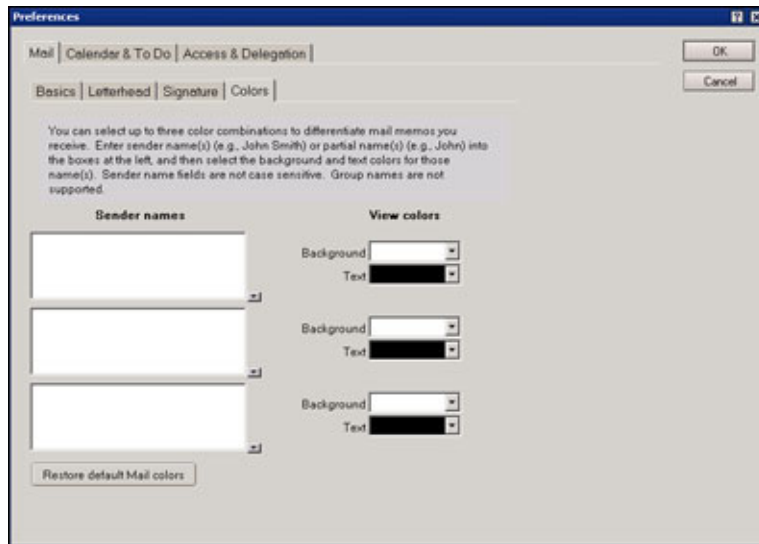
The Calendar views are now presented in a tabbed format to make it easier to switch from daily, weekly, and monthly calendars. In Notes 5, we introduced the concept of a work week, where a user can define any of seven days, not necessarily contiguously (for example, Monday, Wednesday, Friday, and Saturday). We have extended that concept to include a two work week and a work month view in Notes 6. Also, any view can be shown in a summarized format that will show you your calendar entries in a concise, columnar arrangement.

If you want to create an appointment (or change the subject of an existing one), the Notes 6 calendar now gives you the option to create or edit entries right from the view level without having to open the document. For example,



you just click and type to create a new appointment or edit an existing one. Or, you can change the start and end times of a meeting by dragging the entry box. You can drag-and-drop entries into a different time slot or day. When performing these operations, if you are the chairperson, a reschedule dialog box will appear so that you can notify your attendees. If you are an invitee, a new dialog box will appear. These save time because the entries do not need to be opened to perform these operations. Notes application developers can apply these view-level editing capabilities to all databases; these capabilities are not limited to just the calendar.

In gridded views, such as the one-day, two-day, or work week view, calendar entry conflicts appear side-by-side rather than one on top of the other as in previous releases. Also, all calendar entries in views are now color-coded, so you can tell a meeting from an appointment or a reminder right from the view. Plus, you can choose the color scheme (both the background and text colors) yourself in the calendar preferences:



Time zone support has been improved so that you can choose a different time zone when you pick the start and end times for meetings. You can also schedule meetings that run past midnight, and show two time zones in certain views, such as the day views.

Calendar delegation has been improved, allowing a person to assign full calendar management to someone else. For example, assume you manage Al Zollar's calendar. You can create meeting invitations for him, and notification of all the meeting replies, including a doclink back to the reply, can be returned to you as the calendar manager. Or, as calendar manager, you will receive an email with a doclink to a calendar invitation in the Executive's mail file; when you click on that doclink, you are taken to the calendar invitation and can act on it on Al's behalf. You can also set up a shortcut to easily open Al's calendar from your own calendar so that you can see his calendar view, including the mini-view. This means you can manage Al's calendar without checking his mail database for replies or invites, and he can simply use his calendar to see all his appointments.

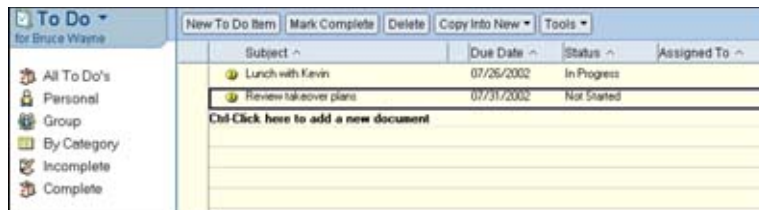
Further calendar and scheduling features include:

- iCalendar (Internet-standard calendaring and scheduling) for Notes-to-Notes scheduling over SMTP
- vCard (electronic business card) import
- Several new day, week, and month views
- Many new printing options, including the ability to print to a Notes document
- New formatting options for views: Summarize (for all views) and Show Time Slots (for week and month views)
- Clickable month and year in the date chooser, so you can quickly change either the month, the year, or both
- A scroll bar at the bottom of the screen to quickly move to other dates in the view you're in

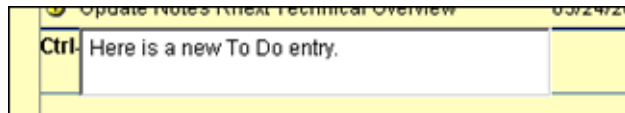
For more details on using Calendar and Scheduling, see the *LDD Today* article "[Saving time with Notes 6 Calendar and Scheduling](#)."

### To Do

The new To Do views show off a new design attribute of views in Notes 6: the ability to show grid lines of different styles and colors. In To Do, grid lines are applied to create a "ruled paper" look:

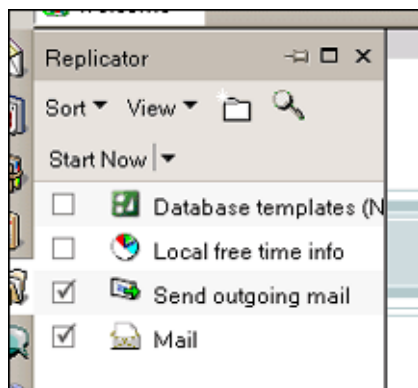


To Do views offer in-line editing. This lets you create or edit To Do entries at the view level:



## Replication and mobility

The Replicator page in Notes 6 is another area where you will see ease of use changes and improvements. The first thing you will notice is that the layout has been reworked. For example, you can choose large or small icons, and you can also display the page as a bookmark-page style "slide-out," as shown below:

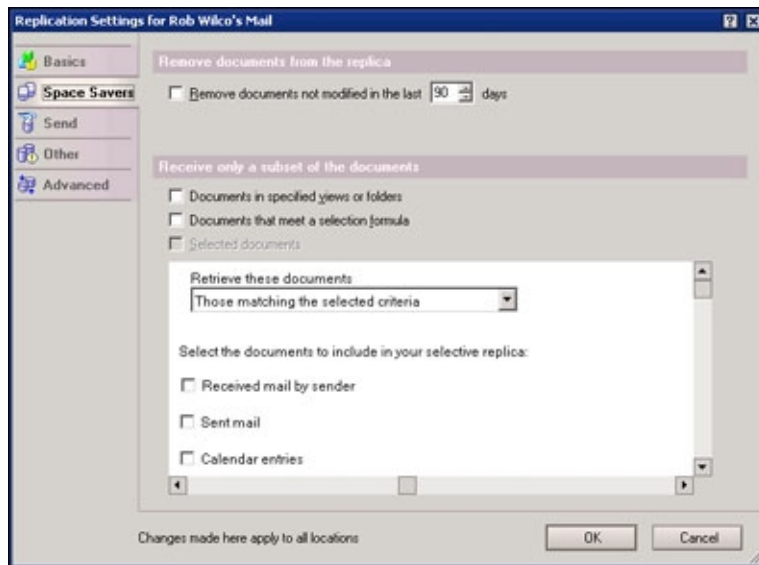


You can easily create replicas (and selective replicas) by dragging and dropping databases, views, or documents onto the Replicator page. For example, if you drag your Inbox in your mail database to the Replicator page, you can create a selective replica containing only the documents that appear in your Inbox—no replication formula required!

The enhanced Replicator page also allows you to organize database icons into folders, which then allows you to perform replication activities on everything in one folder. Plus, you can sort the Replicator page columns and select multiple icons on the page. In addition, the new progress meter shows more information about databases and documents.

You will also notice changes, enhancements, and additions to the Replication Settings dialog box. For instance, you can access your replication schedules on the Basics tab. Another example is the new selective replica options available on the Space Savers tab for certain databases such as mail, where you can create selective replication forms to more easily select the documents that you want to replicate. We provide a selective replication form in the Notes 6 mail template that allows you to create a replica based on sender, sent mail, draft mail, calendar entries, and so on:





As for replication, a major enhancement is the way replication of documents within databases is handled. For example, documents are re-ordered so that smaller documents are replicated first. Then, views are built dynamically, so as documents are replicated they appear in the view. Both of these enhancements mean that you can act on information more quickly.

For mobility improvements, Notes 6 includes multi-user support. Multi-user features allow multiple people to easily share one specific Windows OS PC in a way that ensures secure access to personal data as well as common information.

## Collaboration

A powerful new collaboration tool in Notes 6 is the ability to lock and unlock documents. When this feature is enabled on a database, users with at least Author access can lock documents on any replica, preventing others with the same access from modifying the document, even if they are working on a different replica. Even managers of a database cannot edit a locked document (although they can unlock documents). Database designers can enable this feature in the Database properties box.

## Performance

The most noticeable performance improvement for Notes 6 is that many features are now "multitasking," which means you can do something else while the Notes client is busy performing an operation in the background. Activities such as polling for new mail, detaching files, replicating, printing, monitoring alarms, subscription processing, running background agents, replacing designs, and copying databases take advantage of the new Notes 6 multitasking abilities.

Other Notes 6 client performance improvements include:

- Reduced use of both memory and graphics objects
- An improved compression algorithm of which Notes network data (NRPC) can now take advantage
- More end-user control concerning selective replication and management of file attachments
- Increased file detachment speed

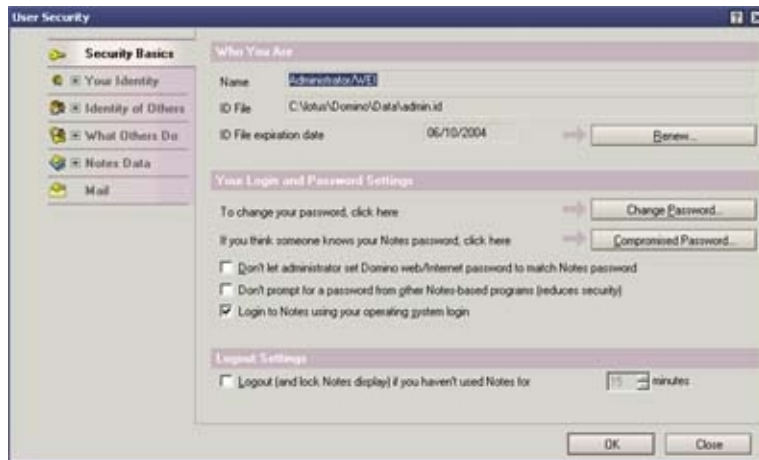
## Administration

At the beginning of this overview we discussed changes to the Welcome Page. For administrators, customizing and deploying an organizational Welcome Page is even easier with the availability of the new Welcome Page deployment process, which incorporates the new administration desktop policy features. You can design a Welcome Page database, push it out to users, and even lock it down. For more information on Welcome Page Deployment, read the [Domino Administrator 6 Help](#).

In general, beyond just the Welcome Page, the new policy documents will be a useful tool for Notes client administrators because they are designed to let you enforce standard settings and configurations across groups, departments, or even entire organizations.

Administrators can control and maintain version deployment by setting up the new Smart Upgrade feature, which stores Notes client upgrade files on a Domino server. When users connect to their Domino 6 home server with their Notes 6 client, they are automatically prompted to upgrade to the new version of Notes. If they click OK, the new software is downloaded from the server and the client is shutdown, upgraded, and restarted automatically.

Users now have streamlined administration of the security of the Notes client with the new User Security dialog box, which consolidates the important security preferences and options. You can use the dialog box to manage your Notes ID and password, Notes and Internet certificates, execution control list, encryption of documents, mail, local databases, and so on. You can read more about the User Security dialog box in the *LDD Today* article ["Bonding with User Security in Notes 6."](#)



For more on Notes/Domino administration, we suggest reading the [Domino 6 Technical Overview](#).

NLH 2004 Capital Budget IC-30

**Attachment 4**

IBM

## OS/400 Release support

### Understand the importance of staying on supported OS/400 releases

With the high quality and reliability of OS/400 software releases, OS/400 users may not recognize the importance of periodically upgrading in order to stay on a supported release. Every release of OS/400 has a finite support period, with the end date announced either with the initial announcement of the release or twelve months prior to becoming effective. After the end of the program support period, IBM will no longer accept any problems for analysis.

There is another aspect of remaining on a current release which may be less evident, but may be even more important to many users. Once a release has reached its end of program support, it will generally not be able to upgrade directly to any releases which are subsequently announced. If a release cannot upgrade directly to a new release, the user will need to do a multiple step upgrade, that is upgrade to an interim release just to be able to upgrade to the latest release.

### Don't let this happen to you!

The most important scenario to avoid is remaining on a release so long that all subsequent releases which supported a single step upgrade are withdrawn from marketing. Once that happens, there is no supported way for the user to upgrade their system. In most cases users would then need to hire custom services to perform a potentially labor intensive upgrade from the back-level release to a current one.

### Information table

The table below provides information on which releases any given release can upgrade to. To use the table, locate the release the user is currently operating on in the left column. Move horizontally to find the releases which could be directly upgraded to in a single step. A dash in the box indicates that direct upgrades to the release indicated in the column heading are not supported. A date (or "withdrawal date to be announced") in the box indicates that a single step upgrade to the release indicated in the column heading is available, up until the indicated date. On the indicated date the target release is being or was withdrawn from marketing, and would no longer be available. If all dates in the row are already passed, it indicates that there no longer is a supported means to upgrade from that release. Older releases which are not listed no longer have upgrade paths available.

From OS/400	End of Support	Upgrade to V4R1	Upgrade to V4R2	Upgrade to V4R3	Upgrade to V4R4	Upgrade to V4R5	Upgrade to V5R1	Upgrade to V5R2
V3R2	05/31/00	02/25/00	02/25/00	12/29/00	05/31/01	07/02/02	-	-
V4R1	05/31/00	-	02/25/00	12/29/00	05/31/01	07/02/02	-	-
V4R2	05/31/00	-	-	12/29/00	05/31/01	07/02/02	-	-
V4R3	01/31/01	-	-	-	05/31/01	07/02/02	-	-
V4R4	05/31/01	-	-	-	-	07/02/02	Withdrawal date to be announced	-
V4R5	12/31/02	-	-	-	-	-	Withdrawal date to be announced	Withdrawal date to be announced
V5R1	05/31/03 <sup>1</sup>	-	-	-	-	-	-	Withdrawal date to be announced
V5R2	09/30/04 <sup>2</sup>	-	-	-	-	-	-	-

<sup>1</sup> Customers with an iSeries Software Maintenance Agreement or current Support Line contract are entitled to extended support for V5R1 until 05/31/04 at no additional charge.

## IBM

<sup>2</sup> Customers with an iSeries Software Maintenance Agreement or current Support Line contract are entitled to extended support for V5R2 until 09/30/05 at no additional charge.

**V5R2 Planning Statements**

Planning statements provide insight into IBM's plans and directions. This information represents current goals and objectives and is subject to change or withdrawal without notice.

- **NetVista Thin Client Support, February 2003**

For existing OS/400 customers with IBM NetVista thin clients, V5R2 is the final release in which NetVista Thin Client Manager V2R1 will be supported. Current Program Service End Date for Thin Client Manager V2R1 is December 31, 2003.

- **Access Class Libraries, June 2002**

IBM plans for V5R2 to be the final release to support the Access Class Libraries in OS/400. The Access Class Libraries are C++ classes that provide access to OS/400 resources, including DB2 UDB for iSeries.

Suggested Replacements:

IBM suggests the current users of the Access Class Libraries use appropriate 'C' language APIs to access OS/400 resources. Current users should also consider using Java and the corresponding IBM Toolbox for Java interfaces to access OS/400 resources.

- **Application Development Manager and Application Dictionary Services, June 2002**

There are two priced features in WebSphere Development Studio for iSeries, Application Development Manager (ADM) and Application Dictionary Services (ADS). IBM is planning to discontinue marketing these products in the release after V5R2.

IBM intends to discontinue marketing ADM and ADS. This should not be construed as a lack of interest in Source Control/Library Control and Impact Analysis. The importance of source-control management and impact analysis has increased greatly in the last several years since the introduction of the Integrated Language Environment to promote modular programming and to encourage code reuse. In recent years, the introduction of Web and Java development and the IBM WebFacing Tool have also dramatically increased the number of Java components that have to be managed. The need for library control systems and impact analysis tools has become even more important.

The IBM decision to discontinue marketing ADM and ADS is based on the following reasons:

- ADM and ADS do not support C++ and Java.
- ADM and ADS support the native file system only. All Java and most C++ program source is stored on the Integrated File System (IFS).
- There are strong non-IBM competitive Source/Library Control and Impact Analysis products that provide Java, C++ and IFS support in the iSeries marketplace.
- IBM would have to make substantial investments in ADM and ADS to make these products functionally comparable/competitive to the vendor products. Just making ADM and ADS competitive with the dominant vendor products would not substantially increase the value of ADM and ADS in the iSeries market.

IBM is currently working with the key iSeries partners to provide competitive non-IBM products to replace ADM and ADS. The vendors have agreed to:

- Integrate their tools to the WebSphere Studio Workbench
- Support Java and C++ and IFS

## IBM

- Provide a migration plan for ADM and ADS customers to migrate to their solutions

For more information, see the white paper ["A Case for Source Control Management"](#)

- **Asynchronous Transfer Mode, June 2002**

IBM plans for V5R2 to be the final release to support the Asynchronous Transfer Mode (ATM) networking technology and ATM adapters:

- #2811 PCI 25 Mbps UTP ATM
- #2812 PCI 45 Mbps Coax T3/DS3 ATM
- #2815 PCI 155 Mbps UTP OC3 ATM
- #2816 PCI 155 Mbps MMF ATM
- #2817 PCI 155 Mbps MMF ATM
- #2818 PCI 155 Mbps SMF OC3 ATM
- #2819 PCI 34 Mbps Coax E3 ATM
- #4815 PCI 155 Mbps UTP OC3 ATM
- #4816 PCI 155 Mbps MMF ATM
- #4818 PCI 155 Mbps SMF OC3 ATM

Suggested Replacements: Gigabit Ethernet (FC 2743 and FC 2760) or 10/100 Fast Ethernet (FC 2838 or FC 2849) are recommended replacements, with required infrastructure changes (switches, routers etc.) to the network as applicable. Gigabit Ethernet supports TCP/IP only and so SNA Traffic would require using ANYNET as SNA over TCP/IP. 10/100 Fast Ethernet supports both SNA and TCP/IP. Although the Fast Ethernet adapter is limited to UTP cable, an external transceiver may be used to convert to multimode fiber (compatible with ATM fiber).

Server Model	ATM with SNA	ATM with TCP/IP
6xx, Sxx, 7xx, 250	2838	2838
270, 8xx	2849	2743, 2760

- **Distributed Computing Environment (DCE), June 2002**

IBM plans for V5R2 to be the final release to support Distributed Computing Environment Base Services for AS/400 (5769-DC1) and Distributed Computing Environment Data Encryption Standard Library Routines for AS/400 (5769-DC3).

Suggested Replacements:

IBM recommends that customers build their distributed applications using the functions provided by MQ Series, IBM Toolbox for Java, WebSphere Application Server, or Lotus Domino technologies for iSeries.

**IBM HTTP Server, June 2002**

IBM plans for V5R2 to be the final release to support HTTP Server (original). IBM HTTP Server for iSeries includes the generally available version of the Apache Software Foundation's Apache 2.0 Web server released April 5, 2002. IBM HTTP Server (powered by Apache) is the recommended solution for your Web serving needs. IBM plans for the HTTP Server (original) to be removed from IBM HTTP Server for iSeries in a future release. For more information, including migrating HTTP Server (original) configurations to HTTP Server (powered by Apache), visit: [www.ibm.com/eserver/iseries/software/http/](http://www.ibm.com/eserver/iseries/software/http/)

- **Integrated xSeries Server, June 2002**

IBM plans for V5R2 to be the final release to support the Windows NT 4.0 operating system on the Integrated xSeries Server.

IBM

- **iSeries Access, June 2002 (Updated May 2003):**

IBM plans to remove the support of the Windows 98 and Windows Me operating systems from the iSeries Access for Windows client. iSeries Access for Windows on Windows 98 and Me will continue to be supported in V5R2, but not in subsequent releases. In subsequent releases, iSeries Access for Windows will not install on Windows 95, 98, or Me operating systems.

The removal of Windows 98 and Windows Me applies to all of the functions shipped with iSeries Access for Windows, including EZ-Setup, iSeries Navigator, Management Central, and Operations Console.

iSeries Access for Windows will continue to be supported on the Windows NT 4.0, Windows 2000, Windows XP, and Windows Server 2003 operating systems.

In addition, the following function in iSeries Access for Windows will continue to be supported in V5R2 but will be removed in subsequent releases:

- Migration from Client Access for Windows 95/NT and Client Access Enhanced for Windows 3.1 to iSeries Access for Windows.

- **iSeries Support for Windows Network Neighborhood (iSeries NetServer), June 2002 (Updated May 2003):**

IBM plans to remove the support of the Windows 98 and Windows Me operating systems from iSeries NetServer. Windows 98 and Me continue to be supported in V5R2, but not in subsequent releases.

iSeries NetServer will continue to support the Windows NT 4.0, Windows 2000, Windows XP, Windows Server 2003, and Linux (running Samba) operating systems.

- **Open Class Library, June 2002**

IBM intends for V5R2 to be the final release to ship the Open Class Library, part of WebSphere Development Studio for iSeries and OS/400. Documentation to assist in migrating from IBM Open Class to the C++ Standard Library can be found at [iSeries Upgrade Planning](#)

Suggested Replacements:

All applications that use the Open Class Headers and Service Programs need to be refreshed using the C++ Standard Library provided with 5722-WDS and 5722-SS1.

When discontinued, IBM Open Class Headers shipped in library QSYSINC with a descriptive text of "IOC HEADER" and the IBM Open Class Service Programs, QYPPOC370 and QYPPOC510, shipped in library QSYS will be removed.

To assist migration from IBM Open Class to the C++ Standard Library, refer to: [icomigrwp.pdf](#)

- **OS/400 Support of Selected AS/400 Models, June 2002**

IBM plans for OS/400 V5R2 to be the final release supported on AS/400 Models 150, 600, 620, 640, 650, S10, S20, S30, S40, and SB1.

- **PCI Integrated Analog Modem, June 2002**

IBM plans for V5R2 to be the final release to support the #2761 and #4761 PCI Integrated Analog Modem adapters for fax functions. IBM previously announced that V5R1 was the final OS/400 release to support the use of the #2761 and #4761 PCI Integrated Analog Modem adapters for non-fax functions.

Suggested Replacements: Replace with #2805 or #2806 (Australia / New Zealand) PCI Quad Modem IOA.

## IBM

- **S/36 and S/38 Migration, June 2002**

IBM plans for V5R2 to be the final release to support:

- OS/400 Option 4 -- S/36 and S/38 Migration
- OS/400 Option 11 -- S/36 Migration Assistant
- RSTS36FLR command within OS/400 used to restore S/36 folders

- **Ultimedia System Facility (USF), Updated March 2003**

IBM plans for V5R2 to be the final release for the Ultimedia System Facility (USF) APIs to be shipped or supported with iSeries Access for Windows and OS/400 Option 16.

Suggested Replacements:

Customers have chosen to develop multimedia applications using more standard means such as DB2 UDB for iSeries Binary Large Object (BLOB) support or the Integrated File System.

- **XML Parsers, June 2002**

IBM plans for V5R2 to be the final release to ship the XML for C++ and procedural parsers as part of OS/400. These parsers are service programs QXML4C310 and QXML4PR310 in library QSYS. Comparable XML for C++ and procedural parsers are now available via LPO 5733-XT1 (XML Toolkit for iSeries).

Suggested Replacements: Replace with LPO 5733-XT1, XML Toolkit for iSeries, which allows the timely delivery of the latest in XML parser technology.