



Rate Mitigation Options and Impacts Review

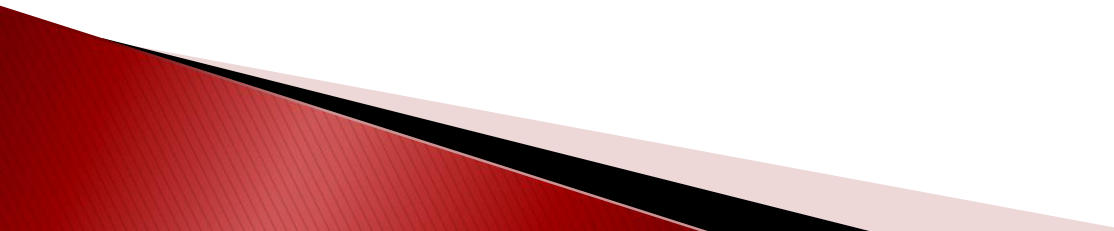
Opening Remarks

Introductions:

Jabez Lane, Business Manager

Duane Warren, President

Liberty's Report

- ▶ Transfer of assets to NF Power
 - ▶ Consolidation of Power Supply & NL Hydro
 - ▶ Efficiencies within Nalcor
 - ▶ Exploits Generation
- 

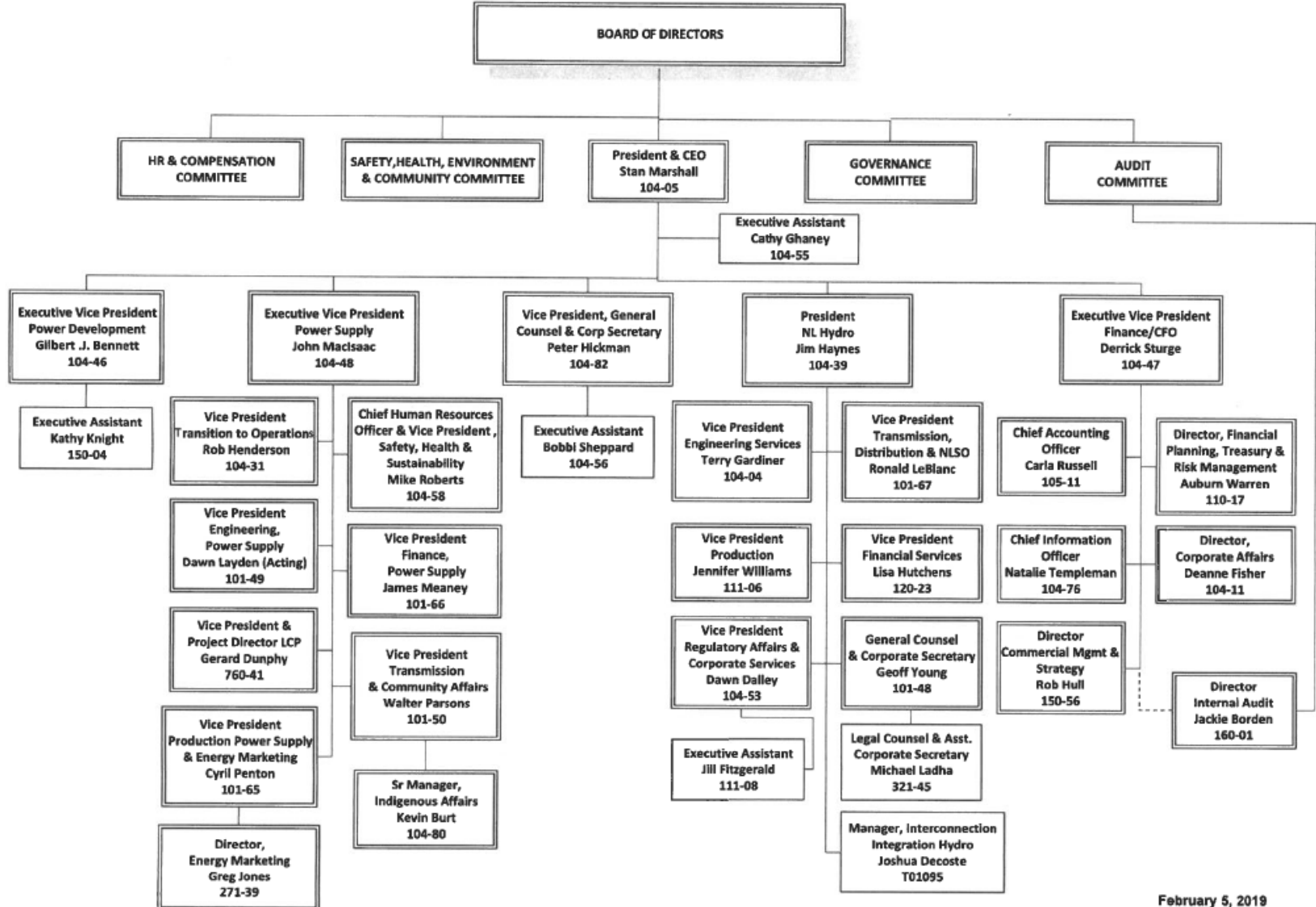
Transfer of Assets to NF Power

- ▶ IBEW Local 1615 agrees with Liberty on the issue of not transferring assets to NF Power

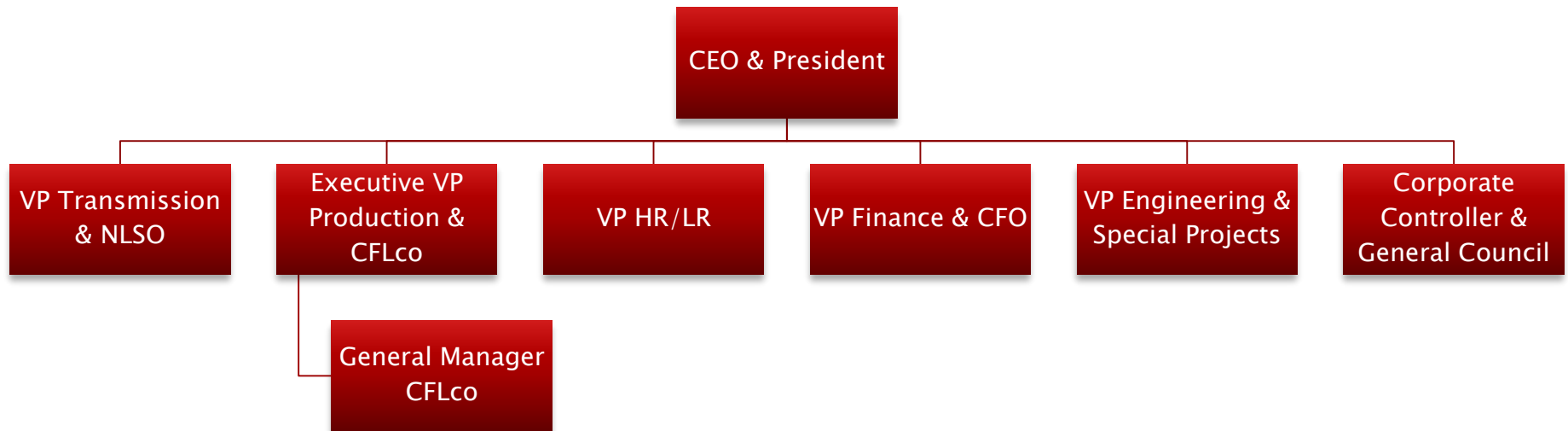
Consolidation of Power Supply & NL Hydro

- ▶ IBEW Local 1615 agrees with Liberty on the recommendation of consolidation

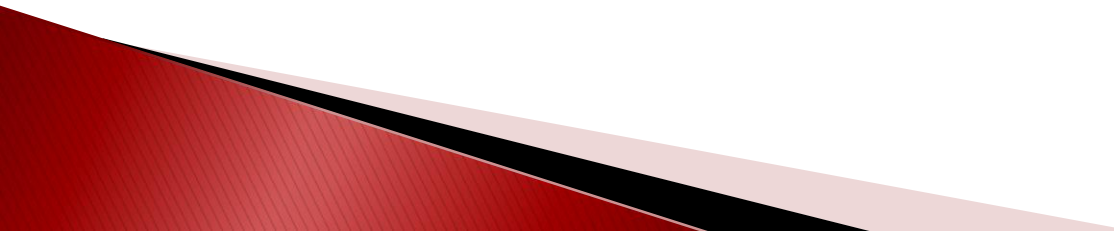
Executive Vice-Presidents & Direct Reports



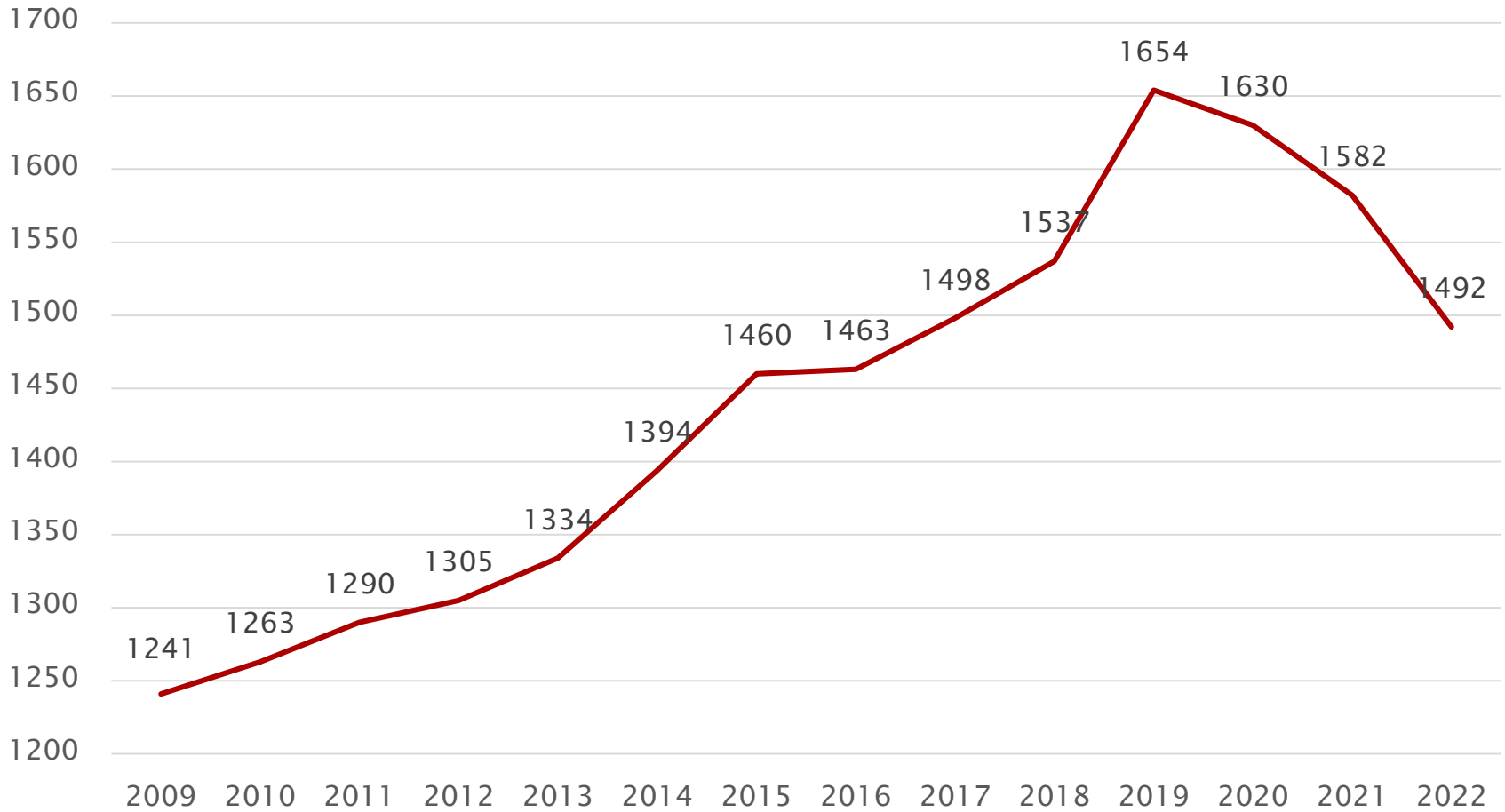
Hydro Group of Companies



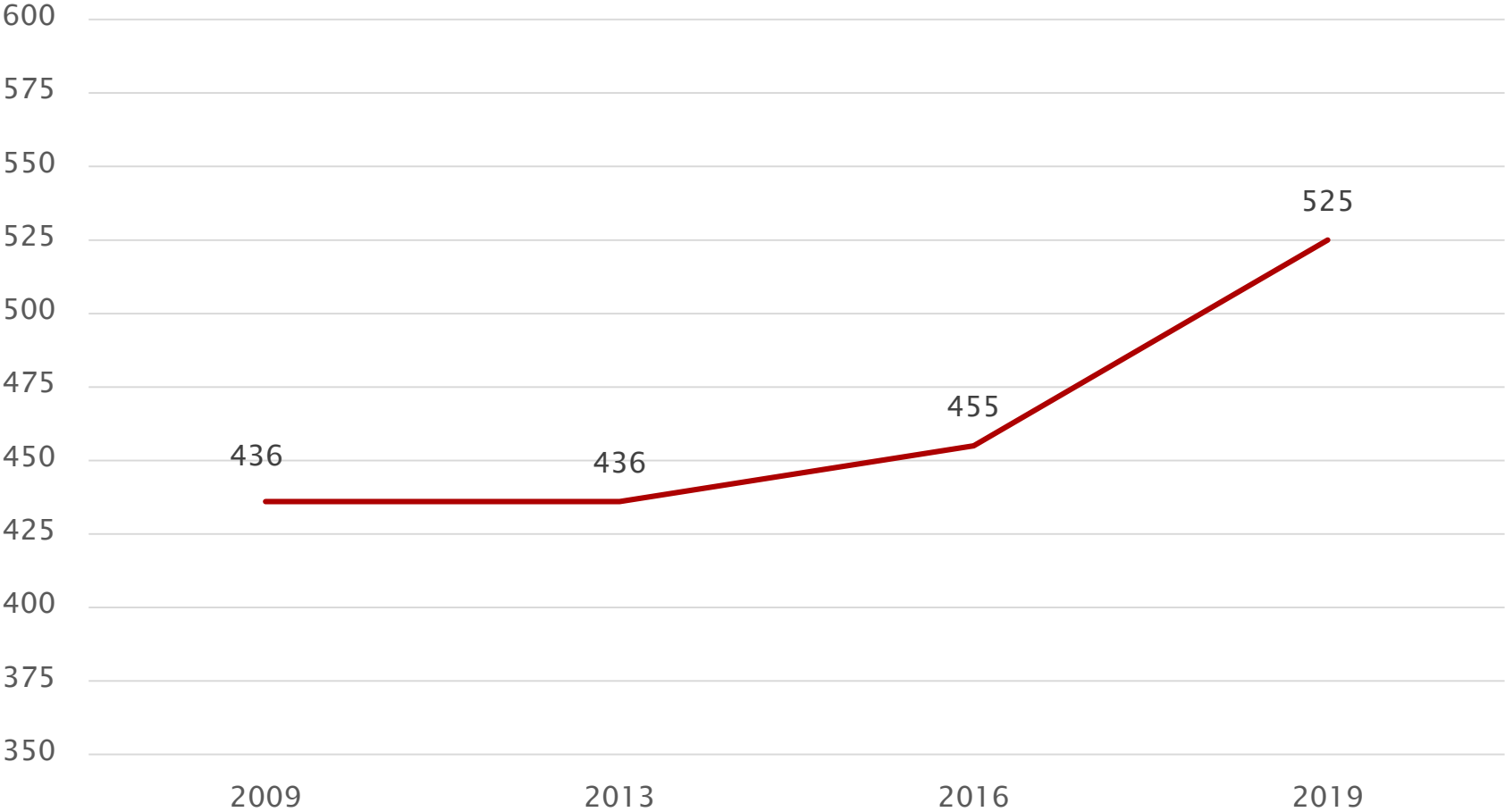
Efficiencies within Nalcor

- ▶ IBEW Local 1615 agrees with an efficient and effective organization providing least cost, reliable service for the rate payer of the province.
 - ▶ Where we diverge is how we achieve that.
- 

Staffing – FTE

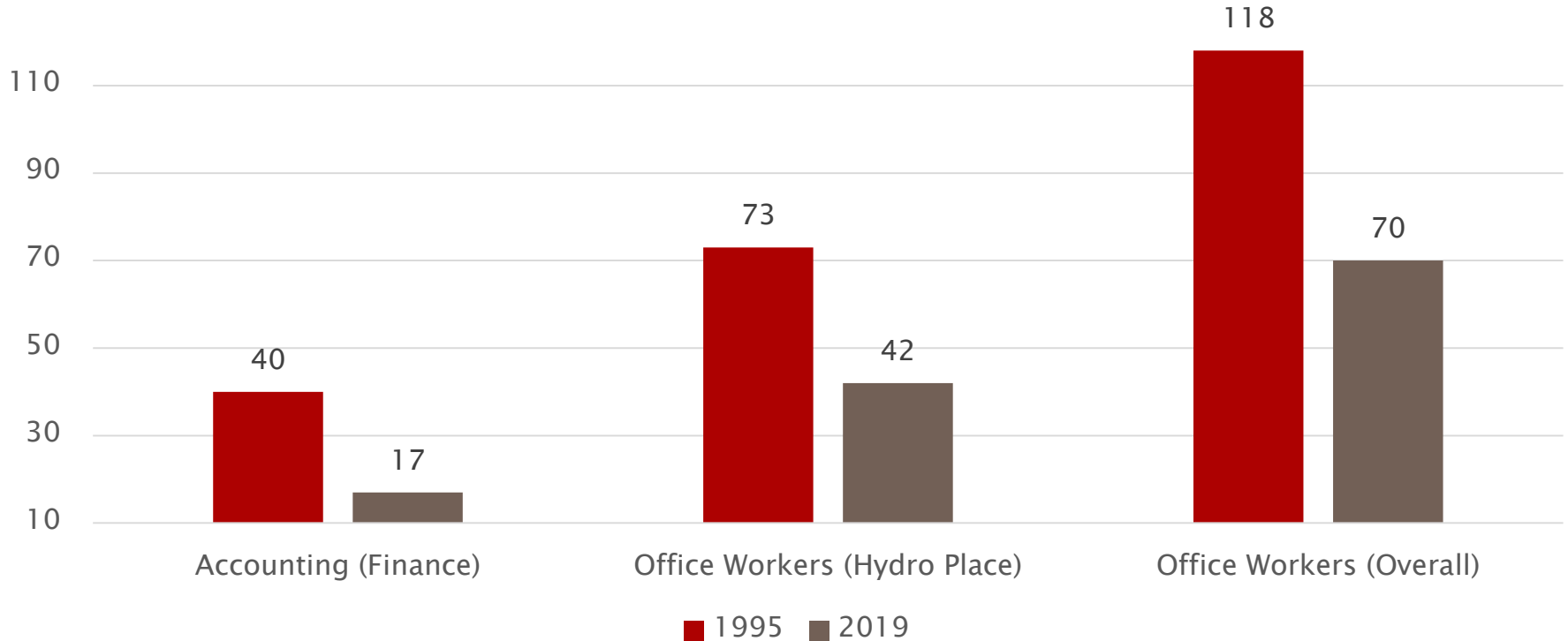


Bargaining Unit Positions



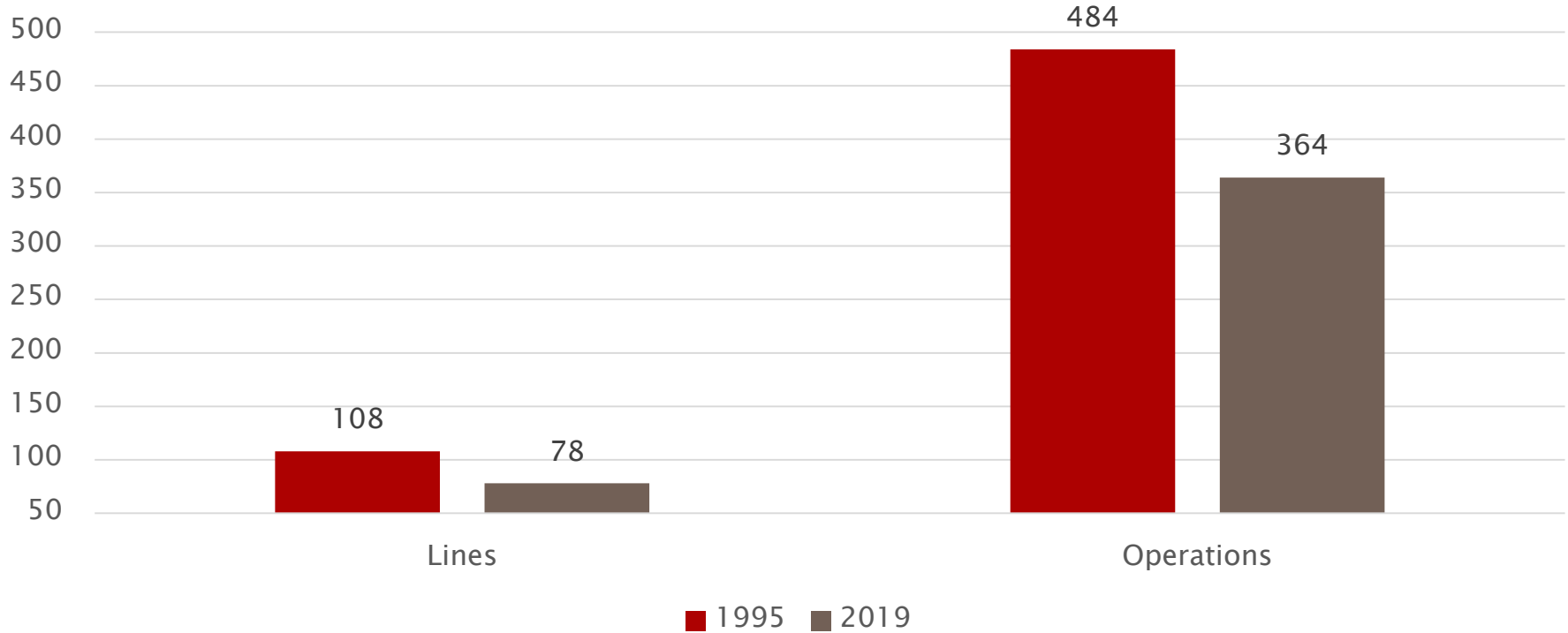
Bargaining Unit Positions

Office Workers

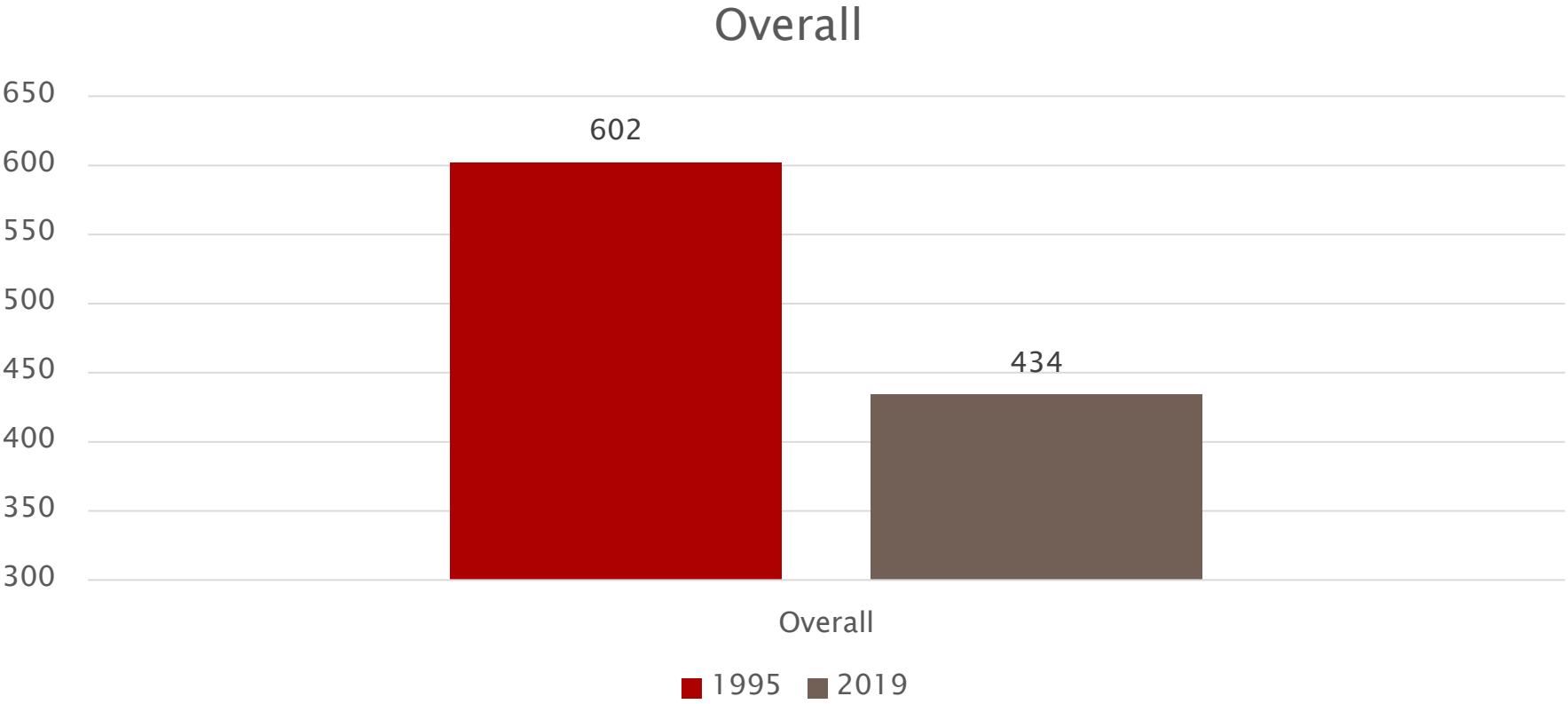


Bargaining Unit Positions

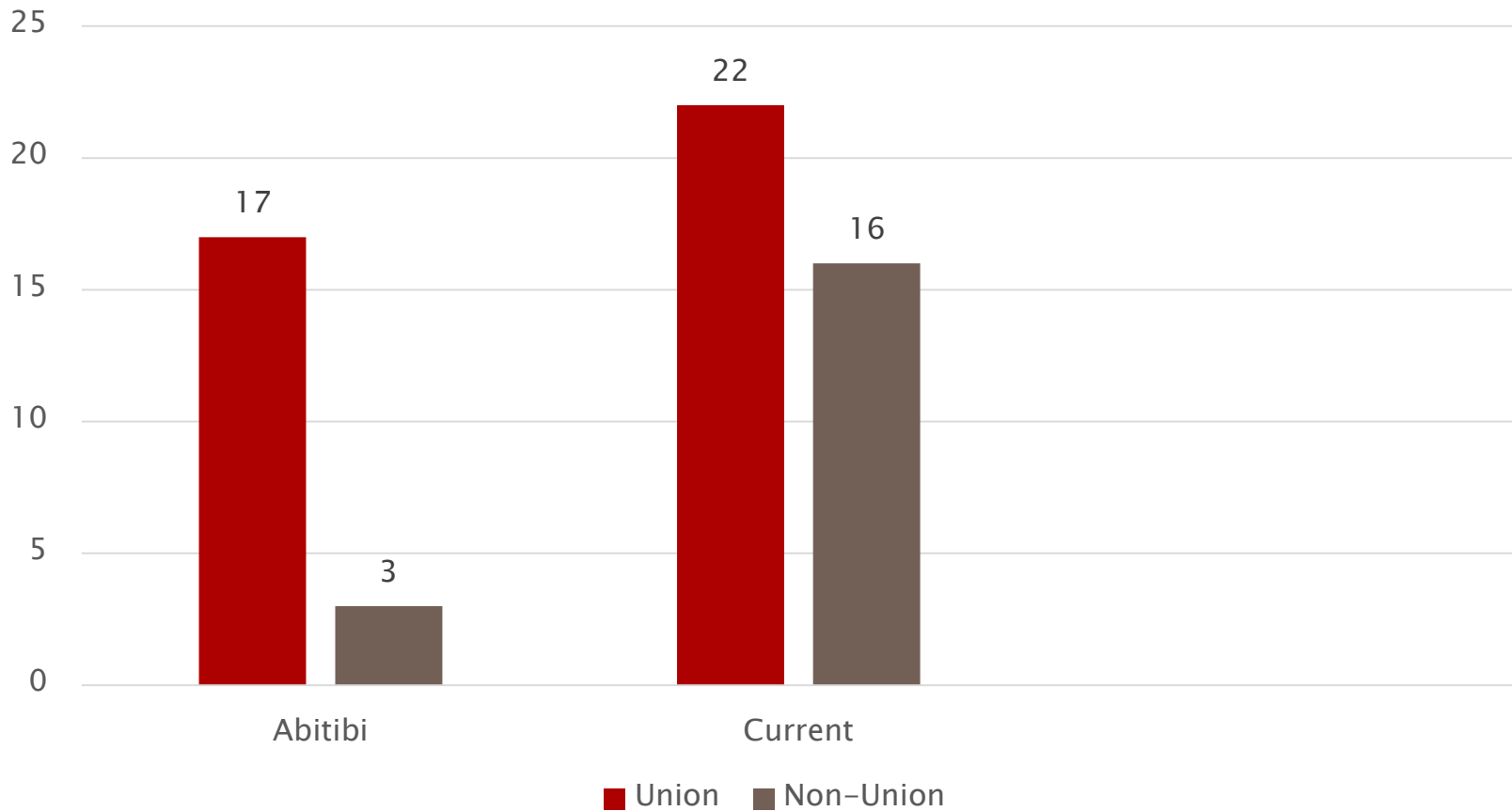
Operations



Bargaining Unit Positions



Exploits Generation



Questions / Comments